

List of pages in this Trip Kit

Trip Kit Index

Airport Information For UKKT

Terminal Charts For UKKT

Revision Letter For Cycle 05-2025

Change Notices

Notebook

General Information

Location: KYIV UKR
ICAO: UKKT
Lat/Long: N50° 28.73', E030° 23.05'
Elevation: 581 ft

Airport Use: Public
Daylight Savings: Observed
UTC Conversion: -2:00 = UTC
Magnetic Variation: 7.0° E

Repair Types: Minor Airframe, Minor Engine, Major Airframe, Major Engine
Customs: No
Airport Type: IFR
Landing Fee: Yes
Control Tower: Yes
Jet Start Unit: No
LLWS Alert: No
Beacon: No

Sunrise: 0201 Z
Sunset: 1749 Z

Runway Information

Runway: 14
Length x Width: 5925 ft x 115 ft
Surface Type: concrete
TDZ-Elev: 570 ft

Runway: 32
Length x Width: 5925 ft x 115 ft
Surface Type: concrete
TDZ-Elev: 581 ft

Communication Information

Kyiv/Antonov-1 Tower: 127.125
Kyiv/Antonov-1 Tower: 128.200 Secondary
Kyiv Radar ACC: 127.725 RCO
Kyiv Radar ACC: 125.300 RCO
Kyiv Radar ACC: 124.675 RCO

UKKT
ANTONOV-1 NATL

JEPPESEN

KYIV, UKRAINE

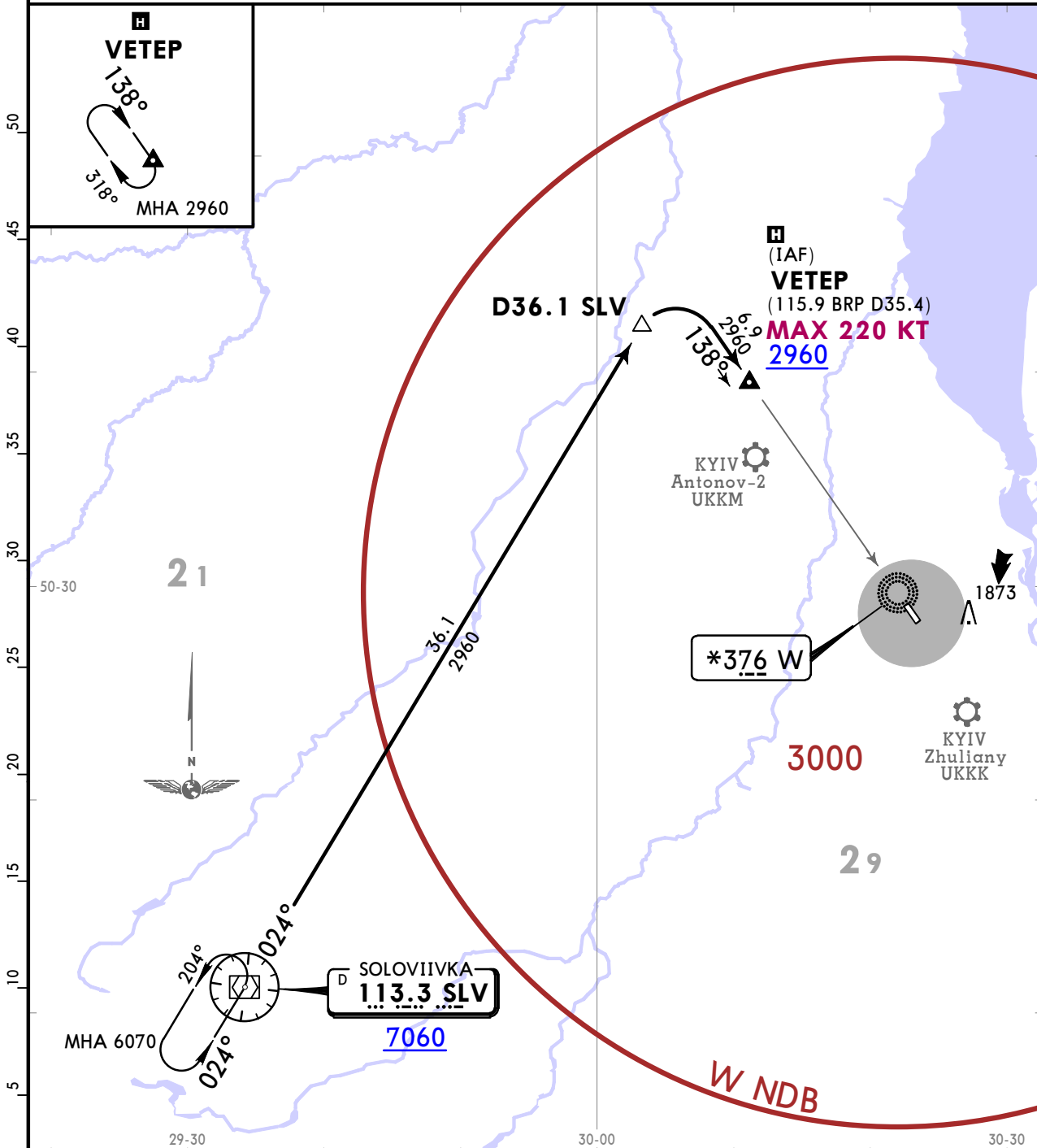
21 JAN 22 **(40-2A)** Eff 27 Jan

STAR

Apt Elev **581**
Alt Set: hPa Trans level: By ATC
Expect descent clearance by ATC.

SOLOVIIVKA 7X ARRIVAL
(SLV 7X)
(RWY 14)

SPEED: MAX 250 KT AT OR BELOW 10010
WITHIN 30 NM FROM ARP



FT/METER CONVERSION

FT	METER
10010'	3050m
7060'	2150m
6070'	1850m
3940'	1200m
2960'	900m

LOST COMMS ▼ LOST COMMS ▼ LOST COMMS ▼ LOST COMMS ▼ LOST COMMS ▼ LOST COMMS ▼ LOST COMMS

In case of radio communication failure crew should:
 -switch to transponder code A 7600 IMMEDIATELY;
 -proceed to IAF VETEP at altitude 3940 or at the last assigned altitude if it is higher than 3940, hold over VETEP for 5 min,
 then execute instrument approach procedure for RWY 14.

LOST COMMS ▲ LOST COMMS ▲ LOST COMMS ▲ LOST COMMS ▲ LOST COMMS ▲ LOST COMMS ▲ COMMS

ROUTING

On SLV R024 to D36.1 SLV, turn RIGHT, intercept 138° bearing towards W NDB to VETEP, then according to approach chart.

UKKT

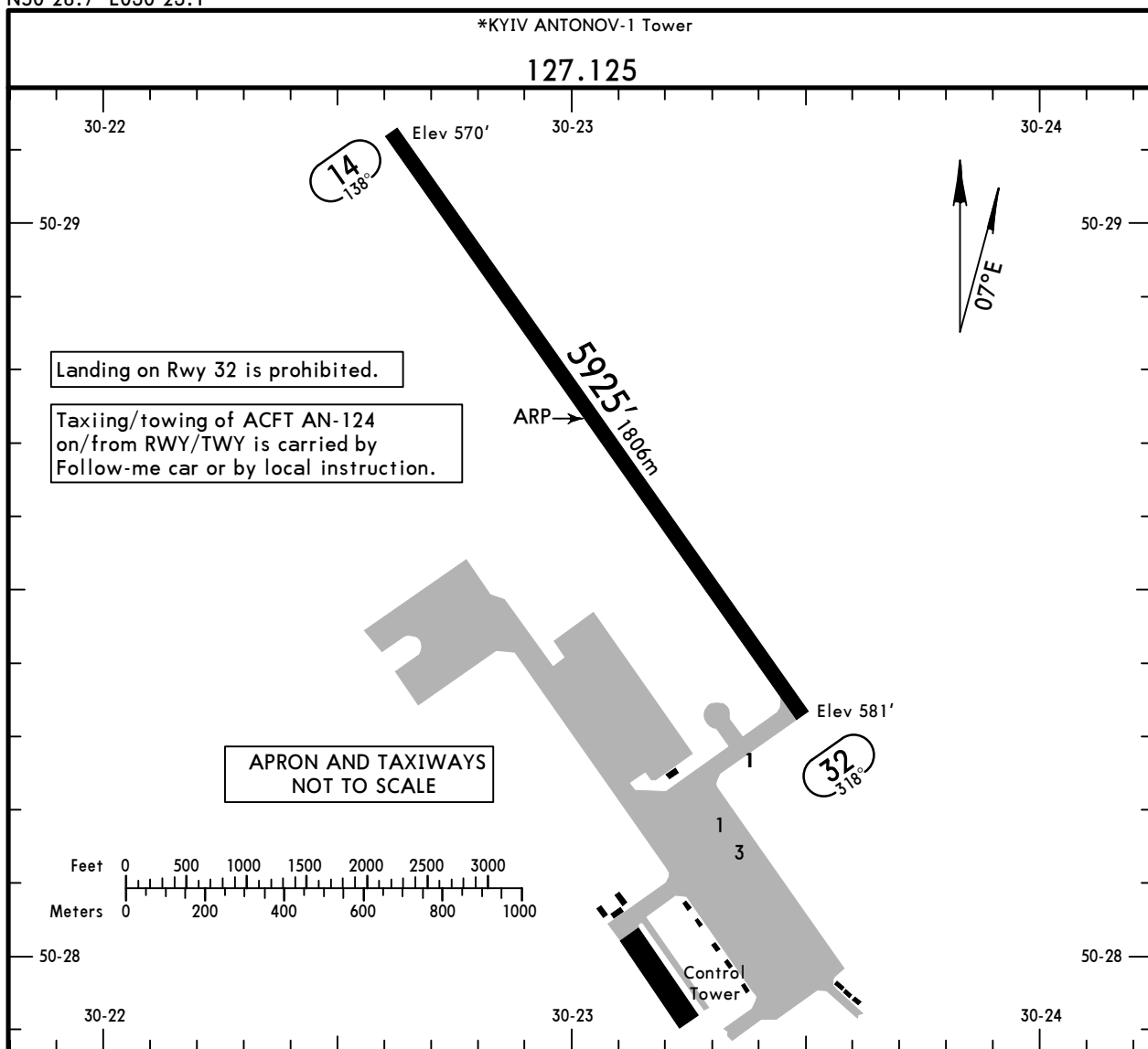
Apt Elev **581'**
N50 28.7 E030 23.1

JEPPESEN

22 JAN 21 **(40-9)** Eff 28 Jan

KYIV, UKRAINE

ANTONOV-1 NATL



ADDITIONAL RUNWAY INFORMATION

RWY	USABLE LENGTHS		TAKE-OFF	WIDTH
	Threshold	Glide Slope		
14			①	115'
32			②	35m

① take-off from Rwy 14 is prohibited.

② First 98'/30m unusable for take-off.

TAKE-OFF RUN AVAILABLE

RWY 32:

From rwy head 5827' (1776m)

JAR-OPS

TAKE-OFF

Rwy 32

NIL
(DAY only)

A
B
C
D

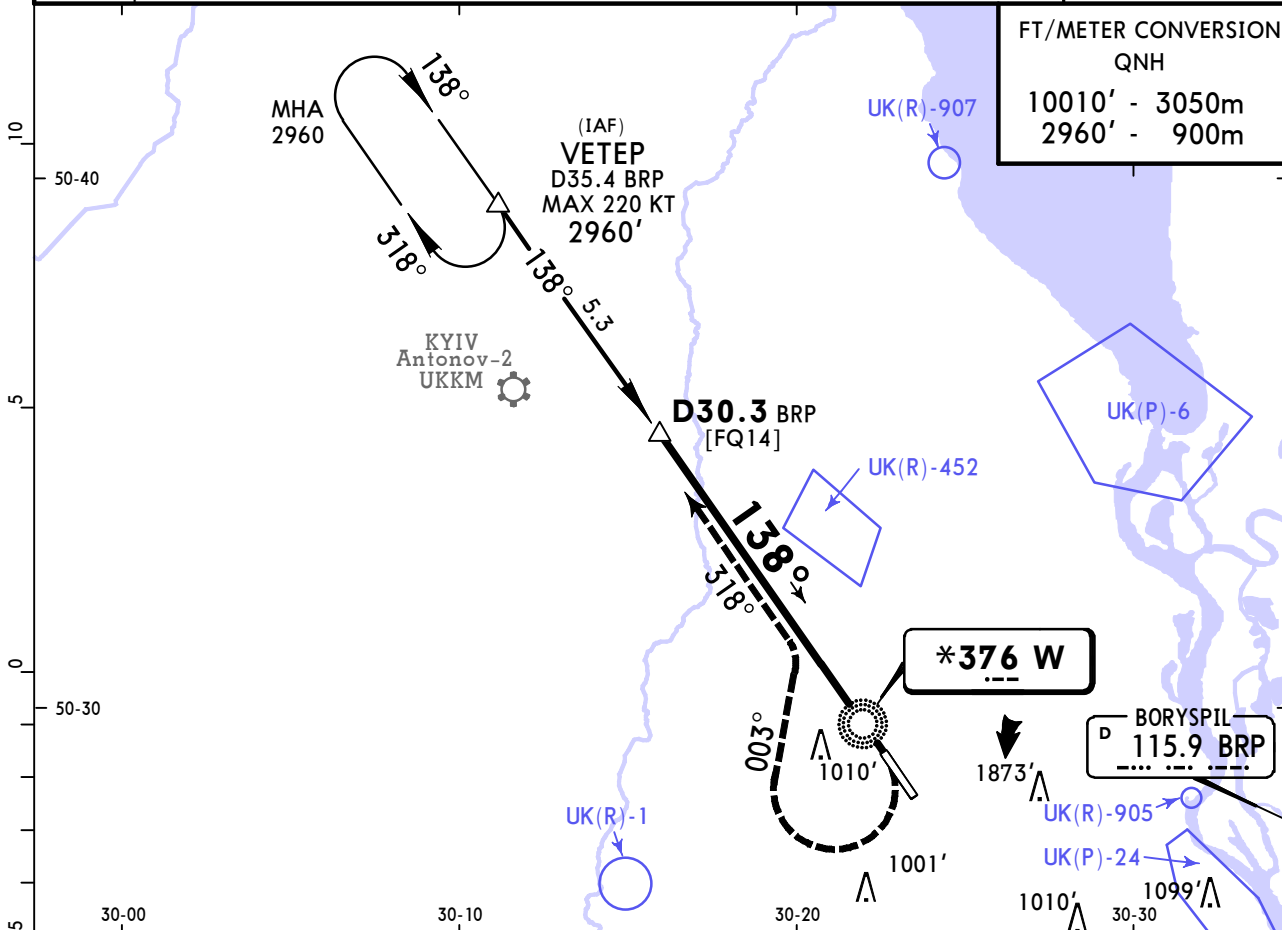
500m

UKKT
ANTONOV-1 NATL

JEPPESEN
25 DEC 20 **(46-1)** **Eff 31 Dec**

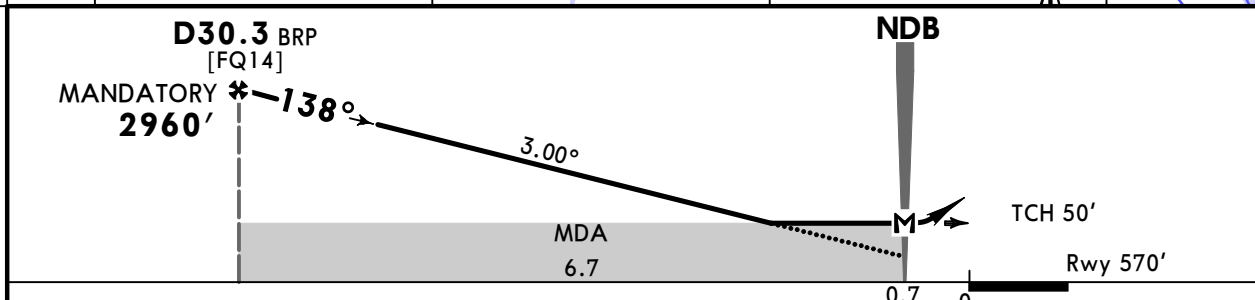
KYIV, UKRAINE
NDB Rwy 14

KYIV Radar (APP) 127.725			125.3		*KYIV ANTONOV-1 Tower 127.125	
NDB W *376	Final Apch Crs 138°	D30.3 BRP MANDATORY 2960' (2390')	MDA(H) 1190' (620')	Apt Elev 581'	Rwy 570'	3000 MSA W NDB
MISSED APCH: Turn RIGHT on track 003°, then turn LEFT to intercept 318° from NDB climbing to 2960' to VETEP. Then according to chart.						
Alt Set: hPa (MM on req) Rwy Elev: 21 hPa Trans level: By ATC Trans alt: 10010' DME required.						



FT/METER CONVERSION
QNH

10010'	3050m
2960'	900m



Gnd speed-Kts	70	90	100	120	140	160	MAP at NDB	RT on hdg 003°	
Descent Angle	3.00°	372	478	531	637	743			849

JAR-OPS				STRAIGHT-IN LANDING RWY 14				CIRCLE-TO-LAND							
MDA(H) 1190' (620')															
A	RVR 1500m							A	NOT AUTHORIZED						
B								B							
C	RVR 2000m							C							
D								D							

PANS OPS

Chart changes since cycle 04-2025

ADD = added chart, REV = revised chart, DEL = deleted chart.

ACT	PROCEDURE IDENT	INDEX	REV DATE	EFF DATE
	KYIV, (ANTONOV-1 NATL - UKKT)			

TERMINAL CHART CHANGE NOTICES

No Chart Change Notices for Airport UKKT