

List of pages in this Trip Kit

Trip Kit Index

Airport Information For UKLN

Terminal Charts For UKLN

Revision Letter For Cycle 05-2025

Change Notices

Notebook

General Information

Location: CHERNIVTSI UKR
ICAO/IATA: UKLN / CWC
Lat/Long: N48° 15.57', E025° 58.80'
Elevation: 827 ft

Airport Use: Public
Daylight Savings: Observed
UTC Conversion: -2:00 = UTC
Magnetic Variation: 5.0° E

Fuel Types: Jet A-1
Customs: Yes
Airport Type: IFR
Landing Fee: Yes
Control Tower: No
Jet Start Unit: No
LLWS Alert: No
Beacon: No

Sunrise: 0228 Z
Sunset: 1758 Z

Runway Information

Runway: 15
Length x Width: 7270 ft x 138 ft
Surface Type: asphalt
TDZ-Elev: 801 ft
Lighting: Edge, ALS

Runway: 33
Length x Width: 7270 ft x 138 ft
Surface Type: asphalt
TDZ-Elev: 826 ft
Lighting: Edge, ALS

Communication Information

Lviv Information: 130.700 Flight Info Service RCO
Chernivtsi Information: 121.300 AFIS

UKLN/CWC
CHERNIVTSI INTL

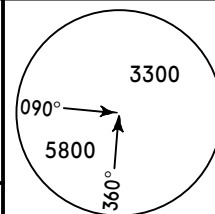
JEPPESEN
 16 APR 21 **10-2** **Eff 22 Apr**

CHERNIVTSI, UKRAINE

RNAV STAR

Apt Elev
827'

Alt Set: hPa
 Trans level: By ATC Trans alt: 10010'
 1. GNSS required.
 2. RNP 1 approval required otherwise advise ATC.



MSA ARP

**BUKOV 3J [BUK03J], LOPNU 3J [LOPN3J]
 TUMBI 3J [TUMB3J]
 RWY 15 RNP (GNSS) ARRIVALS**



(IAF)
LNNØ5
MAX 220 KT
 Between
 6070' & 3940'

MHA 3290
 10.6
 3290
 238°

LNEØ1
 (Fly-over for holding only)
 At or above
 6070'

LNSØ1
 (Fly-over for holding only)
 At or above
 8040'

MHA 3290

BUKOV 3J
 18.1
 3290
 020°

BUKOV
 At or above
 9030'

LOPNU 3J
 37.7
 3290

LOPNU
 At or above
 10010'

TUMBI 3J
 15.6
 3290
 270°

TUMBI
 At or above
 10010'

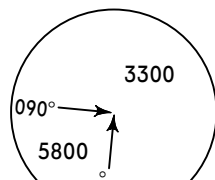
FT/METER CONVERSION	
QNH	
10010'	- 3050m
9030'	- 2750m
8040'	- 2450m
6070'	- 1850m
3940'	- 1200m
3290'	- 1000m

STAR	ROUTING
BUKOV 3J	BUKOV (9030'+) - LNSØ1 (8040'+) - LNNØ5 (K220-; 6070'-; 3940'+).
LOPNU 3J	LOPNU (10010'+) - LNEØ1 (6070'+) - LNNØ5 (K220-; 6070'-; 3940'+).
TUMBI 3J	TUMBI (10010'+) - LNEØ1 (6070'+) - LNNØ5 (K220-; 6070'-; 3940'+).

UKLN/CWC
CHERNIVTSI INTL

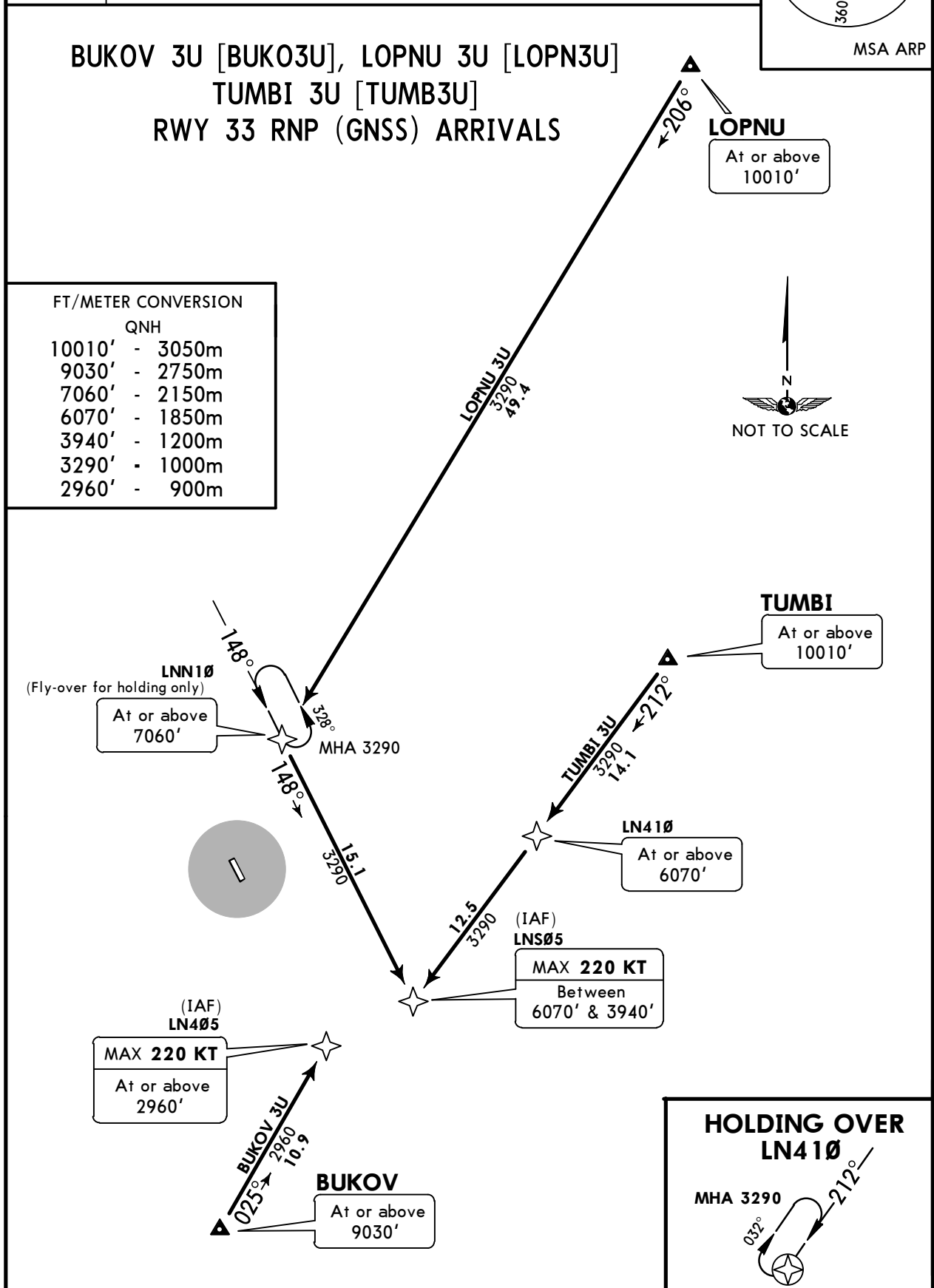
JEPPESEN
16 APR 21 **(10-2A)** **Eff 22 Apr**

CHERNIVTSI, UKRAINE
RNAV STAR

Apt Elev 827'	Alt Set: hPa Trans level: By ATC Trans alt: 10010' 1. GNSS required. 2. RNP 1 approval required otherwise advise ATC.	 MSA ARP
-------------------------	--	--

**BUKOV 3U [BUK03U], LOPNU 3U [LOPN3U]
TUMBI 3U [TUMB3U]
RWY 33 RNP (GNSS) ARRIVALS**

FT/METER CONVERSION	
QNH	
10010'	- 3050m
9030'	- 2750m
7060'	- 2150m
6070'	- 1850m
3940'	- 1200m
3290'	- 1000m
2960'	- 900m



STAR	ROUTING
BUKOV 3U	BUKOV (9030'+) - LN405 (K220-; 2960'+).
LOPNU 3U	LOPNU (10010'+) - LNN10 (7060'+) - LNS05 (K220-; 6070'-; 3940'+).
TUMBI 3U	TUMBI (10010'+) - LN410 (6070'+) - LNS05 (K220-; 6070'-; 3940'+).

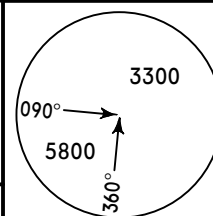
UKLN/CWC
CHERNIVTSI INTL

JEPPESEN
 16 APR 21 **10-2B** **Eff 22 Apr**

CHERNIVTSI, UKRAINE
RNAV STAR

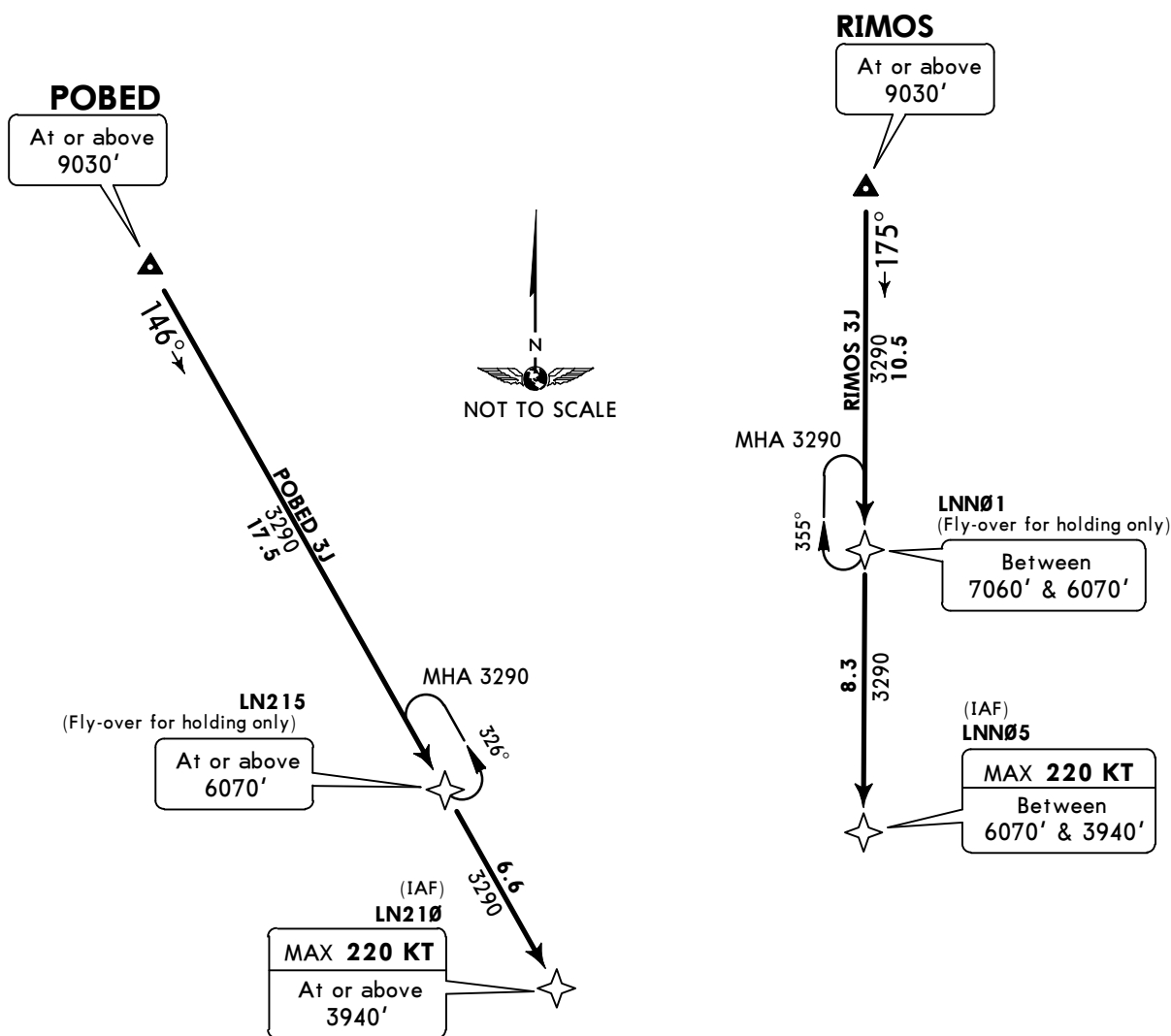
Apt Elev
827'

Alt Set: hPa
 Trans level: By ATC Trans alt: 10010'
 1. GNSS required.
 2. RNP 1 approval required otherwise advise ATC.



MSA ARP

POBED 3J [POBE3J], RIMOS 3J [RIMO3J]
RWY 15 RNP (GNSS) ARRIVALS



FT/METER CONVERSION	
QNH	
10010'	- 3050m
9030'	- 2750m
7060'	- 2150m
6070'	- 1850m
3940'	- 1200m
3290'	- 1000m

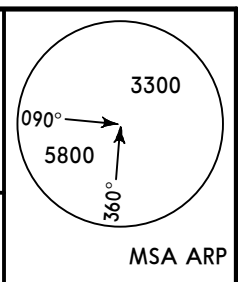
STAR	ROUTING
POBED 3J	POBED (9030'+) - LN215 (6070'+) - LN210 (K220-; 3940'+).
RIMOS 3J	RIMOS (9030'+) - LNN01 (7060'-; 6070'+) - LNN05 (K220-; 6070'-; 3940'+).

UKLN/CWC
CHERNIVTSI INTL

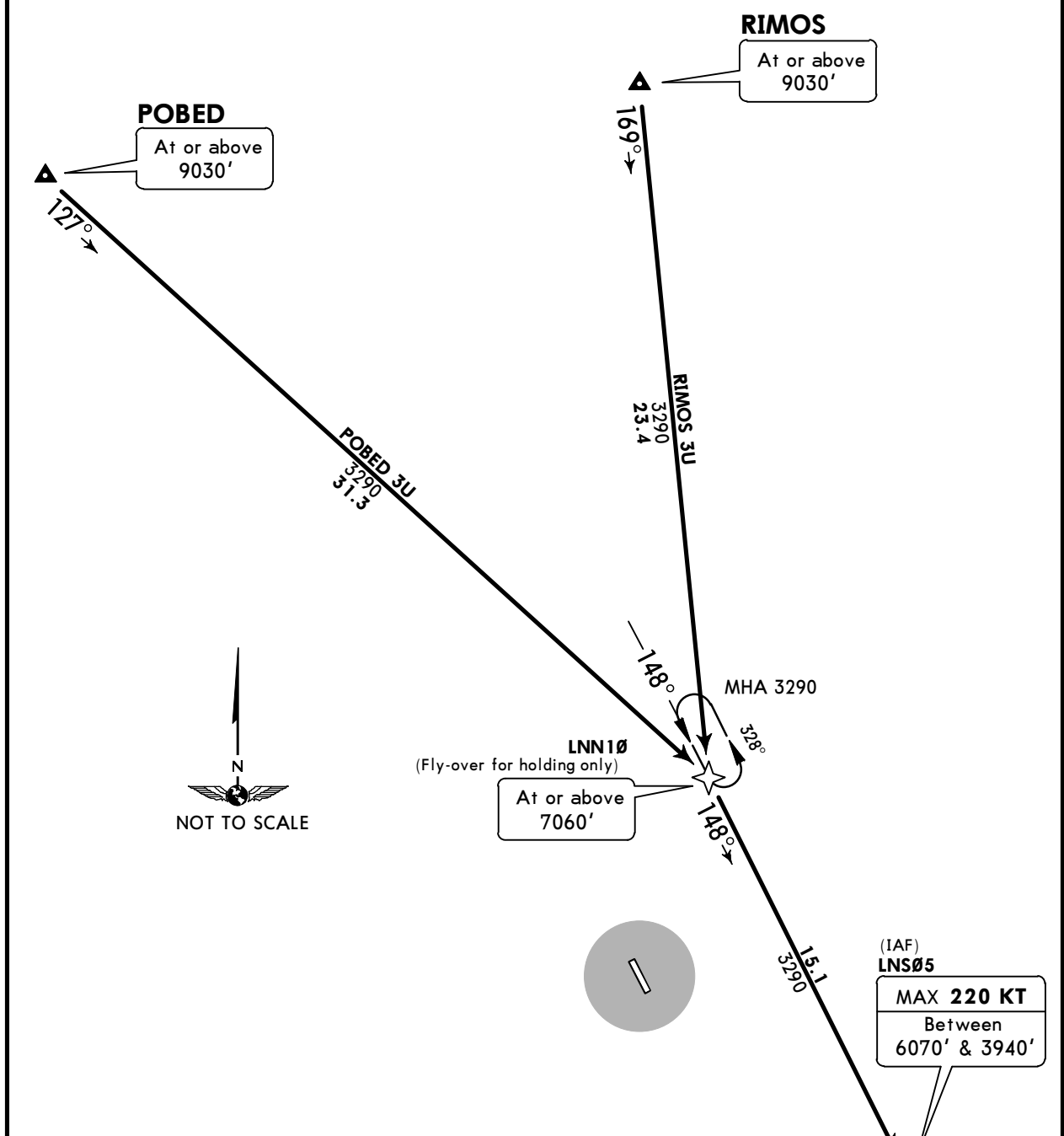
JEPPESEN
 16 APR 21 **(10-2C)** **Eff 22 Apr**

CHERNIVTSI, UKRAINE
RNAV STAR

Apt Elev **827'**
 Alt Set: hPa
 Trans level: By ATC Trans alt: 10010'
 1. GNSS required.
 2. RNP 1 approval required otherwise advise ATC.



POBED 3U [POBE3U], RIMOS 3U [RIMO3U]
RWY 33 RNP (GNSS) ARRIVALS



FT/METER CONVERSION	
QNH	
10010'	- 3050m
9030'	- 2750m
7060'	- 2150m
6070'	- 1850m
3940'	- 1200m
3290'	- 1000m

STAR	ROUTING
POBED 3U	POBED (9030'+) - LNN10 (7060'+) - LNS05 (K220-; 6070'-; 3940'+).
RIMOS 3U	RIMOS (9030'+) - LNN10 (7060'+) - LNS05 (K220-; 6070'-; 3940'+).

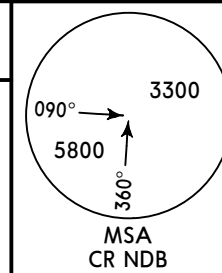
UKLN/CWC
CHERNIVTSI INTL

JEPPESEN
 2 NOV 18 **(10-2D)** **Eff 8 Nov**

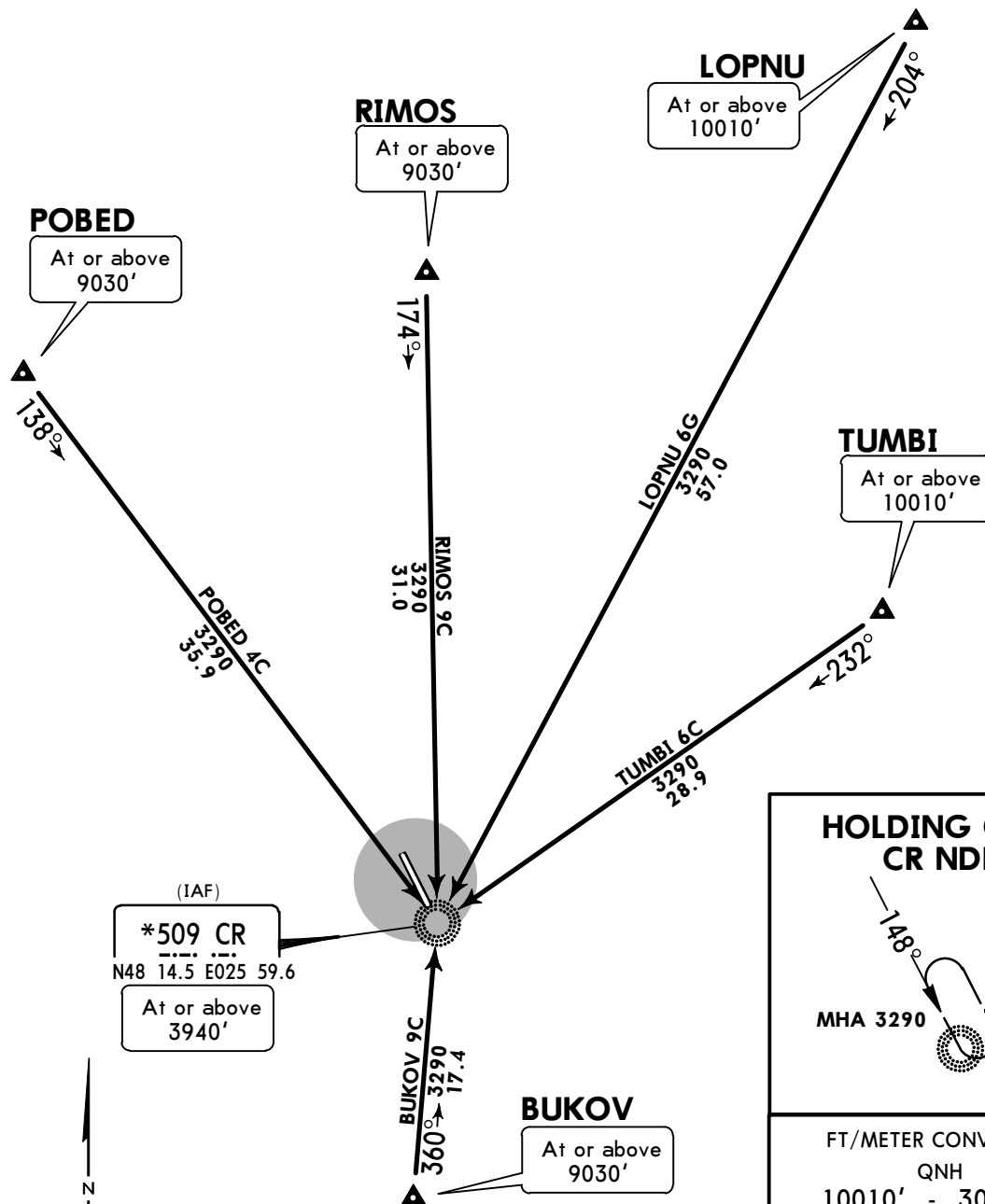
CHERNIVTSI, UKRAINE

STAR

Apt Elev **827'**
 Alt Set: hPa
 Trans level: By ATC Trans alt: 10010'



- BUKOV 9C [BUK09C]
- LOPNU 6G [LOPN6G]
- POBED 4C [POBE4C]
- RIMOS 9C [RIM09C]
- TUMBI 6C [TUMB6C]
- RWY 15 ARRIVALS



HOLDING OVER CR NDB

MHA 3290

FT/METER CONVERSION

FT	METER
10010'	3050m
9030'	2750m
3940'	1200m
3290'	1000m



STAR	ROUTING
BUKOV 9C	On 360° track to CR NDB, then according to approach chart.
LOPNU 6G	On 204° track to CR NDB, then according to approach chart.
POBED 4C	On 138° track to CR NDB, then according to approach chart.
RIMOS 9C	On 174° track to CR NDB, then according to approach chart.
TUMBI 6C	On 232° track to CR NDB, then according to approach chart.

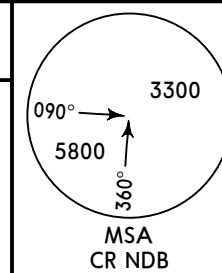
UKLN/CWC
CHERNIVTSI INTL

JEPPESEN
2 NOV 18 **10-2E** **Eff 8 Nov**

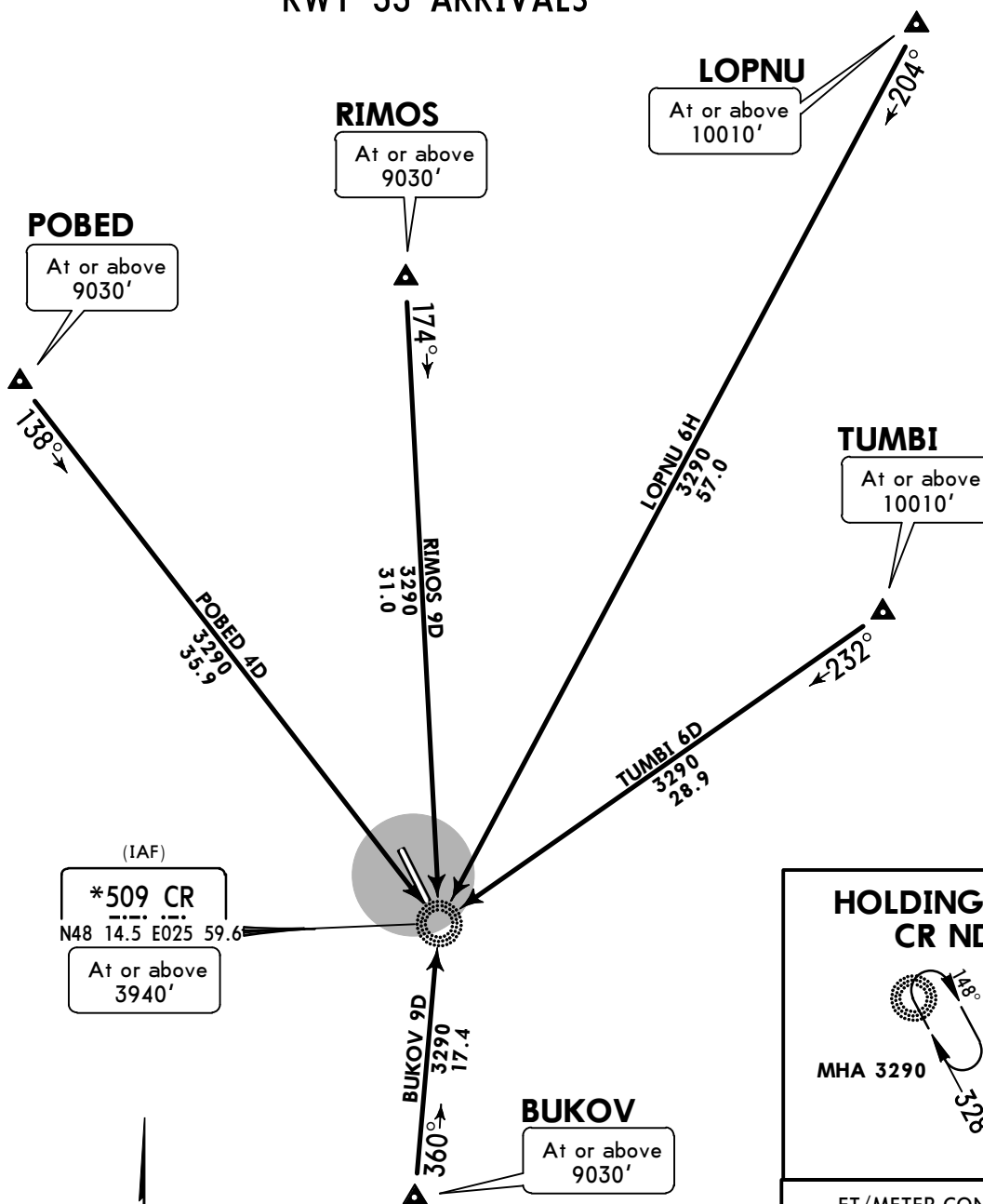
CHERNIVTSI, UKRAINE

STAR

Apt Elev **827'**
Alt Set: hPa
Trans level: By ATC Trans alt: 10010'



BUKOV 9D [BUK09D]
LOPNU 6H [LOPN6H]
POBED 4D [POBE4D]
RIMOS 9D [RIMO9D]
TUMBI 6D [TUMB6D]
RWY 33 ARRIVALS



(IAF)
***509 CR**
N48 14.5 E025 59.6
At or above 3940'

HOLDING OVER CR NDB

MHA 3290

FT/METER CONVERSION	
QNH	
10010'	- 3050m
9030'	- 2750m
3940'	- 1200m
3290'	- 1000m



STAR	ROUTING
BUKOV 9D	On 360° track to CR NDB, then according to approach chart.
LOPNU 6H	On 204° track to CR NDB, then according to approach chart.
POBED 4D	On 138° track to CR NDB, then according to approach chart.
RIMOS 9D	On 174° track to CR NDB, then according to approach chart.
TUMBI 6D	On 232° track to CR NDB, then according to approach chart.

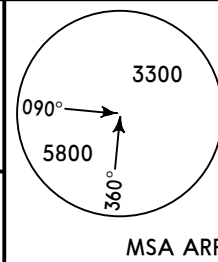
UKLN/CWC
CHERNIVTSI INTL

JEPPESEN 16 APR 21 **10-3** **Eff 22 Apr**

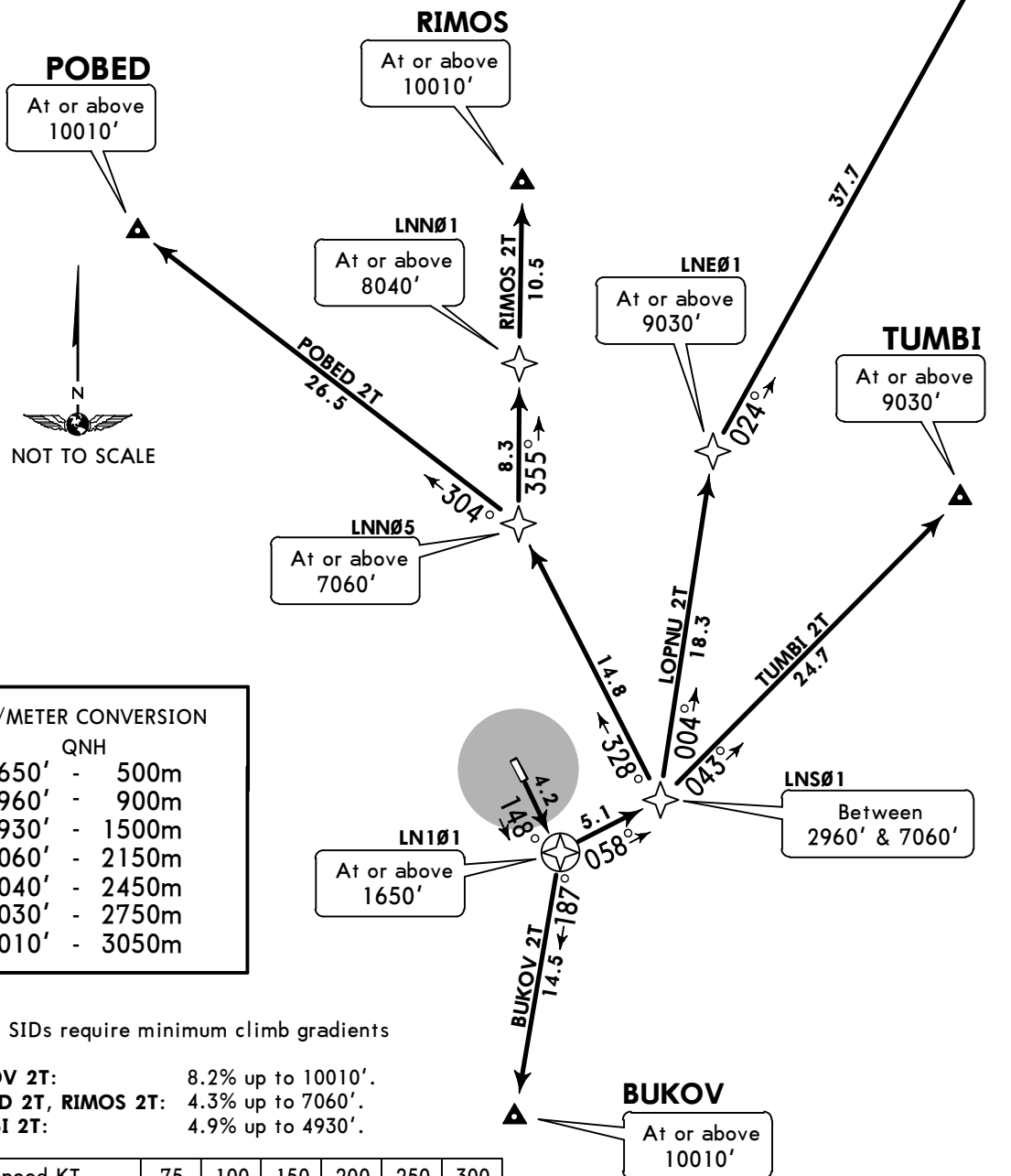
CHERNIVTSI, UKRAINE
RNAV SID

Apt Elev
827'

- Trans level: By ATC Trans alt: 10010'
 1. GNSS required.
 2. RNP 1 approval required otherwise advise ATC.
 3. If unable to comply advise ATC.
 4. Expect close-in obstacles.



BUKOV 2T [BUKO2T], LOPNU 2T [LOPN2T]
POBED 2T [POBE2T], RIMOS 2T [RIMO2T]
TUMBI 2T [TUMB2T]
RWY 15 RNP (GNSS) DEPARTURES



FT/METER CONVERSION

FT	METER
1650'	500m
2960'	900m
4930'	1500m
7060'	2150m
8040'	2450m
9030'	2750m
10010'	3050m

These SIDs require minimum climb gradients of

- BUKOV 2T:** 8.2% up to 10010'.
POBED 2T, RIMOS 2T: 4.3% up to 7060'.
TUMBI 2T: 4.9% up to 4930'.

Gnd speed-KT	75	100	150	200	250	300
4.3% V/V (fpm)	327	435	653	871	1089	1306
4.9% V/V (fpm)	372	496	744	992	1241	1489
8.2% V/V (fpm)	623	830	1246	1661	2076	2491

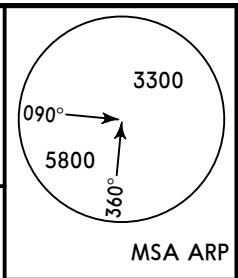
SID	ROUTING
BUKOV 2T	LN101 (1650'+) - BUKOV (10010'+).
LOPNU 2T	LN101 (1650'+) - LNS01 (2960'+; 7060'-) - LNE01 (9030'+) - LOPNU (9030'+).
POBED 2T	LN101 (1650'+) - LNS01 (2960'+; 7060'-) - LNN05 (7060'+) - POBED (10010'+).
RIMOS 2T	LN101 (1650'+) - LNS01 (2960'+; 7060'-) - LNN05 (7060'+) - LNN01 (8040'+) - RIMOS (10010'+).
TUMBI 2T	LN101 (1650'+) - LNS01 (2960'+; 7060'-) - TUMBI (9030'+).

UKLN/CWC
CHERNIVTSI INTL

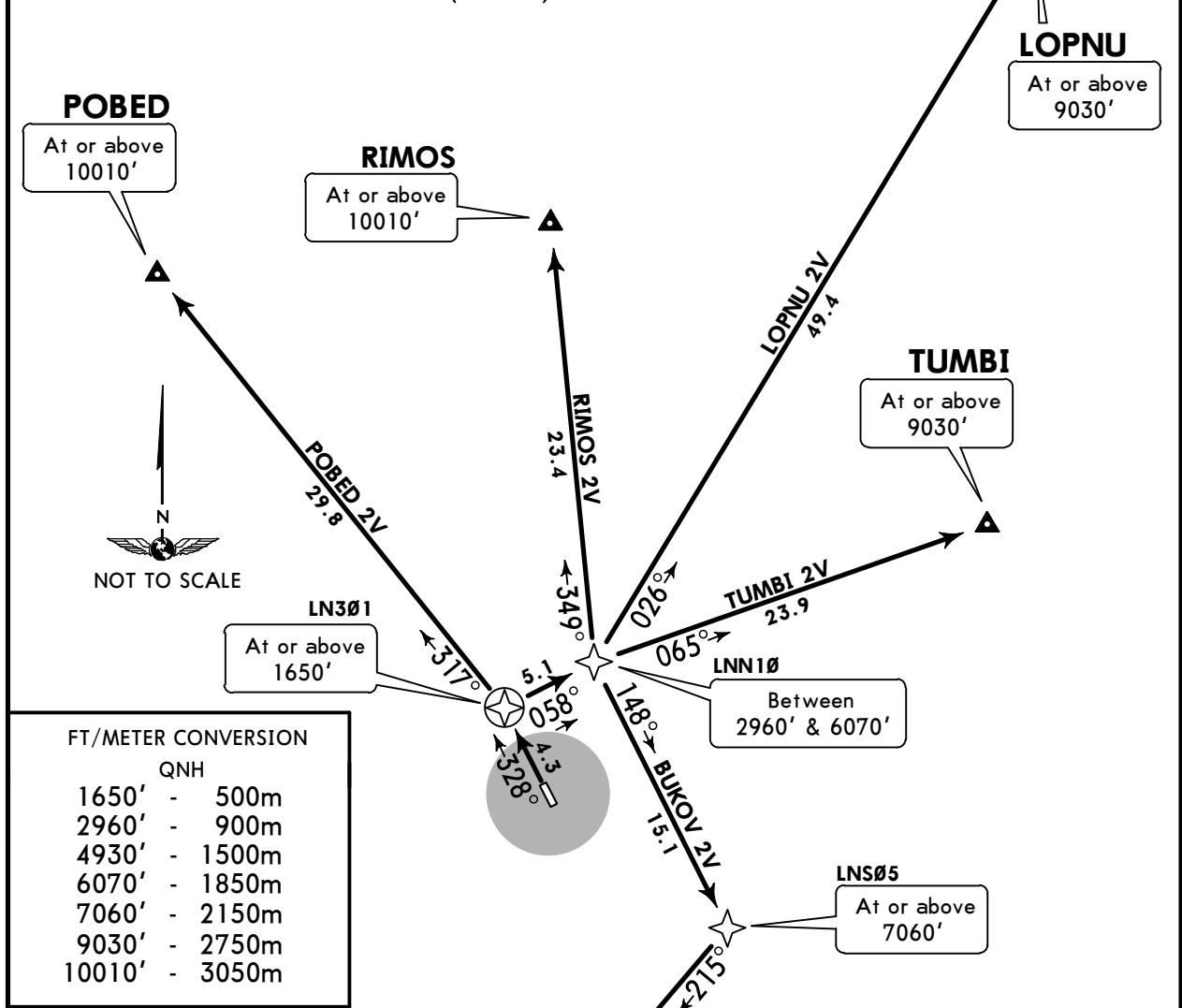
JEPPESEN
16 APR 21 **10-3A** Eff 22 Apr

CHERNIVTSI, UKRAINE
RNAV SID

Apt Elev **827'**
Trans level: By ATC Trans alt: 10010'
1. GNSS required.
2. RNP 1 approval required otherwise advise ATC.
3. If unable to comply advise ATC.
4. Expect close-in obstacles.



**BUKOV 2V [BUK02V], LOPNU 2V [LOPN2V]
POBED 2V [POBE2V], RIMOS 2V [RIMO2V]
TUMBI 2V [TUMB2V]
RWY 33 RNP (GNSS) DEPARTURES**



FT/METER CONVERSION

QNH

1650'	-	500m
2960'	-	900m
4930'	-	1500m
6070'	-	1850m
7060'	-	2150m
9030'	-	2750m
10010'	-	3050m

These SIDs require minimum climb gradients of

BUKOV 2V: 4.2% up to 7060'.
LOPNU 2V, TUMBI 2V: 4.9% up to 4930'.
POBED 2V: 5.7% up to 4930'.
RIMOS 2V: 3.9% up to 4930'.

Gnd speed-KT	75	100	150	200	250	300
3.9% V/V (fpm)	296	395	592	790	987	1185
4.2% V/V (fpm)	319	425	638	851	1063	1276
4.9% V/V (fpm)	372	496	744	992	1241	1489
5.7% V/V (fpm)	433	577	866	1154	1443	1732

SID	ROUTING
BUKOV 2V	LN301 (1650'+) - LNN10 (2960'+; 6070'-) - LNS05 (7060'+) - BUKOV (10010'+).
LOPNU 2V	LN301 (1650'+) - LNN10 (2960'+; 6070'-) - LOPNU (9030'+).
POBED 2V	LN301 (1650'+) - POBED (10010'+).
RIMOS 2V	LN301 (1650'+) - LNN10 (2960'+; 6070'-) - RIMOS (10010'+).
TUMBI 2V	LN301 (1650'+) - LNN10 (2960'+; 6070'-) - TUMBI (9030'+).

UKLN/CWC
CHERNIVTSI INTL

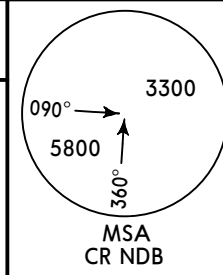
JEPPESEN
2 NOV 18 **10-3B** **Eff 8 Nov**

CHERNIVTSI, UKRAINE

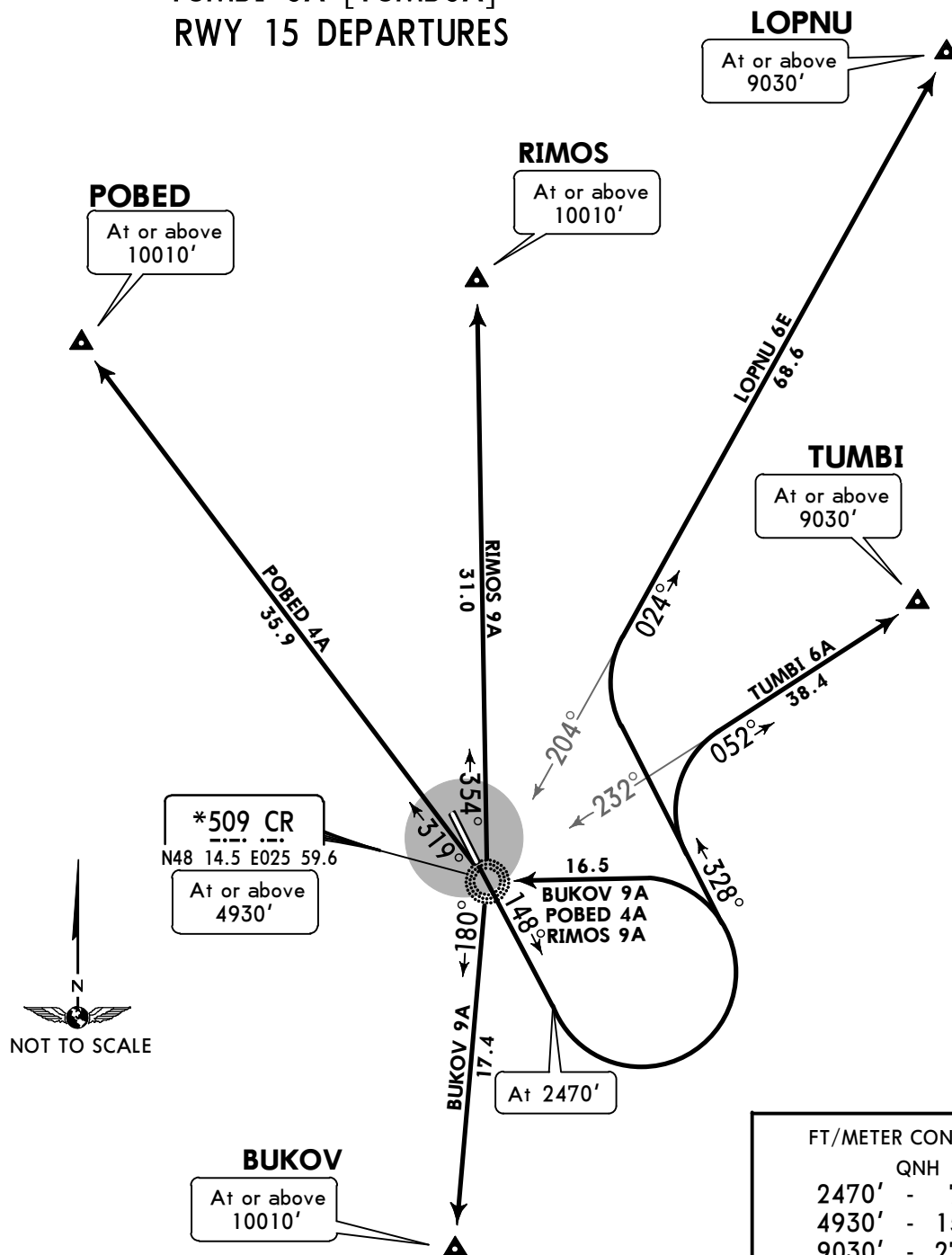
SID

Apt Elev
827'

Trans level: By ATC Trans alt: 10010'
Expect close-in obstacles.



BUKOV 9A [BUK09A]
LOPNU 6E [LOPN6E]
POBED 4A [POBE4A]
RIMOS 9A [RIM09A]
TUMBI 6A [TUMB6A]
RWY 15 DEPARTURES



FT/METER CONVERSION	
QNH	
2470'	- 750m
4930'	- 1500m
9030'	- 2750m
10010'	- 3050m

SID	ROUTING
BUKOV 9A	Climb on 148° track to 2470', turn LEFT to CR NDB, turn LEFT on 180° track to BUKOV.
LOPNU 6E	Climb on 148° track to 2470', turn LEFT, 328° track, turn RIGHT, intercept 204° bearing from CR NDB to LOPNU.
POBED 4A	Climb on 148° track to 2470', turn LEFT to CR NDB, turn RIGHT on 319° track to POBED.
RIMOS 9A	Climb on 148° track to 2470', turn LEFT to CR NDB, turn RIGHT on 354° track to RIMOS.
TUMBI 6A	Climb on 148° track to 2470', turn LEFT on 328° track, turn RIGHT, intercept 232° bearing from CR NDB to TUMBI.

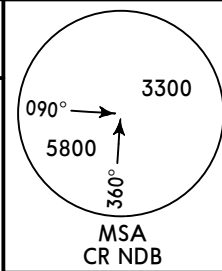
UKLN/CWC
CHERNIVTSI INTL

JEPPESEN
2 NOV 18 **10-3C** **Eff 8 Nov**

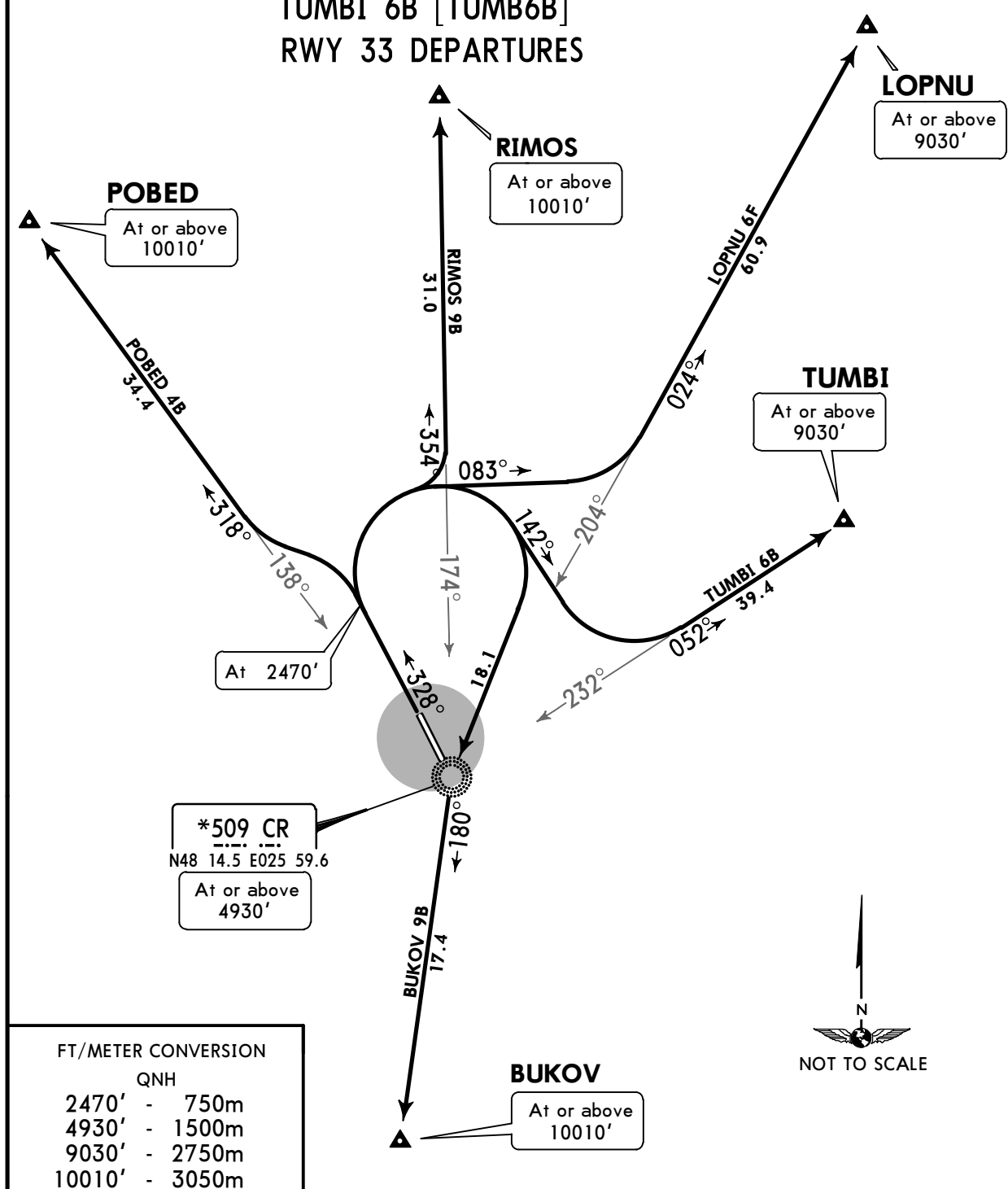
CHERNIVTSI, UKRAINE

SID

Apt Elev **827'** Trans level: By ATC Trans alt: 10010'
Expect close-in obstacles.



BUKOV 9B [BUK09B]
LOPNU 6F [LOPN6F]
POBED 4B [POBE4B]
RIMOS 9B [RIMO9B]
TUMBI 6B [TUMB6B]
RWY 33 DEPARTURES



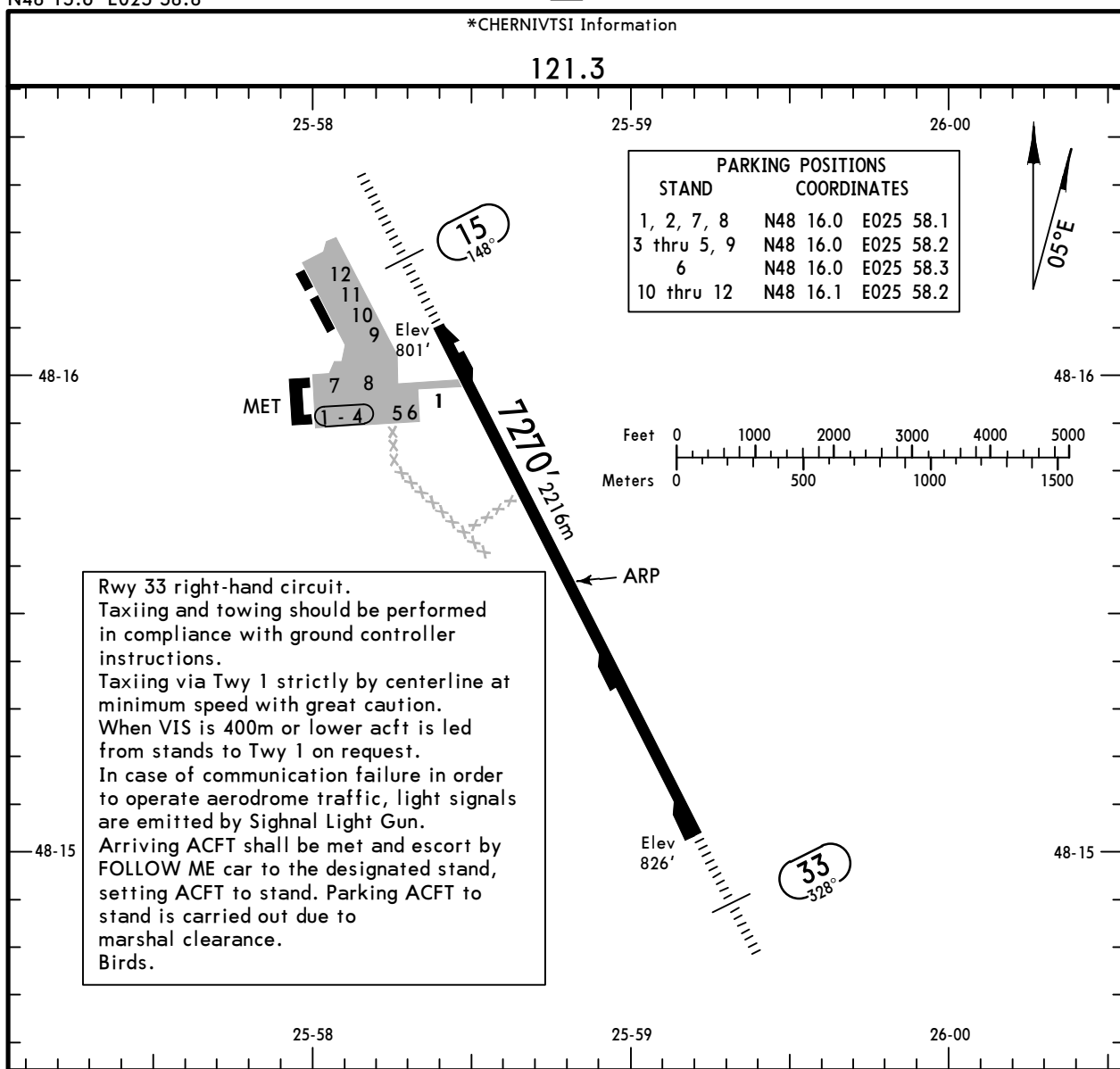
FT/METER CONVERSION	
QNH	
2470'	- 750m
4930'	- 1500m
9030'	- 2750m
10010'	- 3050m

SID	ROUTING
BUKOV 9B	Climb on 328° track to 2470', turn RIGHT to CR NDB, turn LEFT on 180° track to BUKOV.
LOPNU 6F	Climb on 328° track to 2470', turn RIGHT, 083° track, turn LEFT, intercept 204° bearing from CR NDB to LOPNU.
POBED 4B	Climb on 328° track to 2470', turn LEFT, intercept 138° bearing from CR NDB to POBED.
RIMOS 9B	Climb on 328° track to 2470', turn RIGHT, intercept 174° bearing from CR NDB to RIMOS.
TUMBI 6B	Climb on 328° track to 2470', turn RIGHT, 142° track, turn LEFT, intercept 232° bearing from CR NDB to TUMBI.

UKLN/CWC
 Apt Elev **827'**
 N48 15.6 E025 58.8

JEPPESEN
 23 APR 21 **(10-9)**

CHERNIVTSI, UKRAINE
CHERNIVTSI INTL



RWY		USABLE LENGTHS		TAKE-OFF	WIDTH
		Threshold	Glide Slope		
15 33	HIRL (60m) HIALS PAPI-L (angle 3.0°)	6116'	1864m		138' 42m
		6237'	1901m		

Standard	TAKE-OFF	
Low Visibility Take-off	Day: RL or RCLM Night: RL	Adequate vis ref (Day only)

A	RVR 300m	400m	500m
B			
C			
D			

UKLN/CWC
CHERNIVTSI INTL

JEPPESEN
7 JAN 22 **(11-1)**

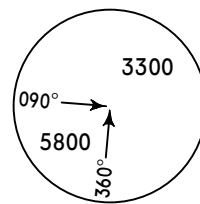
CHERNIVTSI, UKRAINE
ILS Rwy 15

*CHERNIVTSI Information

BRIEFING STRIP™

121.3

LOC ICN *109.5	Final Apch Crs 148°	GS OM 1509' (708')	ILS DA(H) Refer to Minimums	Apt Elev 827' Rwy 801'
-----------------------------	----------------------------------	---------------------------------	--------------------------------------	---------------------------



MISSED APCH: Climb on 148° to 1970', then turn LEFT to NDB climbing to 3940', then according to chart.

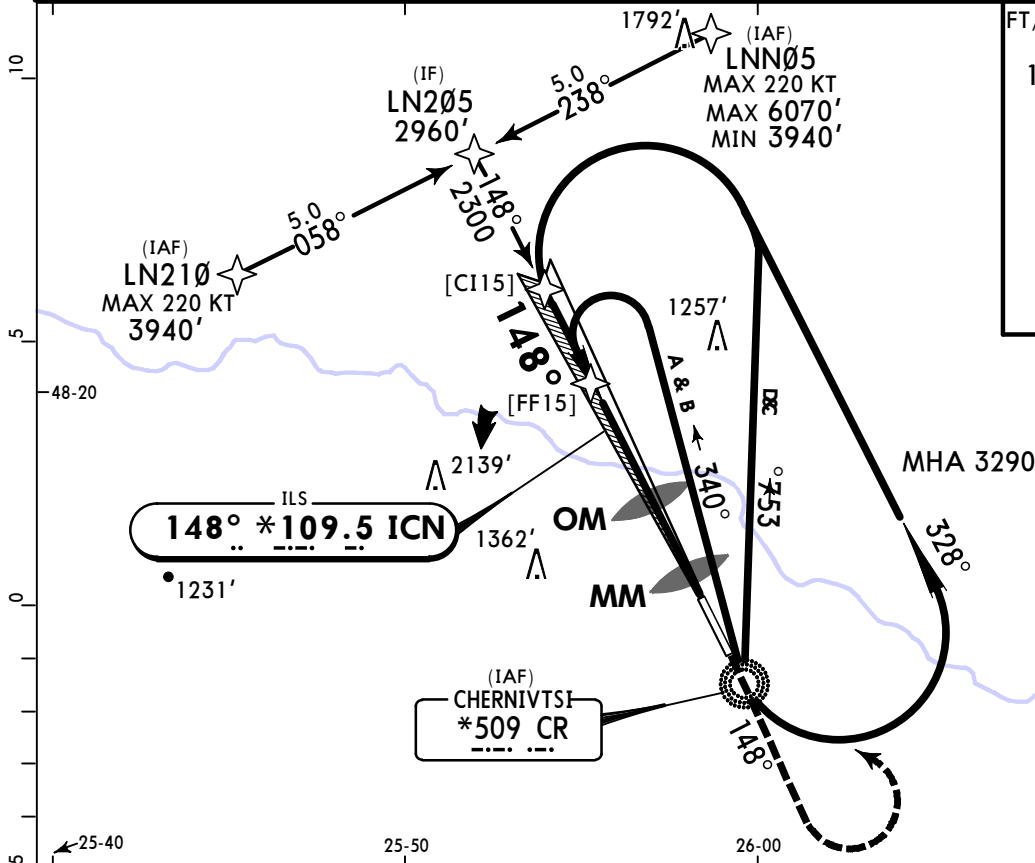
Alt Set: hPa (MM on req) Rwy Elev: 29 hPa Trans level: By ATC Trans alt: 10010'

- RNP 1 required after LN210 and LNN05 for Transition to FAP.
- ACFT not equipped for RNP 1 use conventional procedures through CR NDB

MSA CR NDB

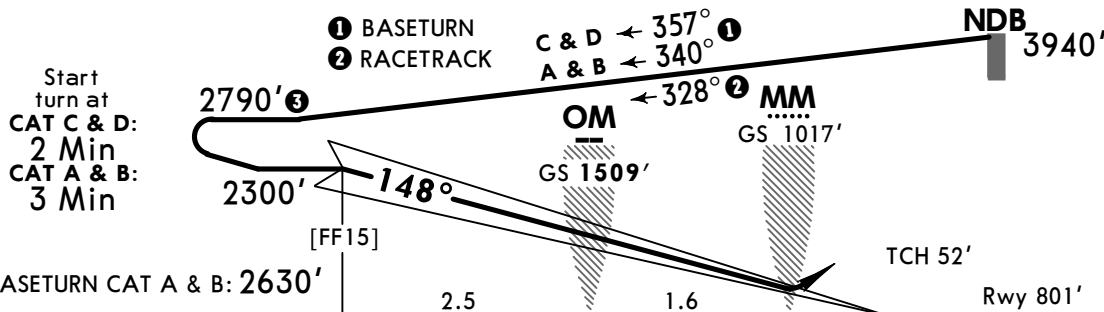
FT/METER CONVERSION
QNH

10010'	-	3050m
6070'	-	1850m
3940'	-	1200m
3290'	-	1000m
2960'	-	900m
2790'	-	850m
2630'	-	800m
2300'	-	700m
1970'	-	600m

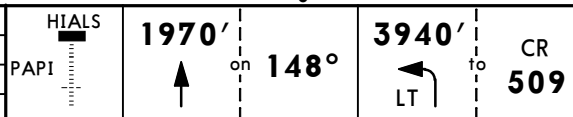


ILS
148° *109.5 ICN

(IAF)
CHERNIVTSI
***509 CR**



Gnd speed-Kts	70	90	100	120	140	160	
GS	3.00°	372	478	531	637	743	849



Standard		STRAIGHT-IN LANDING RWY 15 ILS	
		DA(H) A: 1024' (223')	C: 1044' (243')
		B: 1034' (233')	D: 1054' (253')
		FULL	ALS out
A	RVR 800m		RVR 1200m
B			
C			
D			

CIRCLE-TO-LAND Prohibited West of apt between 180° and 317° from ARP		
Max Kts	MDA(H)	VIS
100	1360' (533')	1500m
135	1370' (543')	1600m
180	1770' (943')	2400m
205	1880' (1053')	3600m

PANS OPS

UKLN/CWC
CHERNIVTSI INTL

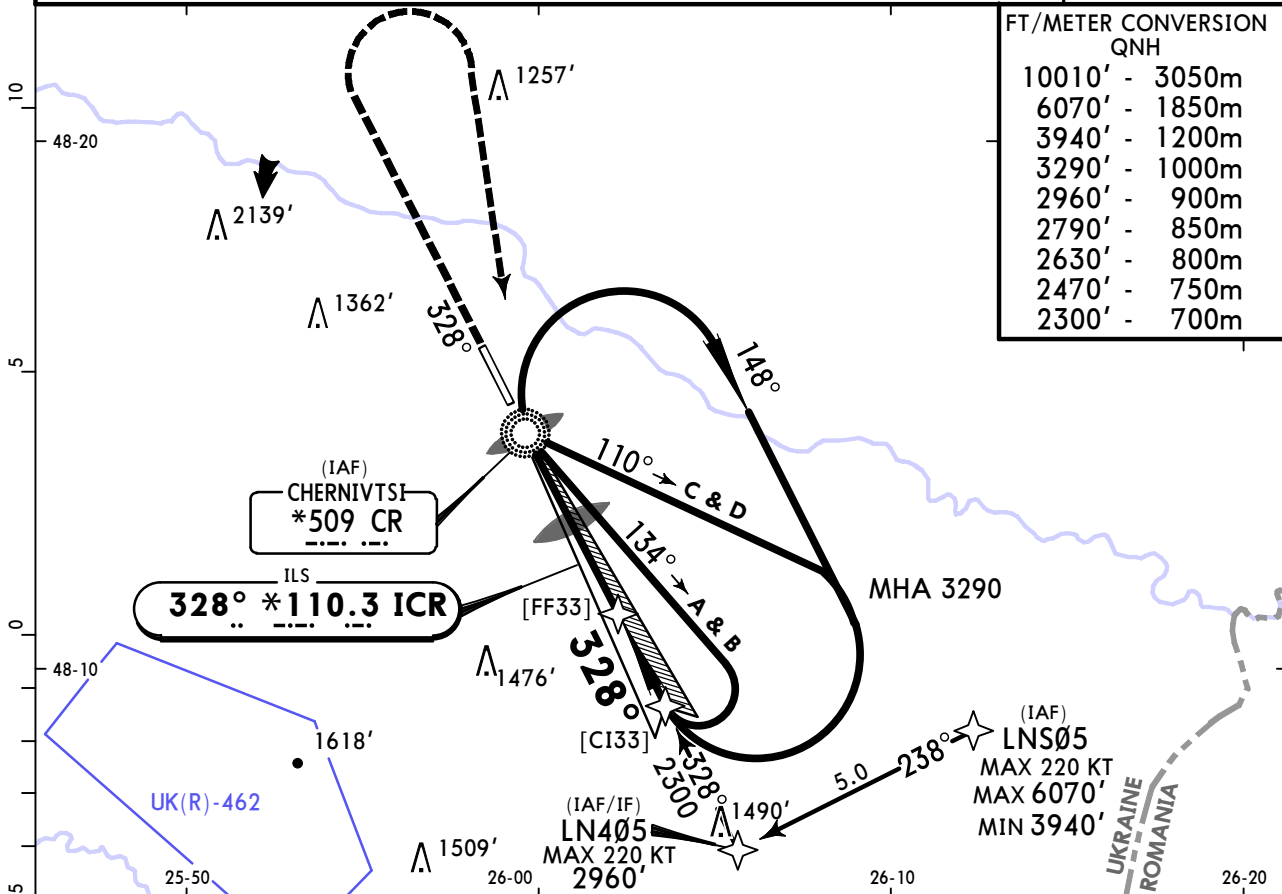
JEPPESEN
7 JAN 22 **(11-2)**

CHERNIVTSI, UKRAINE
ILS Rwy 33

*CHERNIVTSI Information

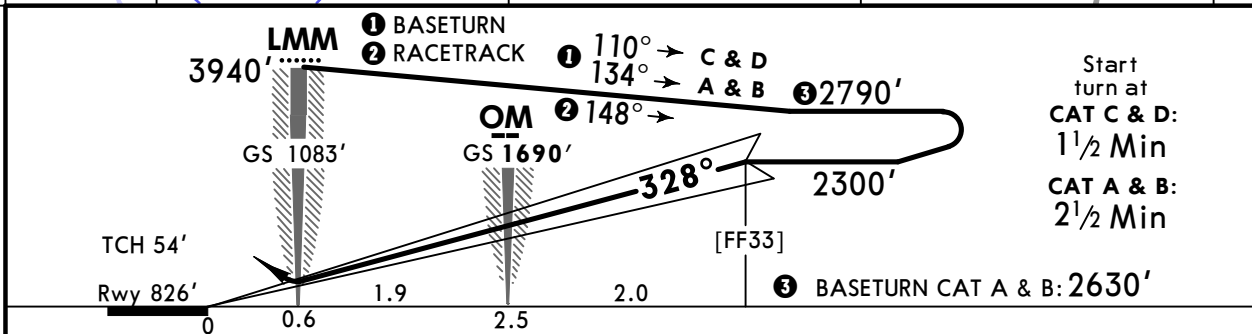
BRIEFING STRIP™

121.3					
LOC ICR *110.3	Final Apch Crs 328°	GS OM 1690' (864')	ILS DA(H) Refer to Minimums	Apt Elev 827'	Rwy 826'
MISSED APCH: Climb on 328° to 2470', then turn RIGHT to NDB climbing to 3940', then according to chart.					<p>MSA CR NDB</p>
Alt Set: hPa (MM on req) Rwy Elev: 30 hPa Trans level: By ATC Trans alt: 10010'					
1. RNP 1 required after LN405 and LNS05 for Transition to FAP. 2. ACFT not equipped for RNP 1 use conventional procedures through CR NDB					



FT/METER CONVERSION
QNH

10010'	3050m
6070'	1850m
3940'	1200m
3290'	1000m
2960'	900m
2790'	850m
2630'	800m
2470'	750m
2300'	700m



Gnd speed-Kts	70	90	100	120	140	160	HIALS PAPI 2470' on 328° 3940' to CR 509
GS	3.00°	372	478	531	637	849	

PANS OPS	Standard		STRAIGHT-IN LANDING RWY 33		ILS		CIRCLE-TO-LAND	
	DA(H)		A: 1029' (203') C: 1049' (223')		B: 1039' (213') D: 1059' (233')		Prohibited West of apt between 180° and 317° from ARP	
	FULL		ALS out		Max Kts		MDA(H) VIS	
	A	RVR 750m			100	1360' (533')	1500m	
	B				135	1370' (543')	1600m	
C	RVR 800m	RVR 1200m		180	1770' (943')	2400m		
D				205	1880' (1053')	3600m		

UKLN/CWC
CHERNIVTSI INTL

JEPPESEN
7 JAN 22 **(16-2)**

CHERNIVTSI, UKRAINE
NDB Rwy 33

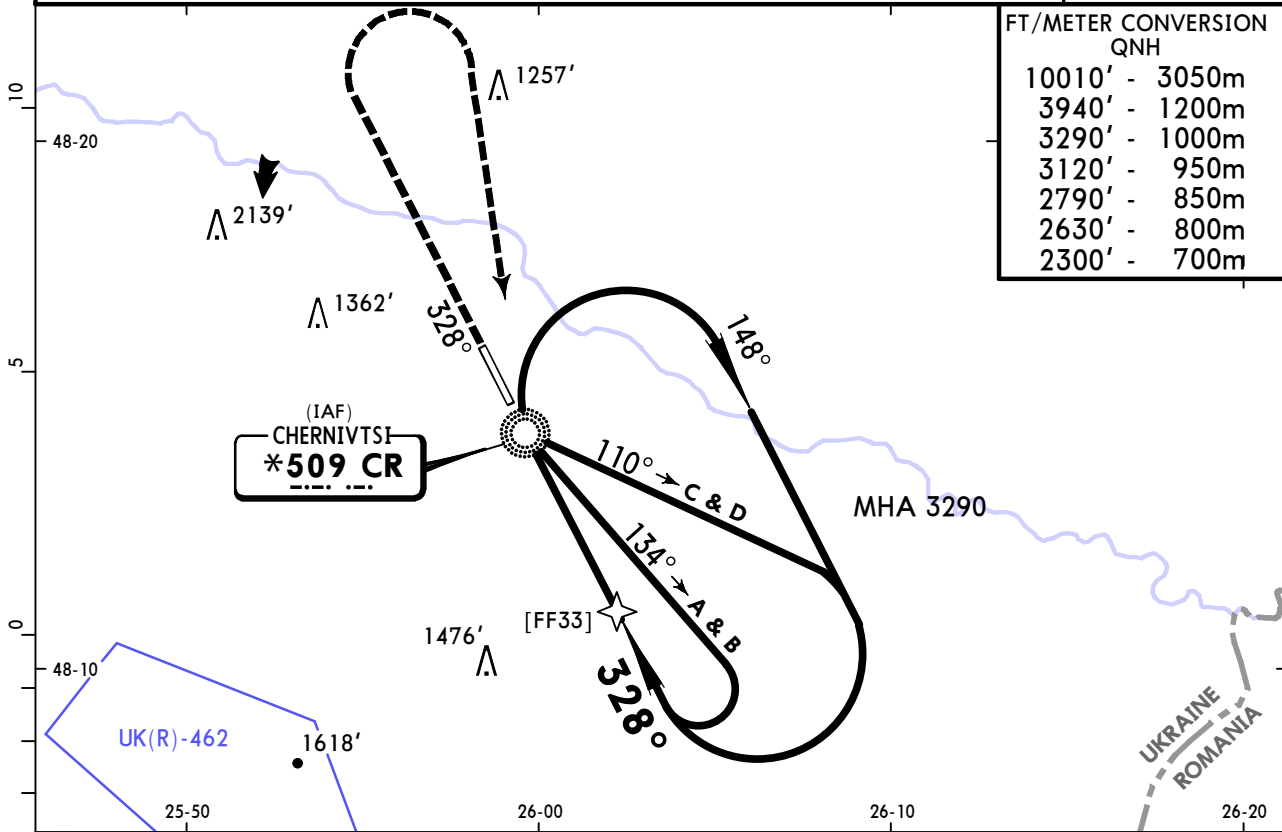
*CHERNIVTSI Information

BRIEFING STRIP™

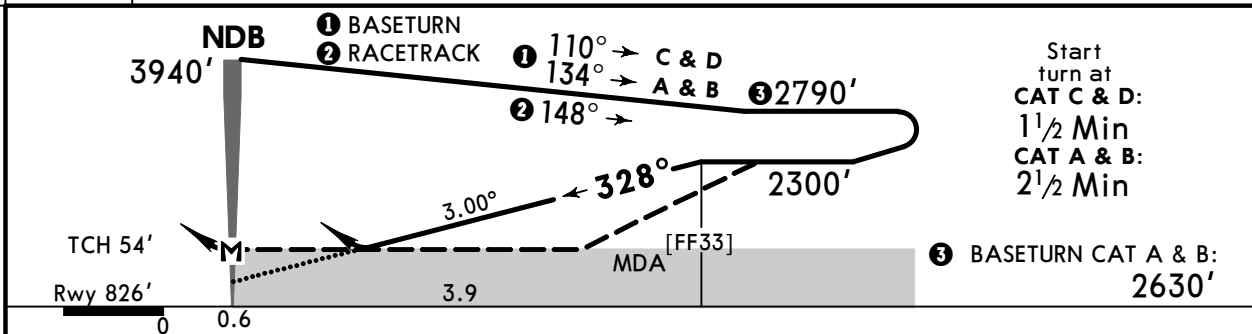
121.3					<p>MSA CR NDB</p>
NDB CR *509	Final Apch Crs 328°	No FAF	DA/MDA(H) (CONDITIONAL) 1790' (964')	Apt Elev 827' Rwy 826'	
MISSED APCH: Climb on 328° to 3120', then turn RIGHT to NDB climbing to 3940', then according to chart.					
Alt Set: hPa (MM on req) Rwy Elev: 30 hPa Trans level: By ATC Trans alt: 10010'					

FT/METER CONVERSION
QNH

10010'	3050m
3940'	1200m
3290'	1000m
3120'	950m
2790'	850m
2630'	800m
2300'	700m



DIST to NDB	3.0
ALTITUDE	2020'



Gnd speed-Kts	70	90	100	120	140	160	
Descent Angle	3.00°	372	478	531	637	849	
MAP at NDB	Timing not authorized for defining the MAP.						

Standard				CIRCLE-TO-LAND	
STRAIGHT-IN LANDING RWY 33		CDFA with FF33		non-CDFA w/o FF33	
DA/MDA(H) 1790' (964')		ALS out		MDA(H) 1790' (964')	
A	RVR 1500m	RVR 4300m	RVR 4700m	Max Kts	MDA(H) VIS
B	RVR 2400m	RVR 4500m	RVR 4900m	100	1810' (983') 1 1500m
C				135	1810' (983') 1 1600m
D				180	1810' (983') 1 2400m
				205	1880' (1053') 1 3600m

Chart changes since cycle 04-2025

ADD = added chart, REV = revised chart, DEL = deleted chart.

ACT	PROCEDURE IDENT	INDEX	REV DATE	EFF DATE
CHERNIVTSI, (CHERNIVTSI INTL - UKLN)				

TERMINAL CHART CHANGE NOTICES

No Chart Change Notices for Airport UKLN