

List of pages in this Trip Kit

Trip Kit Index

Airport Information For UKLR

Terminal Charts For UKLR

Revision Letter For Cycle 05-2025

Change Notices

Notebook

General Information

Location: RIVNE UKR
ICAO/IATA: UKLR / RWN
Lat/Long: N50° 36.50', E026° 08.38'
Elevation: 755 ft

Airport Use: Public
Daylight Savings: Observed
UTC Conversion: -2:00 = UTC
Magnetic Variation: 6.0° E

Fuel Types: Jet A-1
Customs: Yes
Airport Type: IFR
Landing Fee: Yes
Control Tower: No
Jet Start Unit: No
LLWS Alert: No
Beacon: No

Sunrise: 0217 Z
Sunset: 1807 Z

Runway Information

Runway: 11
Length x Width: 8615 ft x 138 ft
Surface Type: concrete
TDZ-Elev: 748 ft
Lighting: Edge, ALS

Runway: 29
Length x Width: 8615 ft x 138 ft
Surface Type: concrete
TDZ-Elev: 751 ft
Lighting: Edge, ALS

Communication Information

Lviv Information: 126.825 Flight Info Service RCO
Rivne Information: 123.700

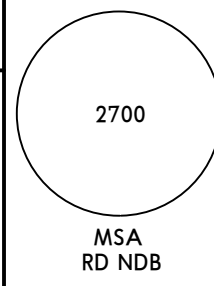
UKLR/RWN
RIVNE INTL

JEPPESEN
16 APR 21 **10-2** Eff 22 Apr

RIVNE, UKRAINE
STAR

Apt Elev
755'

Alt Set: hPa (MM on request)
Trans level: By ATC Trans alt: 10010'

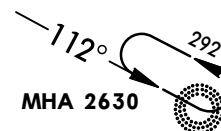


DORER 4P [DORE4P]
DORER 4Q [DORE4Q]
RELNO 4P [RELN4P]
RELNO 4Q [RELN4Q]
ARRIVALS
(ALL RWYS)



HOLDINGS OVER RD NDB

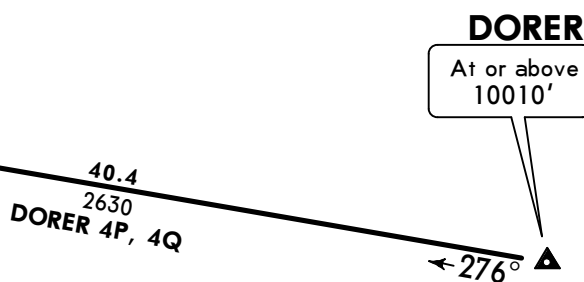
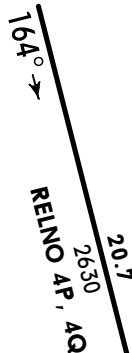
Runway 11



Runway 29



RELNO
At or above
9030'



DORER
At or above
10010'

***678 RD**
N50 35.8 E026 10.4
At or above
4930'

FT/METER CONVERSION

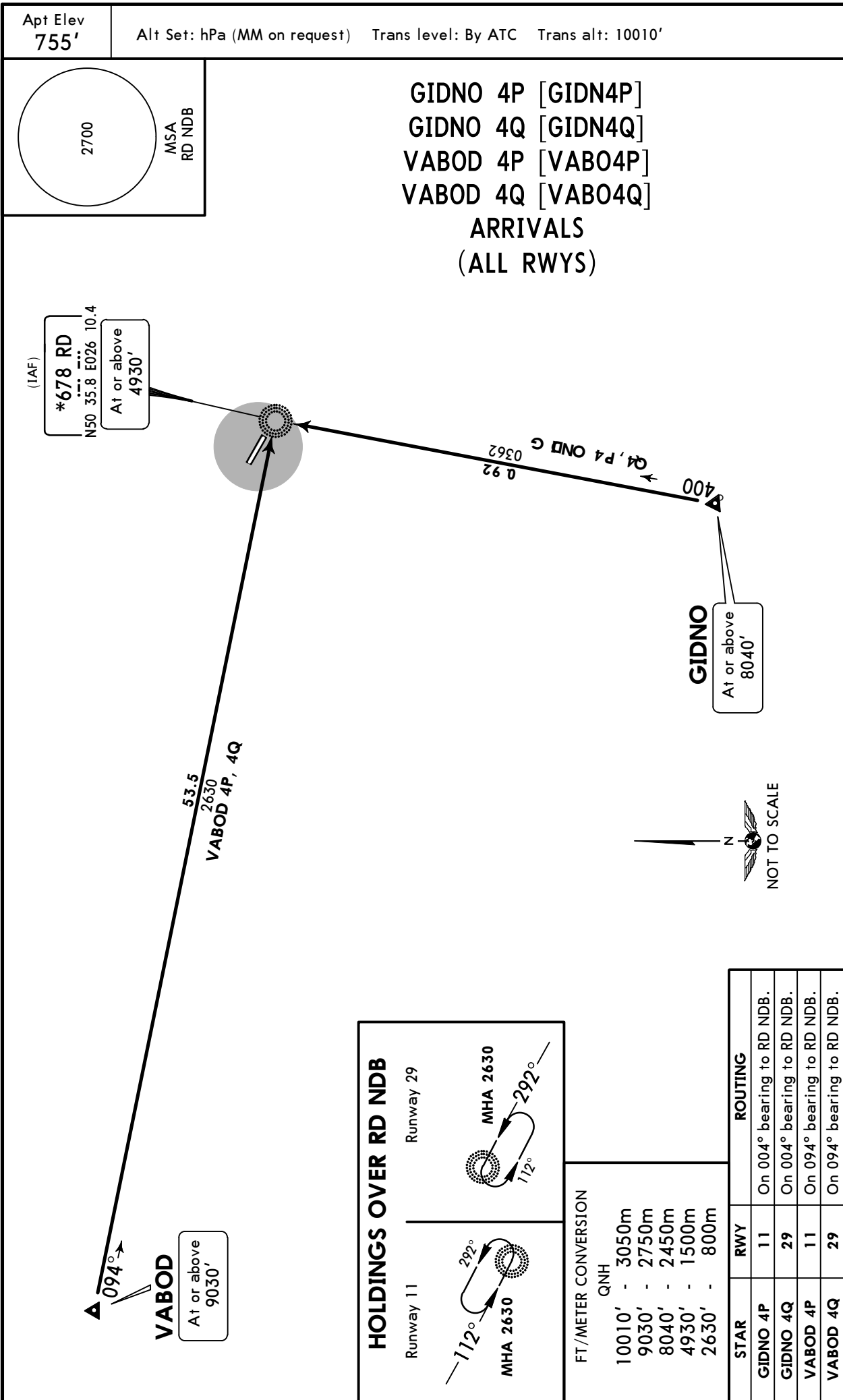
QNH	
10010'	- 3050m
9030'	- 2750m
4930'	- 1500m
2630'	- 800m

STAR	RWY	ROUTING
DORER 4P	11	On 276° bearing to RD NDB.
DORER 4Q	29	On 276° bearing to RD NDB.
RELNO 4P	11	On 164° bearing to RD NDB.
RELNO 4Q	29	On 164° bearing to RD NDB.

UKLR/RWN
RIVNE INTL

JEPPESEN
16 APR 21 **(10-2A)** Eff 22 Apr

RIVNE, UKRAINE
STAR



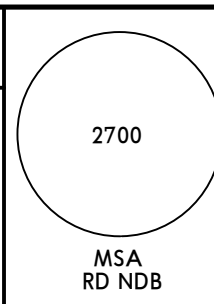
UKLR/RWN
RIVNE INTL

JEPPESEN
16 APR 21 10-3 Eff 22 Apr

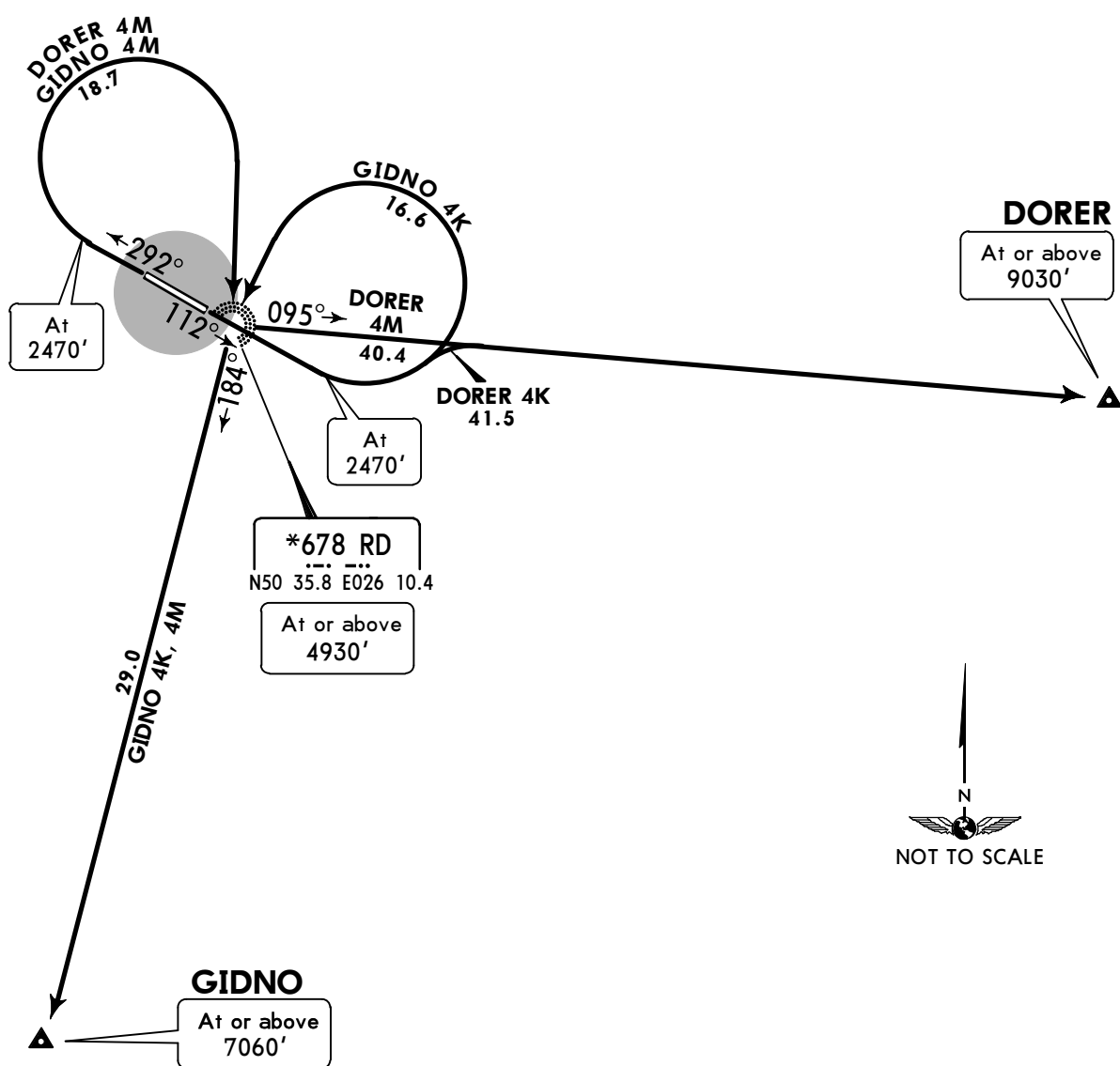
RIVNE, UKRAINE
SID

Apt Elev
755'

Trans level: By ATC Trans alt: 10010'
RWY 11: EXPECT close-in obstacles.



DORER 4K [DORE4K]
DORER 4M [DORE4M]
GIDNO 4K [GIDN4K]
GIDNO 4M [GIDN4M]
DEPARTURES
(ALL RWYS)



FT/METER CONVERSION	
QNH	
2470'	- 750m
4930'	- 1500m
7060'	- 2150m
9030'	- 2750m
10010'	- 3050m

SID	RWY	ROUTING
DORER 4K	11	Climb on 112° track to 2470', turn LEFT, intercept 095° bearing from RD NDB to DORER.
DORER 4M	29	Climb on 292° track to 2470', turn RIGHT to RD NDB, turn LEFT, 095° bearing to DORER.
GIDNO 4K	11	Climb on 112° track to 2470', turn LEFT to RD NDB, turn LEFT, 184° bearing to GIDNO.
GIDNO 4M	29	Climb on 292° track to 2470', turn RIGHT to RD NDB, turn RIGHT, 184° bearing to GIDNO.

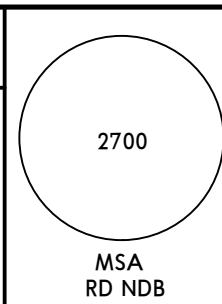
UKLR/RWN
RIVNE INTL

JEPPESEN
16 APR 21 **10-3A** Eff 22 Apr

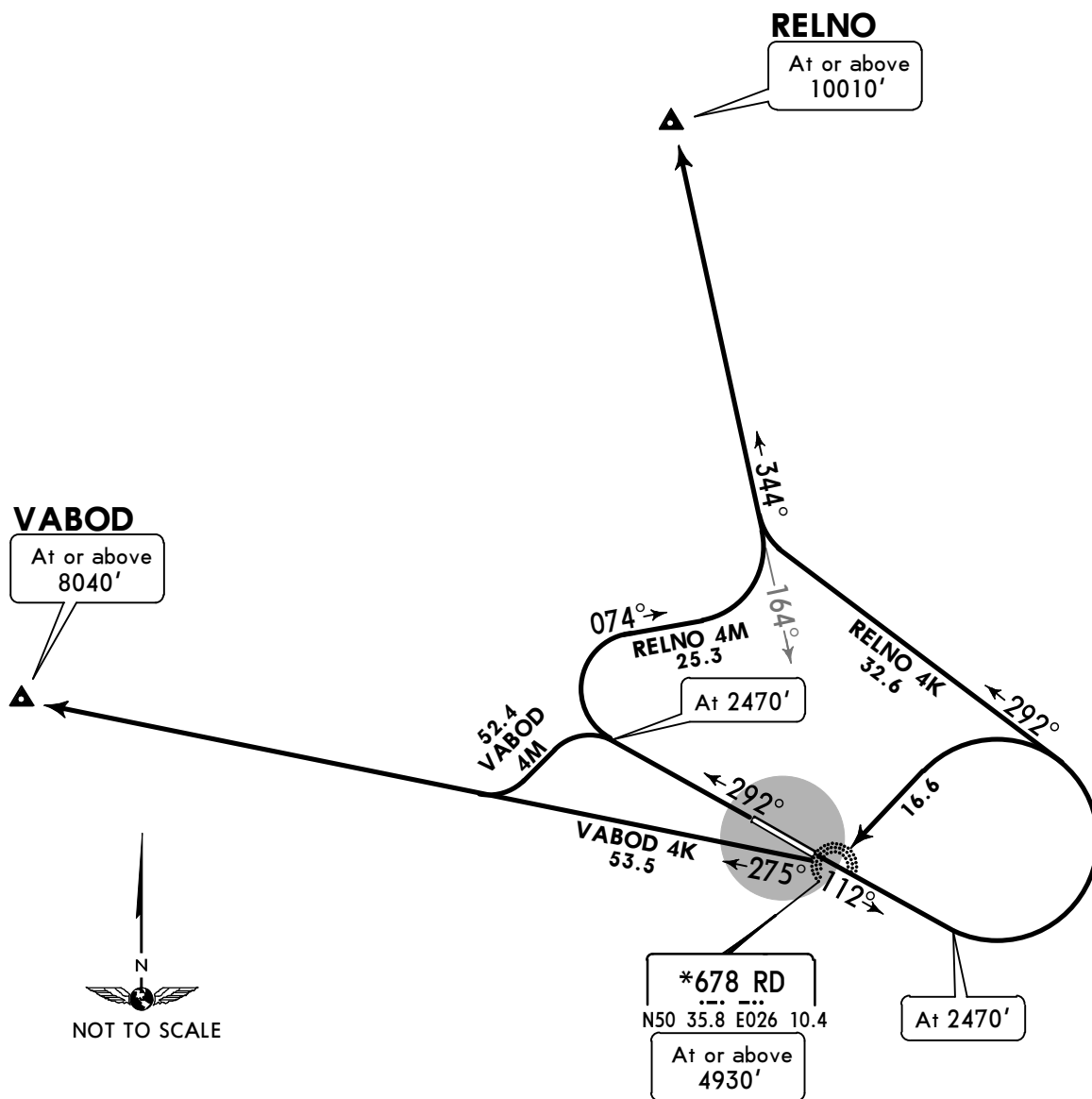
RIVNE, UKRAINE
SID

Apt Elev
755'

Trans level: By ATC Trans alt: 10010'
RWY 11: EXPECT close-in obstacles.



RELNO 4K [RELN4K]
RELNO 4M [RELN4M]
VABOD 4K [VABO4K]
VABOD 4M [VABO4M]
DEPARTURES
(ALL RWYS)



FT/METER CONVERSION	
QNH	
2470'	- 750m
4930'	- 1500m
8040'	- 2450m
10010'	- 3050m

SID	RWY	ROUTING
RELNO 4K	11	Climb on 112° track to 2470', turn LEFT, 292° track, turn RIGHT, intercept 344° bearing from RD NDB to RELNO.
RELNO 4M	29	Climb on 292° track to 2470', turn RIGHT, 074° track, turn LEFT, intercept 344° bearing from RD NDB to RELNO.
VABOD 4K	11	Climb on 112° track to 2470', turn LEFT to RD NDB, turn RIGHT, 275° bearing to VABOD.
VABOD 4M	29	Climb on 292° track to 2470', turn LEFT, intercept 275° bearing from RD NDB to VABOD.

UKLR/RWN

Apt Elev **755'**
N50 36.5 E026 08.4

JEPPESEN

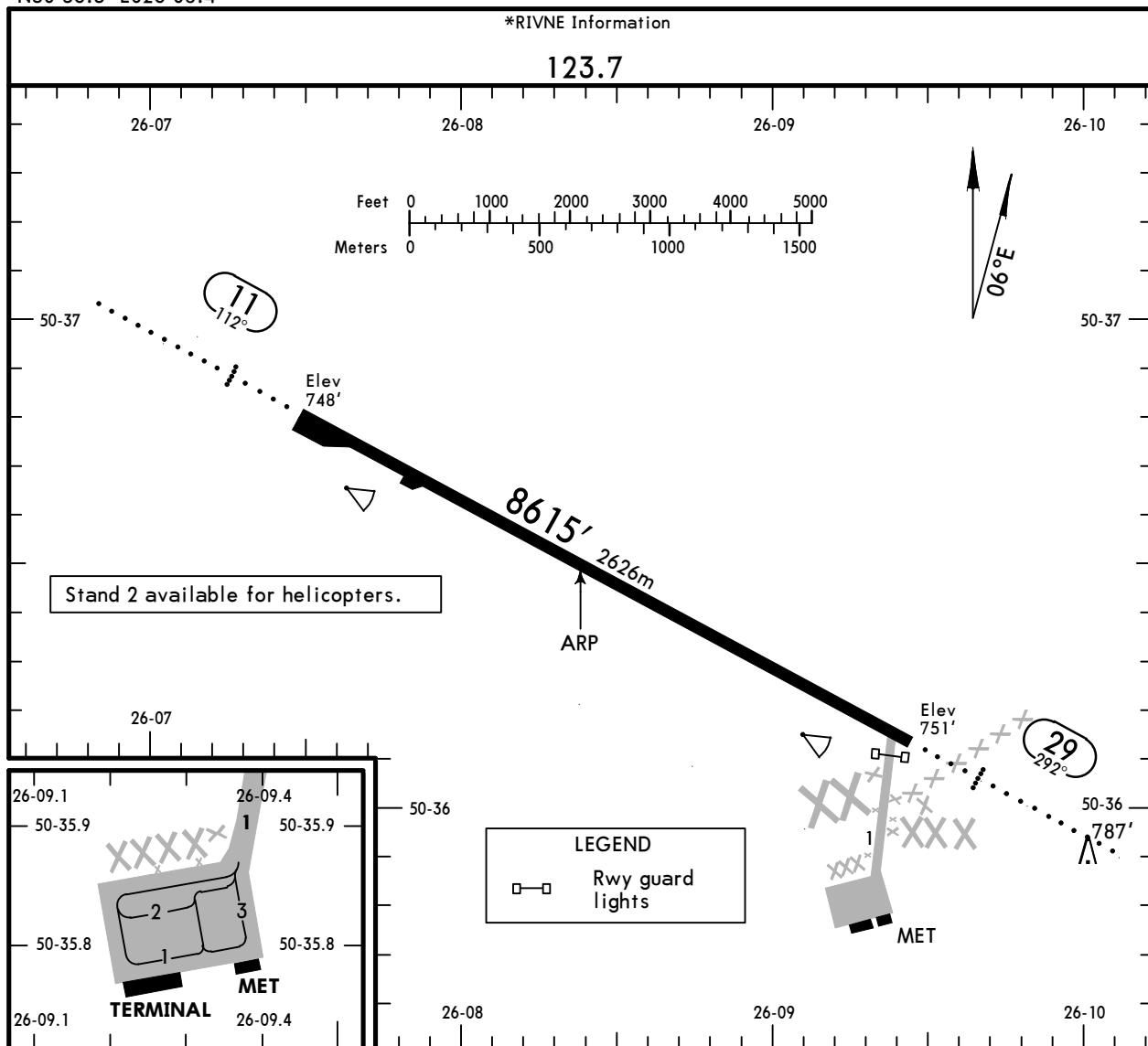
9 APR 21

(10-9)

Eff 22 Apr

RIVNE, UKRAINE

RIVNE INTL



ADDITIONAL RUNWAY INFORMATION

RWY					USABLE LENGTHS		WIDTH
					LANDING BEYOND		
				Threshold	Glide Slope	TAKE-OFF	
11	RL (60m)	ALS	PAPI-L (angle 2.70°)	RVR	①	8123' 2476m	138'
29	RL (60m)	ALS	PAPI-L (angle 3.00°)	RVR			42m

① LDA 8123' (2476m)

Std		TAKE-OFF			
RL & RCLM	RL	RL or RCLM		Adequate Vis Ref	
DAY	NIGHT	DAY		DAY	NIGHT
R300m		R400m		R/V500m	NA

(CIO) Close-in obstacle: 787' petrol station 0.4NM (806m) in front of THR Rwy 29.

UKLR/RWN RIVNE INTL

JEPPESEN
27 AUG 21 **(16-1)** **Eff 9 Sep**

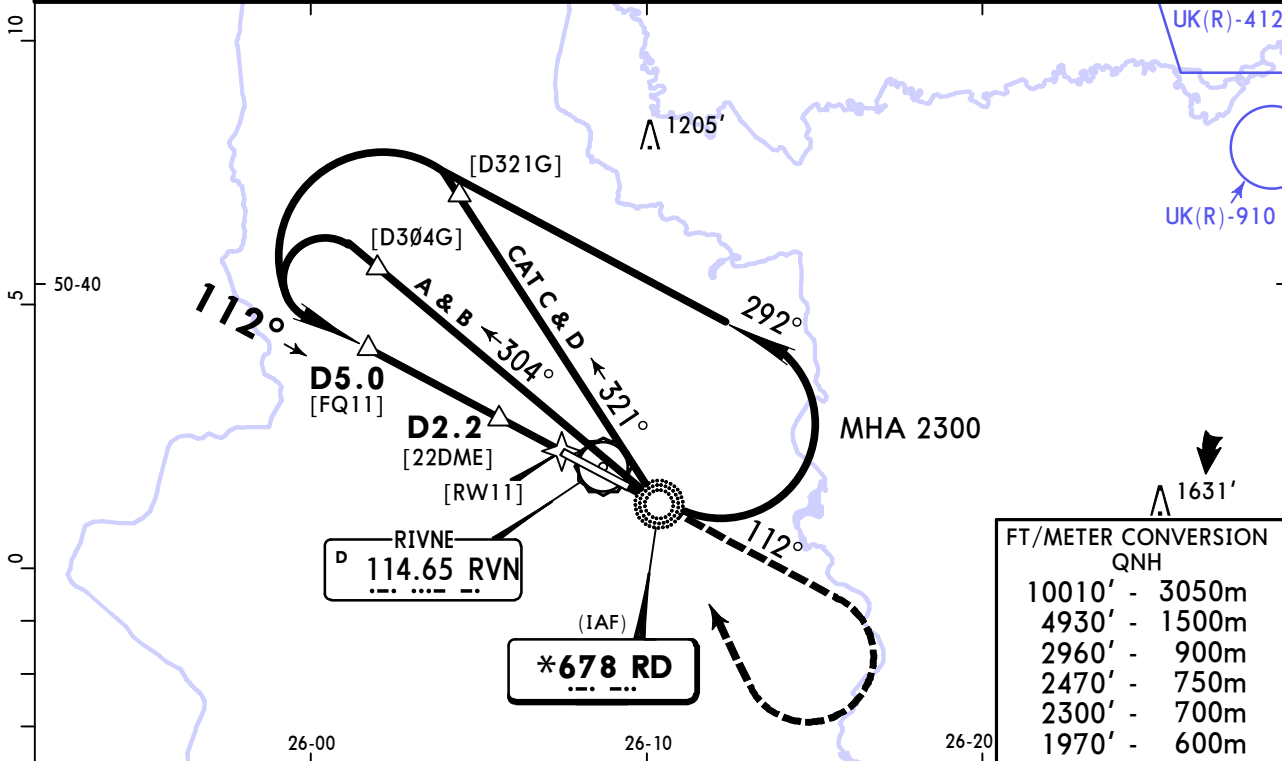
RIVNE, UKRAINE NDB Rwy 11

*RIVNE Information						<div style="border: 1px solid black; border-radius: 50%; width: 100px; height: 100px; margin: 0 auto;"></div> <p>2700</p> <p>MSA RD NDB</p>
123.7						
NDB RD *678	Final Apch Crs 112°	D5.0 MANDATORY 1970' (1222')	DA/MDA(H) (CONDITIONAL) 1120' (372')	Apt Elev 755'	Rwy 748'	

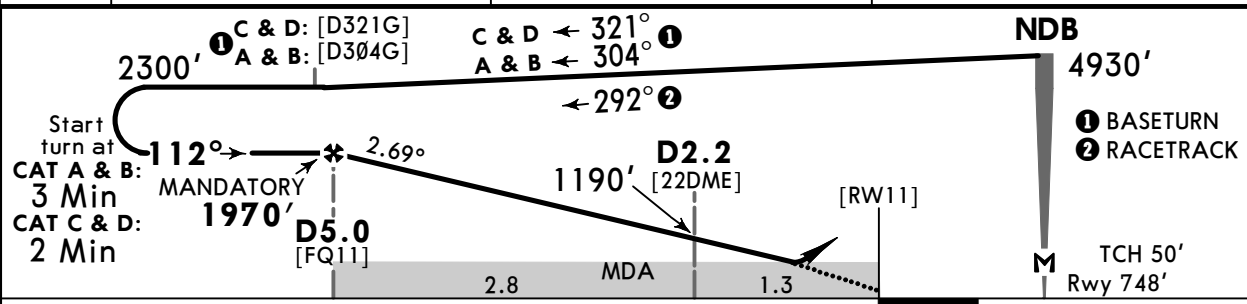
MISSED APCH: Climb on 112° to 2470', then turn RIGHT to RD NDB climbing to 2960', then according to chart.

Alt Set: hPa (MM on req) Rwy Elev: 27 hPa Trans level: By ATC Trans alt: 10010'

DME required for FAF and SDF determination.



RVN DME	4.9	3.8	2.7
ALTITUDE	1949'	1640'	1332'



Gnd speed-Kts	70	90	100	120	140	160	PAPI 2470' on 112° 2960' RD 678 ↑ RT
Descent Angle	2.69°	333	428	476	571	761	
MAP at NDB							

Timing not authorized for defining the MAP.

PANS OPS	STRAIGHT-IN LANDING				CIRCLE-TO-LAND	
	Std		With D2.2 CDFA		W/o D2.2 CDFA	
			DA/MDA(H) 1120' (372')		DA/MDA(H) 1270' (522')	
			ALS out		ALS out	
	A		R1500m	R1500m	Max Kts	MDA(H)
B		R1500m	R1500m	100	1280' (525') V1500m	
C	R1500m			135	1280' (525') V1600m	
D		R1700m	R2200m	180	1360' (605') V2400m	
			R2400m	205	1460' (705') V3600m	

■ VNAV DA(H) in lieu of MDA(H) depends on operator policy.

UKLR/RWN RIVNE INTL

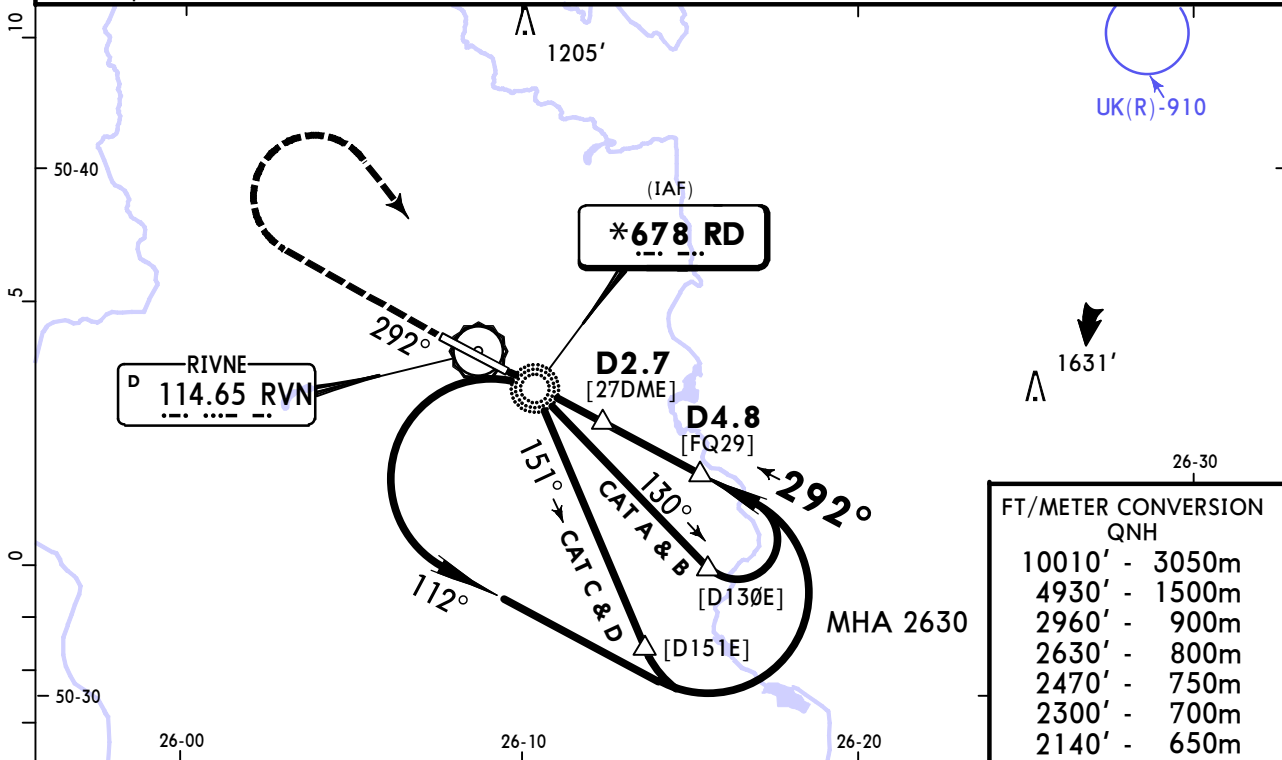


27 AUG 21 **16-2** Eff 9 Sep

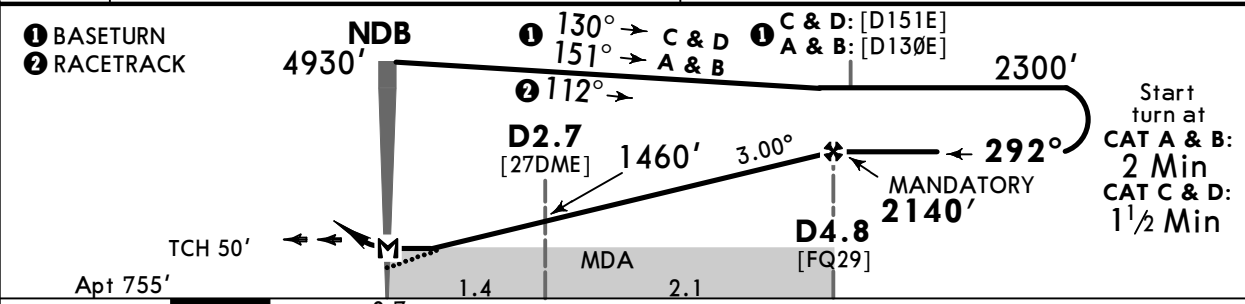
RIVNE, UKRAINE NDB Rwy 29

*RIVNE Information					<div style="border: 1px solid black; border-radius: 50%; width: 100px; height: 100px; margin: 0 auto; display: flex; align-items: center; justify-content: center;"> 2700 </div> <p>MSA RD NDB</p>	
123.7	NDB RD *678	Final Apch Crs 292°	D4.8 MANDATORY 2140' (1385')	DA/MDA(H) (CONDITIONAL) 1120' (365')		Apt Elev 755'
<p>MISSED APCH: Climb on 292° to 2470', then turn RIGHT to RD NDB climbing to 2960', then according to chart.</p>						

Alt Set: hPa (MM on req) Apt Elev: 27 hPa Trans level: By ATC Trans alt: 10010'
DME required for FAF and SDF determination.



RVN DME	2.7	3.8
ALTITUDE	1467'	1808'



Gnd speed-Kts	70	90	100	120	140	160	ALS PAPI 2470' on 292° 2960' RT RD 678	
Descent Angle	3.00°	372	478	531	637	743		849
MAP at NDB								
D4.8 to MAP	3.5	3:00	2:20	2:06	1:45	1:30	1:19	

	STRAIGHT-IN LANDING		Max Kts	CIRCLE-TO-LAND	
	With D2.7 CDFA	W/o D2.7 CDFA		MDA(H)	
	1 DA/MDA(H) 1120' (365')	1 DA/MDA(H) 1370' (615')			
	ALS out	ALS out			
A	R1500m	R1500m	100	1370' (615')	V1500m
B			135	1370' (615')	V1600m
C			180	1370' (615')	V2400m
D			205	1460' (705')	V3600m

1 VNAV DA(H) in lieu of MDA(H) depends on operator policy.
CHANGES: UK(R)-910 added. Ground speed box. © JEPPesen, 2016, 2021. ALL RIGHTS RESERVED.

Chart changes since cycle 04-2025

ADD = added chart, REV = revised chart, DEL = deleted chart.

ACT	PROCEDURE IDENT	INDEX	REV DATE	EFF DATE
-----	-----------------	-------	----------	----------

RIVNE, (RIVNE INTL - UKLR)

TERMINAL CHART CHANGE NOTICES

Chart Change Notices for Airport UKLR

Type: Terminal

Effectivity: Temporary

Begin Date: 20210909

End Date: Until Further Notice

Based on AIRAC SUP 08/21, PAPI for Rwy 11/29 out of service.