

## List of pages in this Trip Kit

Trip Kit Index  
Airport Information For UKLT  
Terminal Charts For UKLT  
Revision Letter For Cycle 09-2019  
Change Notices  
Notebook

## General Information

Location: TERNOPIIL UKR  
ICAO/IATA: UKLT / TNL  
Lat/Long: N49° 31.5', E025° 42.9'  
Elevation: 1073 ft

Airport Use: Public  
Daylight Savings: Observed  
UTC Conversion: -2:00 = UTC  
Magnetic Variation: 6.0° E

Fuel Types: Jet A-1  
Customs: Yes  
Airport Type: IFR  
Landing Fee: Yes  
Control Tower: No  
Jet Start Unit: No  
LLWS Alert: No  
Beacon: No

Sunrise: 0241 Z  
Sunset: 1746 Z

## Runway Information

Runway: 10  
Length x Width: 6588 ft x 138 ft  
Surface Type: concrete  
TDZ-Elev: 1072 ft

Runway: 28  
Length x Width: 6588 ft x 138 ft  
Surface Type: concrete  
TDZ-Elev: 1020 ft

## Communication Information

Ternopil Information: 134.300 AFIS

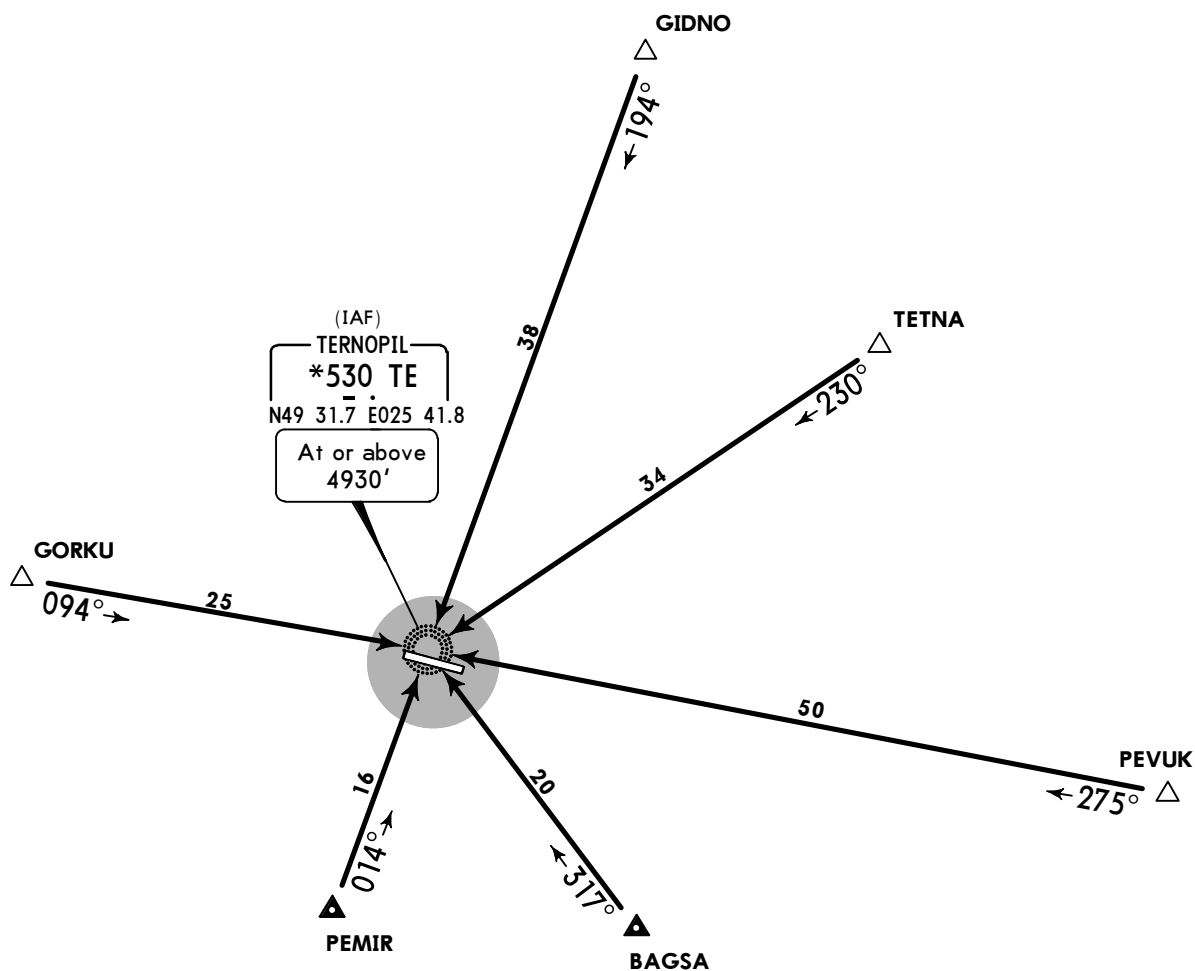
UKLT/TNL  
TERNOPIL NATL

JEPPESEN  
15 FEB 19 10-2 Eff 28 Feb

TERNOPIL, UKRAINE  
ARRIVALS

Apt Elev 1073'  
Alt Set: hPa  
Trans level: By ATC Trans alt: 10010'

### RWYS 10, 28 ARRIVALS



FT/METER CONVERSION	
QNH	
10010'	- 3050m
4930'	- 1500m



#### ROUTING

To TE NDB, then according to approach chart.

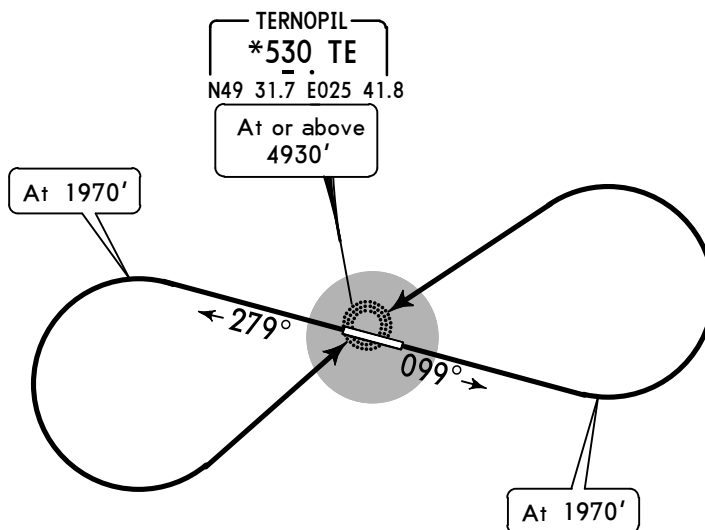
**UKLT/TNL**  
**TERNOPIL NATL**

**JEPPESEN**  
 15 FEB 19 **10-3** **Eff 28 Feb**

**TERNOPIL, UKRAINE**  
**DEPARTURES**

Apt Elev **1073'** Trans level: By ATC Trans alt: 10010'

**DEPARTURES**



These departures require a minimum climb gradient of

**RWY 10:** 5.0% up to 4930'.

**RWY 28:** 3.5% up to 1970', then 5.0% up to 4930'.

Gnd speed-KT	75	100	150	200	250	300
3.5% V/V (fpm)	266	354	532	709	886	1063
5.0% V/V (fpm)	380	506	760	1013	1266	1519

If unable advise ATC.

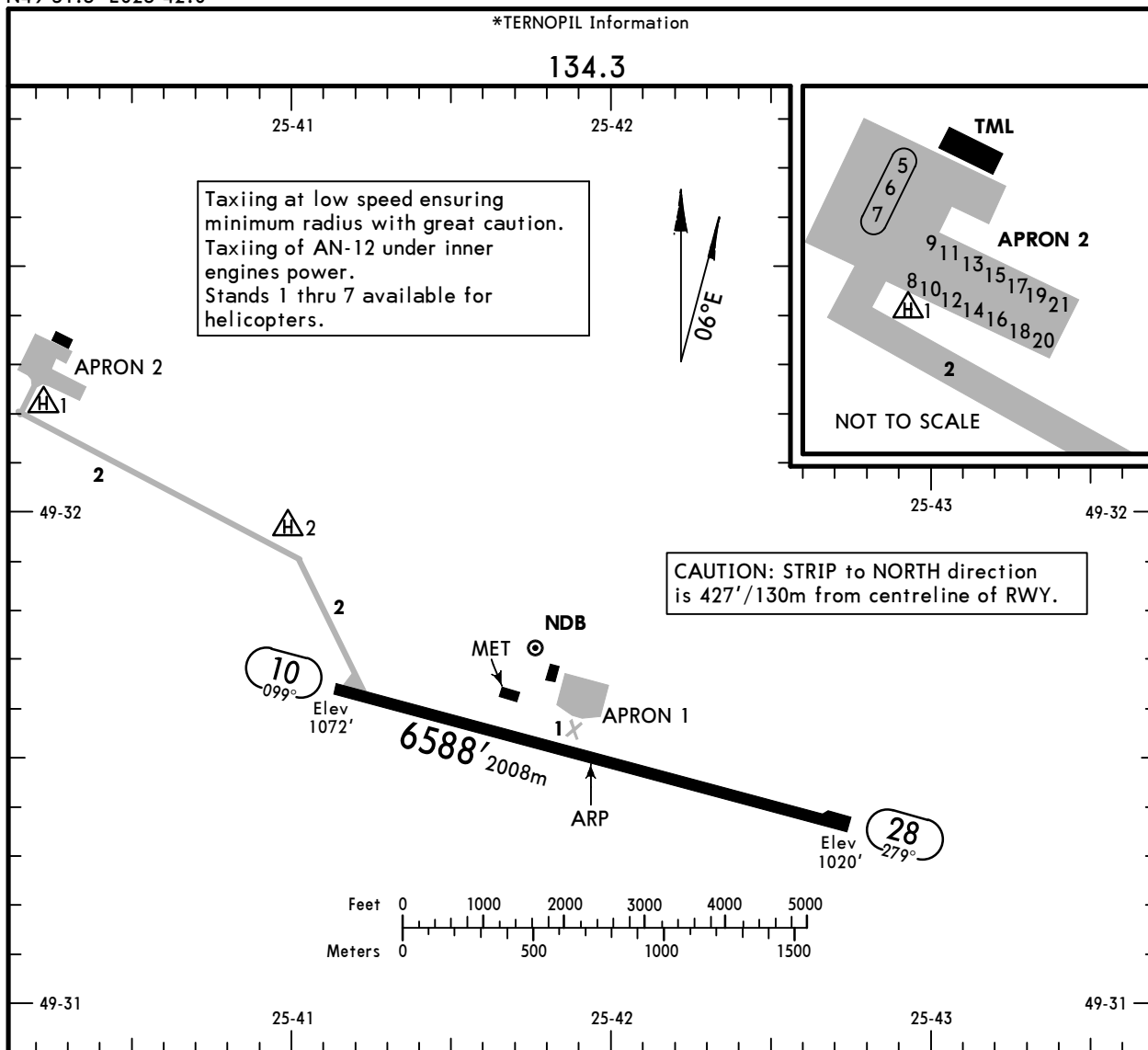
FT/METER CONVERSION	
QNH	
1970'	- 600m
4930'	- 1500m
10010'	- 3050m

RWY	ROUTING
<b>10</b>	Climb on 099° track to 1970', turn LEFT to TE NDB, then as directed by ATC.
<b>28</b>	Climb on 279° track to 1970', turn LEFT to TE NDB, then as directed by ATC.

**UKLT/TNL**  
 Apt Elev **1073'**  
 N49 31.5 E025 42.0

**JEPPESEN**  
 15 FEB 19 **(10-9)** **Eff 28 Feb**

**TERNOPII, UKRAINE**  
 TERNOPII NATL



ADDITIONAL RUNWAY INFORMATION

RWY	USABLE LENGTHS			WIDTH
	Threshold	Glide Slope	TAKE-OFF	
10 28				138' 42m

JAR-OPS	TAKE-OFF
	All Rwys
	NIL (DAY only)
A	500m
B	
C	
D	

UKLT/UKR

**JEPPESEN**  
15 FEB 19 **10-9S** Eff 28 Feb

**Standard**

**TERNOPIL, UKRAINE**  
TERNOPIL NATL

STRAIGHT-IN RWY		A	B	C	D
10	NDB ①	1780'(708') R1500m	1780'(708') R1500m	1780'(708') R3300m	1780'(708') R3300m
	NDB	1780'(708') R3500m	1780'(708') R3500m	1780'(708') R3700m	1780'(708') R3700m
28	NDB ①	1510'(490') R1500m	1510'(490') R1500m	1510'(490') R2300m	1510'(490') R2300m

① Continuous Descent Final Approach.

CIRCLE-TO-LAND	100 KT	135 KT	180 KT	205 KT
After apch to rwy 10	1780'(707')	1780'(707')	1870'(797')	2370'(1297')
After apch to rwy 28	1600'(527') V1500m ②	1780'(707') V1600m ②	1870'(797') V2400m ②	2370'(1297') V3600m

② or higher minimums of preceding straight-in approach.

**TAKE-OFF RWY 10, 28**

Adequate vis ref  
(DAY only)

A	500m
B	
C	
D	

**UKLT/TNL**  
TERNOPIL NATL

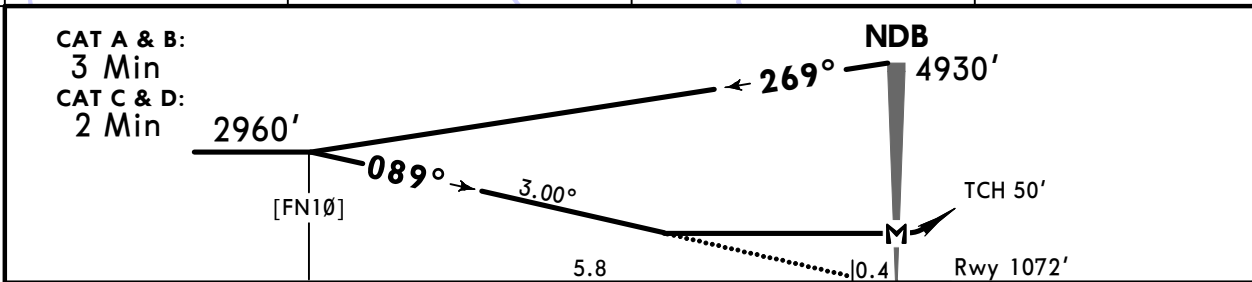
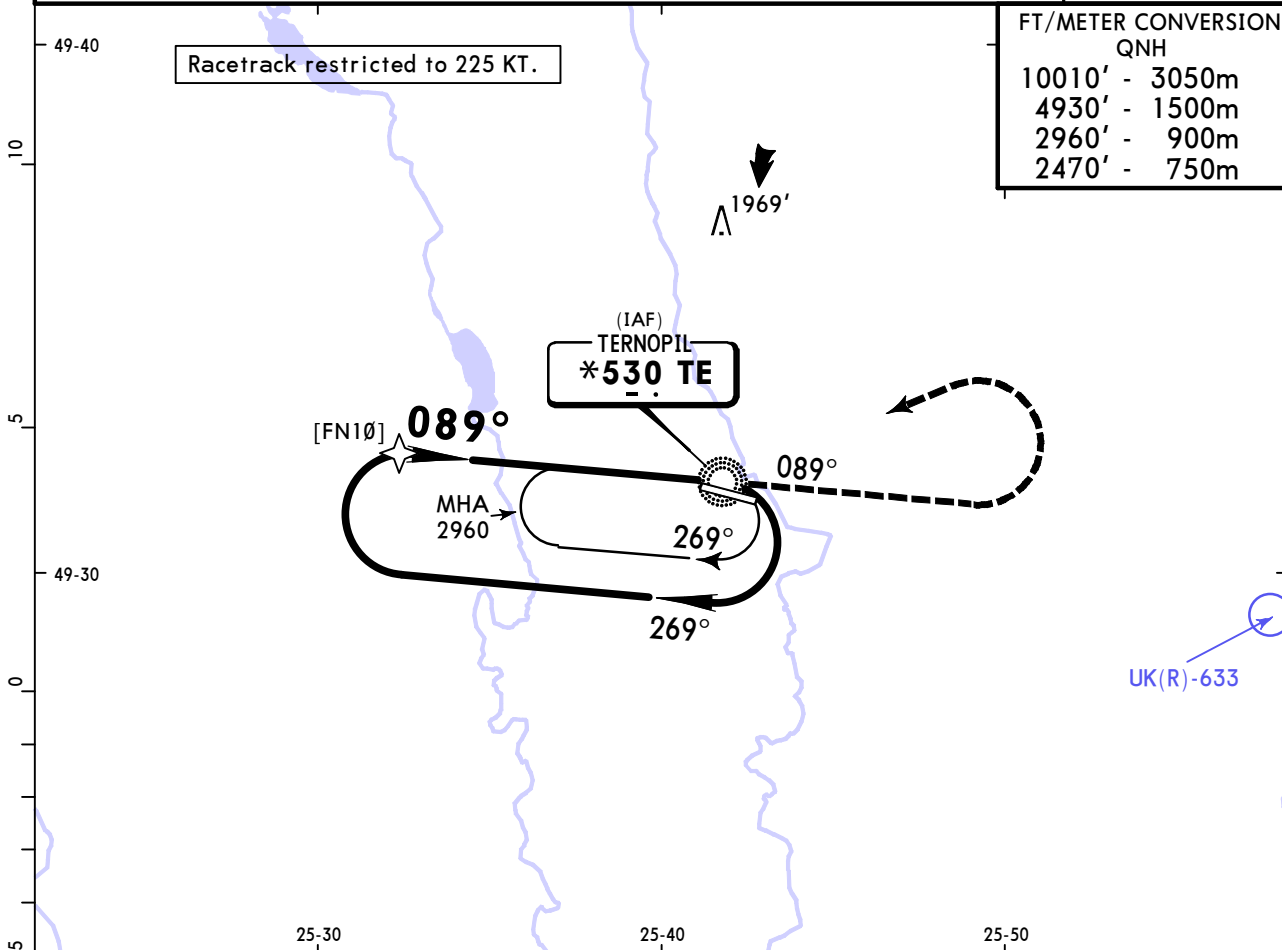
**JEPPESEN**  
15 FEB 19 **(16-1)** **Eff 28 Feb**

**TERNOPIL, UKRAINE**  
**NDB Rwy 10**

\*TERNOPIL Information

BRIEFING STRIP™

<b>134.3</b>					
NDB TE <b>*530</b>	Final Apch Crs <b>089°</b>	Minimum Alt No FAF	MDA(H) <b>1780'</b> (708')	Apt Elev 1073' Rwy 1072'	
<b>MISSED APCH: Climb on track 089° to 2470', then turn LEFT to NDB climbing to 2960', then according to chart.</b>					
Alt Set: hPa	Rwy Elev: 39 hPa	Trans level: By ATC	Trans alt: 10010'	MSA TE NDB	



Gnd speed-Kts	70	90	100	120	140	160	<b>2470'</b> ↑ on <b>089°</b>	<b>2960'</b> ← <b>LT</b>	<b>TE</b> <b>*530</b>
Descent Angle	3.00°	372	478	531	637	849			
MAP at NDB									

<b>JAR-OPS</b>		<b>STRAIGHT-IN LANDING RWY 10</b>		<b>CIRCLE-TO-LAND</b>	
		MDA(H) <b>1780'</b> (708')		Max Kts	
A		RVR 1500m		100	MDA(H) <b>1780'</b> (707') VIS 1500m
B				135	MDA(H) <b>1780'</b> (707') VIS 1600m
C				180	MDA(H) <b>1870'</b> (797') VIS 2400m
D		RVR 2000m		205	MDA(H) <b>2370'</b> (1297') VIS 3600m

PANS OPS

**UKLT/TNL**  
TERNOPIL NATL

**JEPPESEN**  
15 FEB 19 **(16-2)** **Eff 28 Feb**

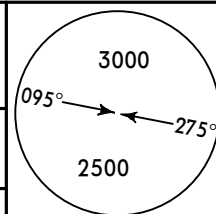
**TERNOPIL, UKRAINE**  
**NDB Rwy 28**

\*TERNOPIL Information

134.3

BRIEFING STRIP™

NDB TE <b>*530</b>	Final Apch Crs <b>286°</b>	Minimum Alt <b>D6.5</b> <b>2960'</b> (1940')	MDA(H) <b>1510'</b> (490')	Apt Elev 1073' Rwy 1020'
--------------------------	----------------------------------	--	-------------------------------	-----------------------------



**MISSED APCH:** Climb on track 286° to 2470', then turn LEFT to NDB climbing to 2960', then according to chart.

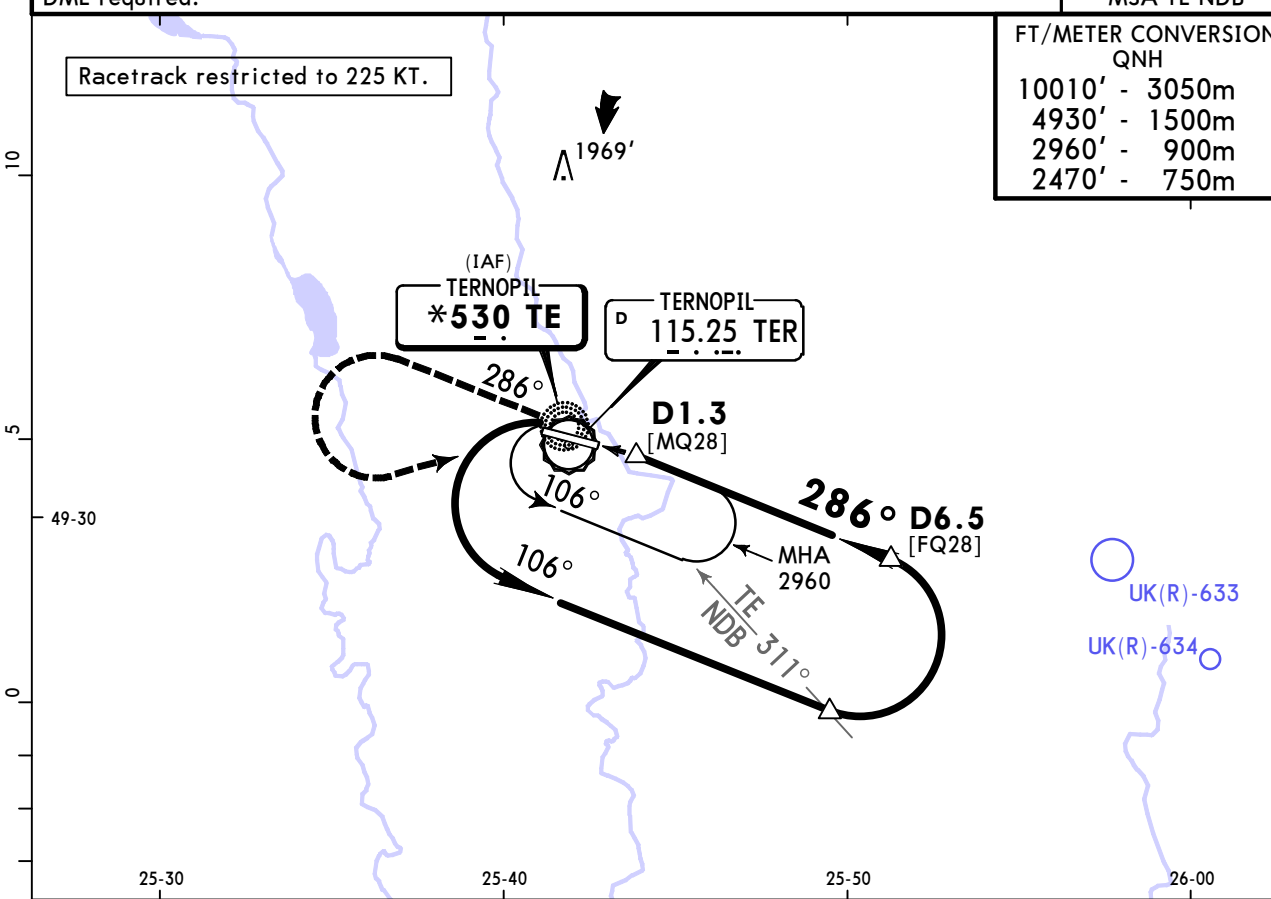
Alt Set: hPa    Rwy Elev: 37 hPa    Trans level: By ATC    Trans alt: 10010'  
DME required.

MSA TE NDB

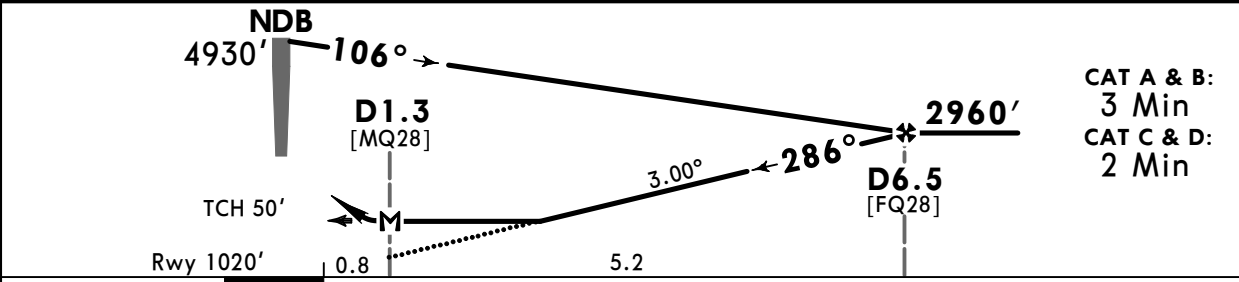
FT/METER CONVERSION  
QNH

10010'	-	3050m
4930'	-	1500m
2960'	-	900m
2470'	-	750m

Racetrack restricted to 225 KT.



TER DME	2.7	3.8	4.9	5.9
ALTITUDE	1760'	2110'	2450'	2790'



CAT A & B:  
3 Min  
CAT C & D:  
2 Min

Gnd speed-Kts	70	90	100	120	140	160	2470' on 286°	2960' LT	TE *530
Descent Angle	3.00°	372	478	531	637	743			

<b>JAR-OPS</b>		<b>STRAIGHT-IN LANDING RWY 28</b>		<b>CIRCLE-TO-LAND</b>	
MDA(H) <b>1510'</b> (490')		RVR 1500m		Max Kts	MDA(H) VIS
A	RVR 2000m		100	<b>1600'</b> (527')	1500m
B	RVR 2000m		135	<b>1780'</b> (707')	1600m
C	RVR 2000m		180	<b>1870'</b> (797')	2400m
D	RVR 2000m		205	<b>2370'</b> (1297')	3600m

PANS OPS

## Chart changes since cycle 08-2019

ADD = added chart, REV = revised chart, DEL = deleted chart.

ACT	PROCEDURE IDENT	INDEX	REV DATE	EFF DATE
-----	-----------------	-------	----------	----------

**TERNOPIIL, (TERNOPIIL NATL - UKLT)**

## TERMINAL CHART CHANGE NOTICES

No Chart Change Notices for Airport UKLT