

List of pages in this Trip Kit

Trip Kit Index

Airport Information For UKLU

Terminal Charts For UKLU

Revision Letter For Cycle 05-2025

Change Notices

Notebook

General Information

Location: UZHOROD UKR
ICAO/IATA: UKLU / UDJ
Lat/Long: N48° 38.07', E022° 15.78'
Elevation: 384 ft

Airport Use: Public
Daylight Savings: Observed
UTC Conversion: -2:00 = UTC
Magnetic Variation: 6.0° E

Fuel Types: Jet A-1
Customs: Yes
Airport Type: IFR
Landing Fee: Yes
Control Tower: Yes
Jet Start Unit: No
LLWS Alert: No
Beacon: No

Sunrise: 0241 Z
Sunset: 1814 Z

Runway Information

Runway: 10
Length x Width: 6686 ft x 131 ft
Surface Type: asphalt
TDZ-Elev: 373 ft
Lighting: Edge

Runway: 28
Length x Width: 6686 ft x 131 ft
Surface Type: asphalt
TDZ-Elev: 377 ft
Lighting: Edge
Displaced Threshold: 2093 ft

Communication Information

Uzhhorod Tower: 126.900
Lviv Information: 130.700 Flight Info Service RCO

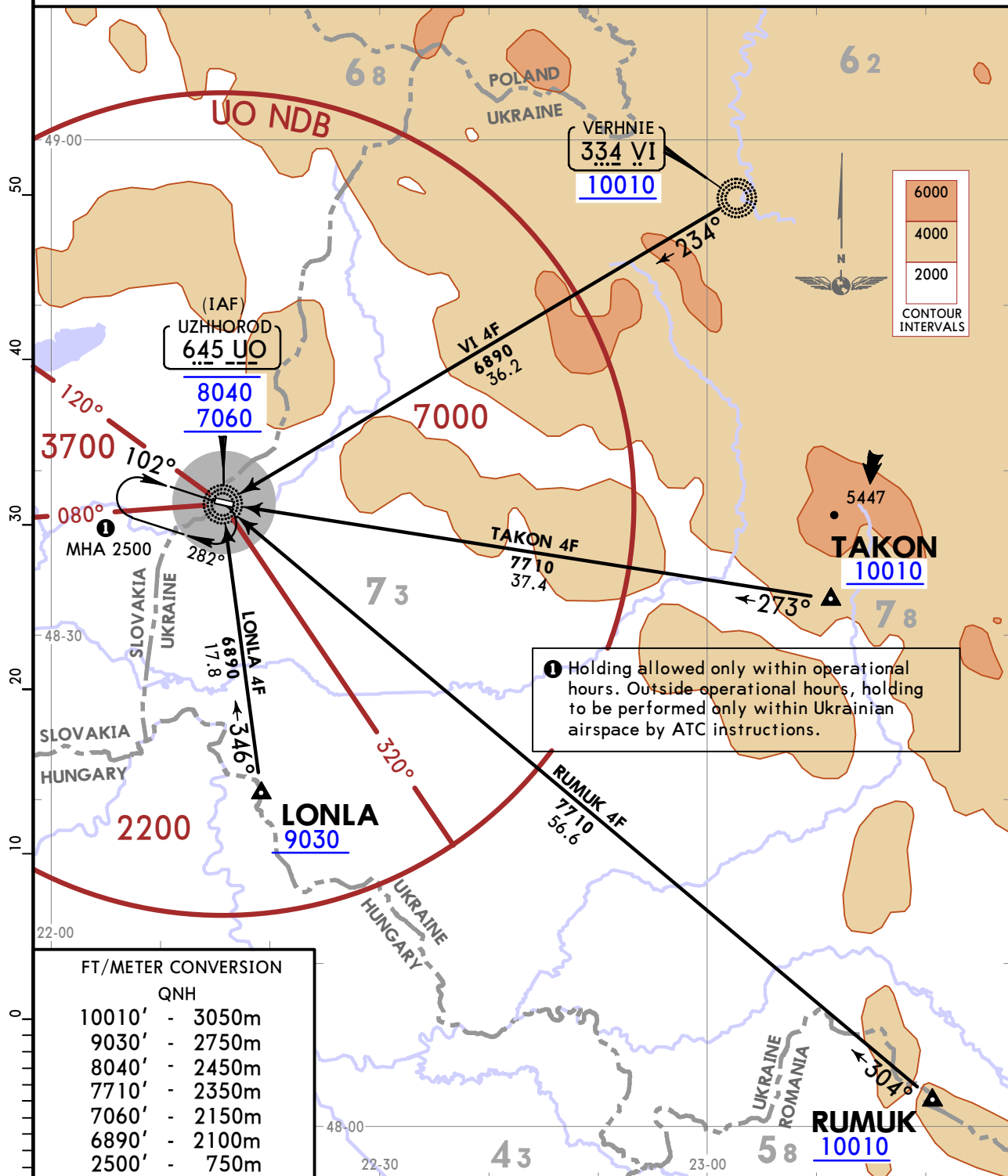
UKLU/UDJ UZHHOROD INTL

JEPPESEN
3 SEP 21 10-2 Eff 9 Sep

UZHHOROD, UKRAINE
STAR

Apt Elev 384	Alt Set: hPa (MM on request) Trans level: By ATC
------------------------	---

LONLA 4F [LONL4F] RUMUK 4F [RUMU4F] TAKON 4F [TAKO4F] VERHNE 4F (VI 4F) [VI4F] ARRIVALS (RWY 10)

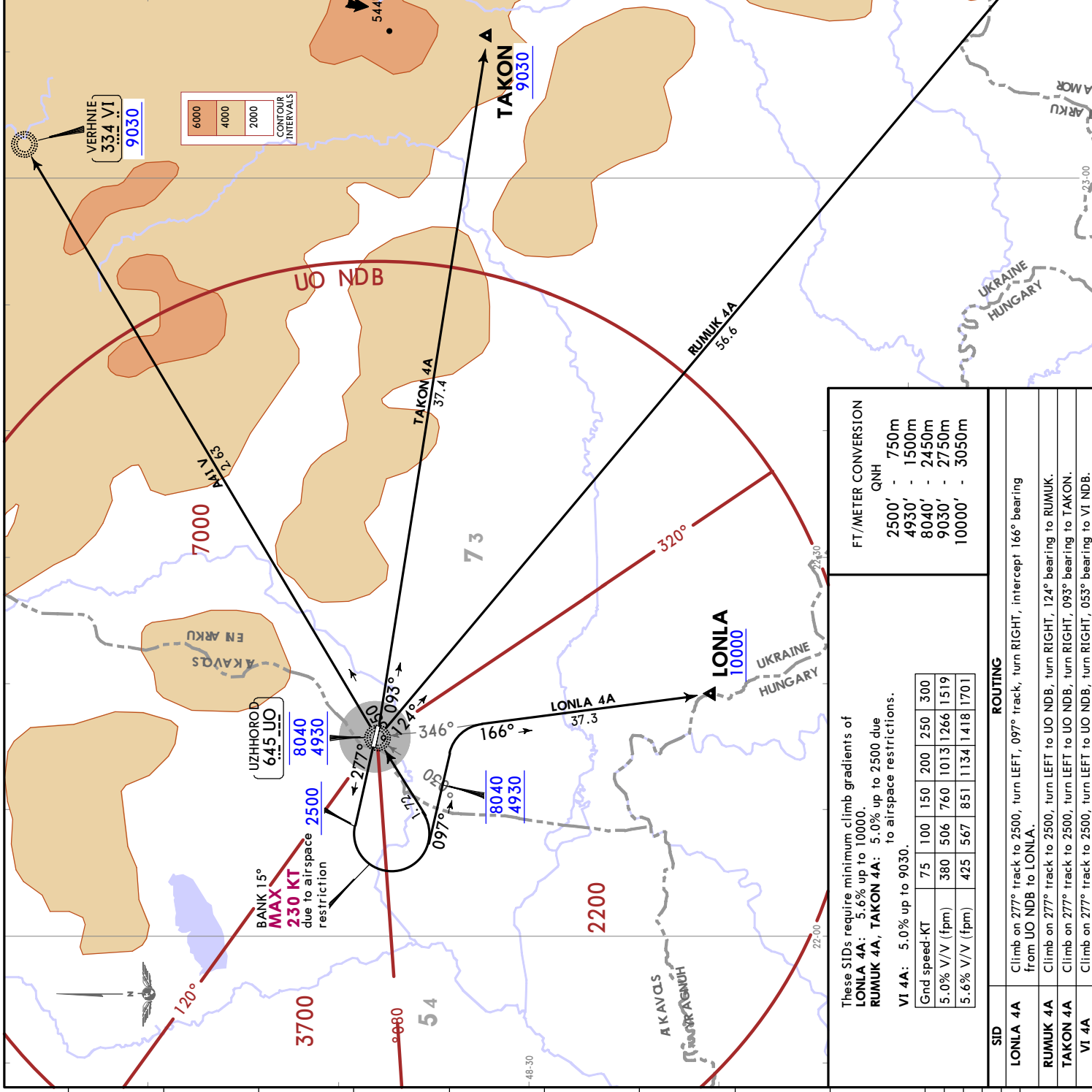


FT/METER CONVERSION	
QNH	
10010'	- 3050m
9030'	- 2750m
8040'	- 2450m
7710'	- 2350m
7060'	- 2150m
6890'	- 2100m
2500'	- 750m

STAR	ROUTING
LONLA 4F	On 346° bearing to UO NDB, then according to approach chart.
RUMUK 4F	On 304° bearing to UO NDB, then according to approach chart.
TAKON 4F	On 273° bearing to UO NDB, then according to approach chart.
VI 4F	On 234° bearing to UO NDB, then according to approach chart.

JEPPESEN **UZHGOROD, UKRAINE**
 3 SEP 21 10-3 Eff 9 Sep **SID**

Trans alt: 10000
 If unable to comply SID procedures
 advise ATC.
LONLA 4A
RUMUK 4A [RUMU4A]
TAKON 4A [TAKO4A]
VERHNE 4A (VI 4A) [V14A]
DEPARTURES
(RWY 28)



These SIDs require minimum climb gradients of
LONLA 4A: 5.6% up to 10000.
RUMUK 4A, TAKON 4A: 5.0% up to 2500 due to airspace restrictions.
VI 4A: 5.0% up to 9030.

Gnd speed-KT	75	100	150	200	250	300
5.0% V/V (fpm)	380	506	760	1013	1266	1519
5.6% V/V (fpm)	425	567	851	1134	1418	1701

FT/METER CONVERSION

QNH	2500'	750m
	4930'	1500m
	8040'	2450m
	9030'	2750m
	10000'	3050m

SID	ROUTING
LONLA 4A	Climb on 277° track to 2500, turn LEFT, 097° track, turn RIGHT, intercept 166° bearing from UO NDB to LONLA.
RUMUK 4A	Climb on 277° track to 2500, turn LEFT to UO NDB, turn RIGHT, 124° bearing to RUMUK.
TAKON 4A	Climb on 277° track to 2500, turn LEFT to UO NDB, turn RIGHT, 093° bearing to TAKON.
VI 4A	Climb on 277° track to 2500, turn LEFT to UO NDB, turn RIGHT, 053° bearing to VI NDB.

UKLU/UDJ

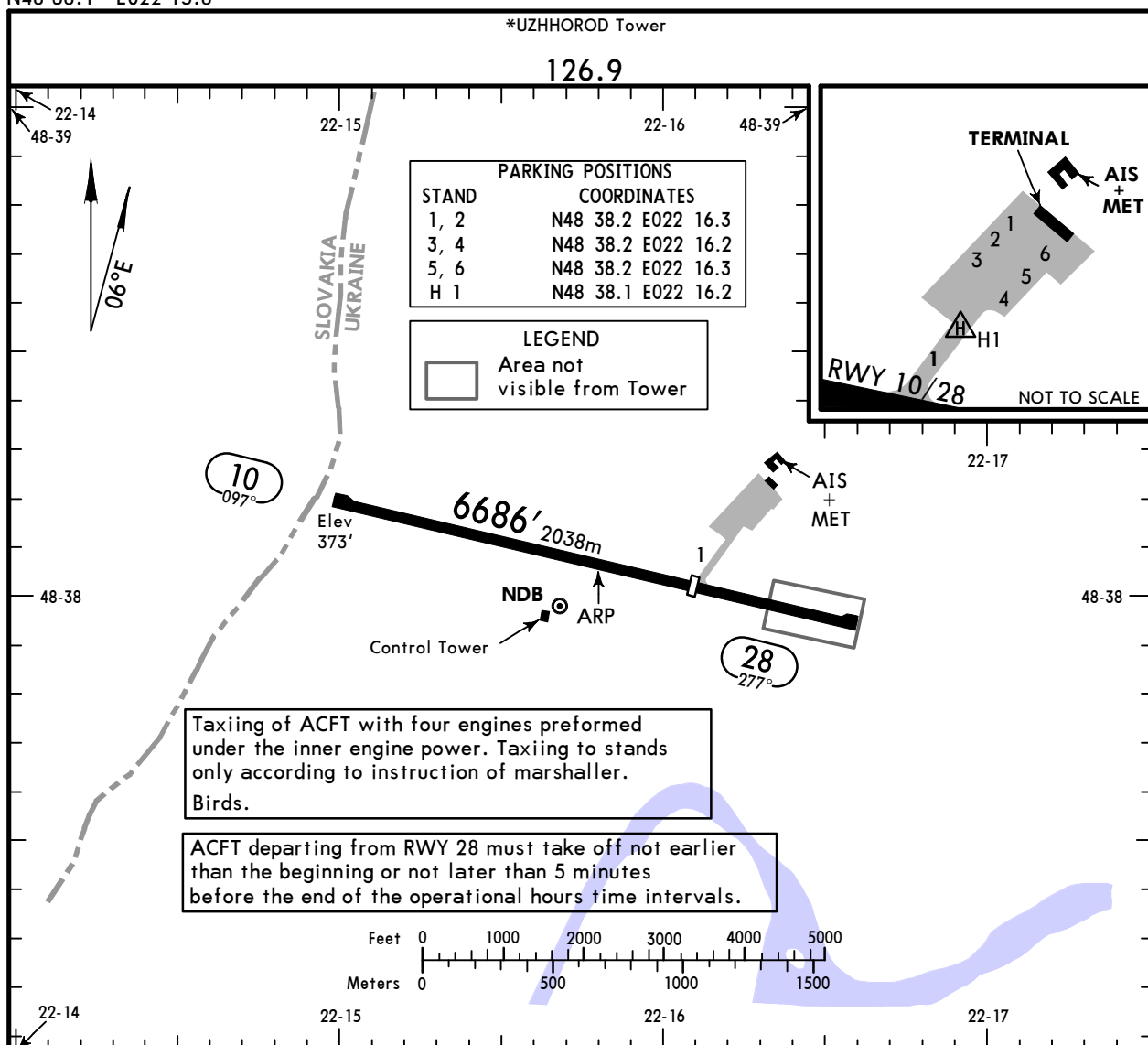
Apt Elev **384'**
N48 38.1 E022 15.8



19 NOV 21 **(10-9) Eff 2 Dec**

UZHGOROD, UKRAINE

UZHGOROD INTL



ADDITIONAL RUNWAY INFORMATION

RWY	Landing	USABLE LENGTHS		TAKE-OFF	WIDTH
		Threshold	Glide Slope		
10 28	RL (60m)	② 4593'	③ 1400m	④	131' 40m

- ① RWY 10 no available for departure.
RWY 28 available for landing during daytime only.
- ② LDA 6467' (1971m)
- ③ LDA 4364' (1330m)
- ④ TAKE-OFF RUN AVAILABLE
From rwy head 6457' (1968m)
twy 1 int 4364' (1330m)

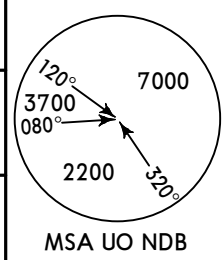
Std TAKE-OFF		
Rwy 28		
RCLM	Adequate Vis Ref	
DAY	DAY	NIGHT
R400m	R/V500m	NA

UKLU/UDJ
UZHGOROD INTL

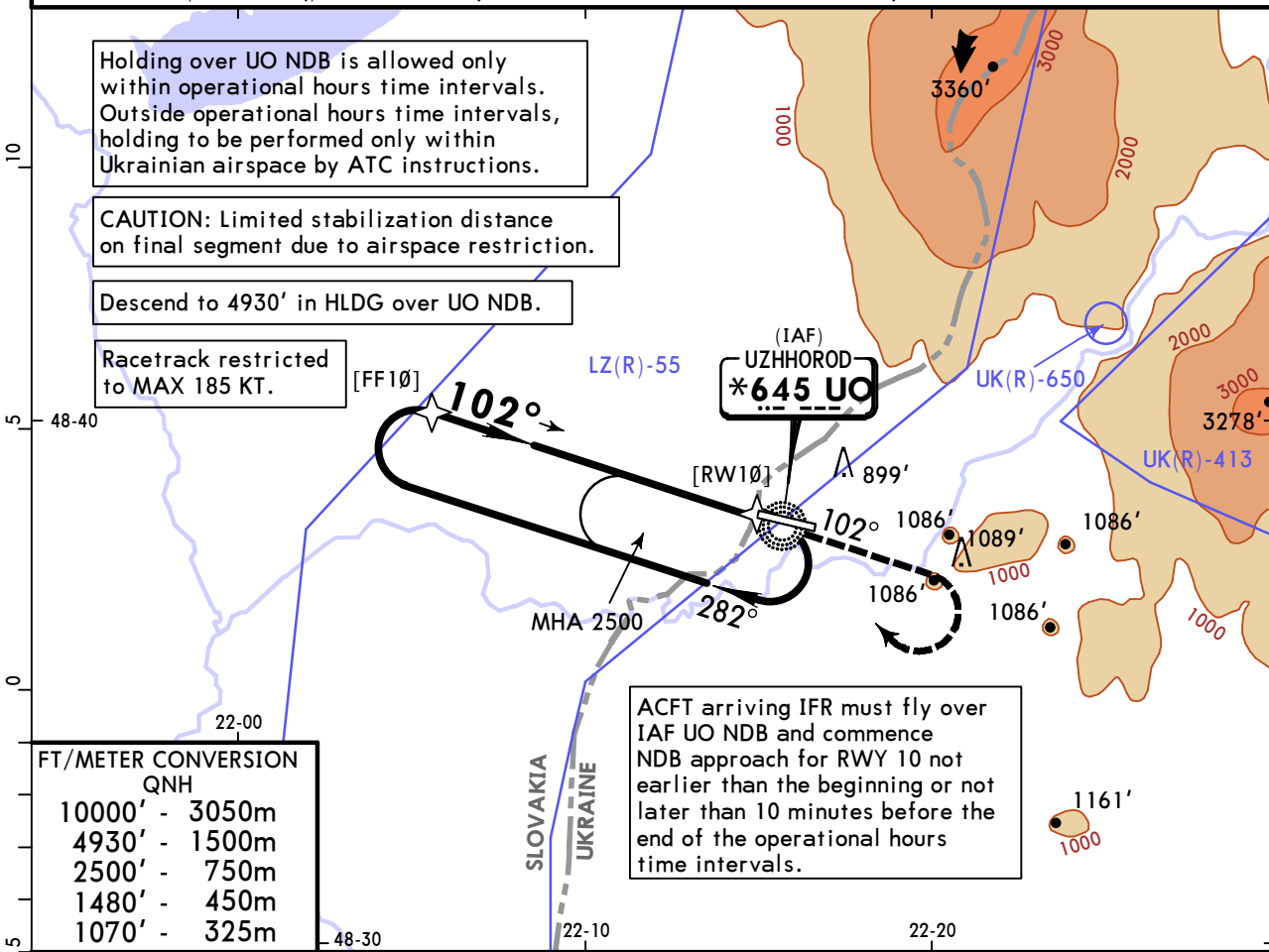
JEPPESEN
10 DEC 21 **(16-2)**

UZHGOROD, UKRAINE
NDB Y Rwy 10

*UZHGOROD Tower				
126.9				
NDB UO *645	Final Apch Crs 102°	No FAF	DA/MDA(H) 1070' (697')	Apt Elev 384' Rwy 373'
MISSED APCH: Climb on track 102° to 1480', then turn RIGHT to NDB climbing 2500', then according to chart.				



Alt Set: hPa (MM on req) Rwy Elev: 14 hPa Trans level: By ATC Trans alt: 10000'



Holding over UO NDB is allowed only within operational hours time intervals. Outside operational hours time intervals, holding to be performed only within Ukrainian airspace by ATC instructions.

CAUTION: Limited stabilization distance on final segment due to airspace restriction.

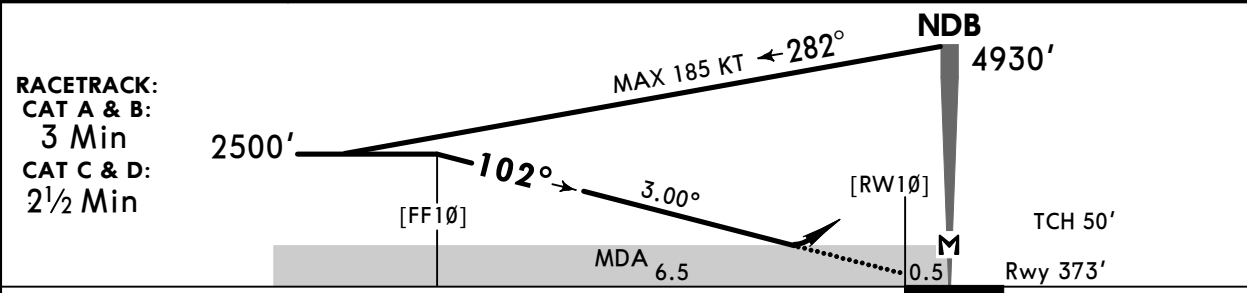
Descend to 4930' in HLDG over UO NDB.

Racetrack restricted to MAX 185 KT.

ACFT arriving IFR must fly over IAF UO NDB and commence NDB approach for RWY 10 not earlier than the beginning or not later than 10 minutes before the end of the operational hours time intervals.

FT/METER CONVERSION
QNH

10000'	-	3050m
4930'	-	1500m
2500'	-	750m
1480'	-	450m
1070'	-	325m



Gnd speed-Kts	70	90	100	120	140	160	1480' ↑ on 102°
Descent Angle 3.00°	372	478	531	637	743	849	
MAP at NDB							

Timing not authorized for defining the MAP.

PANS OPS	Std STRAIGHT-IN LANDING		CIRCLE-TO-LAND	
	CDFA DA/MDA(H) 1070' (697')		Max Kts	
	A	R1500m	A	NOT AUTHORIZED
	B		B	
C	R2400m	C		
D		D		

DA/MDA(H) in lieu of MDA(H) depends on operator policy.

Chart changes since cycle 04-2025

ADD = added chart, REV = revised chart, DEL = deleted chart.

ACT	PROCEDURE IDENT	INDEX	REV DATE	EFF DATE
-----	-----------------	-------	----------	----------

UZHHOROD, (UZHHOROD INTL - UKLU)

TERMINAL CHART CHANGE NOTICES

No Chart Change Notices for Airport UKLU