

List of pages in this Trip Kit

Trip Kit Index

Airport Information For UTFA

Terminal Charts For UTFA

Revision Letter For Cycle 05-2025

Change Notices

Notebook

General Information

Location: Andizhan Uzb
Latitude: N40° 43.62'
Longitude: E072° 17.55'
Elevation: 1558 ft
Magnetic Variation: 5.3°E

Fuel Types: Jet A-1
Customs: Restricted
Airport Type: IFR
Landing Fee: Yes
Control Tower: No
Jet Start Unit: No
LLWS Alert: No
Beacon: No

Sunrise: 2359 Z
Sunset: 1435 Z

UTFA/AZN ANDIZHAN

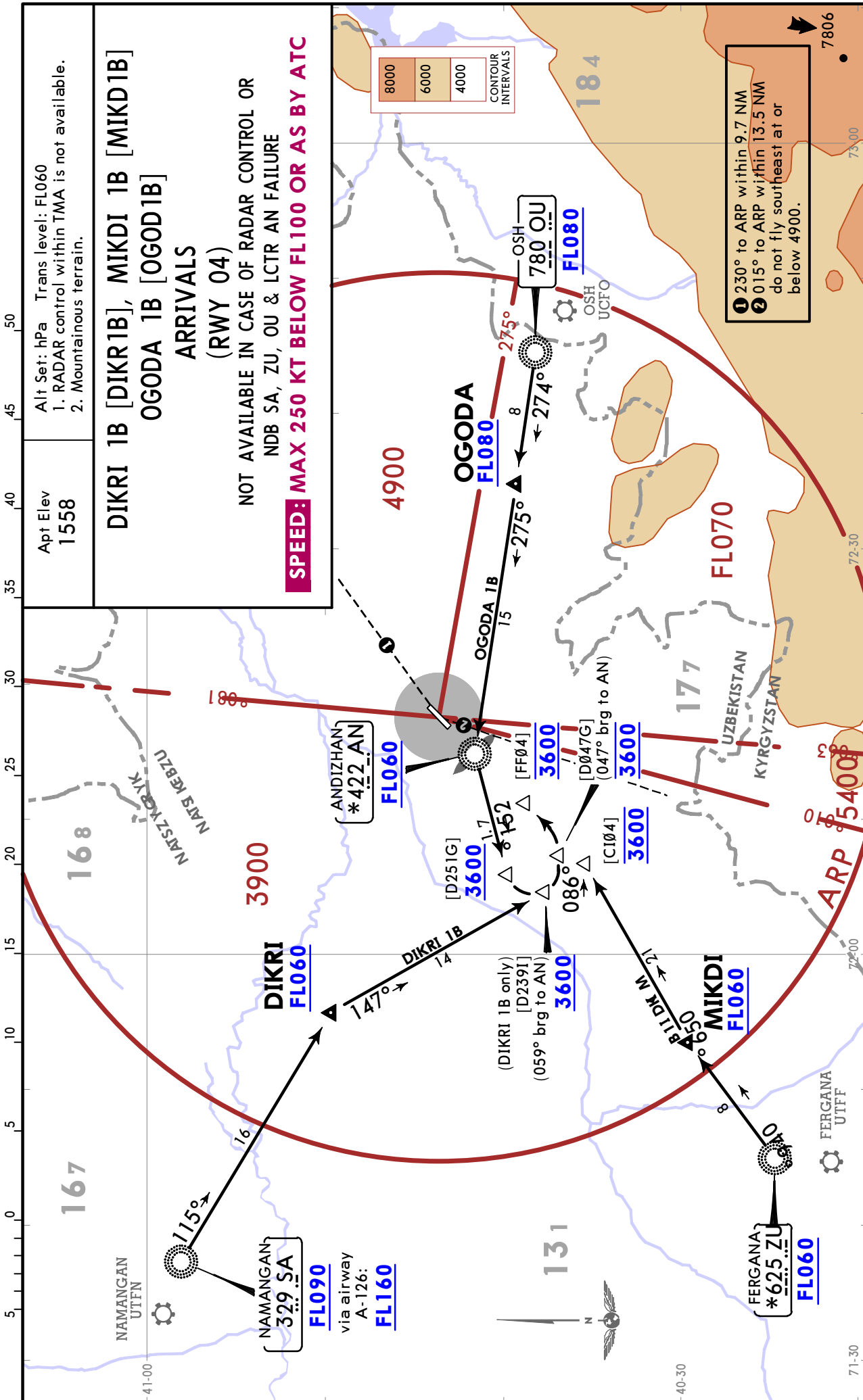


ANDIZHAN, UZBEKISTAN

24 MAY 24

10-2

STAR



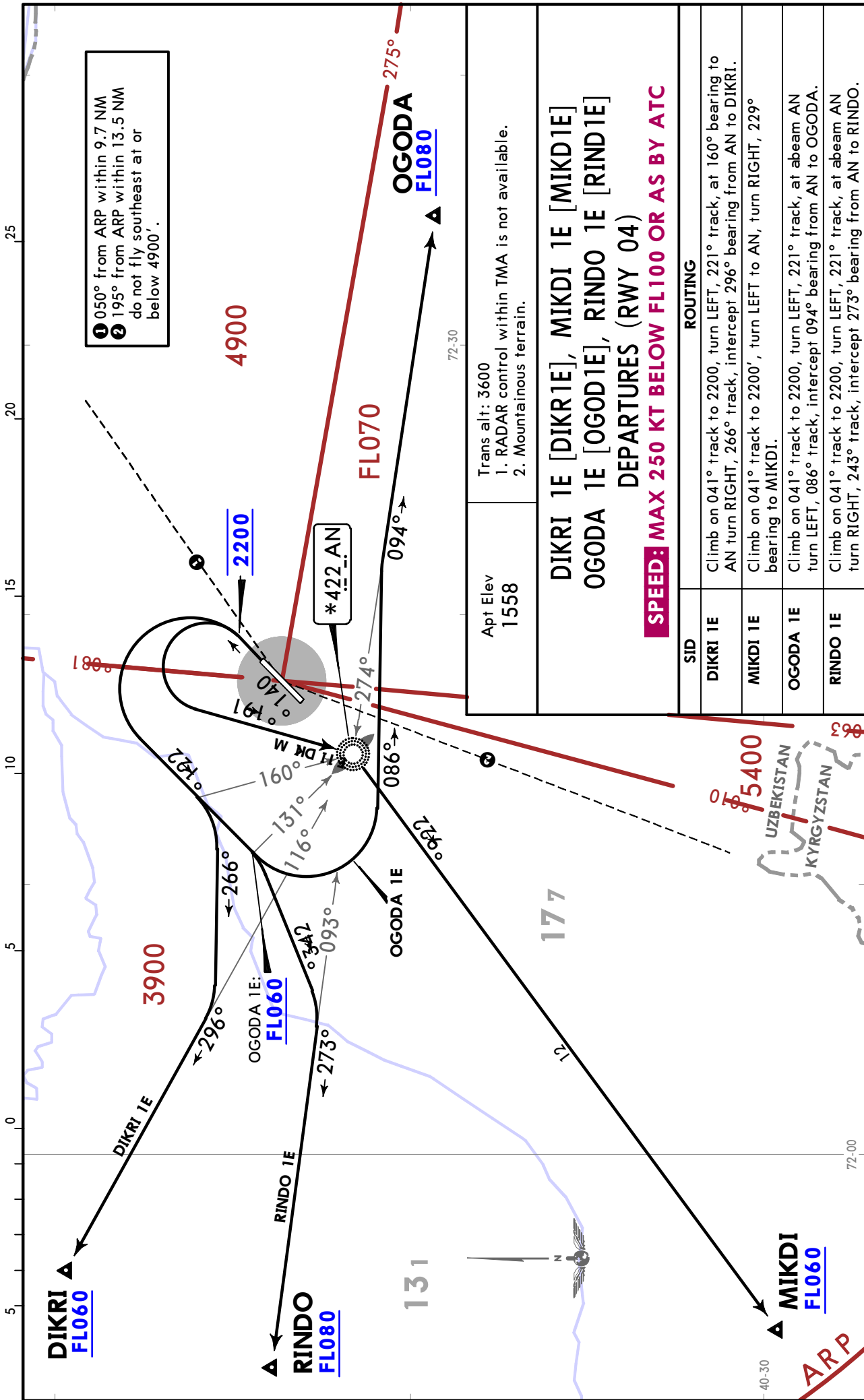
UTFA/AZN ANDIZHAN

24 MAY 24

10-3

JEPPESSEN ANDIZHAN, UZBEKISTAN

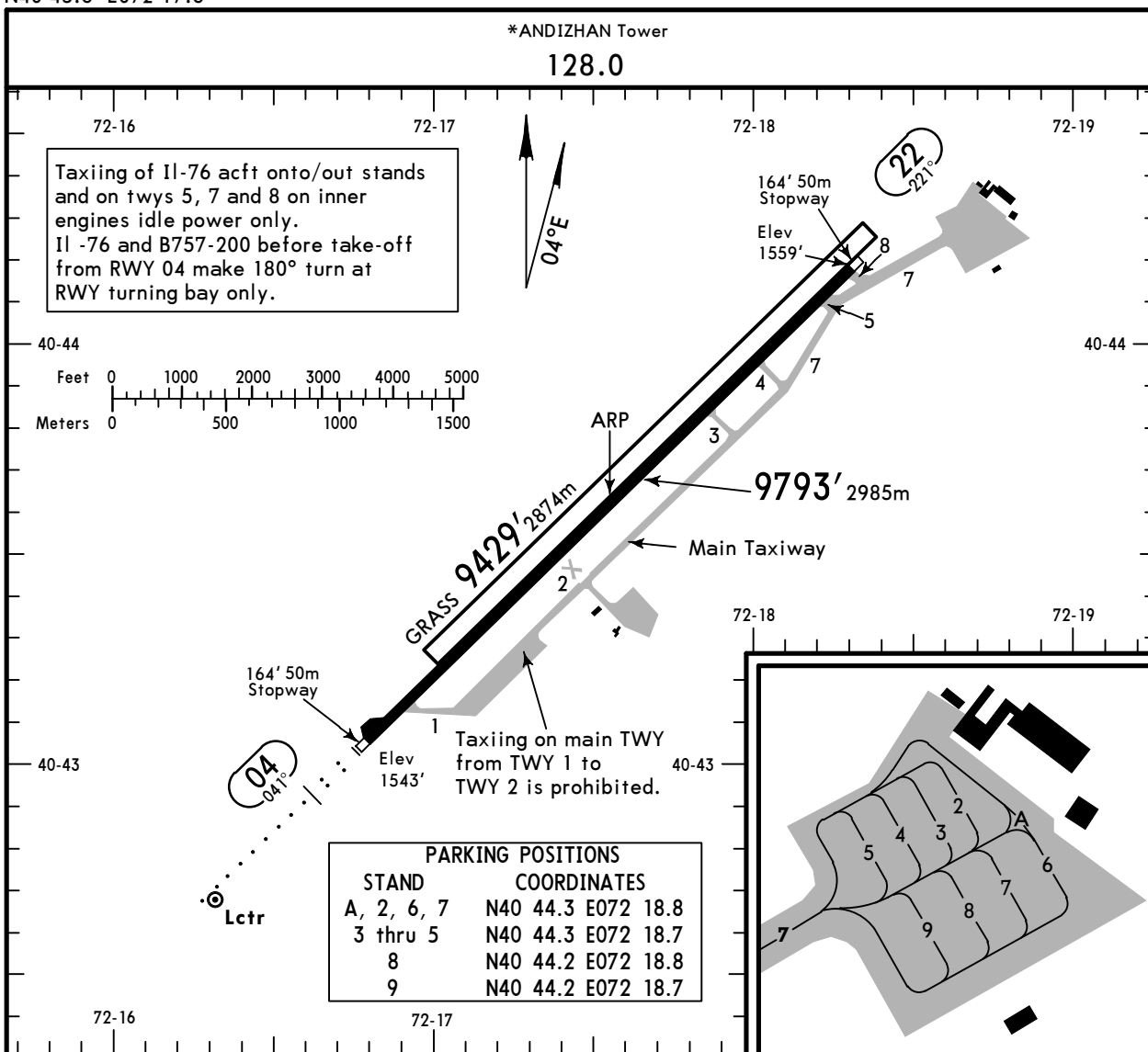
SID



Apt Elev 1558		Trans alt: 3600 1. RADAR control within TMA is not available. 2. Mountainous terrain.	
<p>DIKRI 1E [DIKRI1E], MIKDI 1E [MIKDI1E] OGODA 1E [OGOD1E], RINDO 1E [RIND1E] DEPARTURES (RWY 04) SPEED: MAX 250 KT BELOW FL100 OR AS BY ATC</p>			
ROUTING			
SID	ROUTING		
DIKRI 1E	Climb on 041° track to 2200, turn LEFT, 221° track, at 160° bearing to AN turn RIGHT, 266° track, intercept 296° bearing from AN to DIKRI.		
MIKDI 1E	Climb on 041° track to 2200', turn LEFT to AN, turn RIGHT, 229° bearing to MIKDI.		
OGODA 1E	Climb on 041° track to 2200, turn LEFT, 221° track, at abeam AN turn LEFT, 086° track, intercept 094° bearing from AN to OGODA.		
RINDO 1E	Climb on 041° track to 2200, turn LEFT, 221° track, at abeam AN turn RIGHT, 243° track, intercept 273° bearing from AN to RINDO.		

UTFA/AZN
 Apt Elev **1558'**
 N40 43.6 E072 17.6

JEPPESEN ANDIZHAN, UZBEKISTAN
 22 JAN 21 **(10-9) Eff 28 Jan**
ANDIZHAN



ADDITIONAL RUNWAY INFORMATION

RWY		USABLE LENGTHS			WIDTH
		Threshold	Landing Beyond Glide Slope	TAKE-OFF	
04	RL (75m) MIALS		8882' 2707m	①	144' 44m
22	RL (75m)				
04	Grass runway				295' 90m

① TAKE-OFF RUN AVAILABLE

<u>RWY 04:</u> From rwy head	9793' (2985m)	<u>RWY 22:</u> From rwy head	9793' (2985m)
twy 1 int	8727' (2660m)	twy 5 int	8727' (2660m)
twy 2 int	6542' (1994m)	twy 4 int	7546' (2300m)
		twy 3 int	6194' (1888m)

State		TAKE-OFF			
RL & RCLM		RL or RCLM	Adequate Vis Ref		
DAY	NIGHT	DAY	DAY	NIGHT	
R300m		R300m	R/V500m	NA	

UTFA/AZN



Standard

28 APR 17

10-9S

ANDIZHAN, UZBEKISTAN

STRAIGHT-IN RWY		A	B	C	D
04	ILS	1770' (227') 1000m	1780' (237') 1000m	1790' (247') 1000m	1800' (257') 1100m
	ALS out	1300m	1300m	1400m	1500m
	LOC	NOT AUTH	NOT AUTH	NOT AUTH	NOT AUTH
	2 NDB ①	1900' (357') 1800m	1900' (357') 1800m	1900' (357') 2800m	1900' (357') 2800m
22	NDB ①	2400' (841') ceiling 1500' - 5000m	2400' (841') ceiling 1500' - 5000m	2400' (841') ceiling 1500' - 5000m	2400' (841') ceiling 1500' - 5000m

① Continuous Descent Final Approach.

TAKE-OFF RWY 04, 22

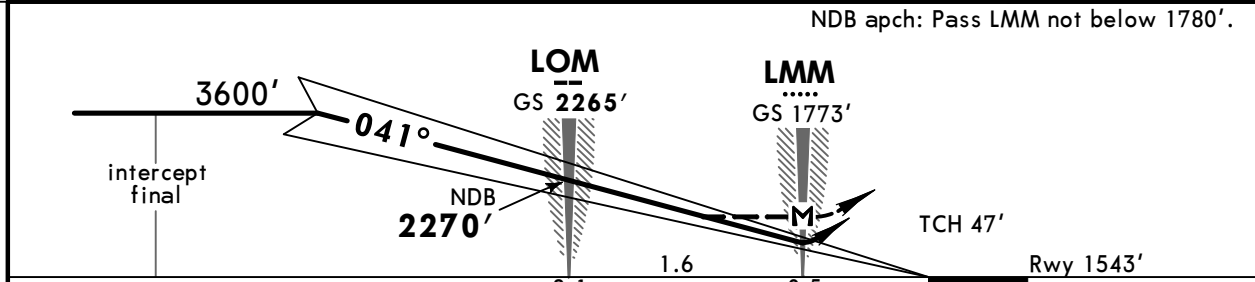
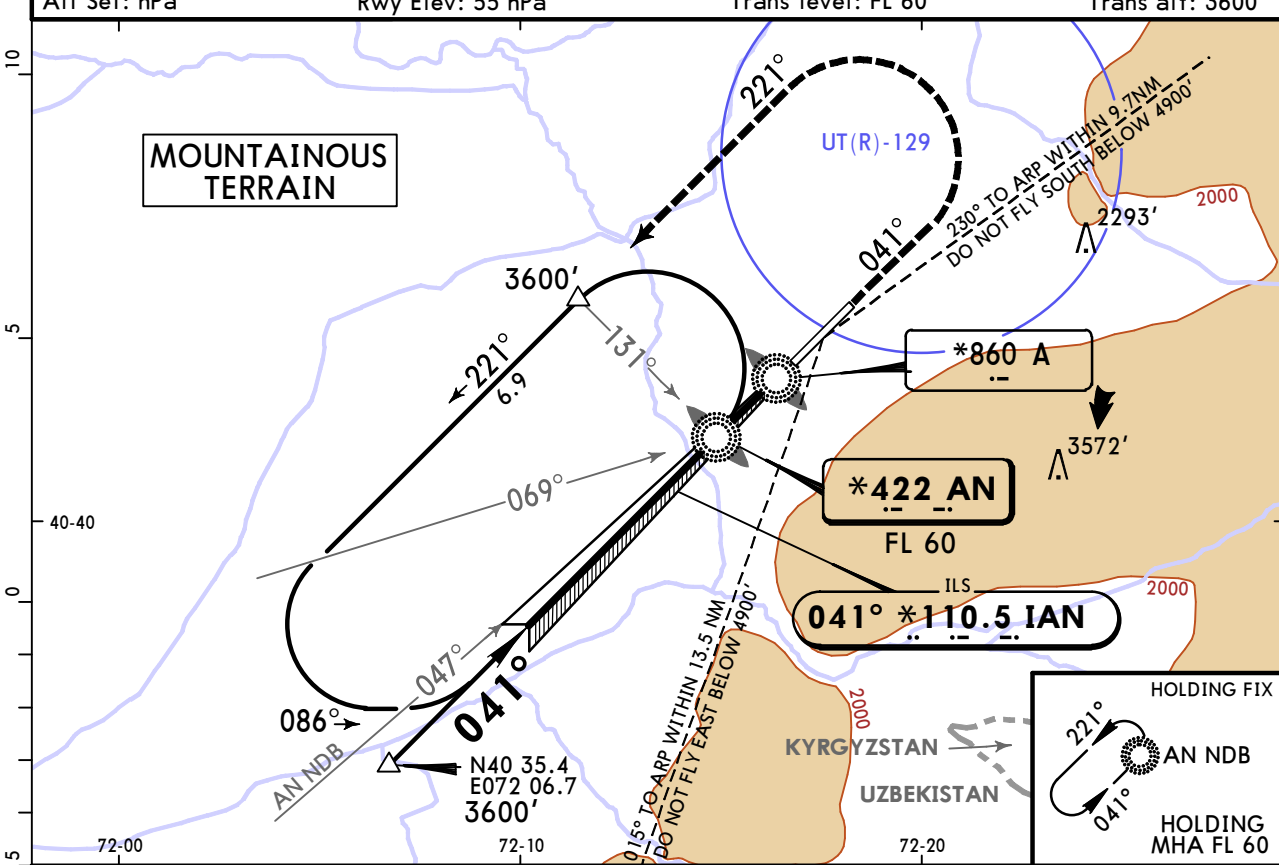
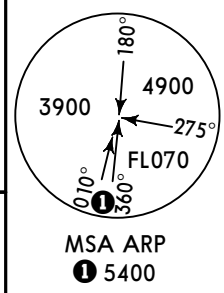
Low Visibility Take-off			
	Day: RL & RCLM Night: RL	Day: RL or RCLM Night: RL	Adequate vis ref (Day only)
A	RVR 300m	400m	500m
B			
C			
D			

UTFA/AZN
ANDIZHAN



ANDIZHAN, UZBEKISTAN
ILS or 2 NDB Rwy 04

*ANDIZHAN Tower 128.0					
BRIEFING STRIP™	LOC IAN *110.5	Final Apch Crs 041°	LOM 2265' (722')	ILS DA(H) Refer to Minimums	Apt Elev 1558' Rwy 1543'
	NDB AN *422		LOM MANDATORY 2270' (727')	NDB MDA(H) 1900' (357')	
<p>MISSED APCH: Climb on 041° to 2200', then turn LEFT onto 221° climbing to 3600', then according to chart, or as directed.</p>					
Alt Set: hPa		Rwy Elev: 55 hPa		Trans level: FL 60	
				Trans alt: 3600'	



Gnd speed-Kts	70	90	100	120	140	160	MIALS	2200'	on 041°	221°	3600'
ILS GS or	3.00°	372	478	531	637	743	849	↑		←	↑
NDB Desc Angle	3.15°	390	502	557	669	780	892				
MAP at LMM											

PANS OPS	State				STRAIGHT-IN LANDING			
	ILS				NDB			
	DA(H) A: 1770' (227') C: 1790' (247') B: 1780' (237') D: 1800' (257')				MDA(H) 1900' (357')			
	FULL		ALS out				ALS out	
	A	R/V900m	R/V1300m		R/V1800m			
B	R/V1000m	R/V1400m		R/V2800m				
C	R/V1100m	R/V1500m						
D	R/V1100m	R/V1500m						

Chart changes since cycle 04-2025

ADD = added chart, REV = revised chart, DEL = deleted chart.

ACT	PROCEDURE IDENT	INDEX	REV DATE	EFF DATE
	ANDIZHAN, (ANDIZHAN - UTFA)			

TERMINAL CHART CHANGE NOTICES

No Chart Change Notices for Airport UTFA