

List of pages in this Trip Kit

Trip Kit Index
Airport Information For UTFN
Terminal Charts For UTFN
Revision Letter For Cycle 05-2025
Change Notices
Notebook

General Information

Location: NAMANGAN UZB
ICAO/IATA: UTFN / NMA
Lat/Long: N40° 59.09', E071° 33.41'
Elevation: 1705 ft

Airport Use: Public
Daylight Savings: Not Observed
UTC Conversion: -5:00 = UTC
Magnetic Variation: 5.0° E

Fuel Types: Jet A-1
Repair Types: Minor Airframe
Customs: Yes
Airport Type: IFR
Landing Fee: Yes
Control Tower: Yes
Jet Start Unit: No
LLWS Alert: No
Beacon: No

Sunrise: 0002 Z
Sunset: 1439 Z

Runway Information

Runway: 10
Length x Width: 10745 ft x 148 ft
Surface Type: asphalt
TDZ-Elev: 1703 ft
Lighting: Edge
Stopway: 197 ft

Runway: 28
Length x Width: 10745 ft x 148 ft
Surface Type: asphalt
TDZ-Elev: 1534 ft
Lighting: Edge, ALS
Stopway: 197 ft

Communication Information

Namangan Tower: 120.700
Namangan Approach: 125.600
Namangan Transit Operations: 132.300 Non-English

NAMANGAN, UZBEKISTAN
STAR

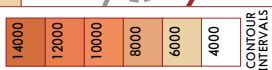
Apt Elev
1705

Alt Set: hPa Trans level: FL080
Mountainous terrain.

ABDOK 5X [ABD05X]
ATLUD 5X [ATLU5X]
DIPAX 5X [DIPA5X]
IRGUL 5X [IRGU5X]

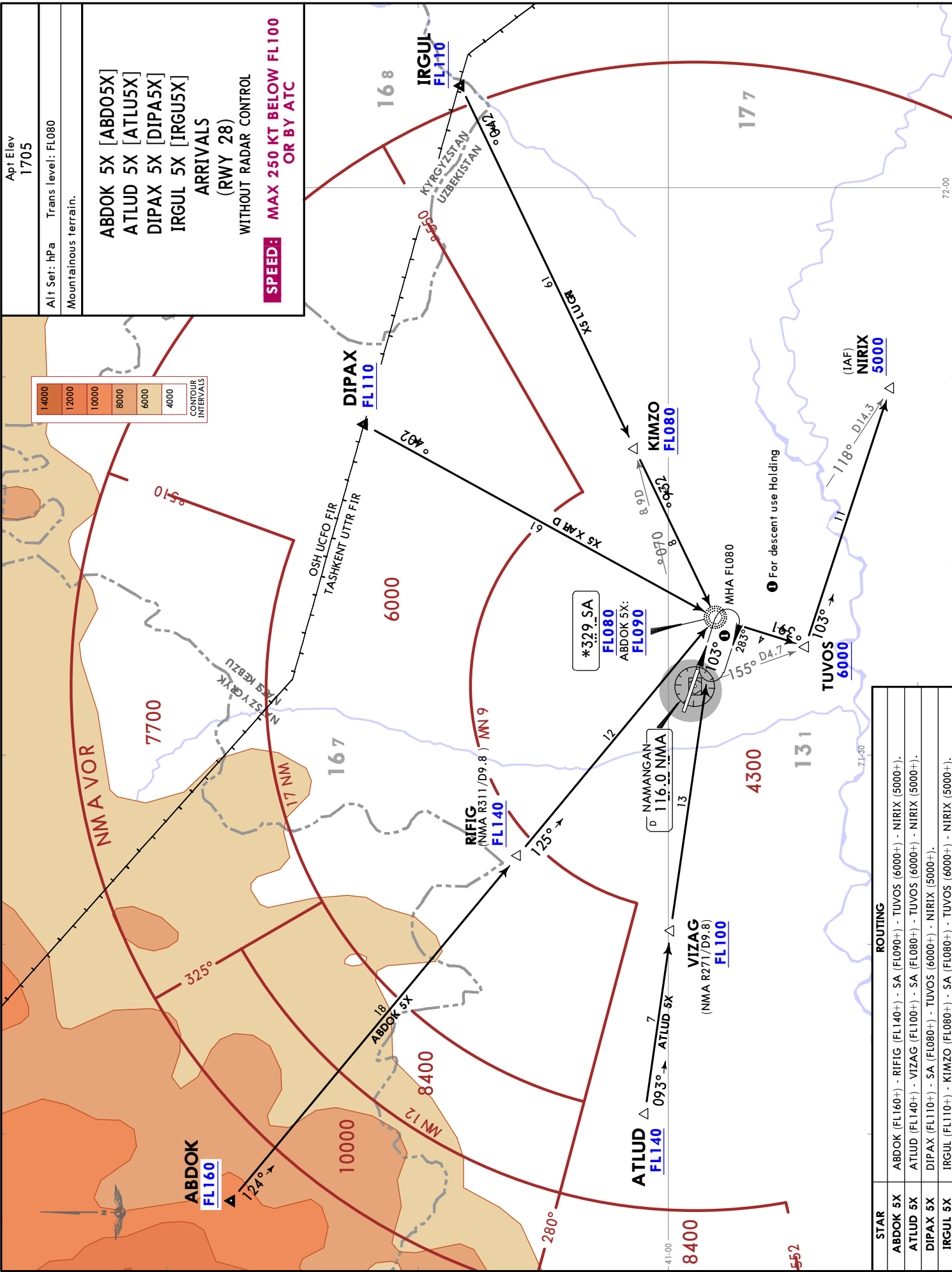
ARRIVALS
(RWY 28)
WITHOUT RADAR CONTROL

**SPEED: MAX 250 KT BELOW FL100
OR BY ATC**



UTFN/NMA
NAMANGAN

4 OCT 24 10-2



STAR	ROUTING
ABDOK 5X	ABDOK (FL160+) - RIFIG (FL140+) - SA (FL090+) - TUVOS (6000+) - NIRIX (5000+).
ATLUD 5X	ATLUD (FL140+) - VIZAG (FL100+) - SA (FL080+) - TUVOS (6000+) - NIRIX (5000+).
DIPAX 5X	DIPAX (FL110+) - SA (FL080+) - TUVOS (6000+) - NIRIX (5000+).
IRGUL 5X	IRGUL (FL110+) - KIMZO (FL080+) - SA (FL080+) - TUVOS (6000+) - NIRIX (5000+).

CHANGES: Operation hours of SA.

JEYPESEN
4 OCT 24 (10-2A)

UTFN/NMA
NAMANGAN

STAR

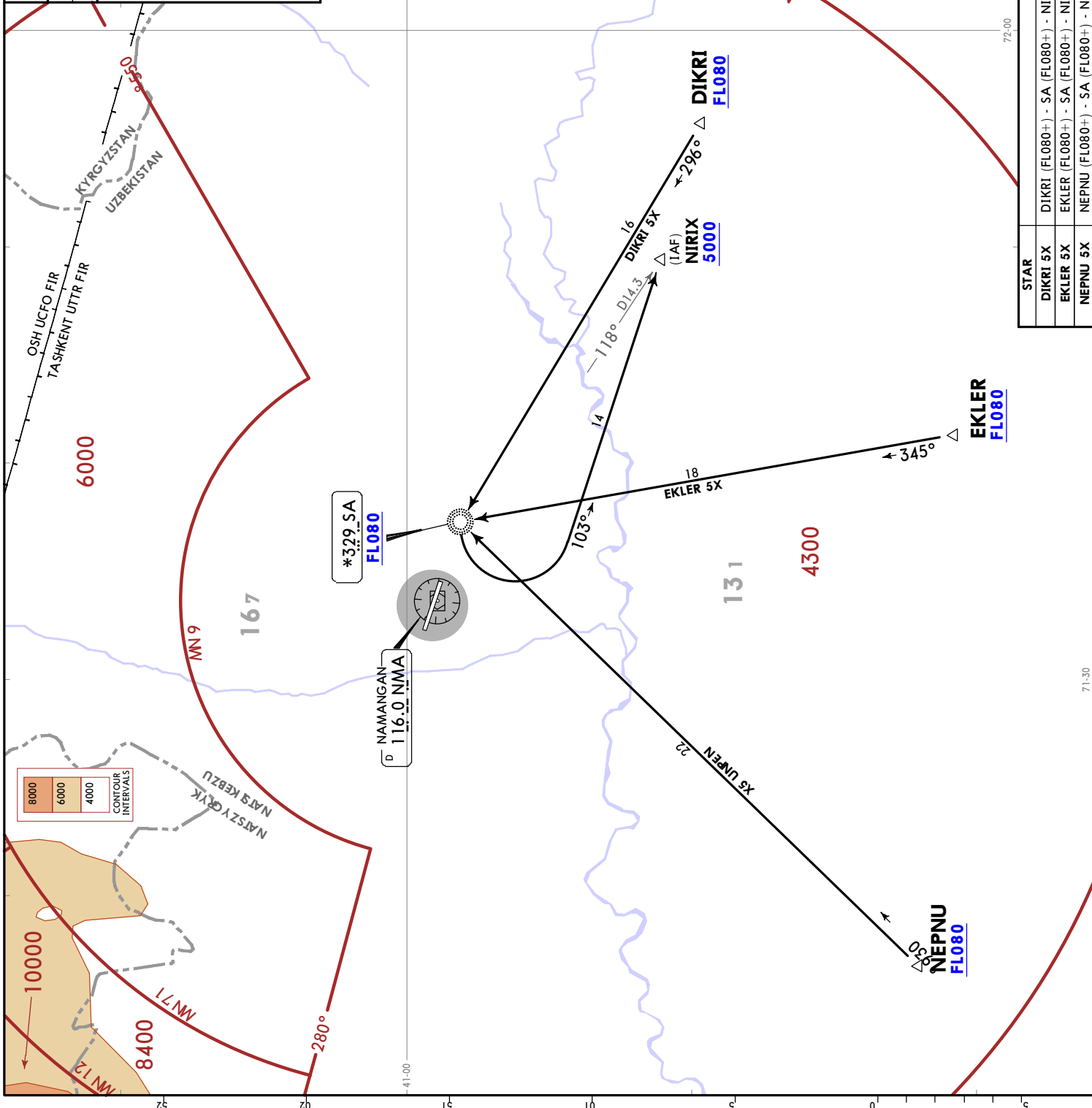
Apt Elev
1705

Alt Set: hPa Trans level: FL080
Mountainous terrain.

**DIKRI 5X [DIKR5X]
EKLER 5X [EKLE5X]
NEPNU 5X [NEPN5X]**

**ARRIVALS
(RWY 28)
WITHOUT RADAR CONTROL**

**SPEED: MAX 250 KT BELOW FL100
OR BY ATC**



STAR	ROUTING
DIKRI 5X	DIKRI (FL080+) - SA (FL080+) - NIRIX (5000+).
EKLER 5X	EKLER (FL080+) - SA (FL080+) - NIRIX (5000+).
NEPNU 5X	NEPNU (FL080+) - SA (FL080+) - NIRIX (5000+).

8000	6000	4000
CONTOUR INTERVALS		

NAMANGAN, UZBEKISTAN

UTFN/NMA
NAMANGAN

JEPPESEN
4 NOV 22 (10-2B)

STAR

Apt Elev
1705

Alt Set: hPa Trans level: FL080

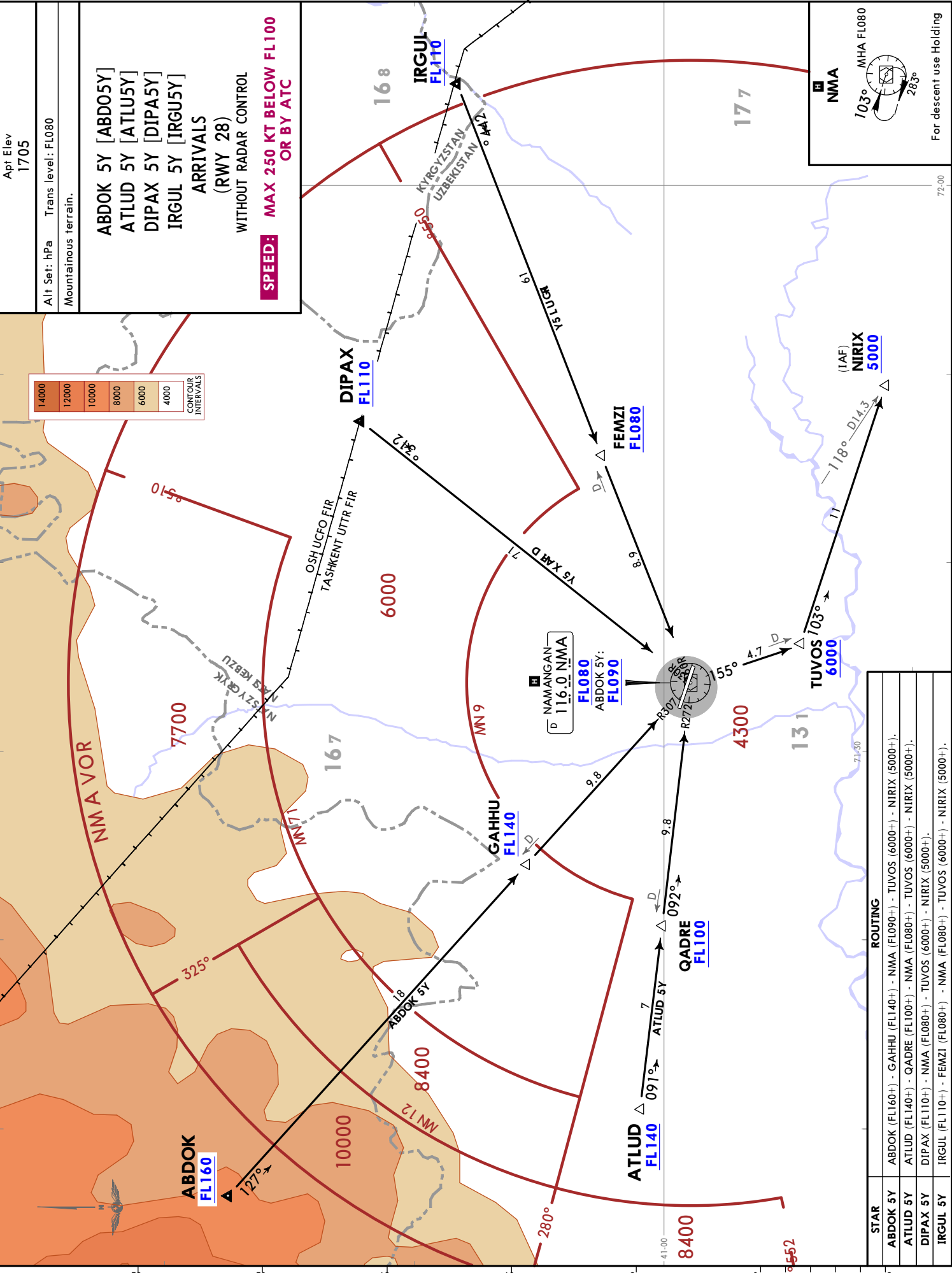
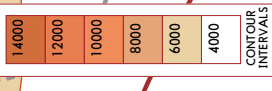
Mountainous terrain.

ABDOK 5Y [ABD05Y]
ATLUD 5Y [ATLU5Y]
DIPAX 5Y [DIPA5Y]
IRGUL 5Y [IRGU5Y]

ARRIVALS
(RWY 28)

WITHOUT RADAR CONTROL

**SPEED: MAX 250 KT BELOW FL100
OR BY ATC**



NMA

103° MHA FL080

283°

For descent use Holding

STAR	ROUTING
ABDOK 5Y	ABDOK (FL160+) - GAHHU (FL140+) - NMA (FL090+) - TUVOS (6000+) - NIRIX (5000+).
ATLUD 5Y	ATLUD (FL140+) - QADRE (FL100+) - NMA (FL080+) - TUVOS (6000+) - NIRIX (5000+).
DIPAX 5Y	DIPAX (FL110+) - NMA (FL080+) - TUVOS (6000+) - NIRIX (5000+).
IRGUL 5Y	IRGUL (FL110+) - FEMZI (FL080+) - NMA (FL080+) - TUVOS (6000+) - NIRIX (5000+).

JEPPESEN
 4 NOV 22 (10-2C)
STAR

UTFN/NMA
 NAMANGAN

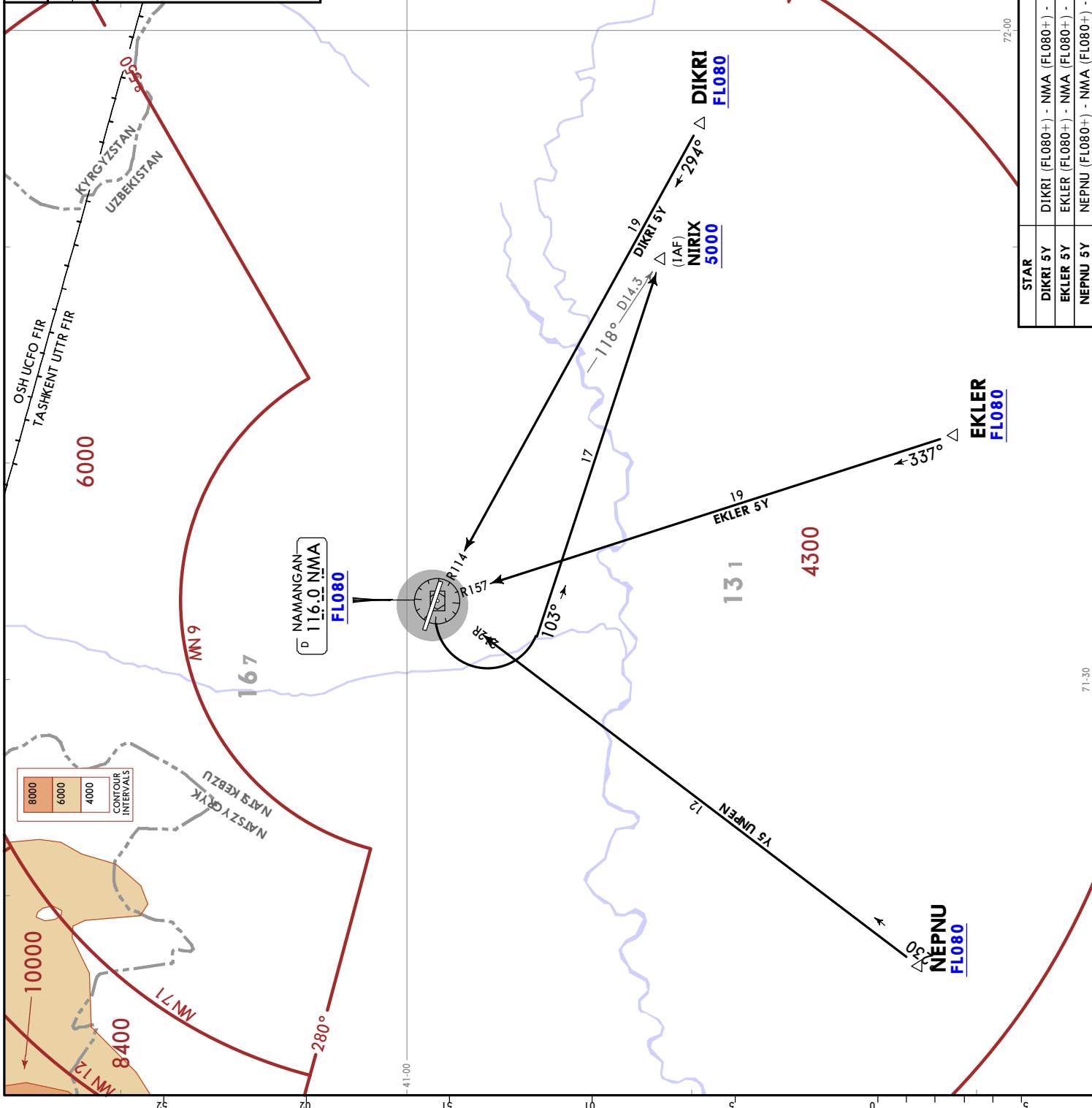
NAMANGAN, UZBEKISTAN

Apt Elev
 1705

Alt Set: hPa Trans level: FL080
 Mountainous terrain.

**DIKRI 5Y [DIKR5Y]
 EKLER 5Y [EKLE5Y]
 NEPNU 5Y [NEPN5Y]
 ARRIVALS
 (RWY 28)
 WITHOUT RADAR CONTROL**

**SPEED: MAX 250 KT BELOW FL100
 OR BY ATC**



STAR	ROUTING
DIKRI 5Y	DIKRI (FL080+) - NMA (FL080+) - NIRIX (5000+).
EKLER 5Y	EKLER (FL080+) - NMA (FL080+) - NIRIX (5000+).
NEPNU 5Y	NEPNU (FL080+) - NMA (FL080+) - NIRIX (5000+).

NAMANGAN, UZBEKISTAN

SID

UTFN/NMA
NAMANGAN

21 OCT 22 10-3 Eff 3 Nov

JEPPESEN

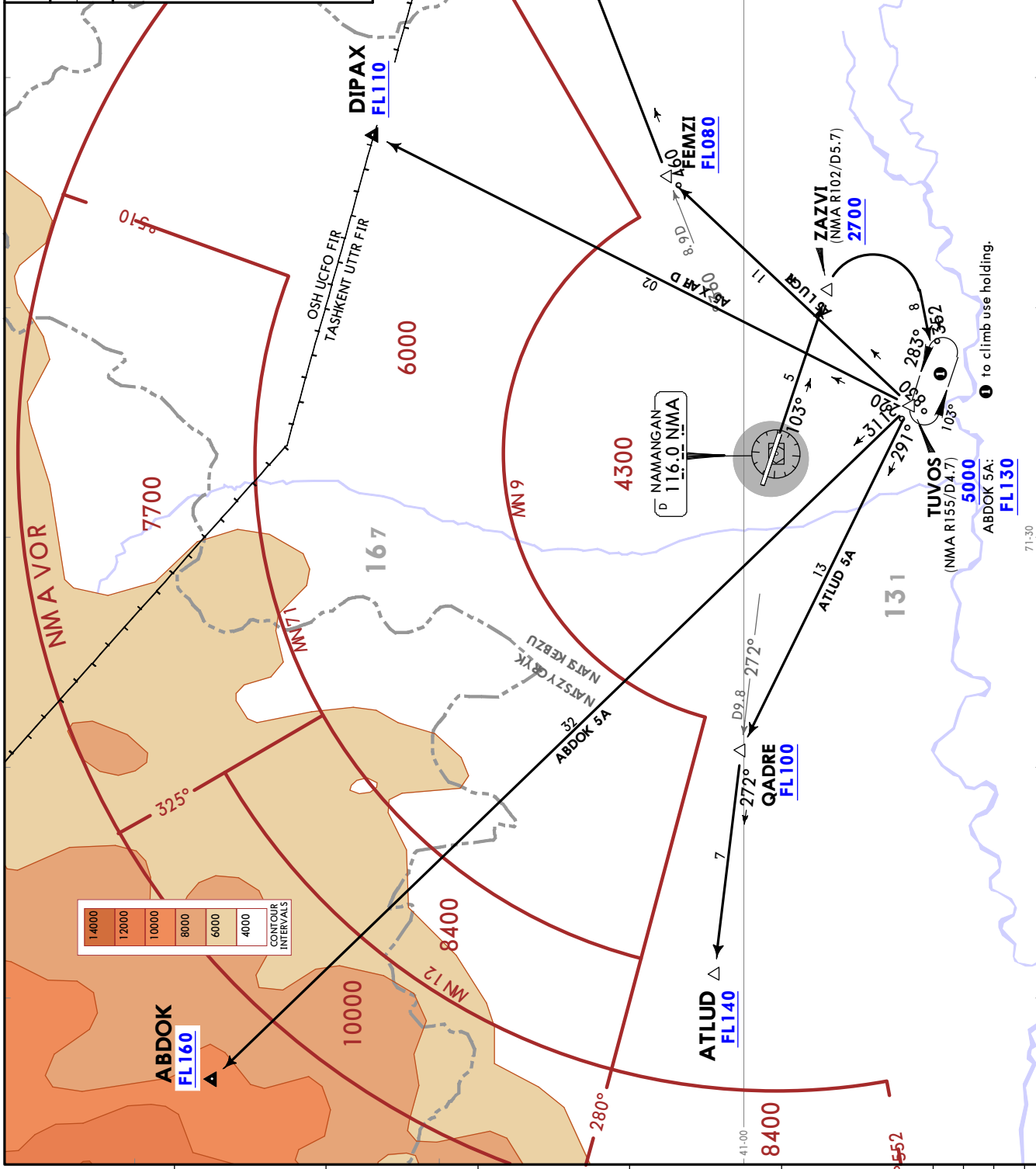
Apt Elev
1705

Trans alt: 6000

1. RADAR control available above 3000.
2. Mountainous terrain.

ABDOK 5A [ABD05A]
ATLUD 5A [ATL05A]
DIPAX 5A [DIP05A]
IRGUL 5A [IRG05A]
DEPARTURES
(RWY 10)

**SPEED: MAX 250 KT BELOW FL100
OR BY ATC**



ABDOK 5A & ATLUD 5A
These SIDs require a minimum climb gradient of 6.5% up to FL140.

Gnd speed-KT	75	100	150	200	250	300
6.5% V/V (fpm)	494	658	987	1316	1646	1975

ROUTING

Initial climb clearance FL080 or by ATC

SID	Routing
ABDOK 5A	Climb on 103° track to ZAZVI, turn RIGHT, 253° track, intercept 283° track to TUVOS, 311° track to ABDOK.
ATLUD 5A	Climb on 103° track to ZAZVI, turn RIGHT, 253° track, intercept 283° track to TUVOS, 291° track to QADRE, turn LEFT, 272° track to ATLUD.
DIPAX 5A	Climb on 103° track to ZAZVI, turn RIGHT, 253° track, intercept 283° track to TUVOS, 022° track to DIPAX.
IRGUL 5A	Climb on 103° track to ZAZVI, turn RIGHT, 253° track, intercept 283° track to TUVOS, 038° track to FEMZI, turn RIGHT, 064° track to IRGUL.

CHANGES: SIDs completely revised; new format.

NAMANGAN, UZBEKISTAN

UTFN/NMA
NAMANGAN

JEPPESEN
21 OCT 22 (10-3A) Eff 3 Nov

SID

Apt Elev
1705

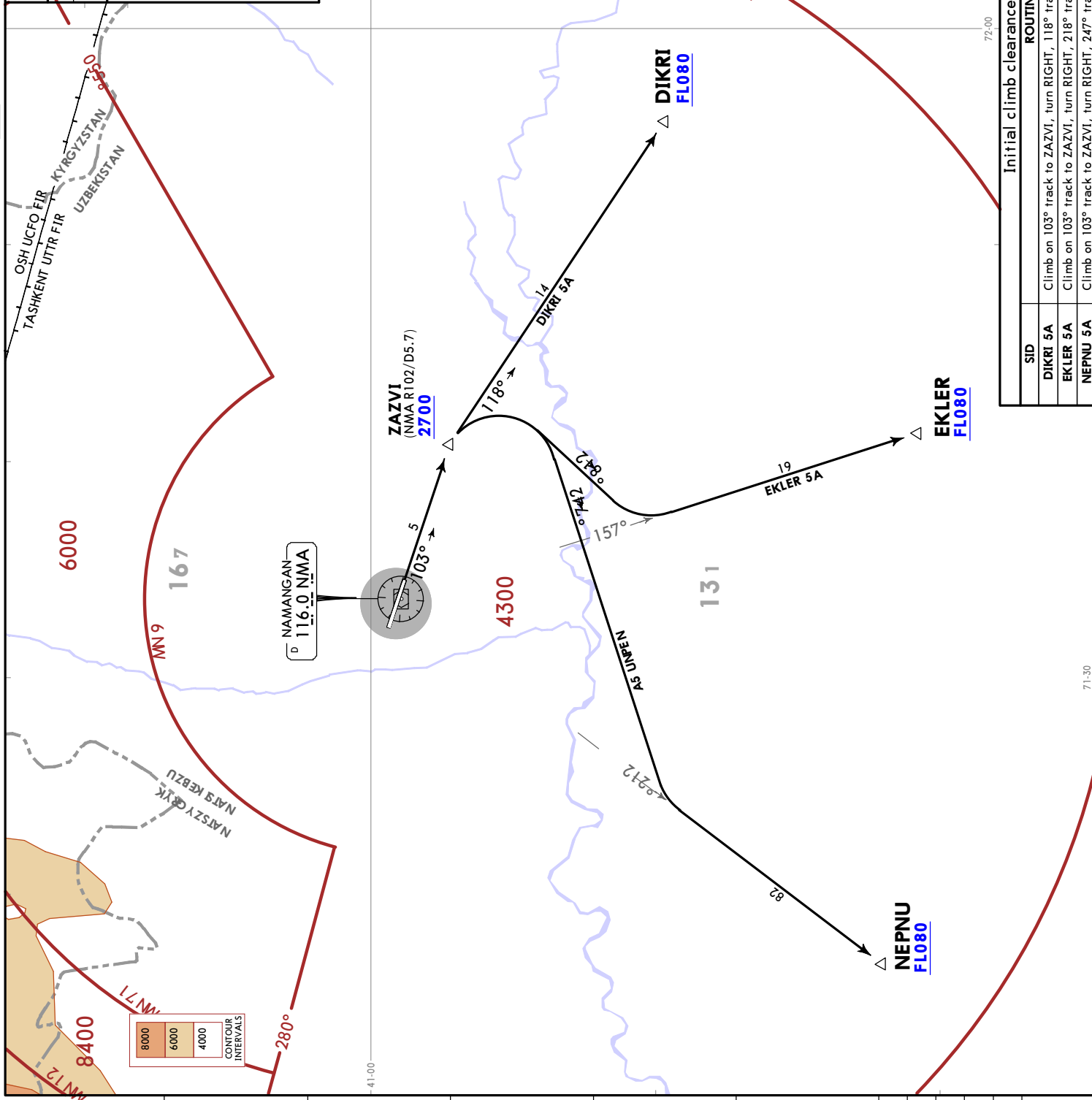
Trans alt: 6000

1. RADAR control available above 3000.
2. Mountainous terrain.

**DIKRI 5A [DIKR5A]
EKLER 5A [EKLE5A]
NEPNU 5A [NEPN5A]**

**DEPARTURES
(RWY 10)**

**SPEED: MAX 250 KT BELOW FL100
OR BY ATC**



ROUTING	
SID	Initial climb clearance FL080 or by ATC
DIKRI 5A	Climb on 103° track to ZAZVI, turn RIGHT, 118° track to DIKRI.
EKLER 5A	Climb on 103° track to ZAZVI, turn RIGHT, 218° track, turn LEFT to intercept R157 NMA to EKLER.
NEPNU 5A	Climb on 103° track to ZAZVI, turn RIGHT, 247° track, turn LEFT to intercept R212 NMA to NEPNU.

NAMANGAN, UZBEKISTAN **SID**

UTFN/NMA
NAMANGAN
21 OCT 22 (10-3B) Eff 3 Nov

JEPPESEN

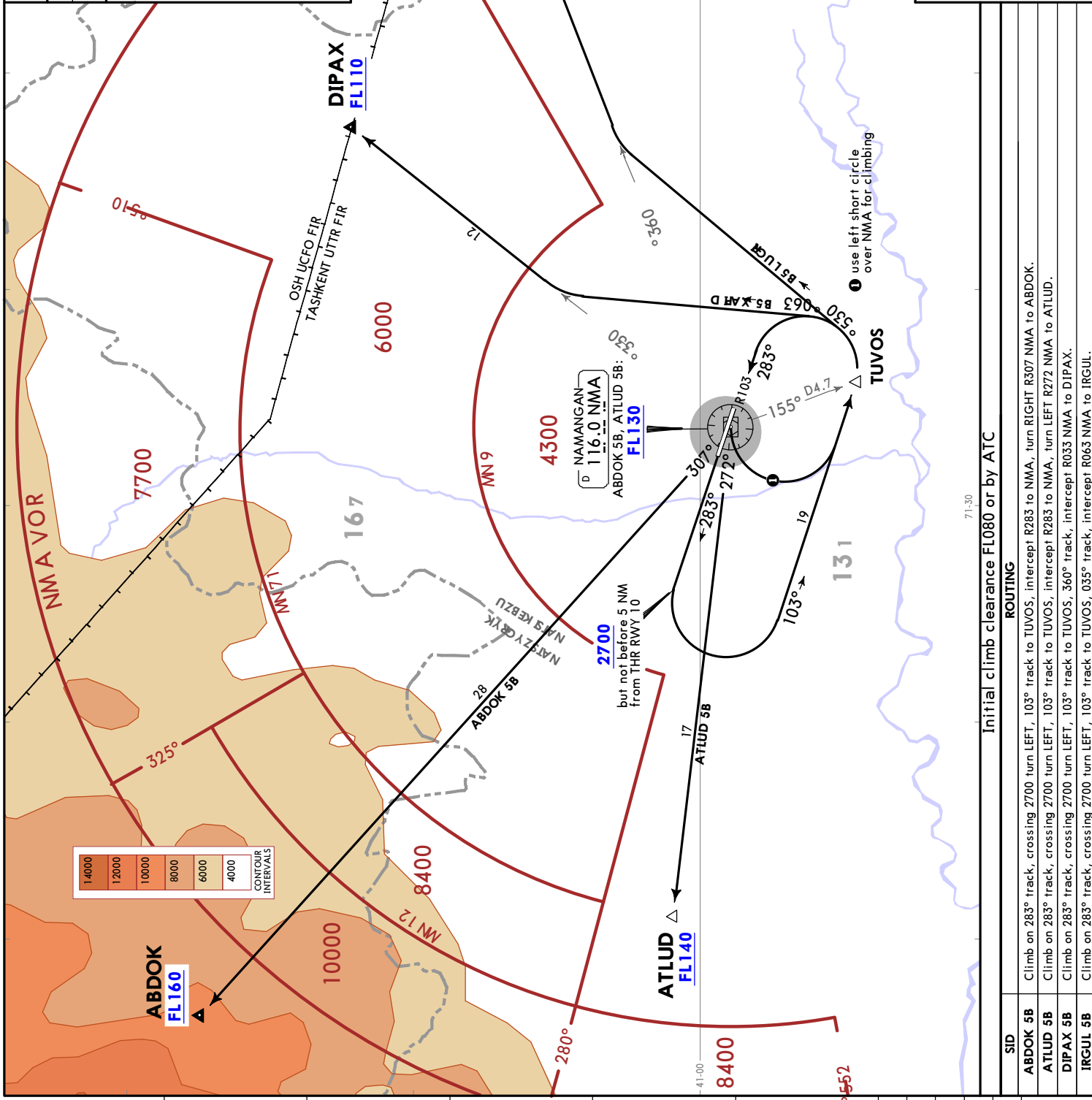
Apt Elev
1705

Trans alt: 6000

1. RADAR control available above 3000.
2. Mountainous terrain.

ABDOK 5B [ABD05B]
ATLUD 5B [ATLU5B]
DIPAX 5B [DIPA5B]
IRGUL 5B [IRGU5B]
DEPARTURES
(RWY 28)

SPEED: MAX 250 KT BELOW FL100 OR BY ATC



These SIDs require minimum climb gradients of

ABDOK 5B: 3.7% up to 2700, then 6.5% up to FL140.
ATLUD 5B: 3.7% up to 2700, then 6.5% up to FL140.
DIPAX 5B: 3.7% up to 2700.
IRGUL 5B: 3.7% up to 2700.
If unable advise ATC.

Gnd speed-KT	75	100	150	200	250	300
3.7% V/V (fpm)	281	375	562	749	937	1124
6.5% V/V (fpm)	494	658	987	1316	1646	1975

ROUTING

Initial climb clearance FL080 or by ATC

SID	ROUTING
ABDOK 5B	Climb on 283° track, crossing 2700 turn LEFT, 103° track to TUVOS, intercept R283 to NMA, turn RIGHT R307 NMA to ABDOK.
ATLUD 5B	Climb on 283° track, crossing 2700 turn LEFT, 103° track to TUVOS, intercept R283 to NMA, turn LEFT R272 NMA to ATLUD.
DIPAX 5B	Climb on 283° track, crossing 2700 turn LEFT, 103° track to TUVOS, 360° track, intercept R033 NMA to DIPAX.
IRGUL 5B	Climb on 283° track, crossing 2700 turn LEFT, 103° track to TUVOS, 035° track, intercept R063 NMA to IRGUL.

UTFN/NMA

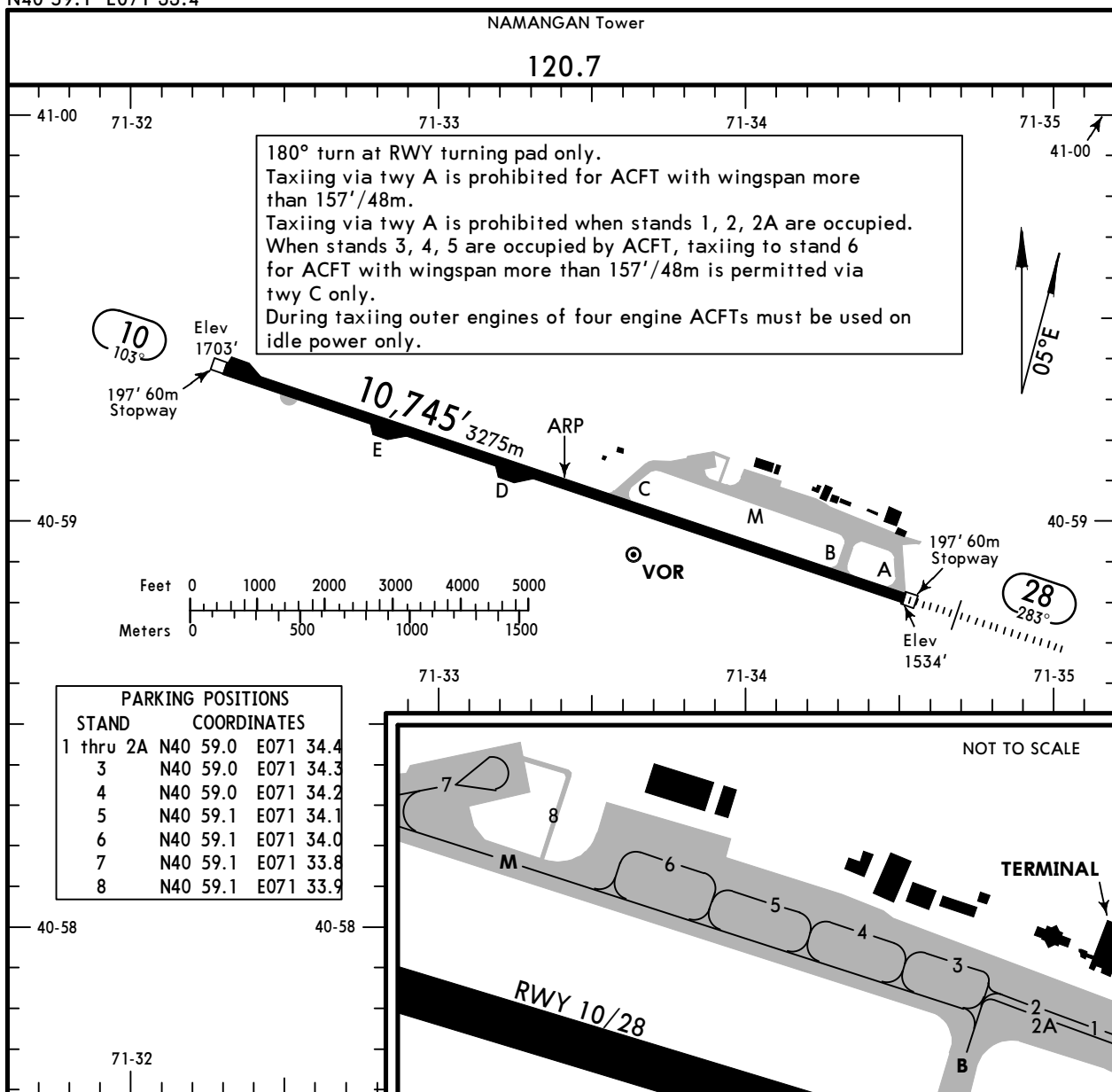
Apt Elev **1705'**
N40 59.1 E071 33.4



16 AUG 24 **10-9**

NAMANGAN, UZBEKISTAN

NAMANGAN INTL



ADDITIONAL RUNWAY INFORMATION

RWY	HIRL (60m)	① HIALS	PAPI-L (3.0°)	USABLE LENGTHS		TAKE-OFF	WIDTH
				Threshold	Glide Slope		
10	HIRL (60m)					②	148' 45m
28	HIRL (60m)			10,512' 3204m	9721' 2963m		

① length 760m

② TAKE-OFF RUN AVAILABLE

<u>RWY 10:</u>		<u>RWY 28:</u>	
From rwy head	10,745' (3275m)	From rwy head	10,512' (3204m)
turning bay E	7874' (2400m)	twy B int	9432' (2875m)
turning bay D	5906' (1800m)	twy C int	5889' (1795m)
twy C int	4593' (1400m)		

State	TAKE-OFF		
	RL & RCLM & Runway end lights	RL & RCLM (DAY only)	RCLM (DAY only)
A	R/V250m		R/V500m
B	R/V250m		
C	R/V250m		
D	R/V300m		

UTFN/NMA

JEPPESEN
 28 OCT 22
 Eff 3 Nov 10-9S

EASA AIR OPS
NAMANGAN, UZBEKISTAN
 NAMANGAN INTL

STRAIGHT-IN RWY		A	B	C	D
28	① ILS	1734'(200')	1734'(200')	1744'(210')	1754'(220')
	FULL	R/V750m	R/V750m	R/V750m	R/V750m
	ALS out	R/V1200m	R/V1200m	R/V1200m	R/V1300m
	LOC	NOT AUTH	NOT AUTH	NOT AUTH	NOT AUTH
① ②	VOR	2040'(506')	2040'(506')	2040'(506')	2040'(506')
		R/V2200m	R/V2200m	R/V2600m	R/V2600m
	ALS out	R/V2400m	R/V2400m	R/V2600m	R/V2600m
① ②	NDB	1910'(376')	1910'(376')	1910'(376')	1910'(376')
		R/V1600m	R/V1600m	R/V1800m	R/V1800m
	ALS out	R/V1700m	R/V1700m	R/V1800m	R/V1800m

① Missed apch climb grad min 3.7% up to 2700'.

② Continuous Descent Final Approach.

TAKE-OFF

	RL & RCLM		RL or RCLM	Adequate Vis Ref	
	DAY	NIGHT	DAY	DAY	NIGHT
A	R250m			R/V500m	NA
B					
C	R300m			R/V500m	NA
D					

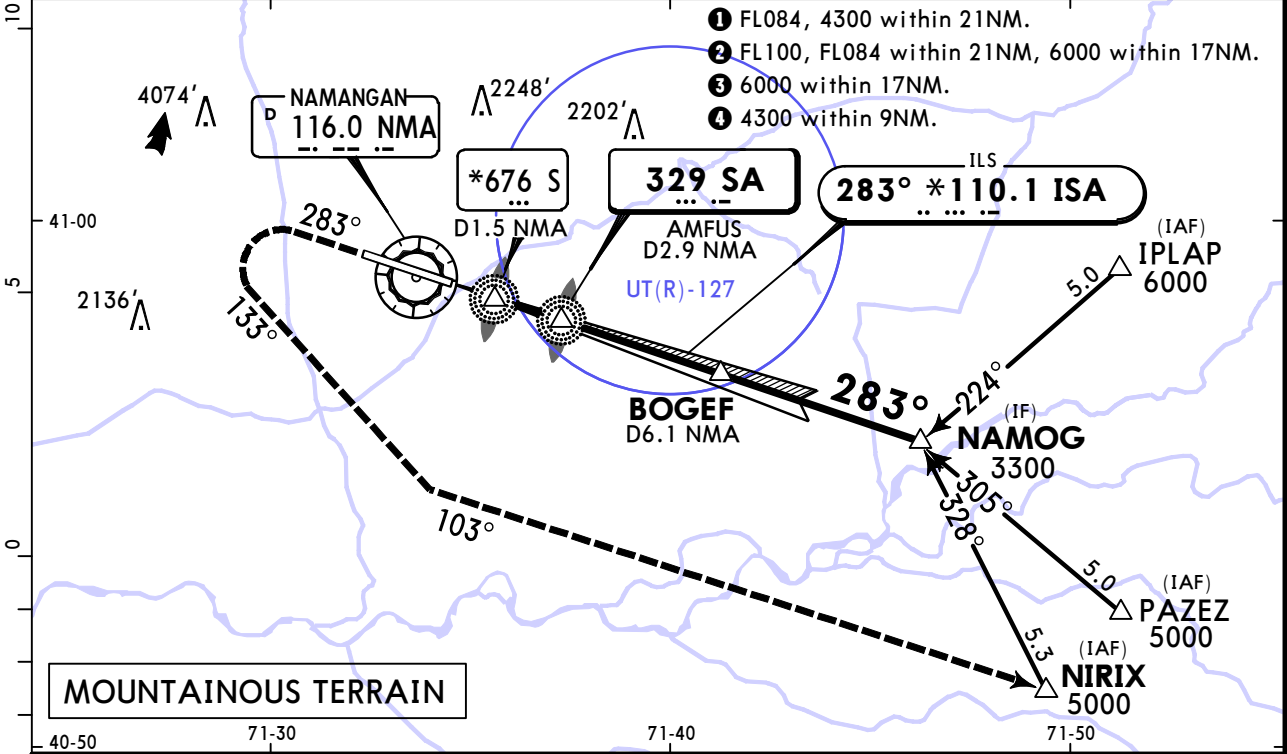
UTFN/NMA NAMANGAN INTL

16 AUG 24

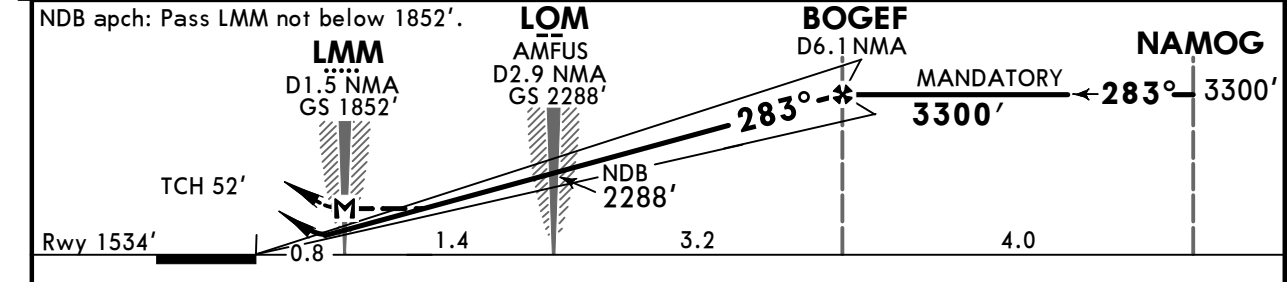
(11-1)

JEPPESSEN NAMANGAN, UZBEKISTAN ILS or 2 NDB Rwy 28

NAMANGAN Approach			NAMANGAN Tower		
125.6			120.7		
LOC ISA *110.1	Final Apch Crs 283°	BOGEF MANDATORY 3300' (1766')	ILS DA(H) Refer to Minimums	Apt Elev 1705'	
NDB SA 329			NDB MDA(H) 1910' (376')	Rwy 1534'	
MISSED APCH: Climb on 283° to 2700' or above, then turn LEFT on 133° to intercept 103° to NIRIX climbing to 5000' or above, then according to chart or as directed. Missed apch climb gradient min 3.7% (225'/NM) up to 2700'.					
Alt Set: hPa		Rwy Elev: 55 hPa	Trans level: FL080		Trans alt: 6000'



NDB	NMA DME	2.0	3.0	4.0	5.0
	ALTITUDE	2007'	2325'	2644'	2962'



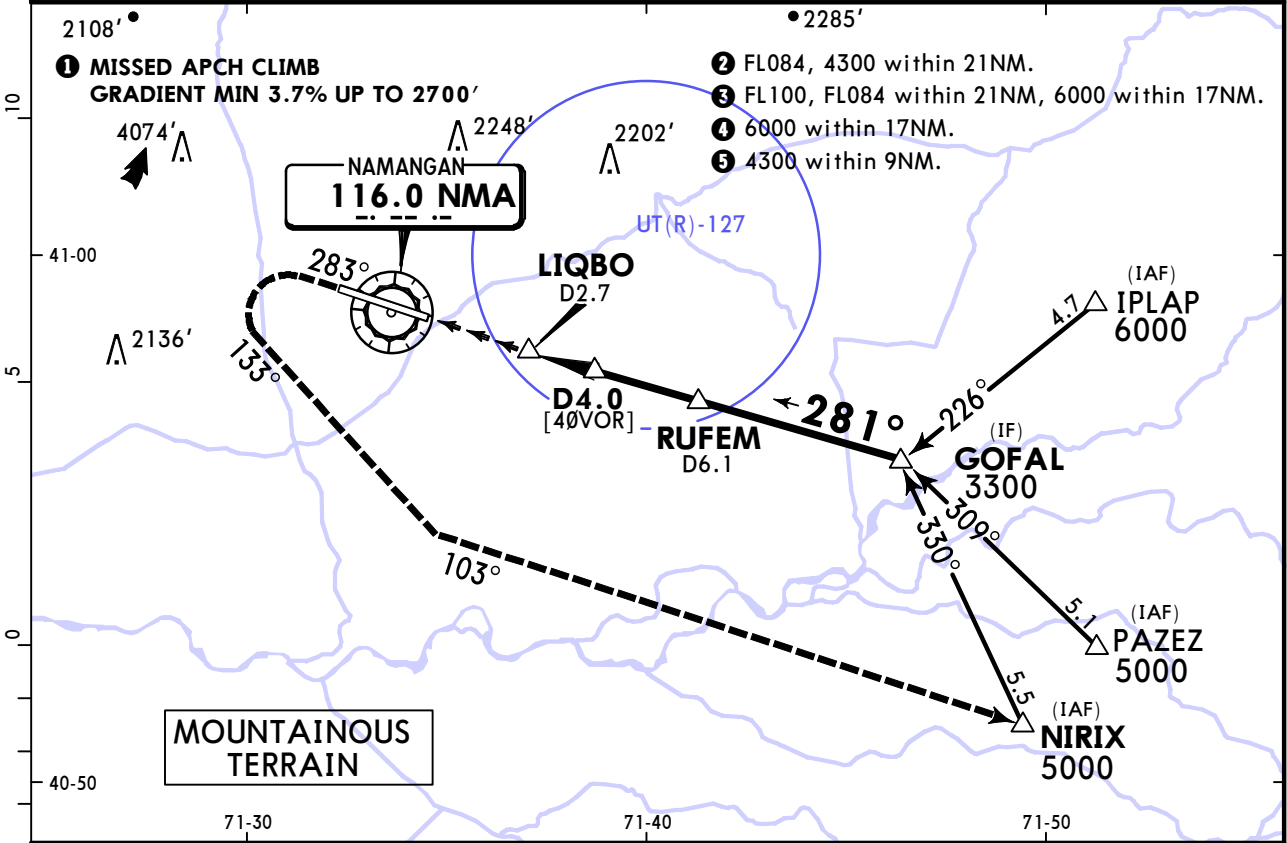
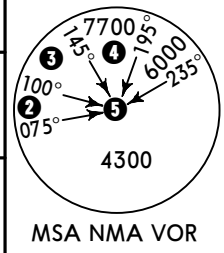
Gnd speed-Kts	70	90	100	120	140	160	HIALS	2700'	on 283°	133°
ILS GS or NDB Desc Angle	3.00°	372	478	531	637	743				
MAP at LMM/D1.5 NMA										

State				STRAIGHT-IN LANDING			
ILS		NDB		ILS		NDB	
DA(H)		C: 1744' (210')		DA(H)		MDA(H) 1910' (376')	
AB: 1734' (200')		D: 1754' (220')		ALS out		ALS out	
A	R/V750m	R/V1200m		R/V1600m		R/V1700m	
B		R/V1300m		R/V1800m			
C		R/V1300m		R/V1800m			
D		R/V1300m		R/V1800m			

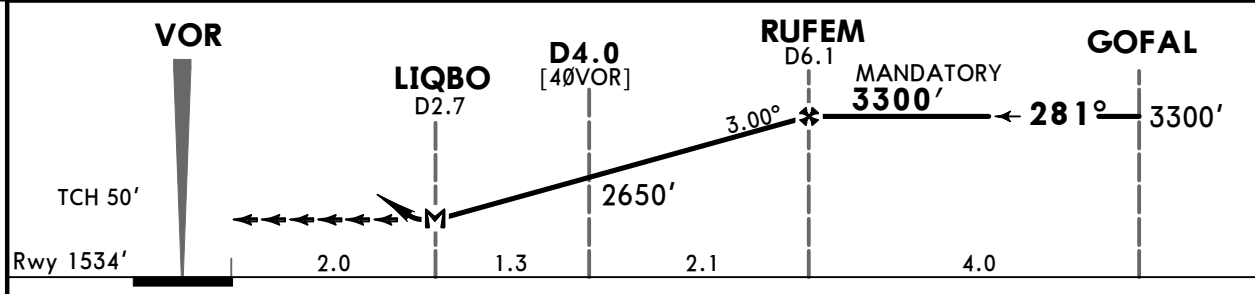
UTFN/NMA NAMANGAN INTL

JEPESEN NAMANGAN, UZBEKISTAN
28 OCT 22 (13-1) **Eff 3 Nov** **VOR DME Rwy 28**

NAMANGAN Approach			NAMANGAN Tower		
125.6			120.7		
VOR NMA 116.0	Final Apch Crs 281°	RUFEM MANDATORY 3300' (1766')	MDA(H) 2040' (506')	Apt Elev 1705' Rwy 1534'	
MISSED APCH: Climb on 283° to 2700' or above, then turn LEFT on 133° to intercept 103° to NIRIX climbing to 5000' or above, then according to chart or as directed.					
Alt Set: hPa		Rwy Elev: 55 hPa		Trans level: FL080	
				Trans alt: 6000'	



NMA DME	2.0	3.0	4.0	5.0
ALTITUDE	2007'	2325'	2644'	2962'



Gnd speed-Kts	70	90	100	120	140	160	HIALS PAPI	2700' on 283°	133° LT
Descent angle 3.00°	372	478	531	637	743	849			
MAP at LIQBO									

State STRAIGHT-IN LANDING
Missed apch climb gradient min 3.7% up to 2700'
MDA(H) **2040'** (506')

A	R/V2200m	ALS out	R/V2400m
B			
C	R/V2600m		
D			

PANS OPS

Chart changes since cycle 04-2025

ADD = added chart, REV = revised chart, DEL = deleted chart.

ACT	PROCEDURE IDENT	INDEX	REV DATE	EFF DATE
NAMANGAN, (NAMANGAN - UTFN)				

TERMINAL CHART CHANGE NOTICES

No Chart Change Notices for Airport UTFN