

List of pages in this Trip Kit

Trip Kit Index
Airport Information For UTSB
Terminal Charts For UTSB
Revision Letter For Cycle 05-2025
Change Notices
Notebook

General Information

Location: BUKHARA UZB
ICAO/IATA: UTSB / BHK
Lat/Long: N39° 46.52', E064° 28.94'
Elevation: 751 ft

Airport Use: Public
Daylight Savings: Not Observed
UTC Conversion: -5:00 = UTC
Magnetic Variation: 5.0° E

Fuel Types: Jet A-1
Repair Types: Minor Airframe, Minor Engine
Customs: Yes
Airport Type: IFR
Landing Fee: Yes
Control Tower: Yes
Jet Start Unit: No
LLWS Alert: No
Beacon: No

Sunrise: 0033 Z
Sunset: 1504 Z

Runway Information

Runway: 01
Length x Width: 9843 ft x 148 ft
Surface Type: asphalt
TDZ-Elev: 738 ft
Lighting: Edge, ALS
Stopway: 177 ft

Runway: 19
Length x Width: 9843 ft x 148 ft
Surface Type: asphalt
TDZ-Elev: 751 ft
Lighting: Edge, ALS
Stopway: 177 ft

Communication Information

Bukhara Tower: 120.100 VHF-DF
Bukhara Tower: 129.000
Bukhara Approach: 124.600
Bukhara Approach: 133.000
Bukhara Tranzit Operations: 131.900

BUKHARA, UZBEKISTAN

STAR

UTSB/BHK
BUKHARA

JEPPESEN
27 AUG 21
Eff 9 Sep

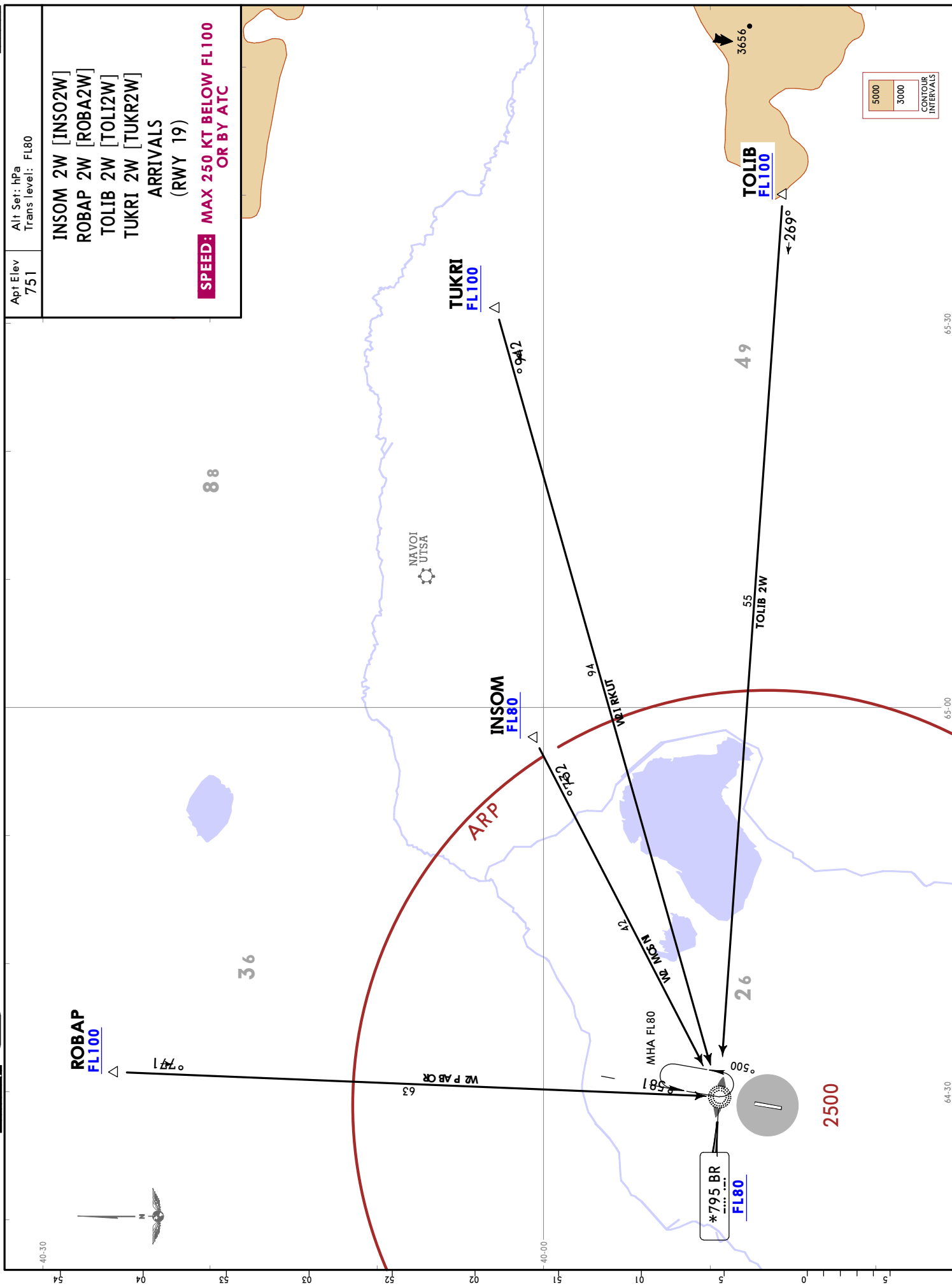
10-2

Apt Elev
751
Alt Set: hPa
Trans level: FL80

INSOM 2W [INSO2W]
ROBAP 2W [ROBA2W]
TOLIB 2W [TOLI2W]
TUKRI 2W [TUKR2W]

ARRIVALS
(RWY 19)

**SPEED: MAX 250 KT BELOW FL100
OR BY ATC**



UTSB/BHK
BUKHARA

JEYPESEN
BUKHARA, UZBEKISTAN

STAR
27 AUG 21 10-2A Eff 9 Sep

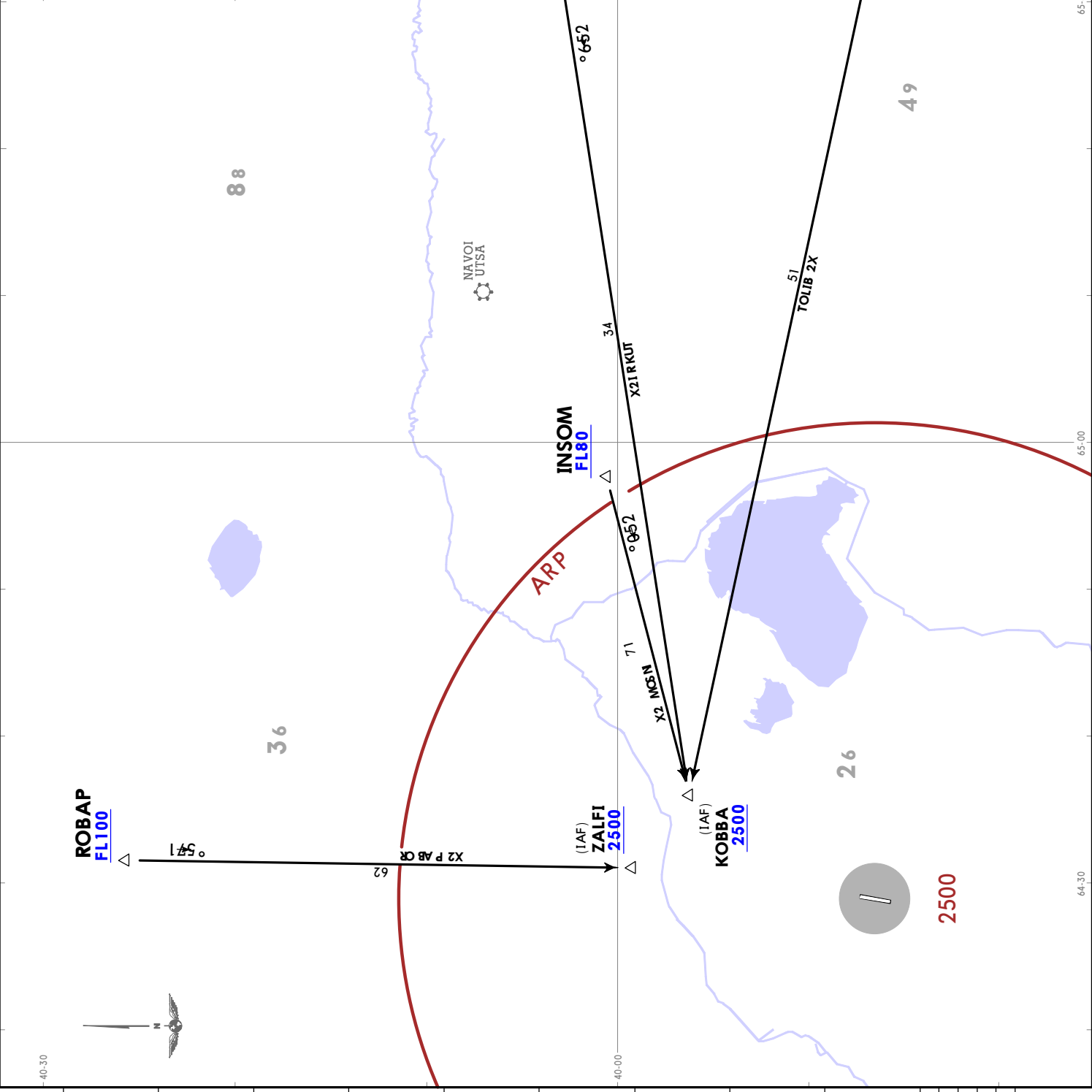
Alt Set: hPa
Trans level: FL80

Apt Elev
751

INSOM 2X [INSO2X]
ROBAP 2X [ROBA2X]
TOLIB 2X [TOLI2X]
TUKRI 2X [TUKR2X]

ARRIVALS
(RWY 19)
UNDER RADAR CONTROL ONLY

**SPEED: MAX 250 KT BELOW FL100
OR BY ATC**



BUKHARA, UZBEKISTAN

STAR

UTSB/BHK
BUKHARA

JEPPESSEN
27 AUG 21
Eff 9 Sep

10-2B

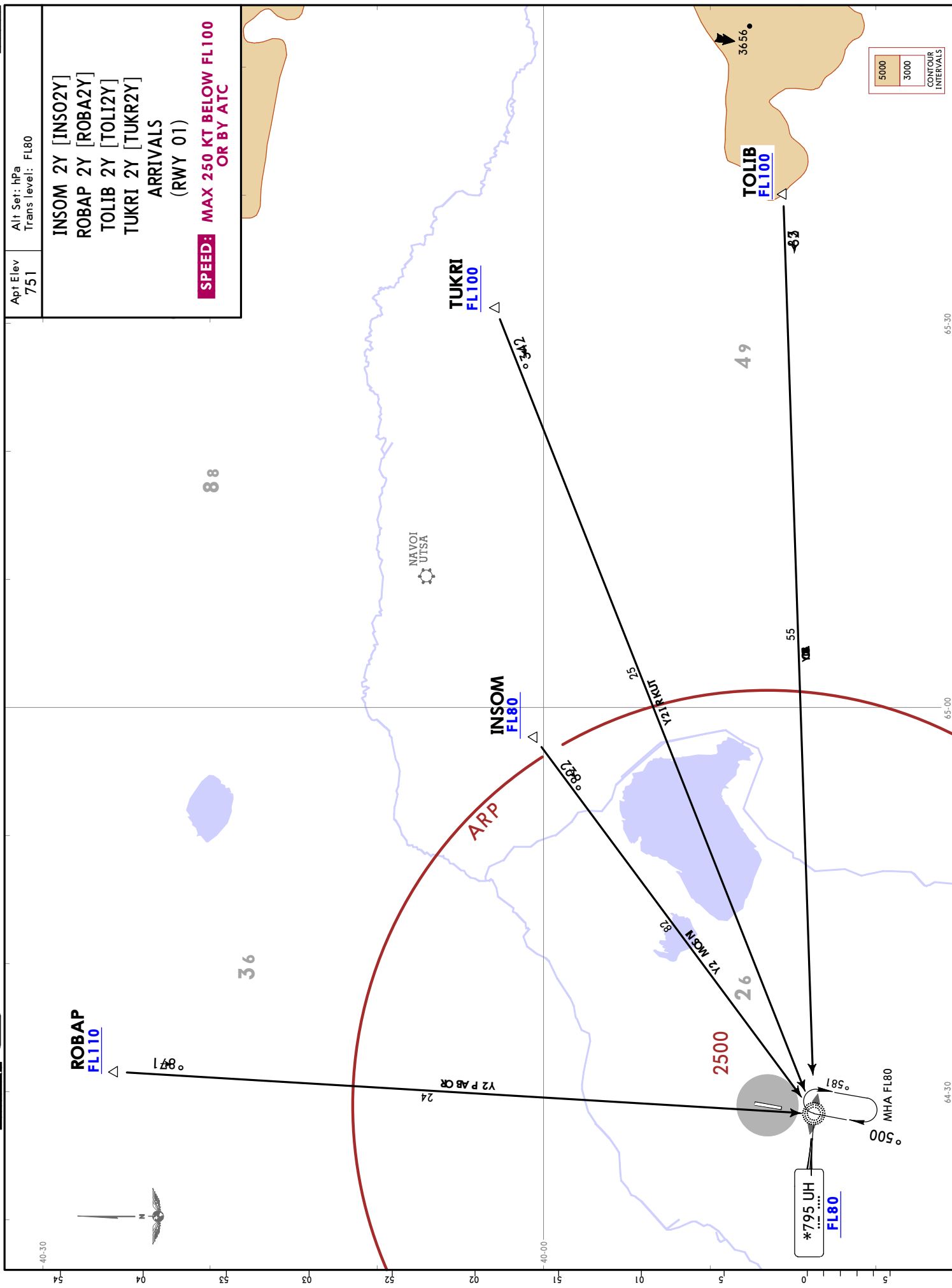
Apt Elev
751

Alt Set: hPa
Trans level: FL80

INSOM 2Y [INSO2Y]
ROBAP 2Y [ROBA2Y]
TOLIB 2Y [TOLI2Y]
TUKRI 2Y [TUKR2Y]

ARRIVALS
(RWY 01)

**SPEED: MAX 250 KT BELOW FL100
OR BY ATC**



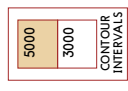
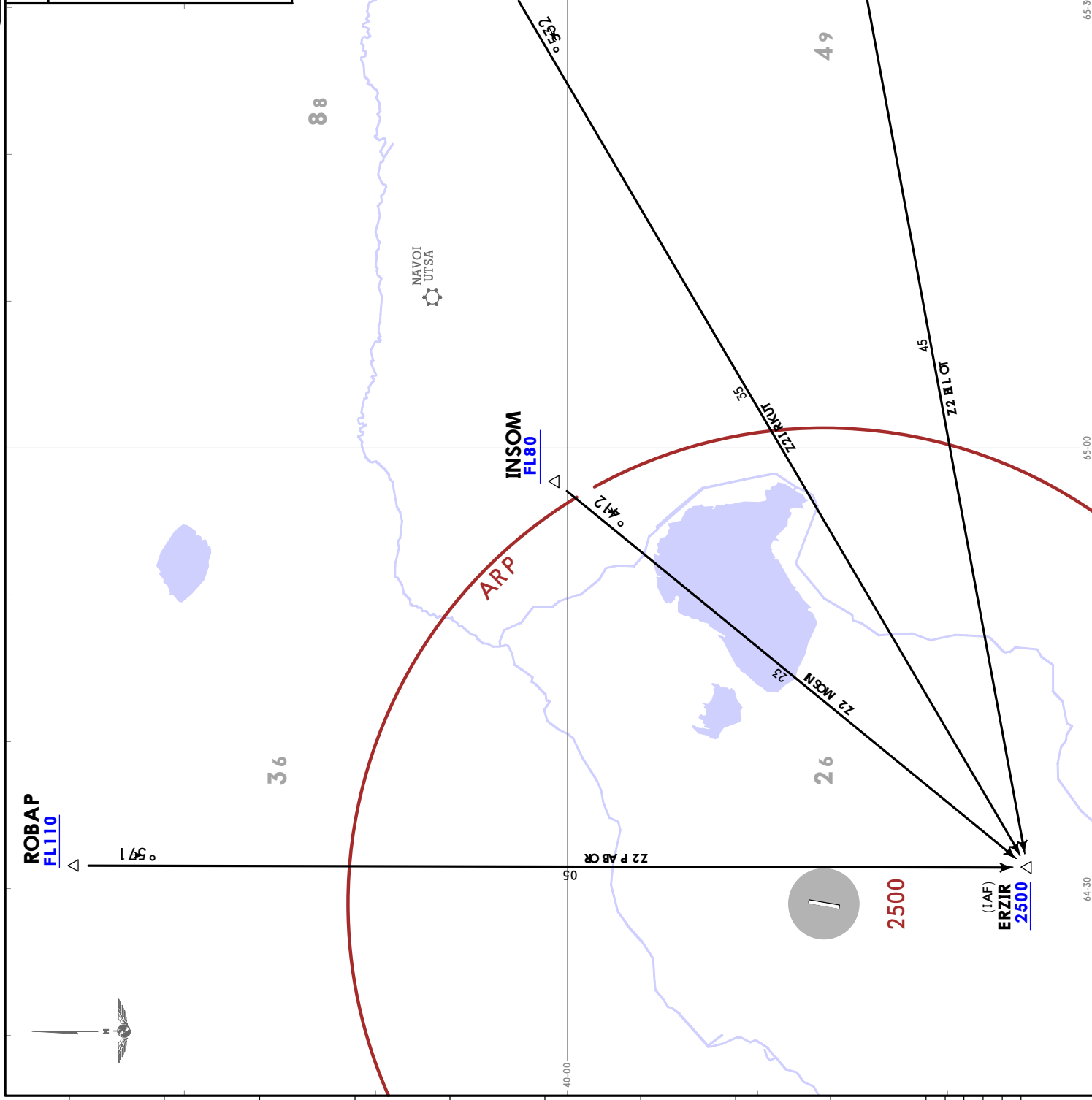
Alt Set: hPa
Trans level: FL80

Apt Elev
751

INSOM 2Z [INSOZZ]
ROBAP 2Z [ROBAZZ]
TOLIB 2Z [TOLI2Z]
TUKRI 2Z [TUKR2Z]

ARRIVALS
(RWY 01)
UNDER RADAR CONTROL ONLY

**SPEED: MAX 250 KT BELOW FL100
OR BY ATC**

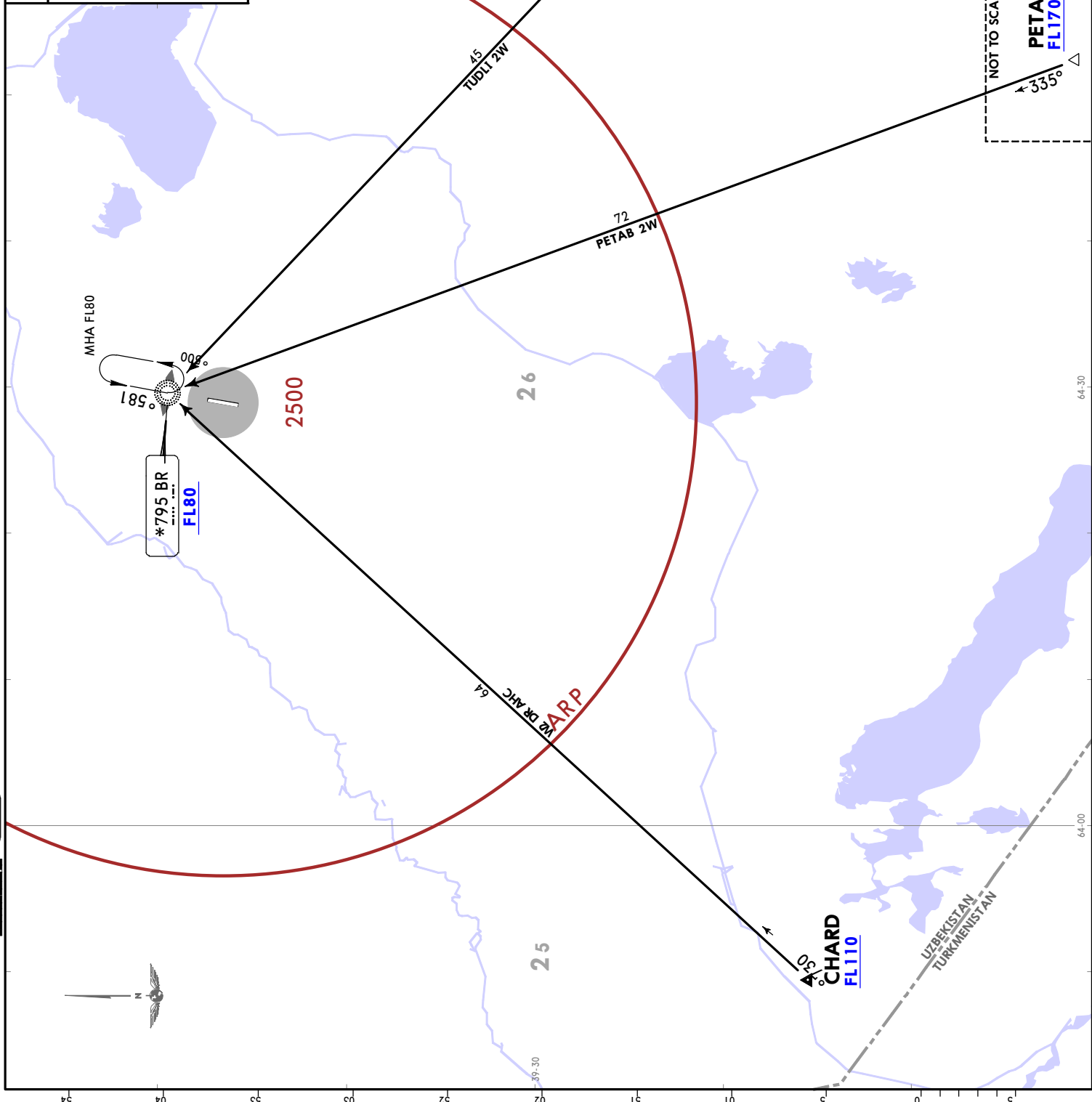


BUKHARA, UZBEKISTAN
STAR

Apt Elev
751
Alt Set: hPa
Trans level: FL80

CHARD 2W [CHAR2W]
PETAB 2W [PETA2W]
TUDLI 2W [TUDL2W]
ARRIVALS
(RWY 19)

**SPEED: MAX 250 KT BELOW FL100
OR BY ATC**



NOT TO SCALE
**PETAB
FL170**

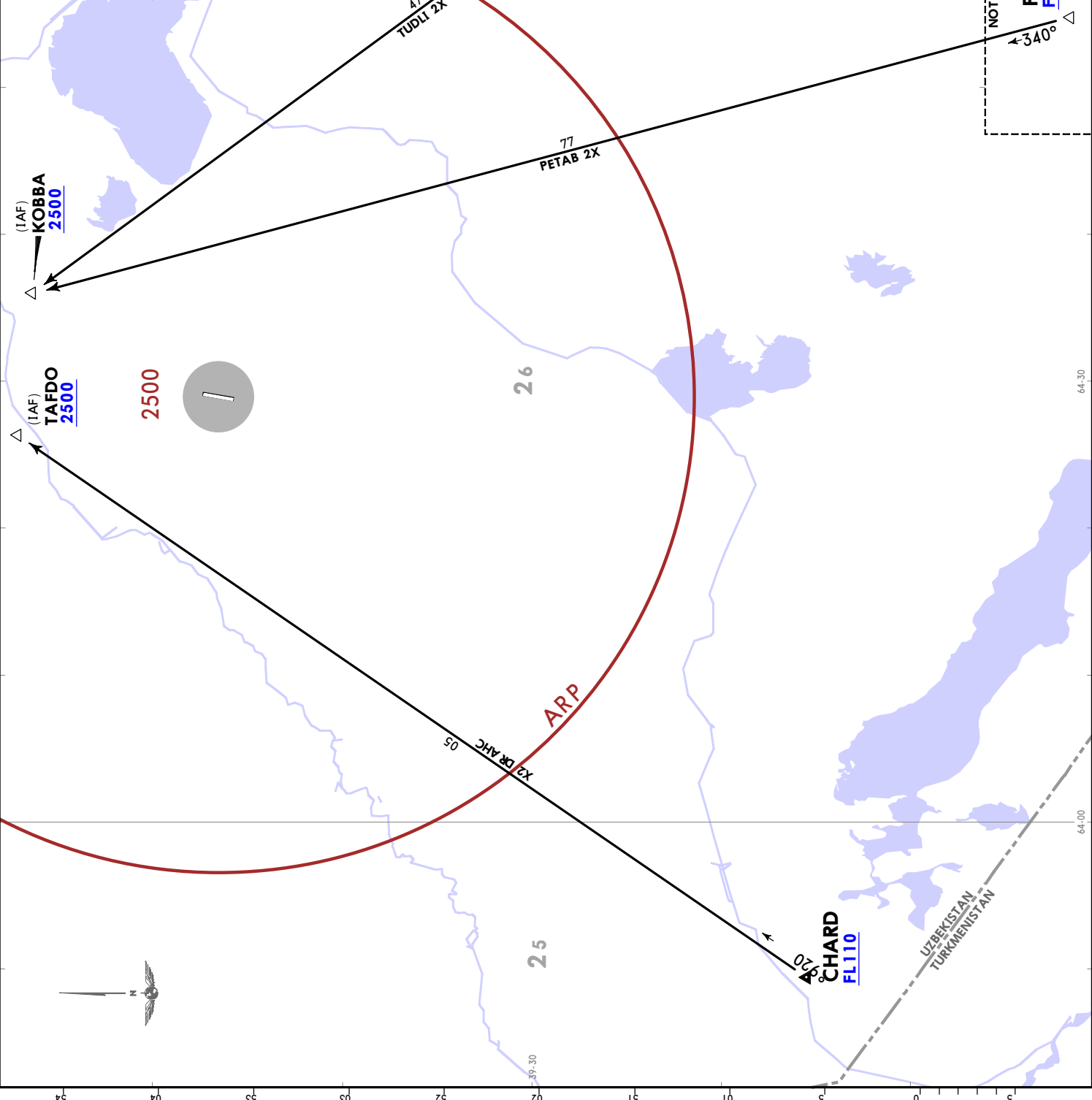
Alt Set: hPa
Trans level: FL80

CHARD 2X [CHAR2X]
PETAB 2X [PETA2X]
TUDLI 2X [TUDL2X]

ARRIVALS
(RWY 19)

UNDER RADAR CONTROL ONLY

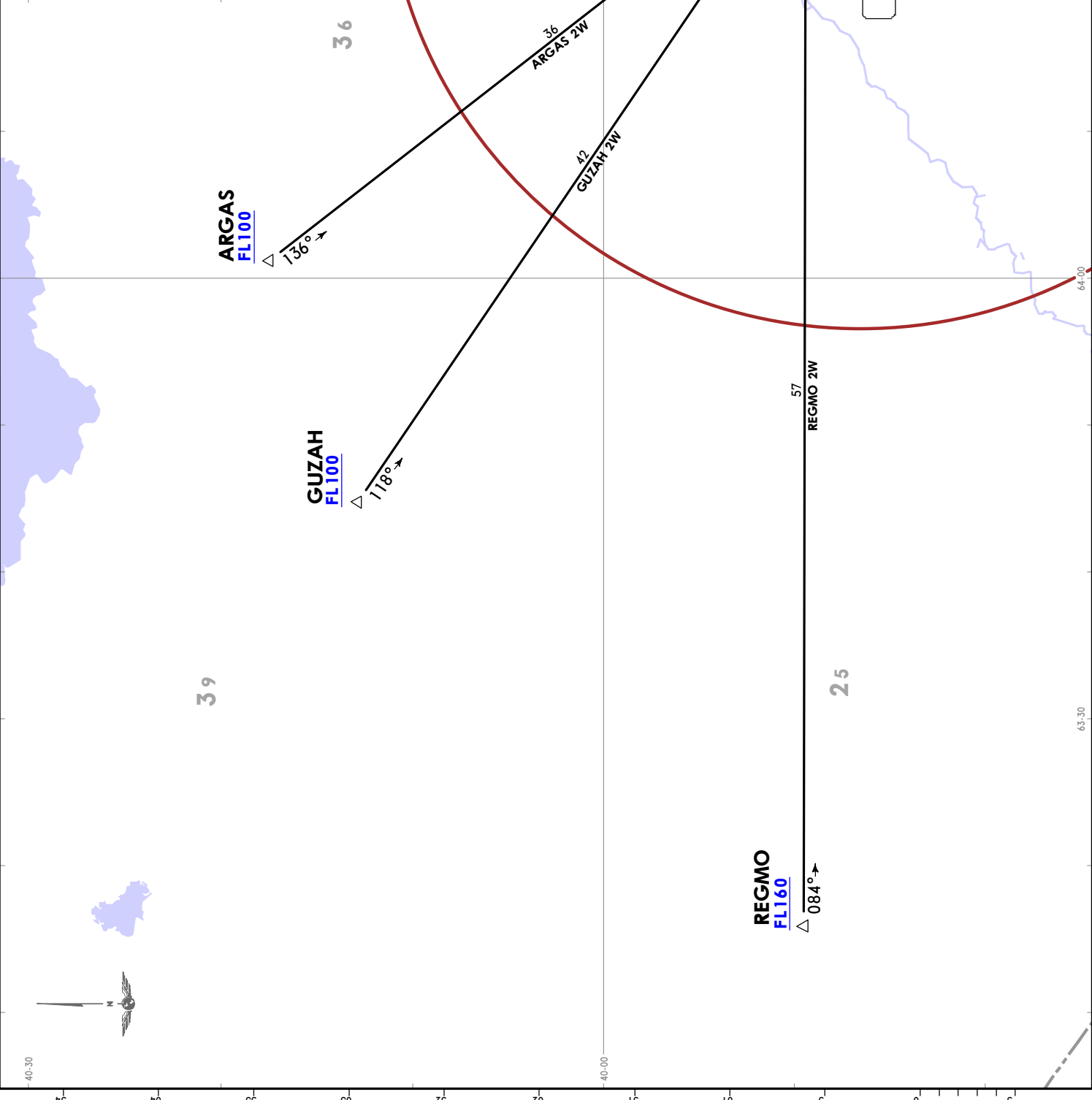
SPEED: MAX 250 KT BELOW FL100 OR BY ATC



BUKHARA, UZBEKISTAN
STAR

UTSB/BHK
BUKHARA
JEPPesen
27 AUG 21
EFF 9 SEP
10-2H

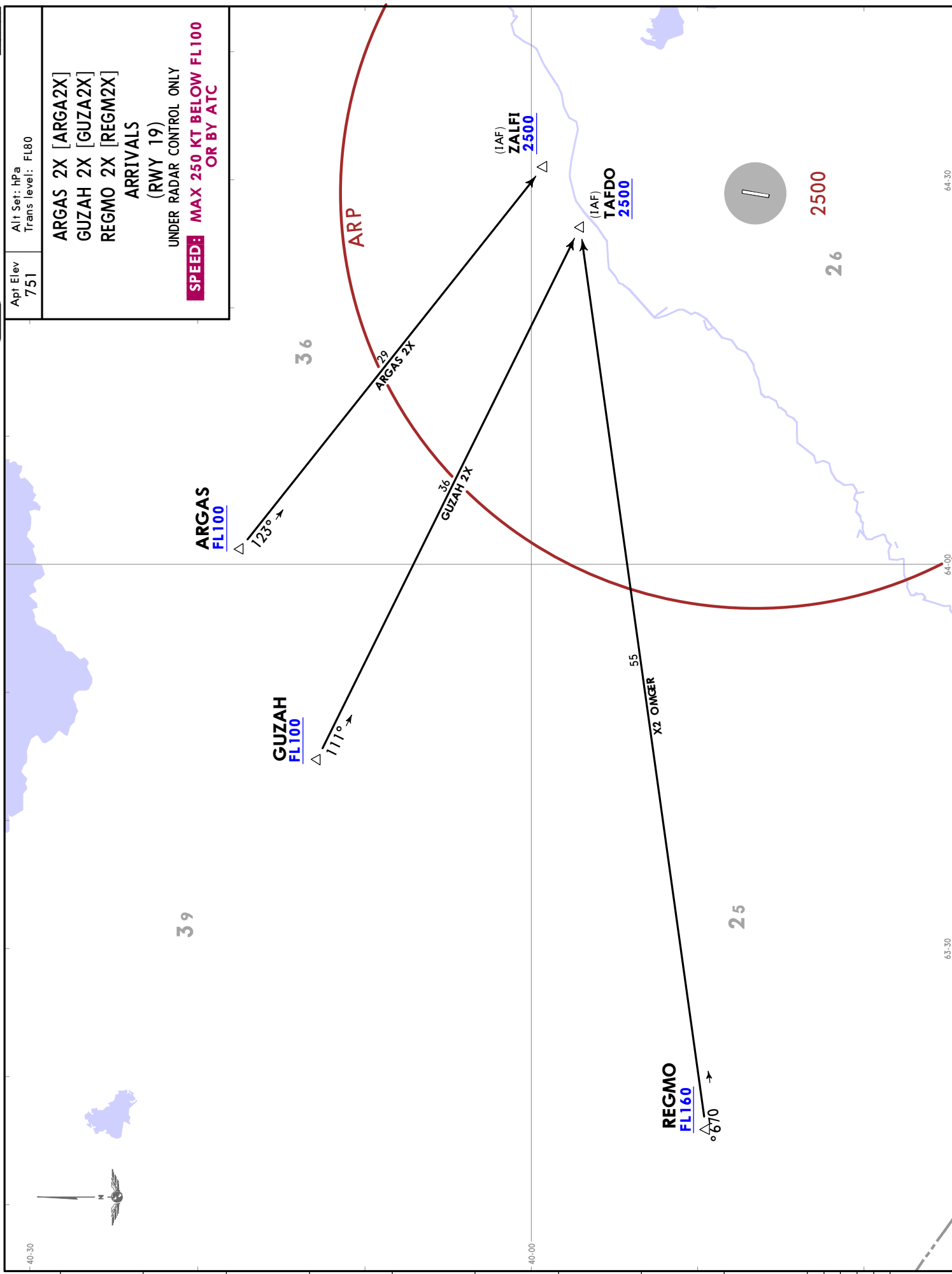
Apt Elev 751	Alt Set: hPa Trans level: FL80
ARGAS 2W [ARGA2W] GUZAH 2W [GUZA2W] REGMO 2W [REGM2W] ARRIVALS (RWY 19)	
SPEED: MAX 250 KT BELOW FL100 OR BY ATC	



UTSB/BHK BUKHARA, UZBEKISTAN
JEPPESEN 27 AUG 21 10-2J Eff 9 Sep STAR

Alt Elev 751
Trans level: FL80

ARGAS 2X [ARGA2X]
GUZAH 2X [GUZA2X]
REGMO 2X [REGM2X]
ARRIVALS
(RWY 19)
UNDER RADAR CONTROL ONLY
SPEED: MAX 250 KT BELOW FL100 OR BY ATC



BUKHARA, UZBEKISTAN

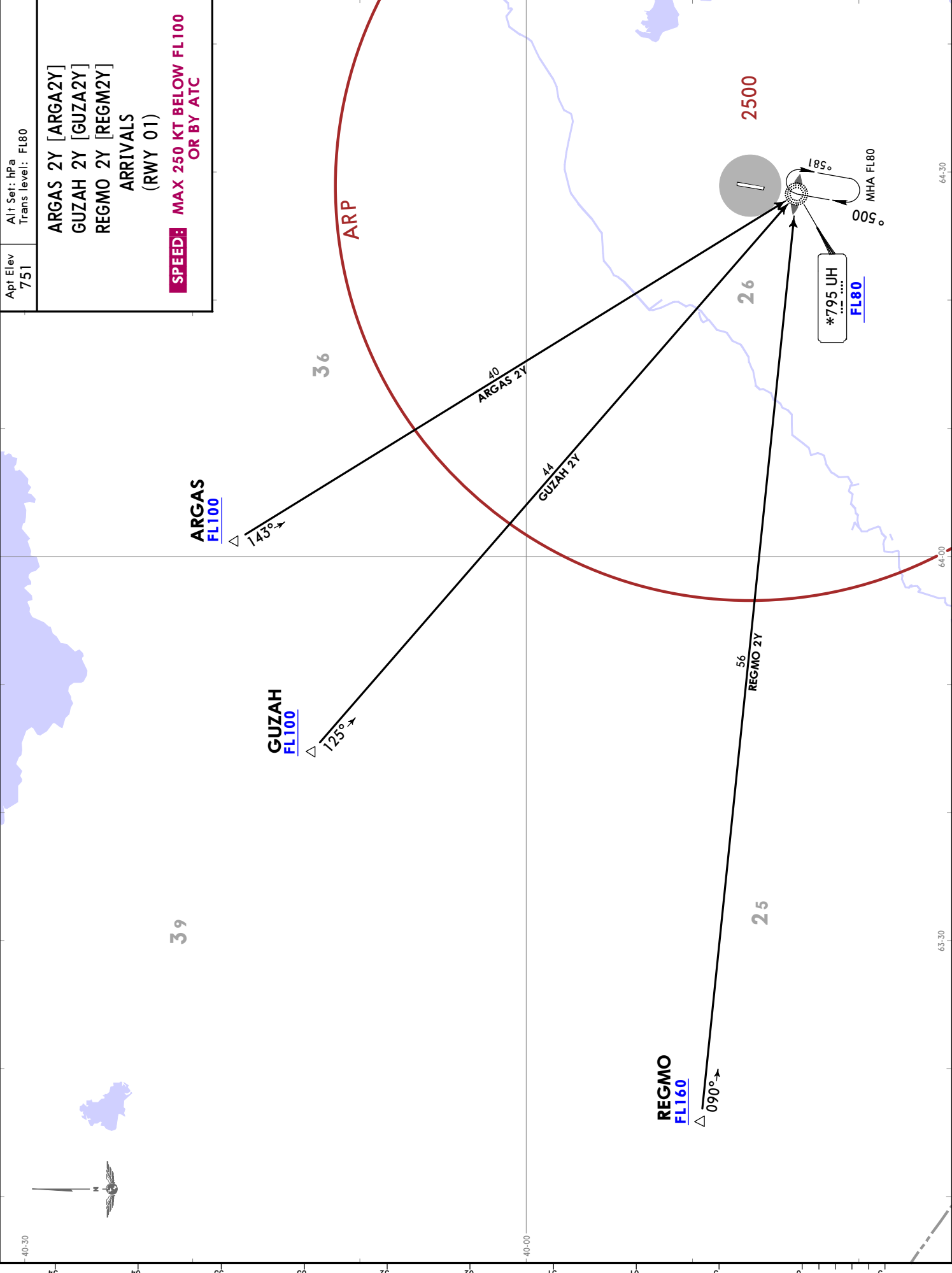
STAR

UTSB/BHK
BUKHARA

JEPPESEN
27 AUG 21
Eff 9 Sep

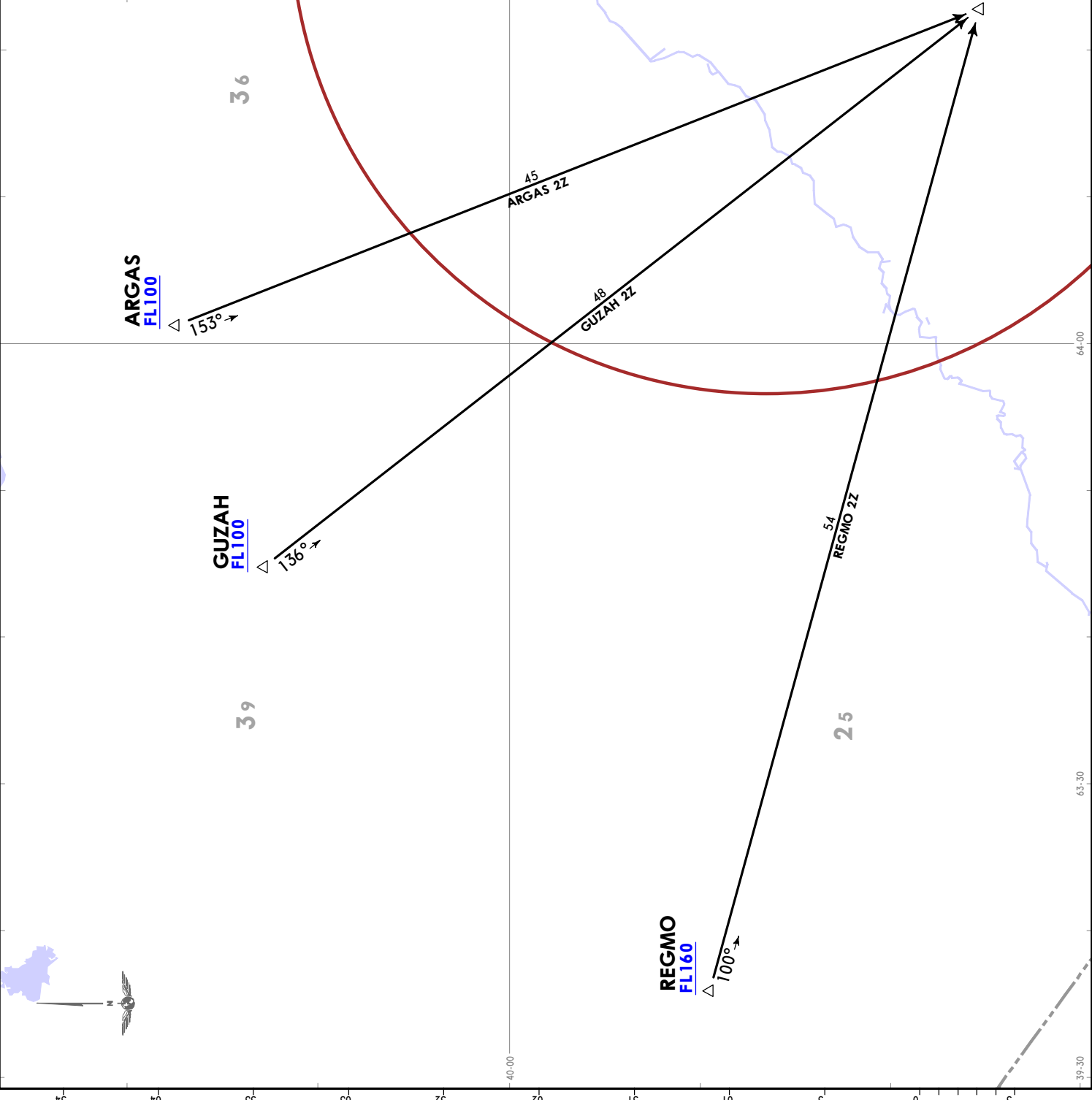
10-2K

Apt Elev 751	Alt Set: hPa Trans level: FL80
ARGAS 2Y [ARGA2Y] GUZAH 2Y [GUZA2Y] REGMO 2Y [REGM2Y] ARRIVALS (RWY 01)	
SPEED: MAX 250 KT BELOW FL100 OR BY ATC	



UTSB/BHK BUKHARA, UZBEKISTAN
JEPPESEN 27 AUG 21 10-2L Eff 9 Sep STAR

Apt Elev 751	Alt Set: hPa Trans level: FL80
ARGAS 2Z [ARGA2Z] GUZAH 2Z [GUZA2Z] REGMO 2Z [REGM2Z] ARRIVALS (RWY 01) UNDER RADAR CONTROL ONLY SPEED: MAX 250 KT BELOW FL100 OR BY ATC	

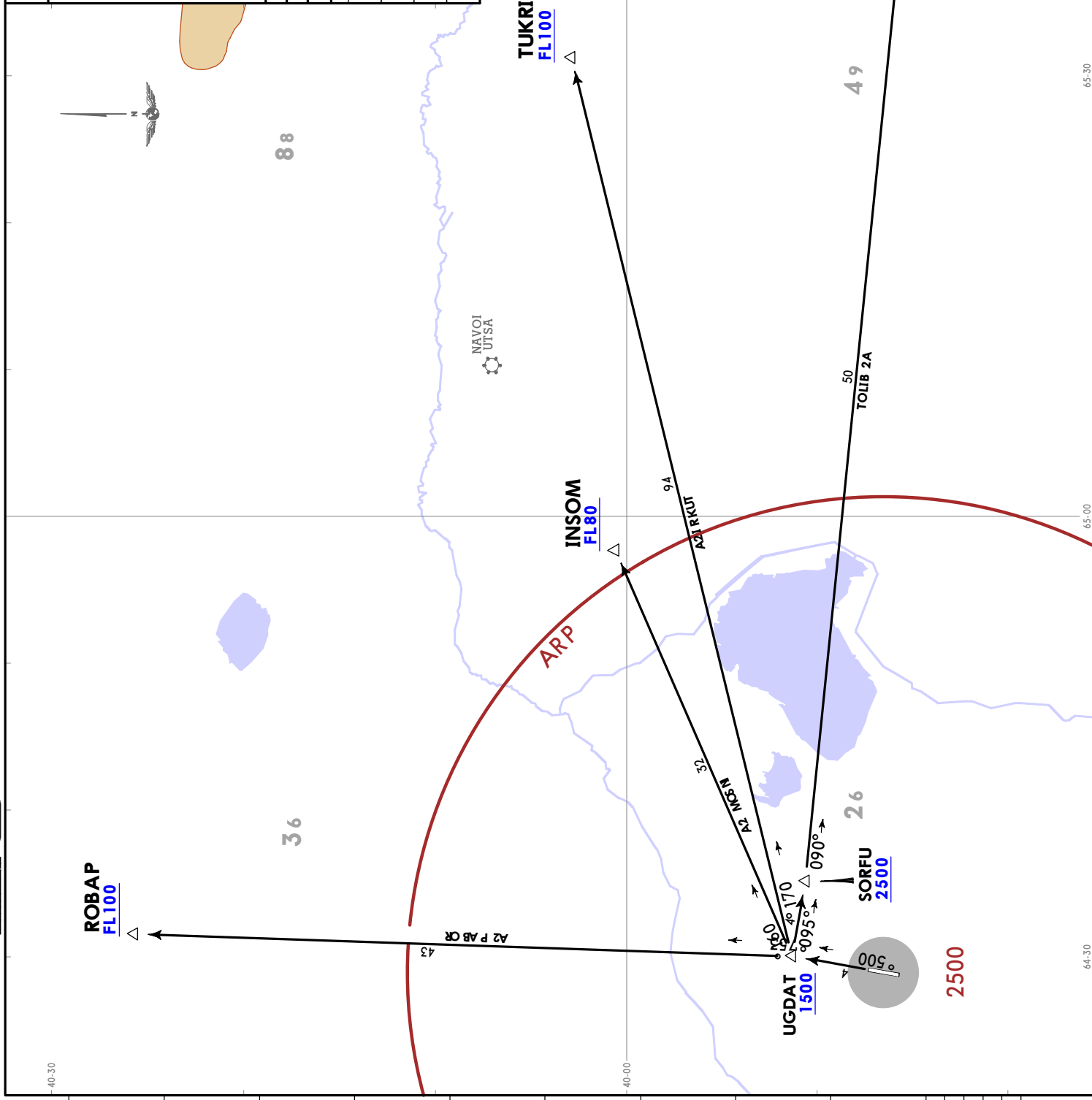


BUKHARA, UZBEKISTAN

JEPPESEN
27 AUG 21
Eff 9 Sep
10-3

UTSB/BHK
BUKHARA

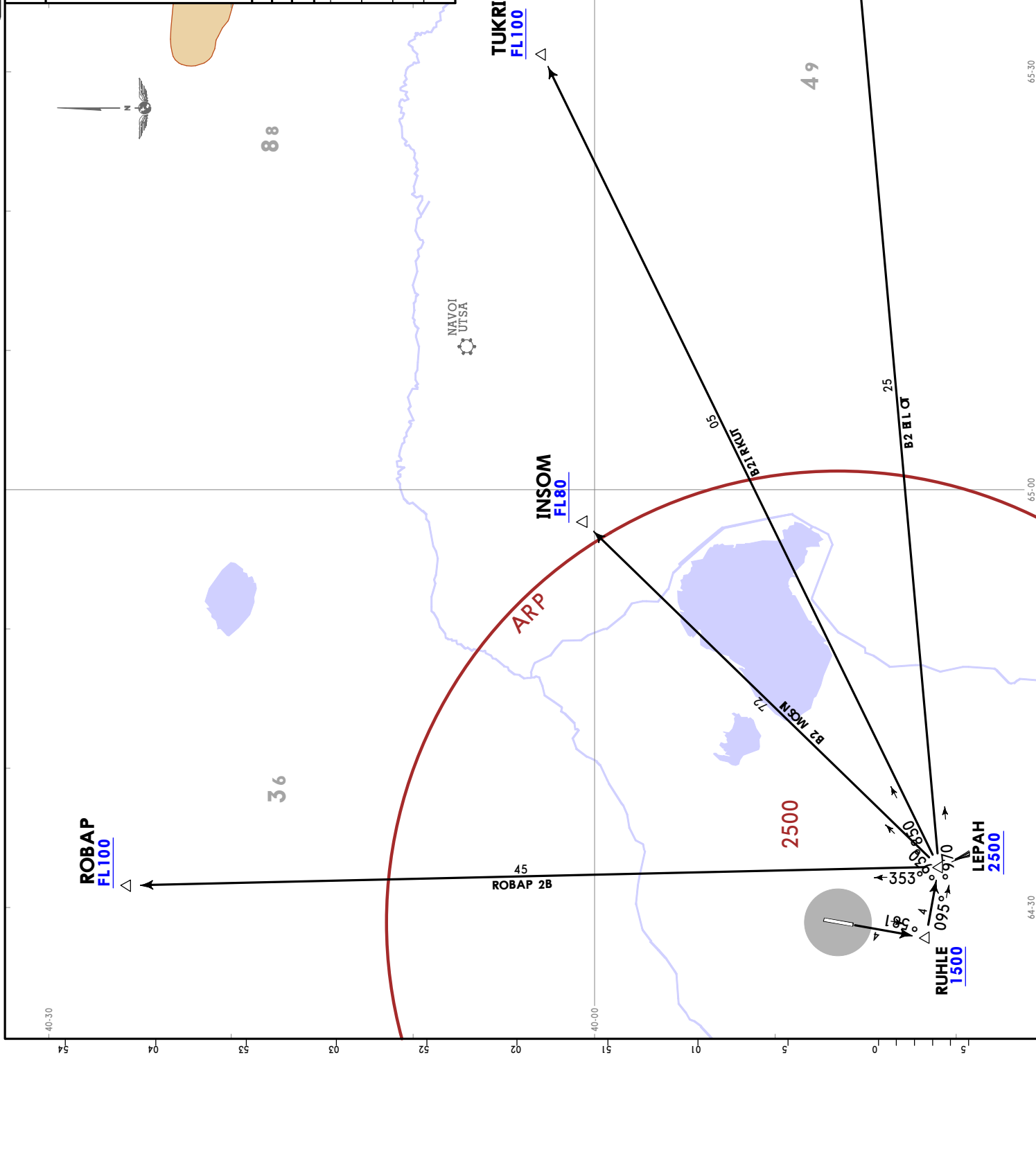
Apt Elev 751	Trans alt: 6000
INSOM 2A [INSO2A] ROBAP 2A [ROBA2A] TOLIB 2A [TOLI2A] TUKRI 2A [TUKR2A] DEPARTURES (RWY 01) SPEED: MAX 250 KT BELOW FL100 OR BY ATC	
Initial climb clearance FL80 or by ATC INITIAL CLIMB Climb on 005° track to UGDAT.	
SID ROUTING INSOM 2A From UGDAT, 061° track to INSOM. ROBAP 2A From UGDAT, 357° track to ROBAP. TOLIB 2A From UGDAT, 095° track to SORFU, turn LEFT, 090° track to TOLIB. TUKRI 2A From UGDAT, 071° track to TUKRI.	



JEPPESEN
 27 AUG 21 (10-3A) Eff 9 Sep
UTSB/BHK
 BUKHARA

BUKHARA, UZBEKISTAN
SID

Apt Elev 751	Trans alt: 6000
INSOM 2B [INSO2B] ROBAP 2B [ROBA2B] TOLIB 2B [TOLI2B] TUKRI 2B [TUKR2B] DEPARTURES (RWY 19) SPEED: MAX 250 KT BELOW FL100 OR BY ATC	
Initial climb clearance FL80 or by ATC INITIAL CLIMB Climb on 185° track to RUHLE.	
SID ROUTING From RUHLE, 095° track to LEPAH, turn LEFT, 039° track to INSOM.	
From RUHLE, 095° track to LEPAH, turn LEFT, 353° track to ROBAP.	
From RUHLE, 095° track to LEPAH, turn LEFT, 079° track to TOLIB.	
From RUHLE, 095° track to LEPAH, turn LEFT, 058° track to TUKRI.	

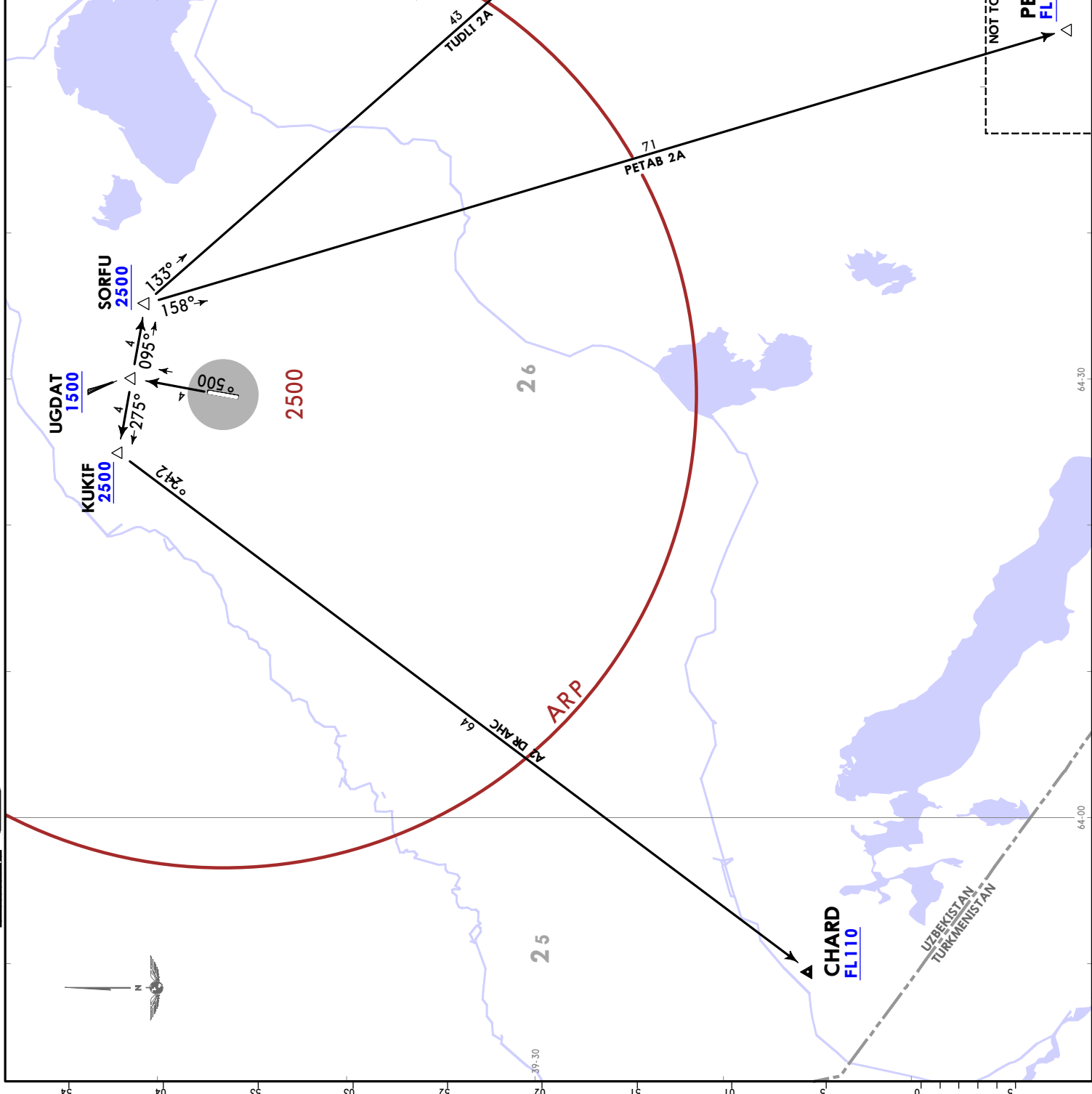


BUKHARA, UZBEKISTAN

UTSB/BHK
BUKHARA

JEPPESEN
27 AUG 21
Eff 9 Sep 10-3B

Apt Elev 751	Trans alt: 6000
CHARD 2A [CHAR2A] PETAB 2A [PETA2A] TUDLI 2A [TUDL2A] DEPARTURES (RWY 01)	
SPEED: MAX 250 KT BELOW FL100 OR BY ATC	
Initial climb clearance FL80 or by ATC	
INITIAL CLIMB	
Climb on 005° track to UGDAT.	
ROUTING	
CHARD 2A	From UGDAT, 275° track to KUKIF, turn LEFT, 212° track to CHARD.
PETAB 2A	From UGDAT, 095° track to SORFU, turn RIGHT, 158° track to PETAB.
TUDLI 2A	From UGDAT, 095° track to SORFU, turn RIGHT, 133° track to TUDLI.



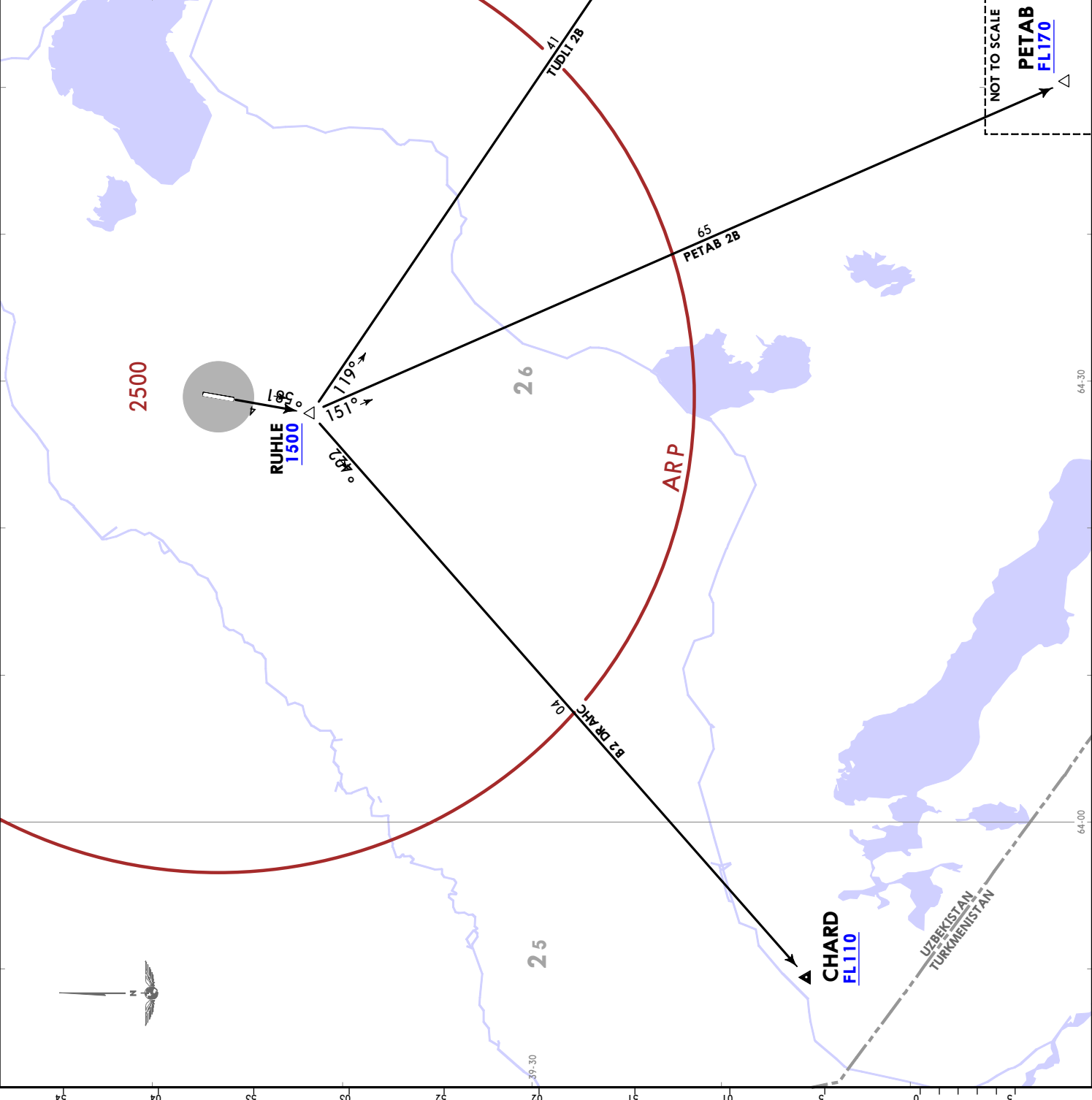
JEYPESEN
 27 AUG 21 10-3C Eff 9 Sep

UTSB/BHK
 BUKHARA

BUKHARA, UZBEKISTAN

SID

Apt Elev 751	Trans alt: 6000
CHARD 2B [CHAR2B] PETAB 2B [PETA2B] TUDLI 2B [TUDL2B] DEPARTURES (RWY 19)	
SPEED: MAX 250 KT BELOW FL100 OR BY ATC	
Initial climb clearance FL80 or by ATC	
INITIAL CLIMB	
Climb on 185° track to RUHLE.	
SID	
ROUTING	
CHARD 2B From RUHLE, 224° track to CHARD.	
PETAB 2B From RUHLE, 151° track to PETAB.	
TUDLI 2B From RUHLE, 119° track to TUDLI.	

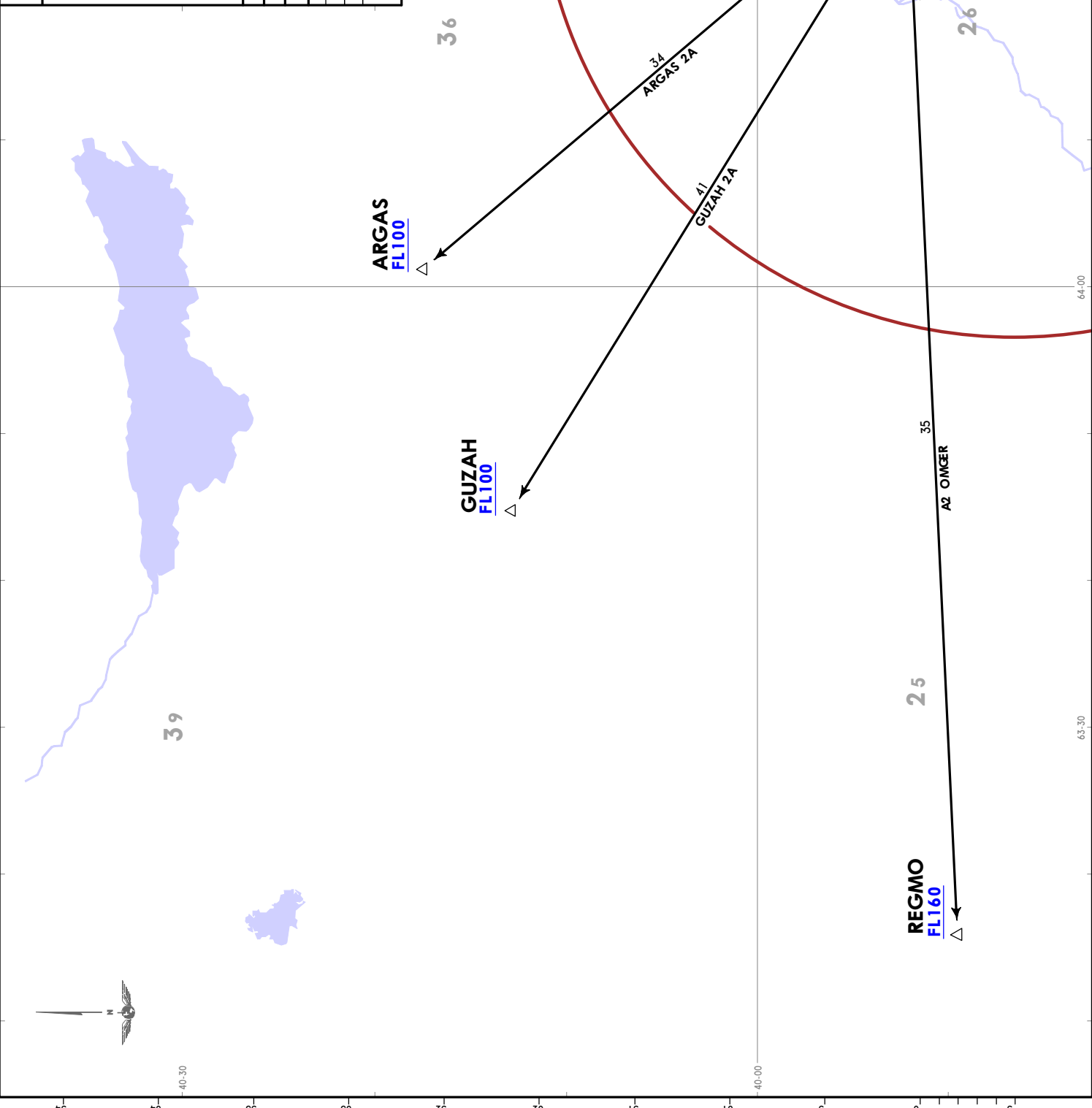


BUKHARA, UZBEKISTAN

UTSB/BHK
BUKHARA

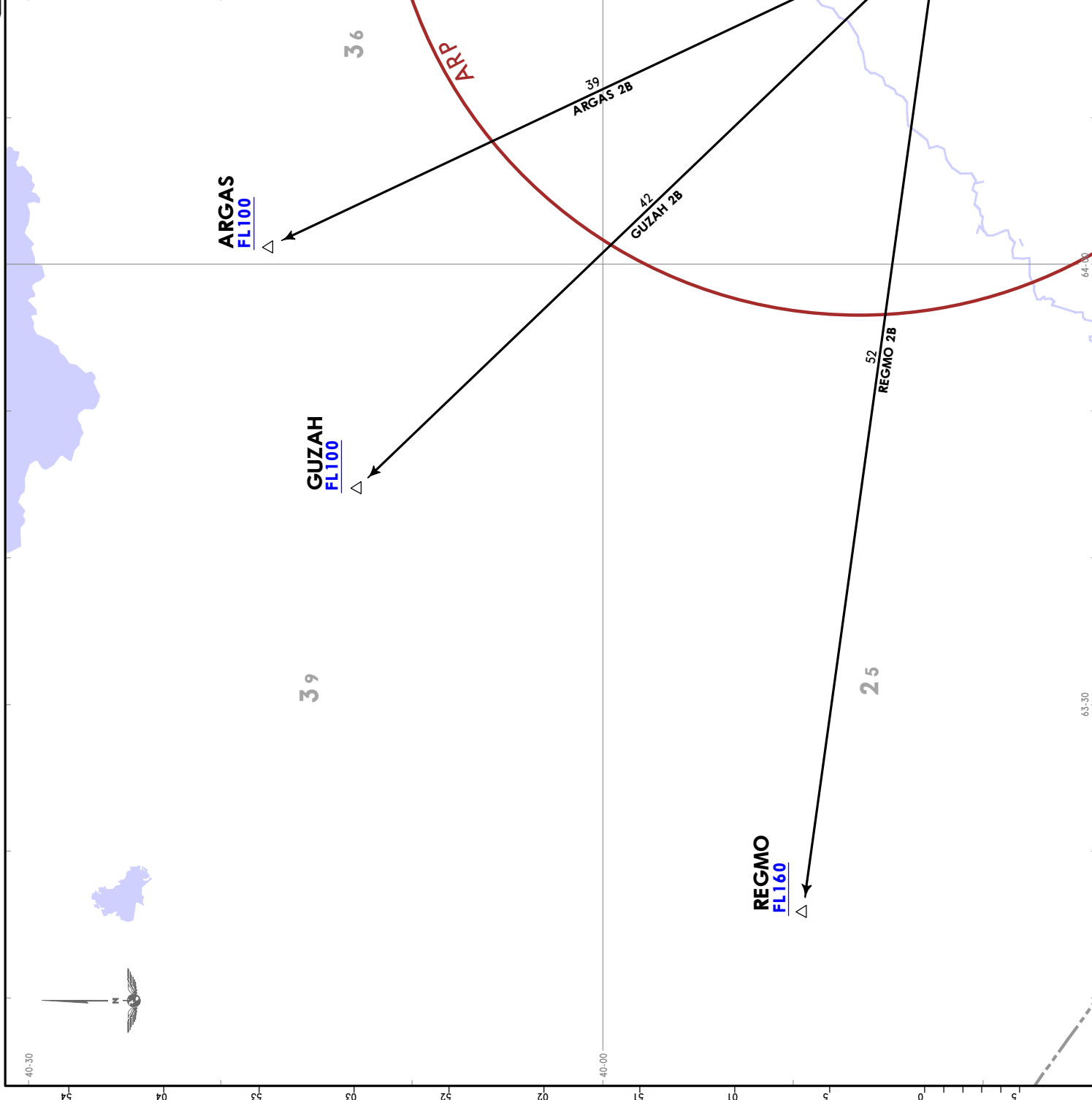
JEPPESEN
9 JUL 21
EFF 15 JUL 10-3D

Apt Elev 751	Trans alt: 6000
ARGAS 2A [ARGA2A] GUZAH 2A [GUZA2A] REGMO 2A [REGM2A] DEPARTURES (RWY 01)	
SPEED: MAX 250 KT BELOW FL100 OR BY ATC	
Initial climb clearance FL80 or by ATC	
INITIAL CLIMB	
Climb on 005° track to UGDAT.	
SID	
ROUTING	
ARGAS 2A	From UGDAT, 315° track to ARGAS.
GUZAH 2A	From UGDAT, 297° track to GUZAH.
REGMO 2A	From UGDAT, 275° track to KUKIF, turn LEFT, 262° track to REGMO.



JEPPESEN
 9 JUL 21 10-3E Eff 15 Jul
BUKHARA, UZBEKISTAN
UTSB/BHK
BUKHARA

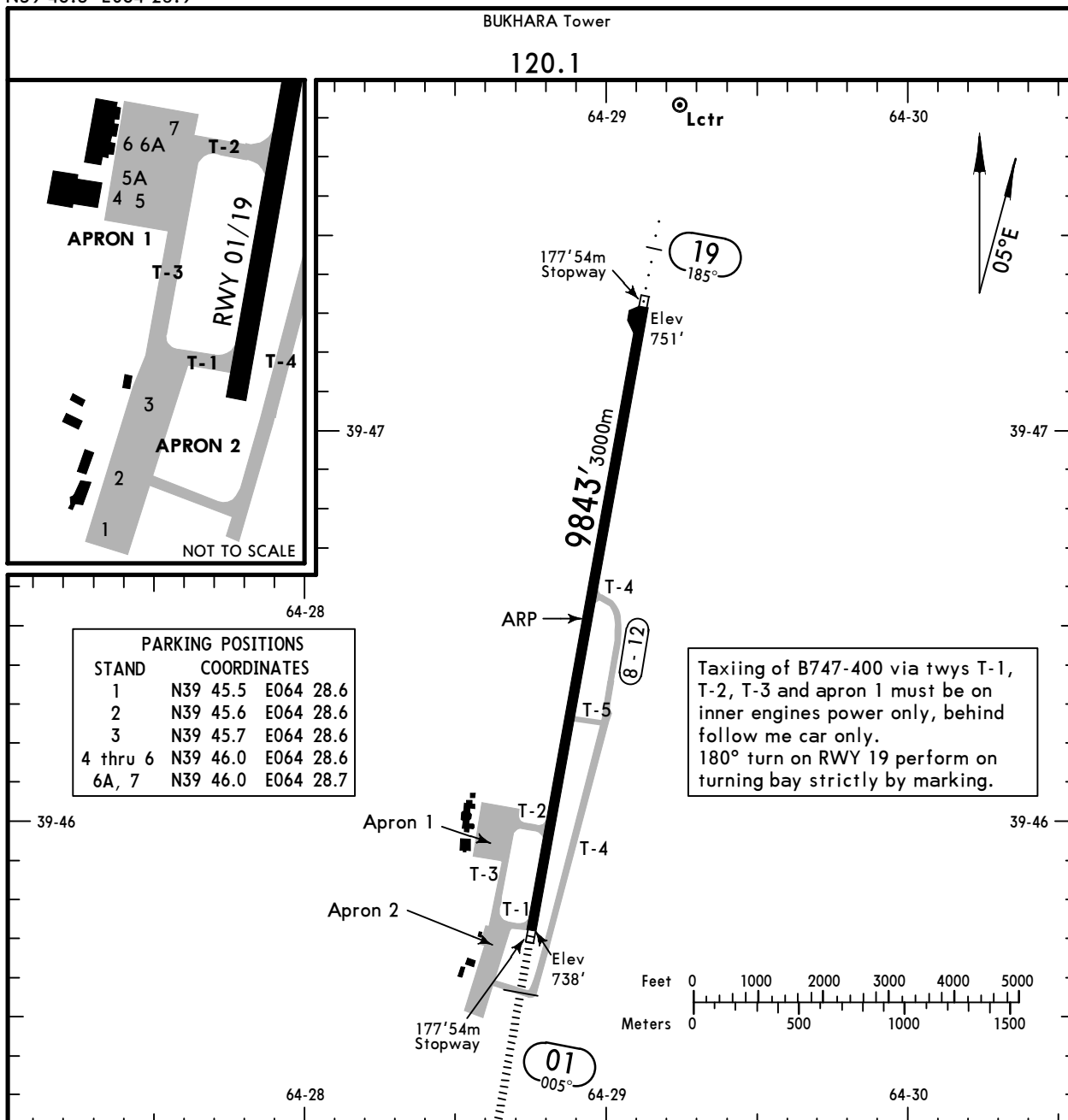
Apt Elev 751	Trans alt: 6000
ARGAS 2B [ARGA2B] GUZAH 2B [GUZA2B] REGMO 2B [REGM2B] DEPARTURES (RWY 19)	
SPEED: MAX 250 KT BELOW FL100 OR BY ATC	
Initial climb clearance FL80 or by ATC	
INITIAL CLIMB	
Climb on 185° track to RUHLE.	
SID ROUTING	
ARGAS 2B	From RUHLE, 275° track to JOHAF, turn RIGHT, 330° track to ARGAS.
GUZAH 2B	From RUHLE, 275° track to JOHAF, turn RIGHT, 311° track to GUZAH.
REGMO 2B	From RUHLE, 275° track to JOHAF, turn RIGHT, 273° track to REGMO.



UTSB/BHK
 Apt Elev **751'**
 N39 46.5 E064 28.9

JEPPesen
 9 DEC 22 **(10-9)**

BUKHARA, UZBEKISTAN
BUKHARA INTL



STAND	COORDINATES
1	N39 45.5 E064 28.6
2	N39 45.6 E064 28.6
3	N39 45.7 E064 28.6
4 thru 6	N39 46.0 E064 28.6
6A, 7	N39 46.0 E064 28.7

ADDITIONAL RUNWAY INFORMATION

RWY	USABLE LENGTHS			TAKE-OFF	WIDTH
	HIRL (60m)	MIALS	PAPI-L (angle 3.0°)		
01	HIRL (60m)	MIALS	PAPI-L (angle 3.0°)	1	148' 45m
19	HIRL (60m)	MIALS	PAPI-L (angle 3.0°)		

1 TAKE-OFF RUN AVAILABLE

RWY 01:	RWY 19:
From rwy head 9843'(3000m)	From rwy head 9843'(3000m)
twy T-2 int 8202'(2500m)	twy T-4 int 5249'(1600m)
twy T-5 int 6562'(2000m)	
twy T-4 int 4593'(1400m)	

State	TAKE-OFF		
	RL & RCLM	RL or RCLM	RCLM (DAY only)
A	DAY	NIGHT	R/V500m
B	R/V250m		
C	R/V300m		
D	R/V300m		

UTSB/BHK



EASA AIR OPS
BUKHARA, UZBEKISTAN
 BUKHARA INTL

STRAIGHT-IN RWY		A	B	C	D
01	ILS	938' (200')	938' (200')	955' (217')	955' (217')
		750m	750m	750m	750m
	ALS out	1200m	1200m	1200m	1200m
	LOC	NOT AUTH	NOT AUTH	NOT AUTH	NOT AUTH
	① 2 NDB	1160' (422')	1160' (422')	1160' (422')	1160' (422')
		1900m	1900m	2100m	2100m
19	① 2 NDB	1110' (359')	1110' (359')	1110' (359')	1110' (359')
		1800m	1800m	2000m	2000m
	① NDB	1580' (829')	1580' (829')	1580' (829')	1580' (829')
		4500m	4500m	4700m	4700m

① Continuous Descent Final Approach.

CIRCLE-TO-LAND ②	100 KT	135 KT	180 KT	205 KT
	1900' (1149')	1900' (1149')	1900' (1149')	1900' (1149')
	ceil 2300' - V10.0km	ceil 2300' - V10.0km	ceil 2300' - V10.0km	ceil 2300' - V10.0km

② NIGHT not authorized.

TAKE-OFF

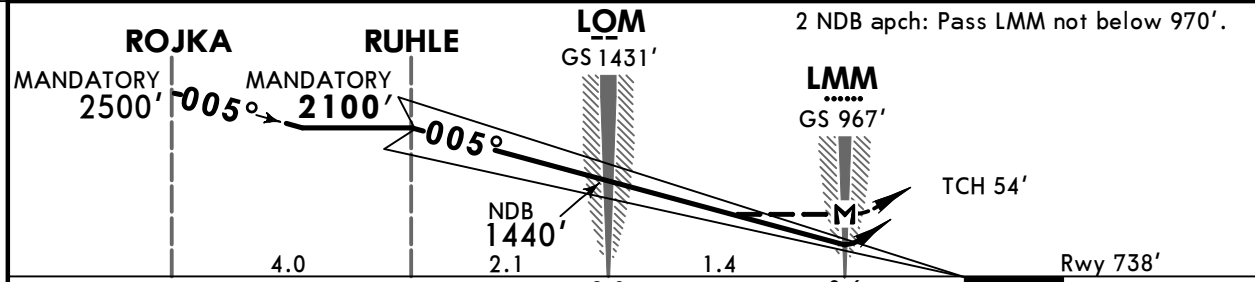
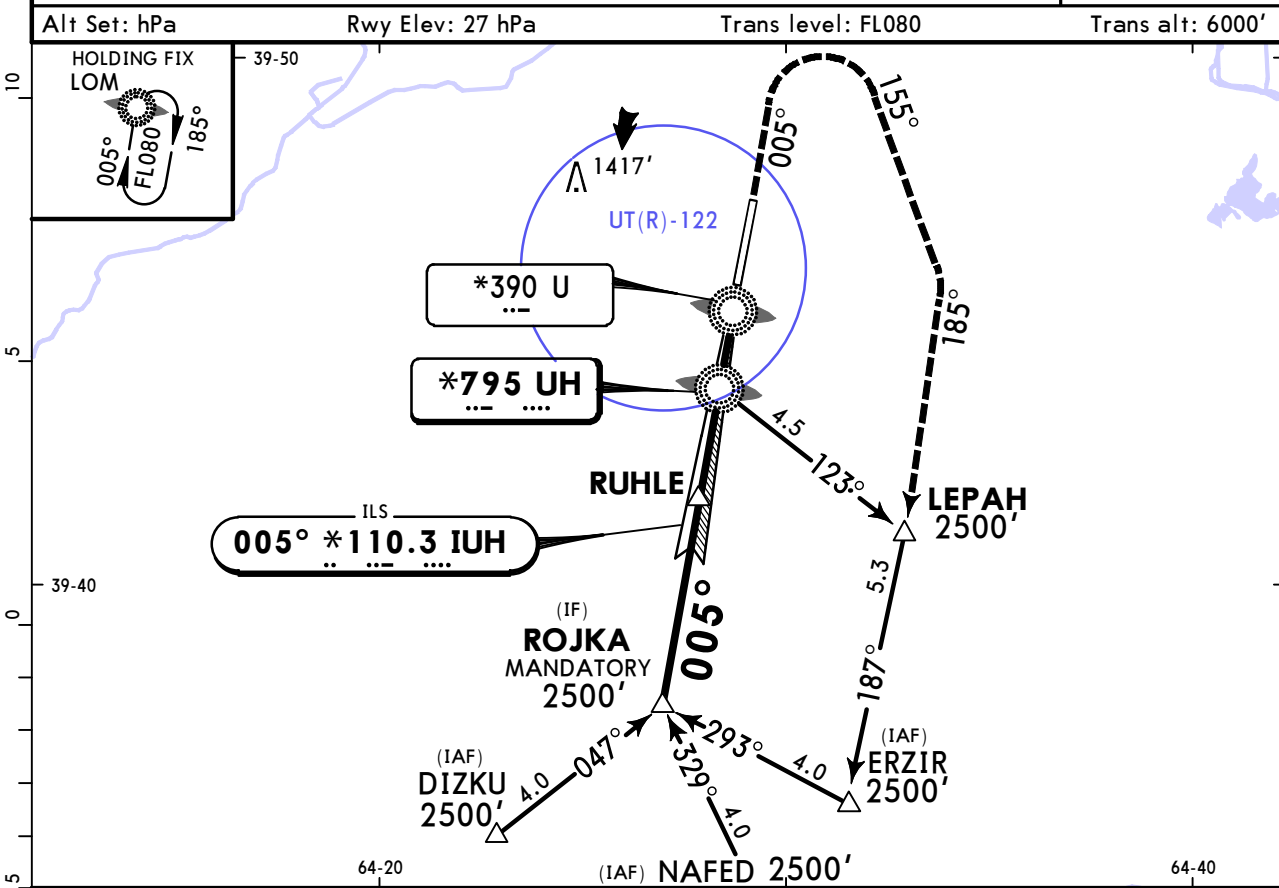
	RL & RCLM		RL or RCLM	RCLM (DAY only)
	DAY	NIGHT	DAY	
A	R/V250m			R/V500m
B				
C	R/V300m			
D				

UTSB/BHK
BUKHARA INTL



BUKHARA, UZBEKISTAN
ILS or 2 NDB Rwy 01

BUKHARA Approach			BUKHARA Tower		
124.6			120.1		
LOC IUH *110.3	Final Apch Crs 005°	RUHLE MANDATORY 2100' (1362')	ILS DA(H) Refer to Minimums	Apt Elev 751' Rwy 738'	2500 MSA ARP
NDB UH *795			2 NDB MDA(H) 1160' (422')		
MISSED APCH: Climb on 005°. Crossing 1500', turn RIGHT onto 155° to 185° to LEPAH climbing to 2500', then according to chart, or as directed.					
Alt Set: hPa			Rwy Elev: 27 hPa	Trans level: FL080	



Gnd speed-Kts	70	90	100	120	140	160	HIALS PAPI 1500' on 005° 155° ↑ RT
ILS GS or NDB Descent Angle	3.00°	372	478	531	637	743	
MAP at LMM							

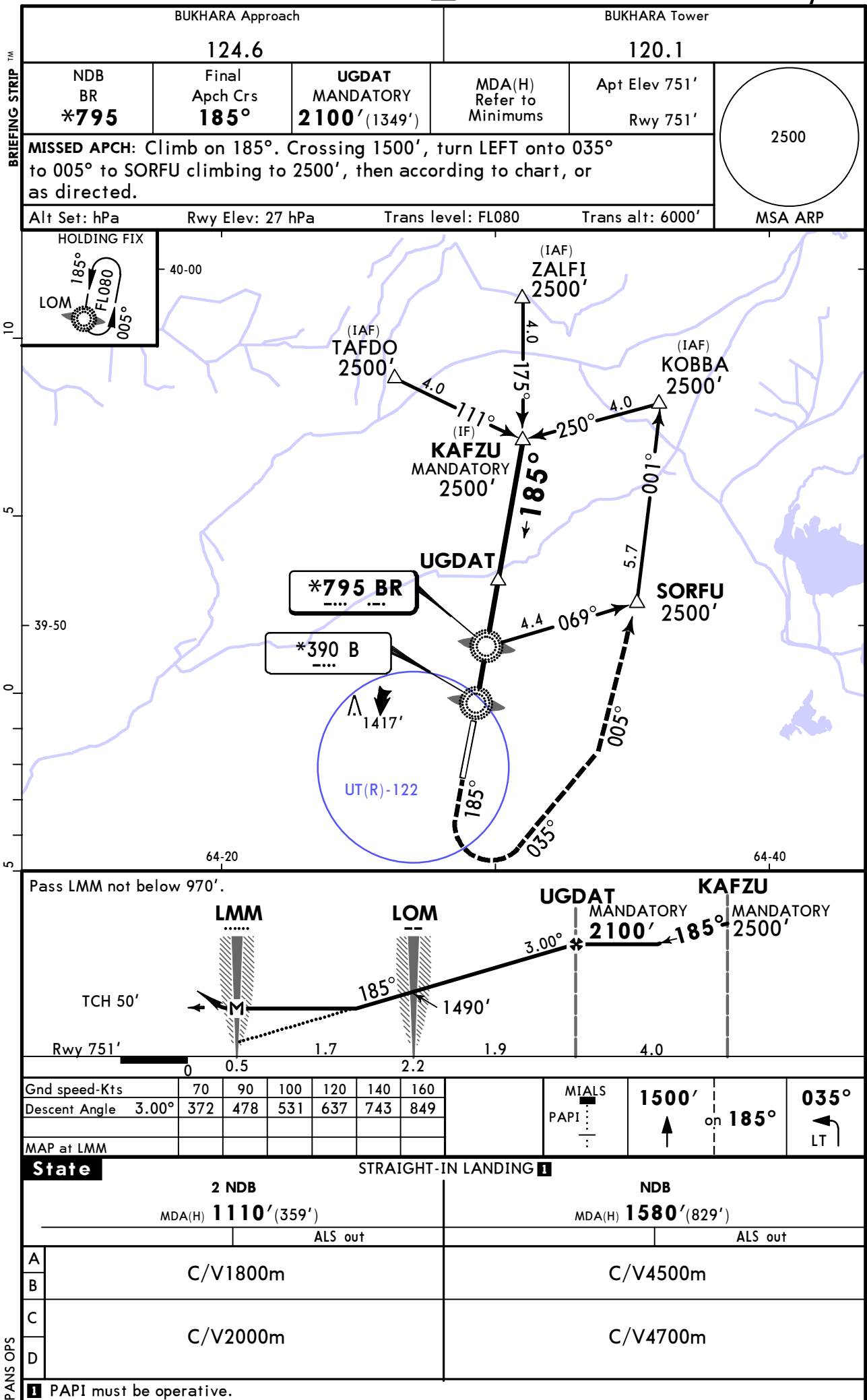
PANS OPS	State				STRAIGHT-IN LANDING			
	ILS		2 NDB		ILS		2 NDB	
	DA(H) AB: 938'(200') CD: 955'(217')		MDA(H) 1160'(422')		DA(H) AB: 938'(200') CD: 955'(217')		MDA(H) 1160'(422')	
	FULL		ALS out		FULL		ALS out	
A	R/V750m		R/V1200m		R/V1900m		R/V2000m	
B	R/V750m		R/V1200m		R/V2100m			
C	R/V750m		R/V1200m		R/V2100m			
D	R/V750m		R/V1200m		R/V2100m			

UTSB/BHK
BUKHARA INTL



BUKHARA, UZBEKISTAN
2 NDB or NDB Rwy 19

9 DEC 22 (16-1)

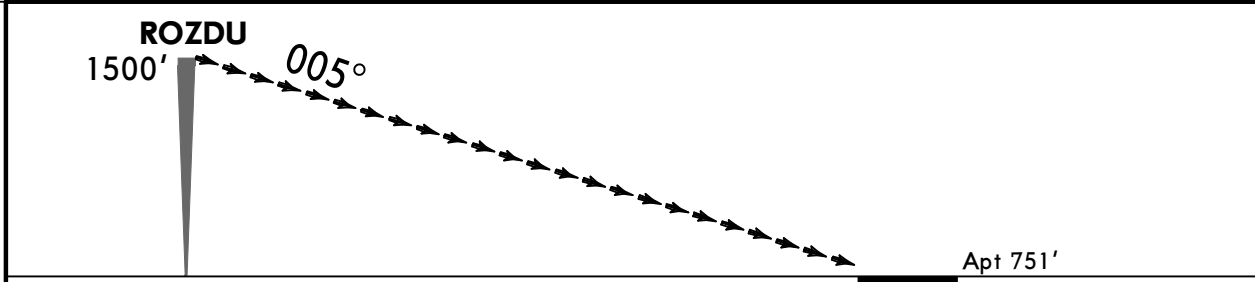
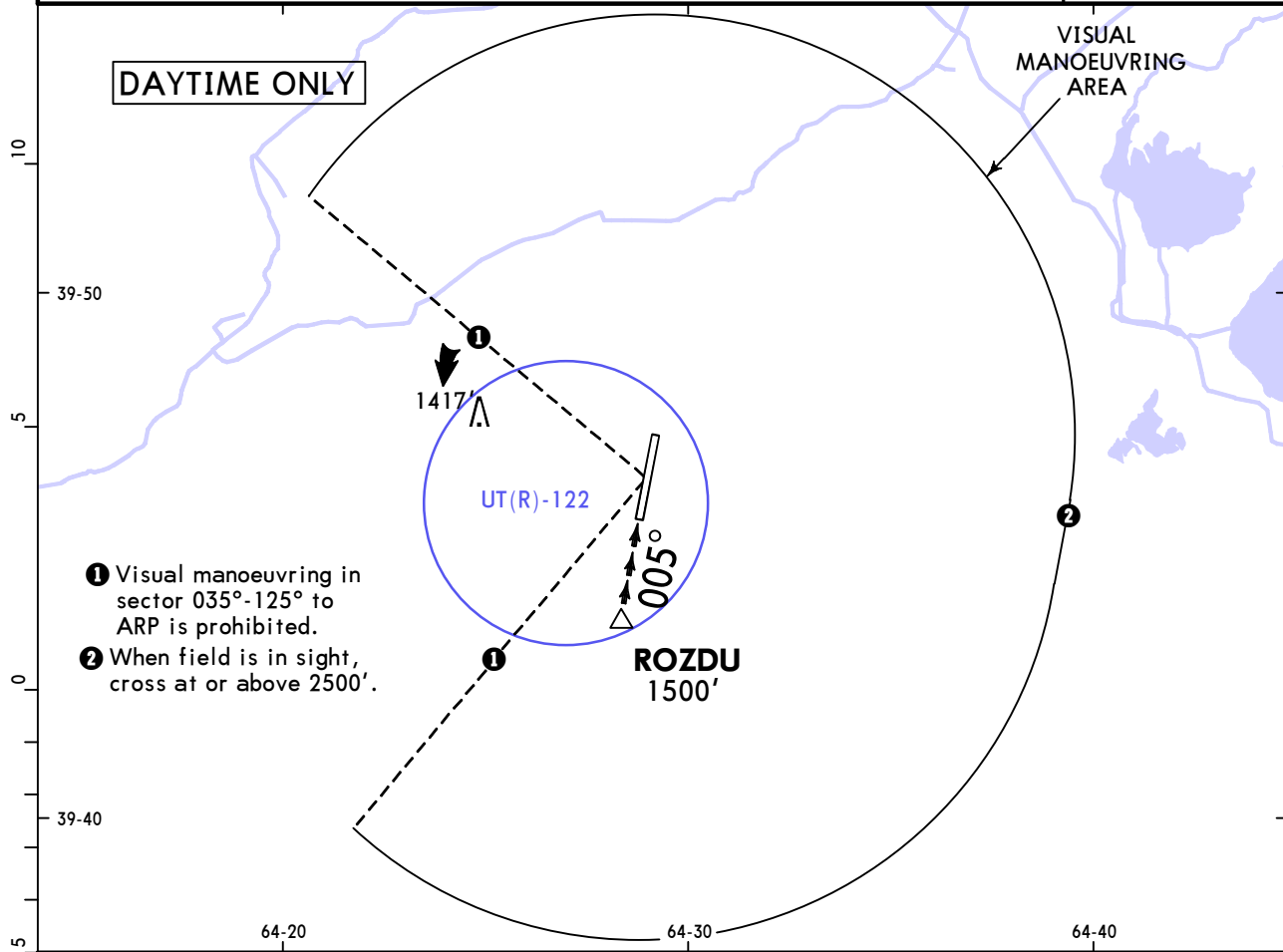


UTSB/BHK
BUKHARA INTL

JEPPESEN
 9 DEC 22 **(19-10)**

BUKHARA, UZBEKISTAN
Circling Rwy 01

BUKHARA Approach			BUKHARA Tower		
124.6			120.1		
VISUAL	Final Apch Crs 005°	No FAF	MDA(H) 1900' (1149')	Apt Elev 751'	2500
MISSED APCH: Climb on RWY hdg to 2100' and contact ATC.					
Alt Set: hPa		Apt Elev: 27 hPa	Trans level: FL080		Trans alt: 6000'
					MSA ARP



					HIALS	2100' on RWY hdg
					PAPI	

State LANDING **CEILING REQUIRED**

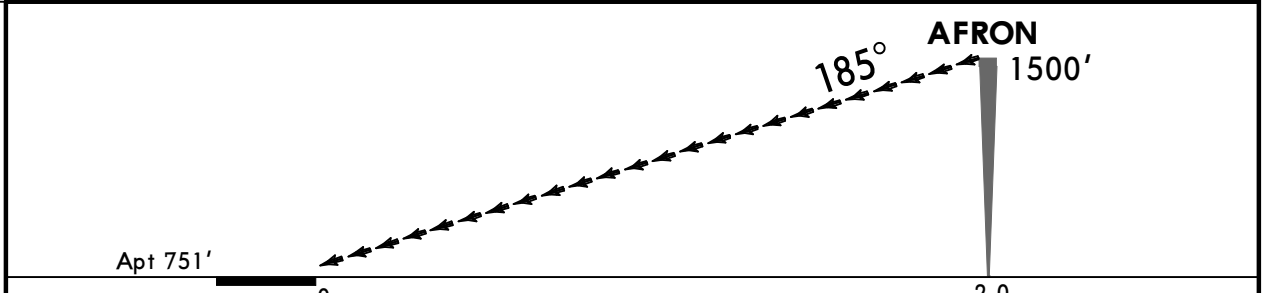
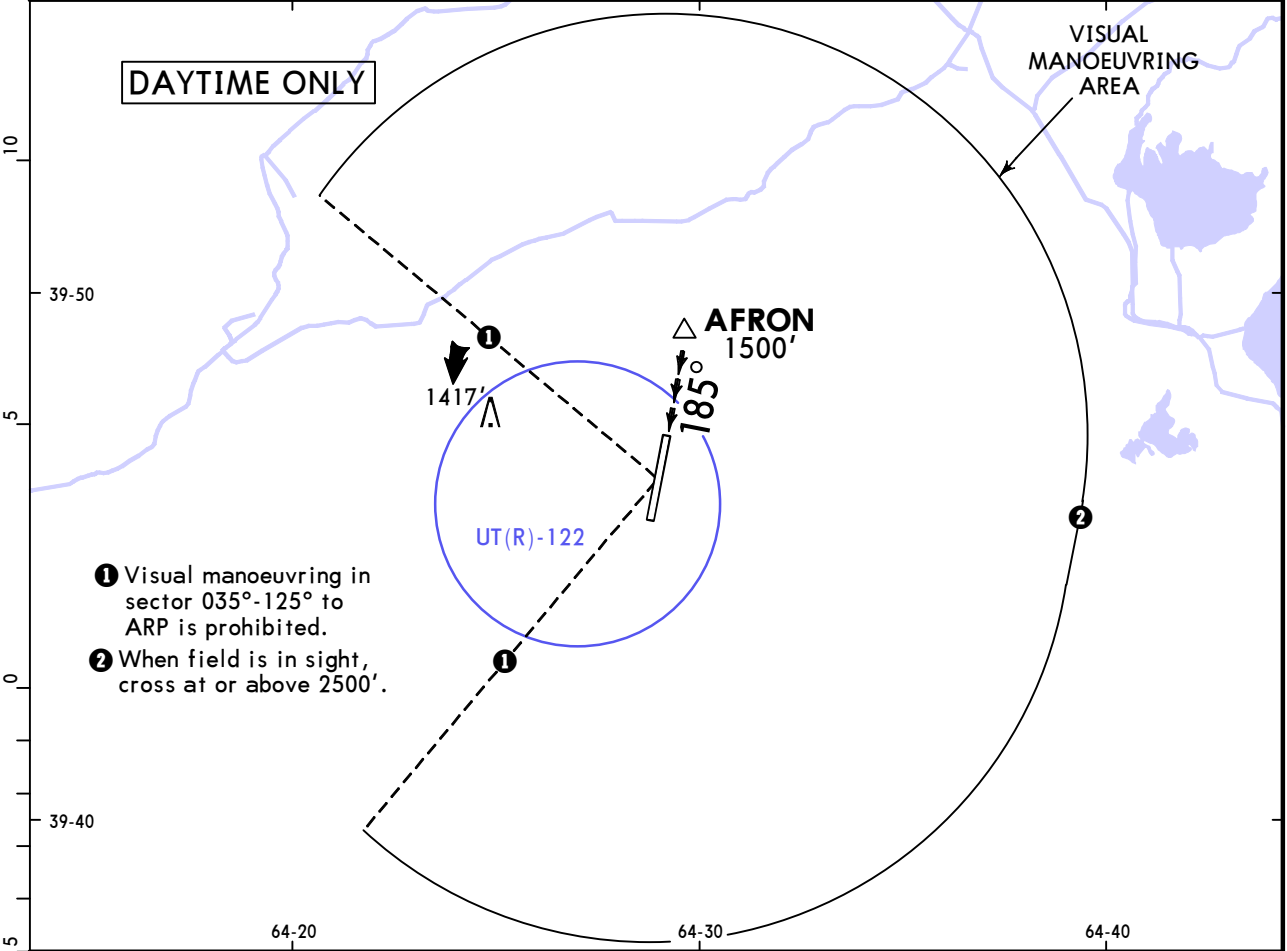
PANS OPS	Max Kts	MDA(H)	2300' - V10.0km
	A 100	1900' (1149')	
	B 135		
	C 180		
D 205			

UTSB/BHK
BUKHARA INTL

JEPPESEN
 9 DEC 22 **(19-11)**

BUKHARA, UZBEKISTAN
Circling Rwy 19

BUKHARA Approach			BUKHARA Tower		
124.6			120.1		
VISUAL	Final Apch Crs 185°	No FAF	MDA(H) 1900' (1149')	Apt Elev 751'	2500
MISSED APCH: Climb on RWY hdg to 2100' and contact ATC.					
Alt Set: hPa	Apt Elev: 27 hPa	Trans level: FL080	Trans alt: 6000'	MSA ARP	



					MIALS	2100' on RWY hdg
					PAPI	

State _____ **LANDING** _____ **CEILING REQUIRED** _____

PANS OPS	Max Kts	MDA(H)	
	A 100	1900' (1149')	2300'- V10.0km
	B 135		
	C 180		
	D 205		

CHANGES: Apt name.



Chart changes since cycle 04-2025

ADD = added chart, REV = revised chart, DEL = deleted chart.

ACT	PROCEDURE IDENT	INDEX	REV DATE	EFF DATE
-----	-----------------	-------	----------	----------

BUKHARA, (BUKHARA - UTSB)

TERMINAL CHART CHANGE NOTICES

No Chart Change Notices for Airport UTSB