

List of pages in this Trip Kit

Trip Kit Index
Airport Information For UTSK
Terminal Charts For UTSK
Revision Letter For Cycle 05-2025
Change Notices
Notebook

General Information

Location: KARSHI UZB
ICAO/IATA: UTSK / KSQ
Lat/Long: N38° 48.14', E065° 46.39'
Elevation: 1232 ft

Airport Use: Public
Daylight Savings: Not Observed
UTC Conversion: -5:00 = UTC
Magnetic Variation: 5.0° E

Fuel Types: Jet A-1
Repair Types: Minor Airframe, Minor Engine
Customs: Restricted
Airport Type: IFR
Landing Fee: Yes
Control Tower: Yes
Jet Start Unit: No
LLWS Alert: No
Beacon: No

Sunrise: 0031 Z
Sunset: 1456 Z

Runway Information

Runway: 16
Length x Width: 9268 ft x 148 ft
Surface Type: asphalt
TDZ-Elev: 1229 ft
Lighting: Edge, ALS

Runway: 34
Length x Width: 9268 ft x 148 ft
Surface Type: asphalt
TDZ-Elev: 1219 ft
Lighting: Edge, ALS
Displaced Threshold: 410 ft

Communication Information

Karshi Tower: 124.400
Karshi Tower: 120.300 Secondary

UTSK/KSQ
KARSHI

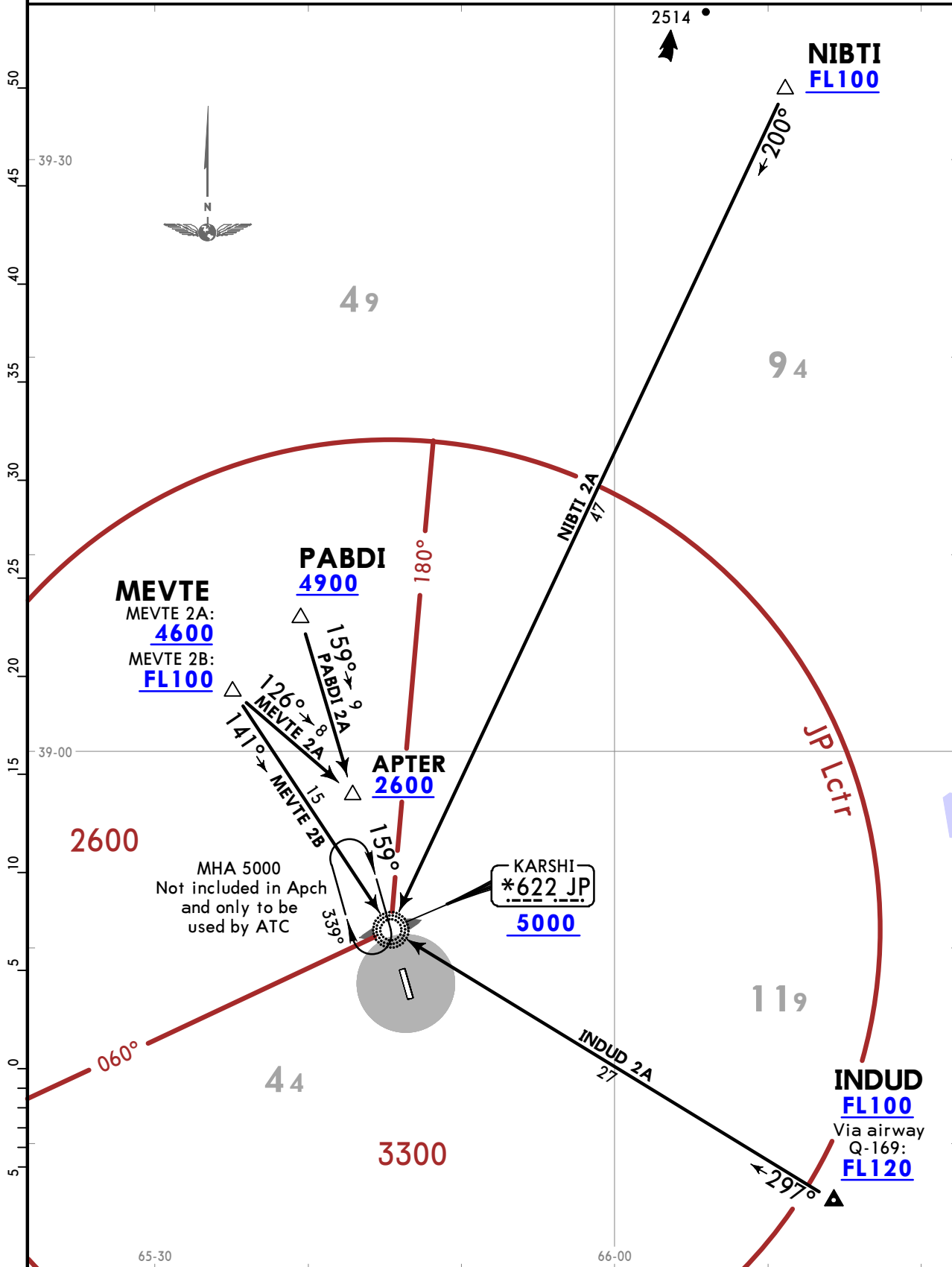
JEPPESEN
3 MAY 24 10-2 Eff 16 May

KARSHI, UZBEKISTAN
STAR

Apt Elev 1232
Alt Set: hPa
Trans level: FL080

INDUD 2A [INDU2A], MEVTE 2A [MEVT2A], MEVTE 2B [MEVT2B]
NIBTI 2A [NIBT2A], PABDI 2A [PABD2A]
ARRIVALS
(RWY 16)

SPEED: MAX 250 KT BELOW FL100 OR AS BY ATC



UTSK/KSQ KARSHI

JEPPESEN
3 MAY 24 (10-2A) Eff 16 May

KARSHI, UZBEKISTAN
STAR

Apt Elev
1232
Alt Set: hPa
Trans level: FL080

INDUD 2C [INDU2C], MEVTE 2C [MEVT2C]
MEVTE 2D [MEVT2D], NIBTI 2C [NIBT2C]
ARRIVALS
(RWY 34)

**SPEED: MAX 250 KT BELOW FL100
OR AS BY ATC**

**NIBTI
FL100**

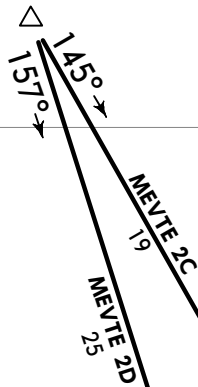
45
40
35
30
25
20
15
10
5
0
-5



JP Lctr

2600

**MEVTE
FL100**



49

180°

NIBTI 2C
50

1841

*622 JP

3300

K
MHA 5000
Not included in Apch
and only to be
used by ATC

***301 K
5000**

119

(NIBTI 2C,
MEVTE 2C only)
[D191G]
2600

(INDUD 2C, MEVTE 2D only)
[D190G]
(010° brg to K)
2600

INDUD 2C
13
159°
7
NIBTI 2C
190°
5
MEVTE 2C
2600
[FN34]

2600

[D165G]
(345° brg to K)
2600

INDUD 2C
24

**INDUD
FL100**
Via airway
Q-169:
FL120

66-00

UTSK/KSQ
KARSHI

JEPPESEN
3 MAY 24 10-3 Eff 16 May

KARSHI, UZBEKISTAN

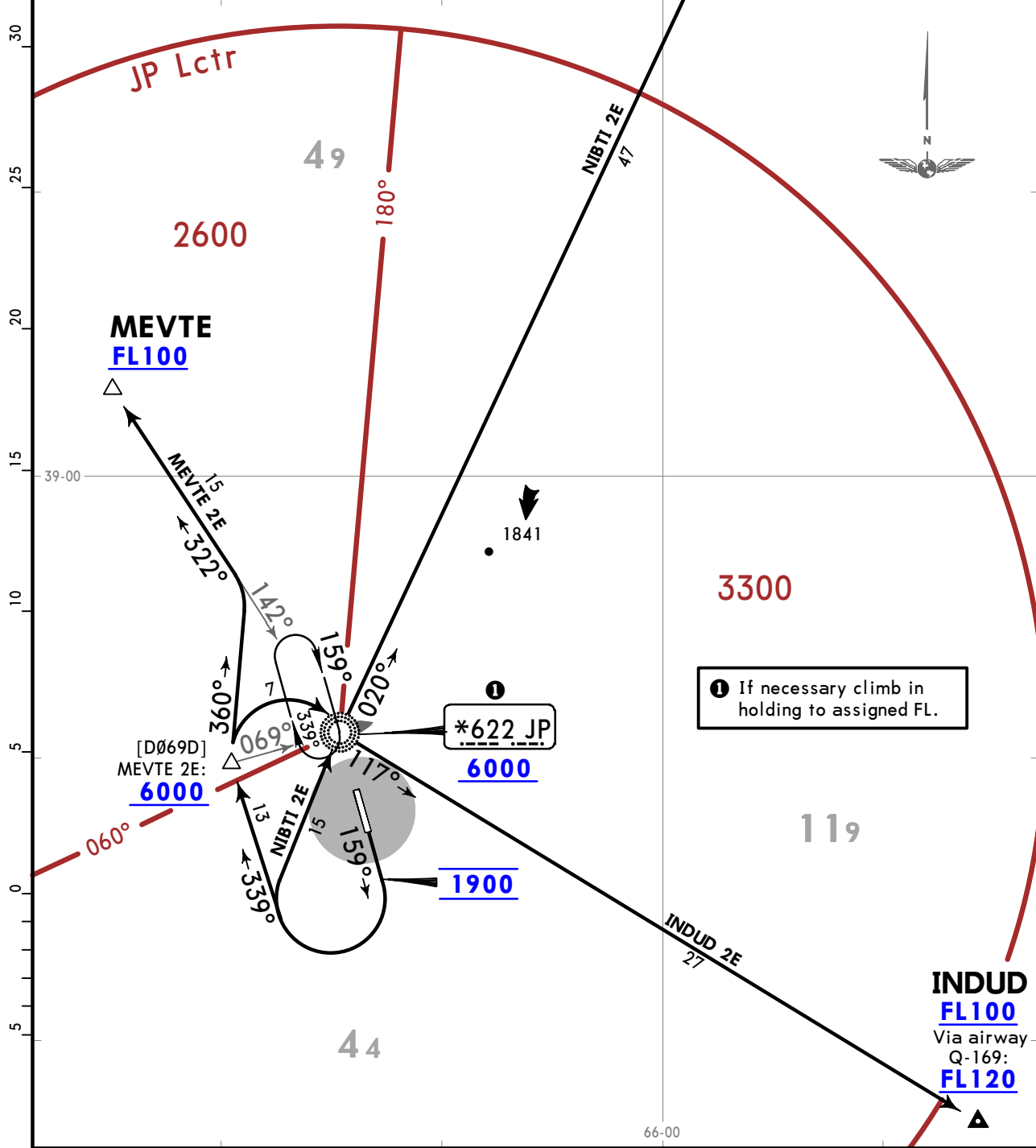
SID

Apt Elev 1232
Trans alt: 6000

INDUD 2E [INDU2E]
MEVTE 2E [MEVT2E], NIBTI 2E [NIBT2E]
DEPARTURES
(RWY 16)

**SPEED: MAX 250 KT BELOW FL100
OR AS BY ATC**

SID	ROUTING
INDUD 2E	Climb on 159° track to 1900, turn RIGHT, 339° track, at abeam JP turn RIGHT to JP, 117° bearing to INDUD.
MEVTE 2E	Climb on 159° track to 1900, turn RIGHT, 339° track, at abeam JP turn RIGHT, 360° track, intercept 322° bearing from JP to MEVTE.
NIBTI 2E	Climb on 159° track to 1900, turn RIGHT to JP, 020° bearing to NIBTI.

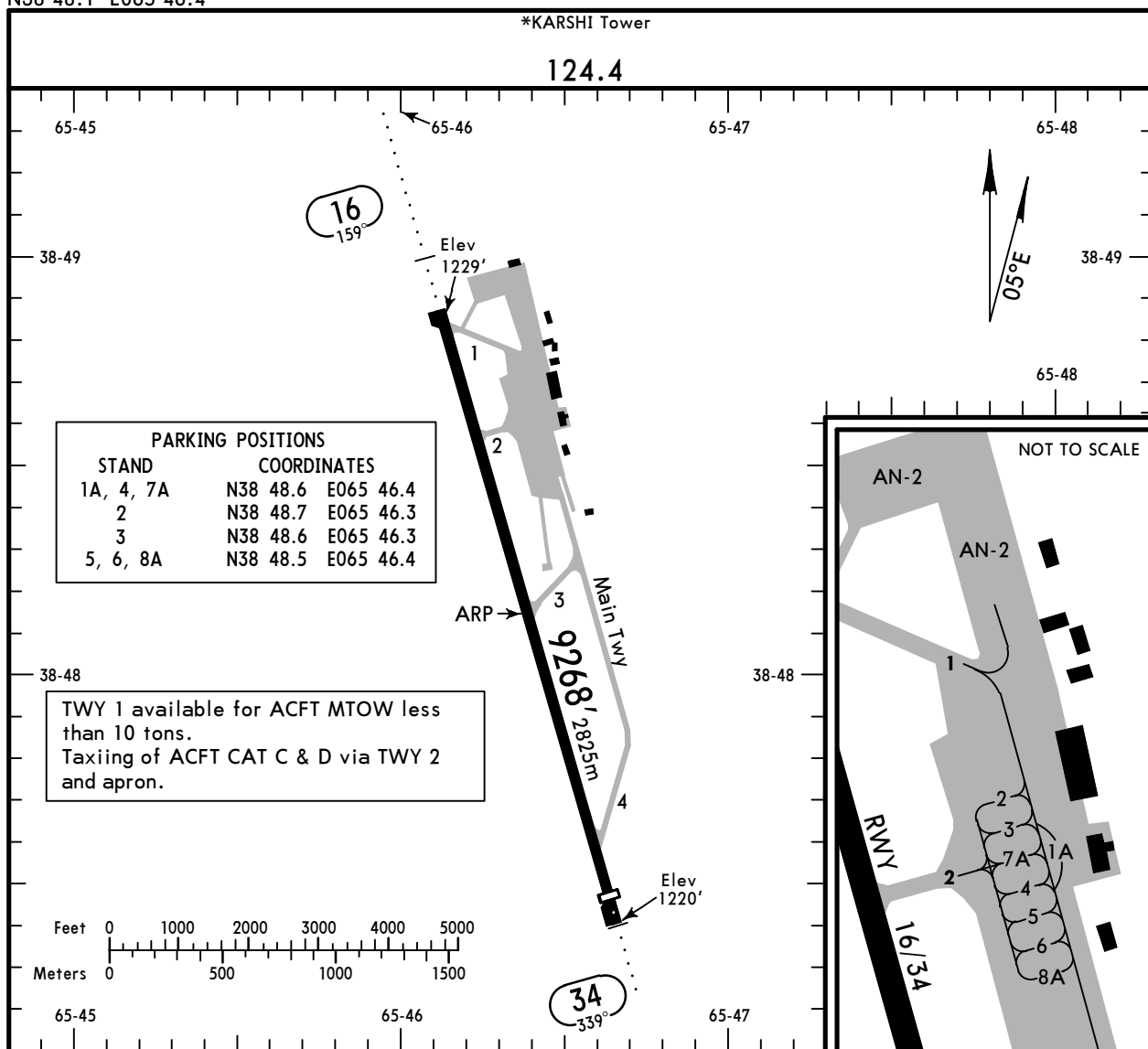


① If necessary climb in holding to assigned FL.

UTSK/KSQ
 Apt Elev **1232'**
 N38 48.1 E065 46.4

JEPPesen
 3 MAY 24 **(10-9)** Eff 16 May

KARSHI, UZBEKISTAN
KARSHI



ADDITIONAL RUNWAY INFORMATION

RWY	LANDING BEYOND	USABLE LENGTHS		TAKE-OFF	WIDTH
		Threshold	Glide Slope		
16 34	RL (60m) MIALS	8858' 2700m	8114' 2473m	①	157' 48m

① TAKE-OFF RUN AVAILABLE

RWY 16:

From rwy head	9268' (2825m)
twy 1 int	8940' (2725m)
twy 2 int	7300' (2225m)

RWY 34:

From rwy head	9268' (2825m)
twy 4 int	7956' (2425m)
twy 3 int	4675' (1425m)

State	TAKE-OFF	
RL & RCLM & runway end (red) lights	RL & RCLM (DAY only)	RCLM (DAY only)
300m	300m	500m

UTSK/KSQ

JEPPESEN

EASA AIR OPS

3 MAY 24
Eff 16 May **10-9S**

KARSHI, UZBEKISTAN
KARSHI

STRAIGHT-IN RWY		A	B	C	D
16	ILS	1459'(230') R/V1000m	1459'(230') R/V1000m	1459'(230') R/V1000m	1459'(230') R/V1000m
	ALS out	R/V1200m	R/V1200m	R/V1200m	R/V1200m
	① LOC	1610'(381') C/V2000m	1610'(381') C/V2000m	1610'(381') C/V2800m	1610'(381') C/V2800m
	① 2 NDB	1610'(381') C/V2000m	1610'(381') C/V2000m	1610'(381') C/V2800m	1610'(381') C/V2800m
	① NDB	2050'(821') C/V4600m	2050'(821') C/V4600m	2050'(821') C/V4800m	2050'(821') C/V4800m
34	① NDB	2040'(821') C/V4600m	2040'(821') C/V4600m	2040'(821') C/V4800m	2040'(821') C/V4800m

① Continuous Descent Final Approach.

TAKE-OFF

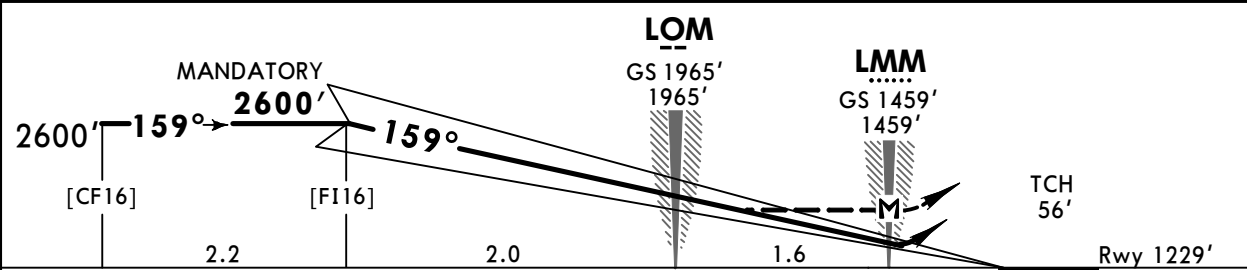
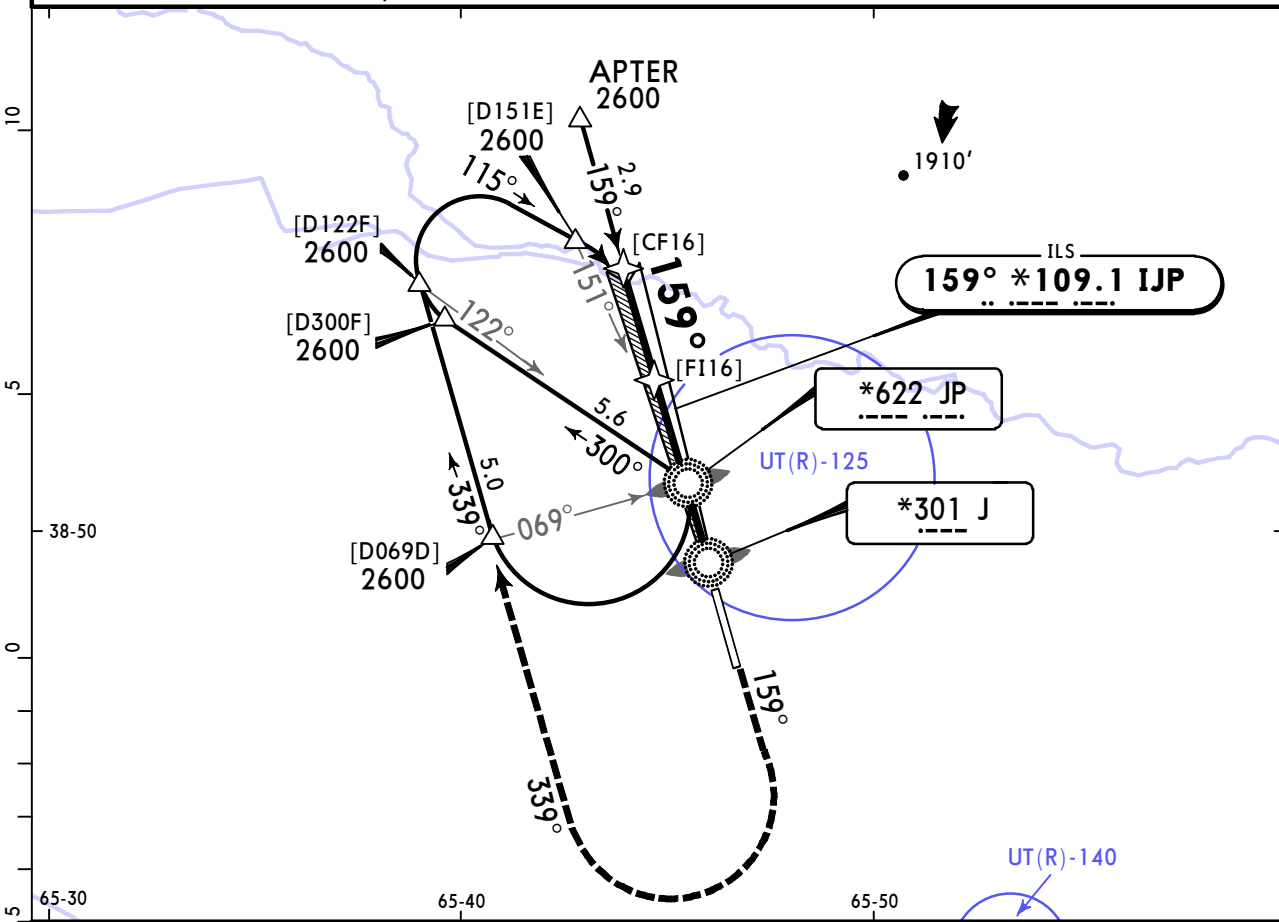
RL & RCLM & runway end (red) lights	RL & RCLM (DAY only)	RCLM (DAY only)
300m	300m	500m

UTSK/KSQ
KARSHI

JEPPESEN
3 MAY 24 (11-1) Eff 16 May

KARSHI, UZBEKISTAN
ILS or LOC Rwy 16

*KARSHI Tower					<p>MSA JP NDB</p>
124.4					
LOC IJP *109.1	Final Apch Crs 159°	[F116] 2600' (1371')	ILS DA(H) 1459' (230')	Apt Elev 1232' Rwy 1229'	
MISSED APCH: Climb on 159° to 1900', then turn RIGHT onto 339° climbing to 2600', then according to chart, or as directed.					
Alt Set: hPa		Rwy Elev: 44 hPa		Trans level: FL080	Trans alt: 6000'



Gnd speed-Kts	70	90	100	120	140	160	MIALS	1900'	on 159°	339°	2600'
ILS GS or LOC Descent Angle	3.00°	372	478	531	637	743	849	↑		RT	↑
MAP at LMM											

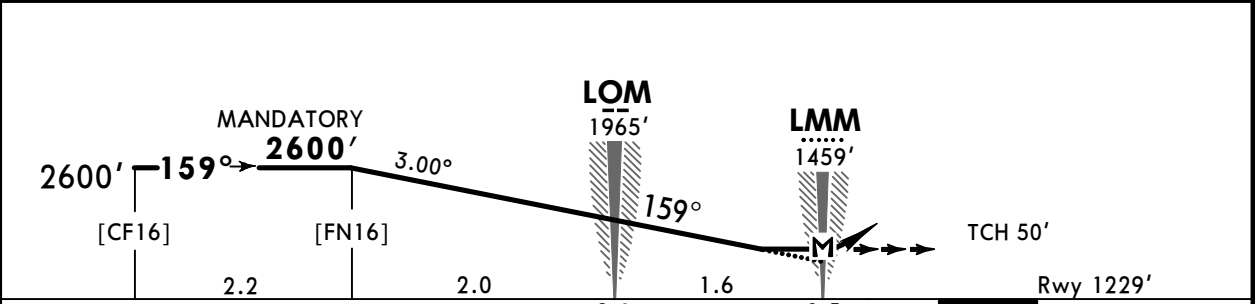
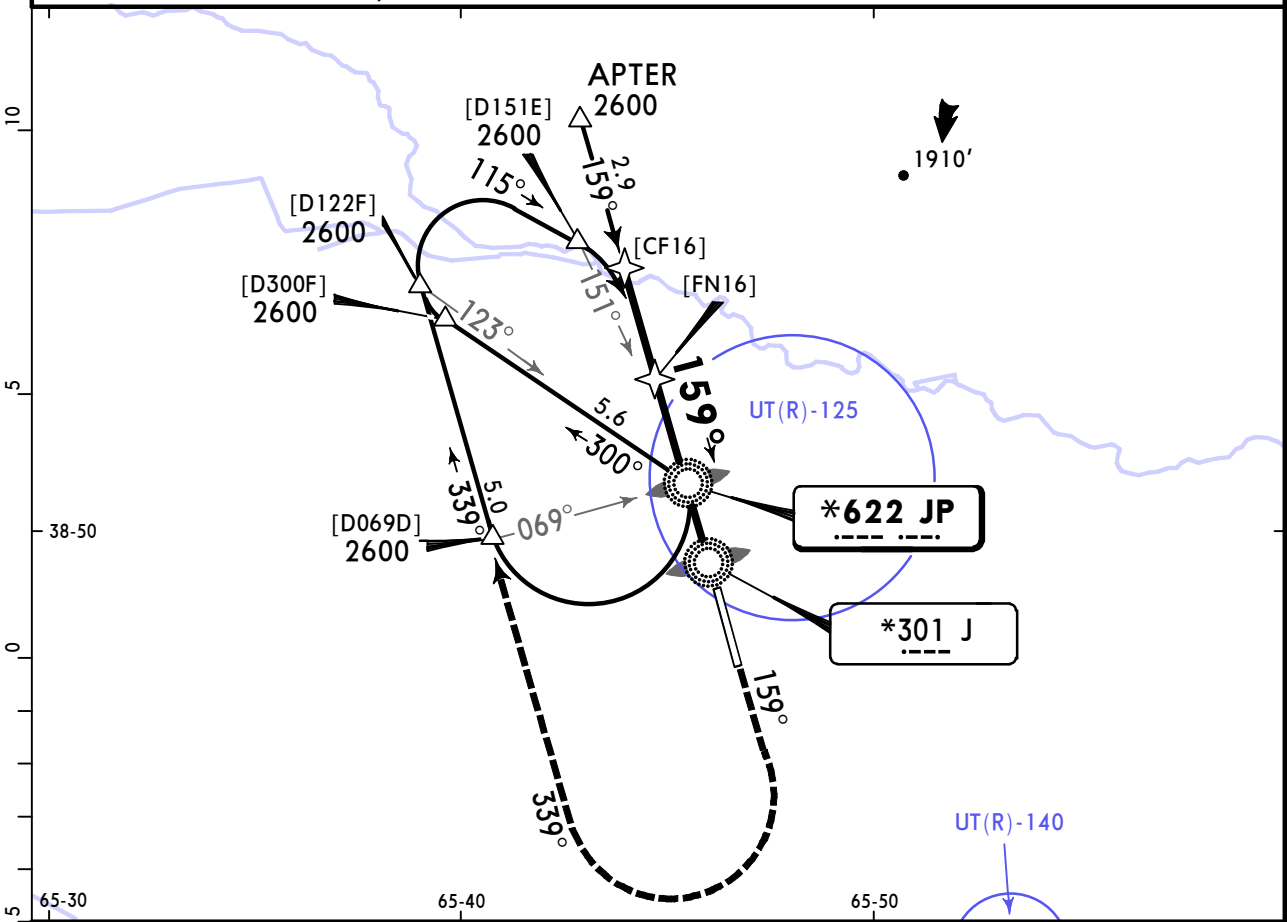
State				STRAIGHT-IN LANDING			
ILS		LOC (GS out)		ILS		LOC (GS out)	
DA(H) 1459' (230')		MDA(H) 1610' (381')		FULL		ALS out	
A				C/V2000m			
B				C/V2800m			
C	R/V1000m	R/V1200m					
D							

UTSK/KSQ
KARSHI

JEPPESEN
3 MAY 24
Eff 16 May (16-1)

KARSHI, UZBEKISTAN
2 NDB or NDB Rwy 16

*KARSHI Tower					<p>MSA JP NDB</p>
124.4					
NDB JP *622	Final Apch Crs 159°	[FN16] 2600' (1371')	(CONDITIONAL) MDA(H) 1610' (381')	Apt Elev 1232' Rwy 1229'	
MISSED APCH: Climb on 159° to 1900', then turn RIGHT onto 339° climbing to 2600', then according to chart, or as directed.					
Alt Set: hPa		Rwy Elev: 44 hPa	Trans level: FL080		Trans alt: 6000'



Gnd speed-Kts	70	90	100	120	140	160	MIALS	1900'	on 159°	339°	2600'
Descent Angle	3.00°	372	478	531	637	849		↑	→ RT	↑	
MAP at LMM											

PANS OPS	State		STRAIGHT-IN LANDING	
	2 NDB		NDB	
	MDA(H) 1610' (381')		MDA(H) 2050' (821')	
	ALS out		ALS out	
A	C/V2000m		C/V4600m	
B	C/V2000m		C/V4600m	
C	C/V2800m		C/V4800m	
D	C/V2800m		C/V4800m	

Chart changes since cycle 04-2025

ADD = added chart, REV = revised chart, DEL = deleted chart.

ACT	PROCEDURE IDENT	INDEX	REV DATE	EFF DATE
-----	-----------------	-------	----------	----------

KARSHI, (KARSHI - UTSK)

TERMINAL CHART CHANGE NOTICES

No Chart Change Notices for Airport UTSK