

## List of pages in this Trip Kit

Trip Kit Index

Airport Information For UTSS

Terminal Charts For UTSS

Revision Letter For Cycle 05-2025

Change Notices

Notebook

## General Information

Location: SAMARKAND UZB  
ICAO/IATA: UTSS / SKD  
Lat/Long: N39° 42.10', E066° 58.95'  
Elevation: 2223 ft

Airport Use: Public  
Daylight Savings: Not Observed  
UTC Conversion: -5:00 = UTC  
Magnetic Variation: 5.0° E

Fuel Types: Jet A-1  
Repair Types: Minor Airframe, Minor Engine  
Customs: Yes  
Airport Type: IFR  
Landing Fee: Yes  
Control Tower: Yes  
Jet Start Unit: No  
LLWS Alert: No  
Beacon: No

Sunrise: 0023 Z  
Sunset: 1454 Z

## Runway Information

Runway: 09  
Length x Width: 10187 ft x 148 ft  
Surface Type: asphalt  
TDZ-Elev: 2176 ft  
Lighting: Edge, ALS, Centerline, TDZ  
Stopway: 197 ft

Runway: 27  
Length x Width: 10187 ft x 148 ft  
Surface Type: asphalt  
TDZ-Elev: 2221 ft  
Lighting: Edge, ALS  
Displaced Threshold: 394 ft  
Stopway: 197 ft

## Communication Information

ATIS: 127.800  
Samarkand Tower: 118.700 VHF-DF  
Samarkand Approach: 123.700  
Transit Operations: 131.700 Non-English



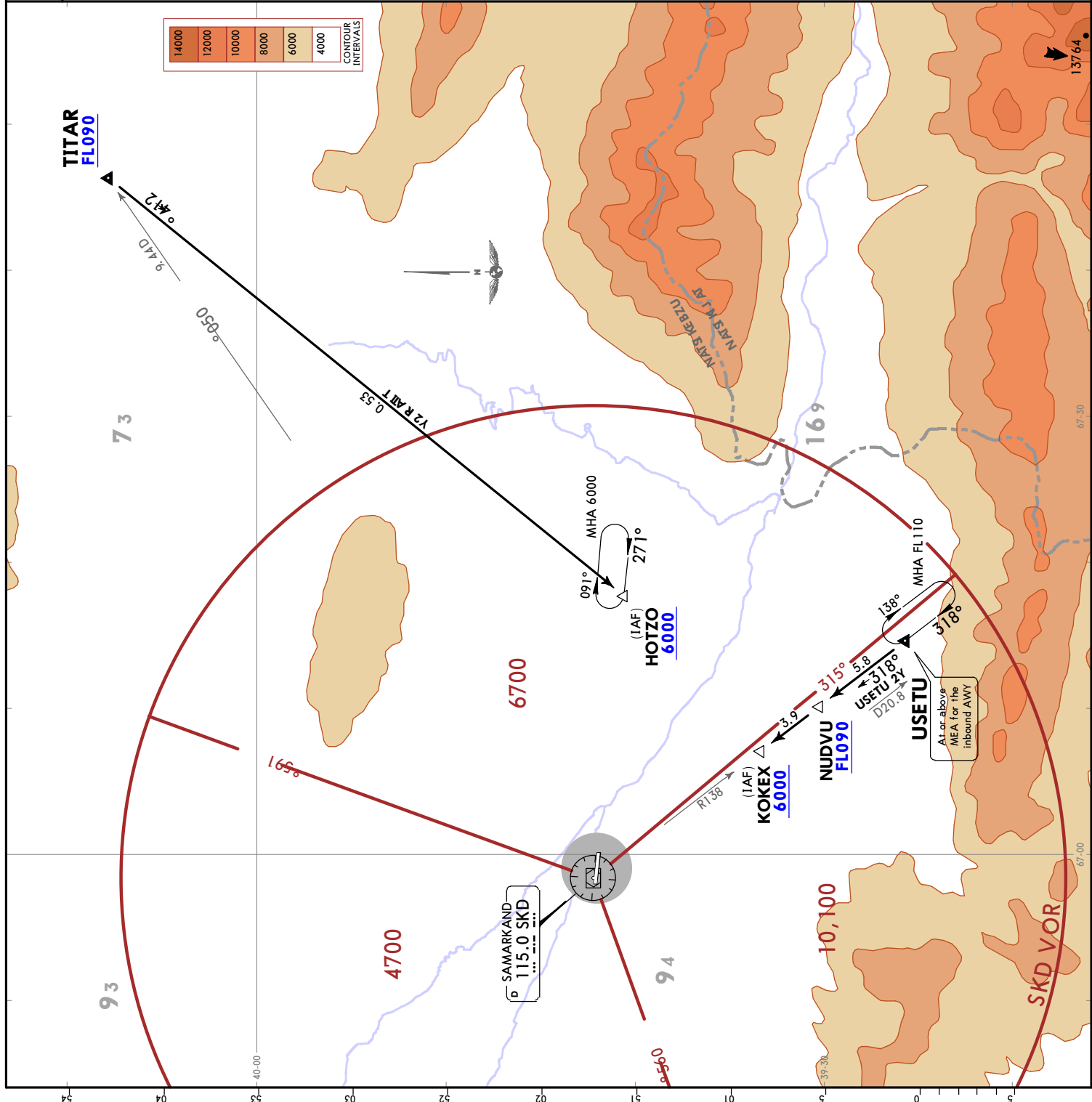
# SAMARKAND, UZBEKISTAN

STAR

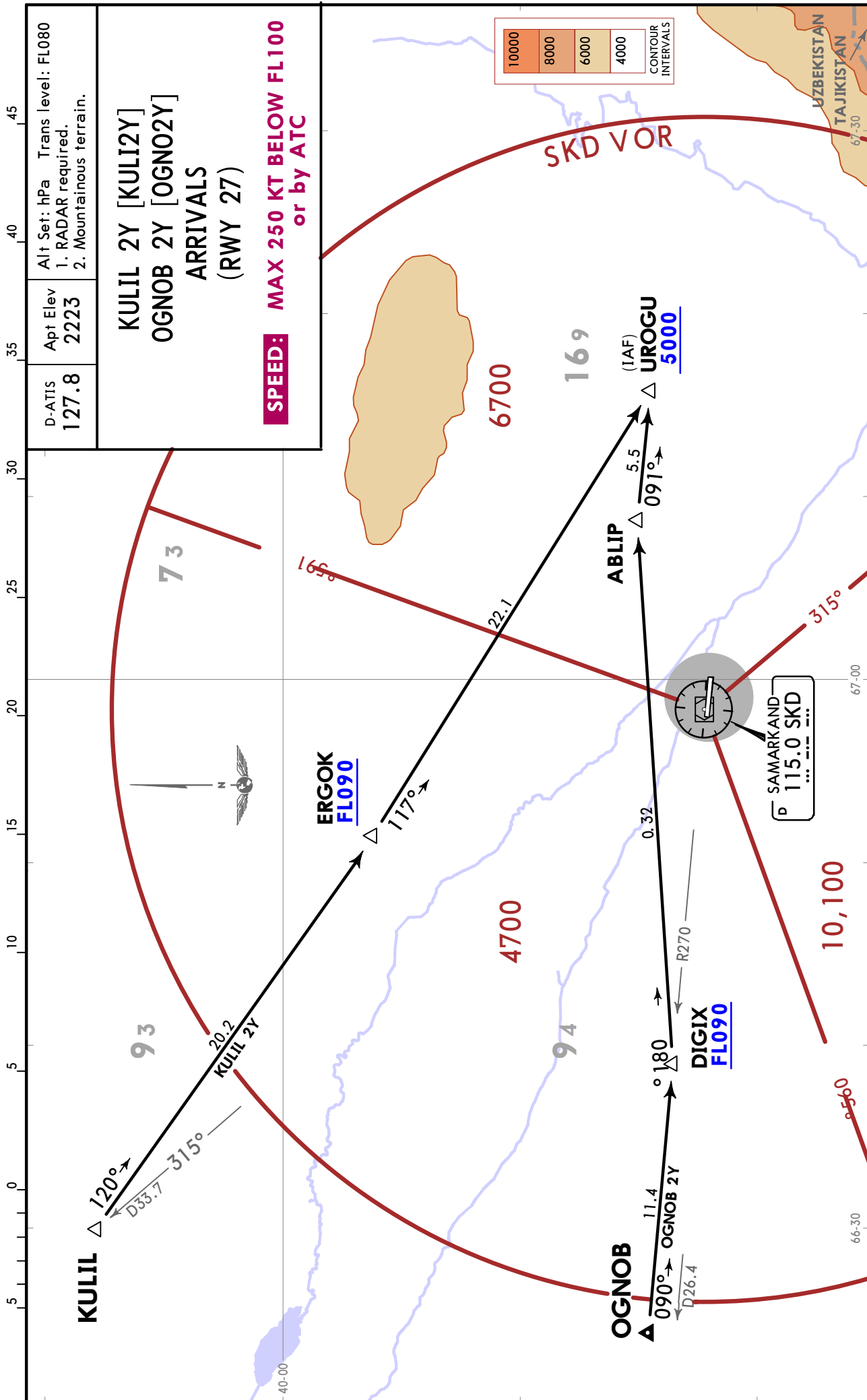
D-ATIS 127.8  
 Apt Elev 2223  
 Alt Set: hPa Trans level: FL080  
 1. RADAR required.  
 2. Mountainous terrain.

TITAR 2Y [TITA2Y]  
 USETU 2Y [USET2Y]  
**ARRIVALS**  
 (RWY 27)

**SPEED: MAX 250 KT BELOW FL100 or by ATC**



# UTSS/SKD SAMARKAND



# SAMARKAND, UZBEKISTAN

STAR

D-ATIS  
127.8

Apt Elev  
2223

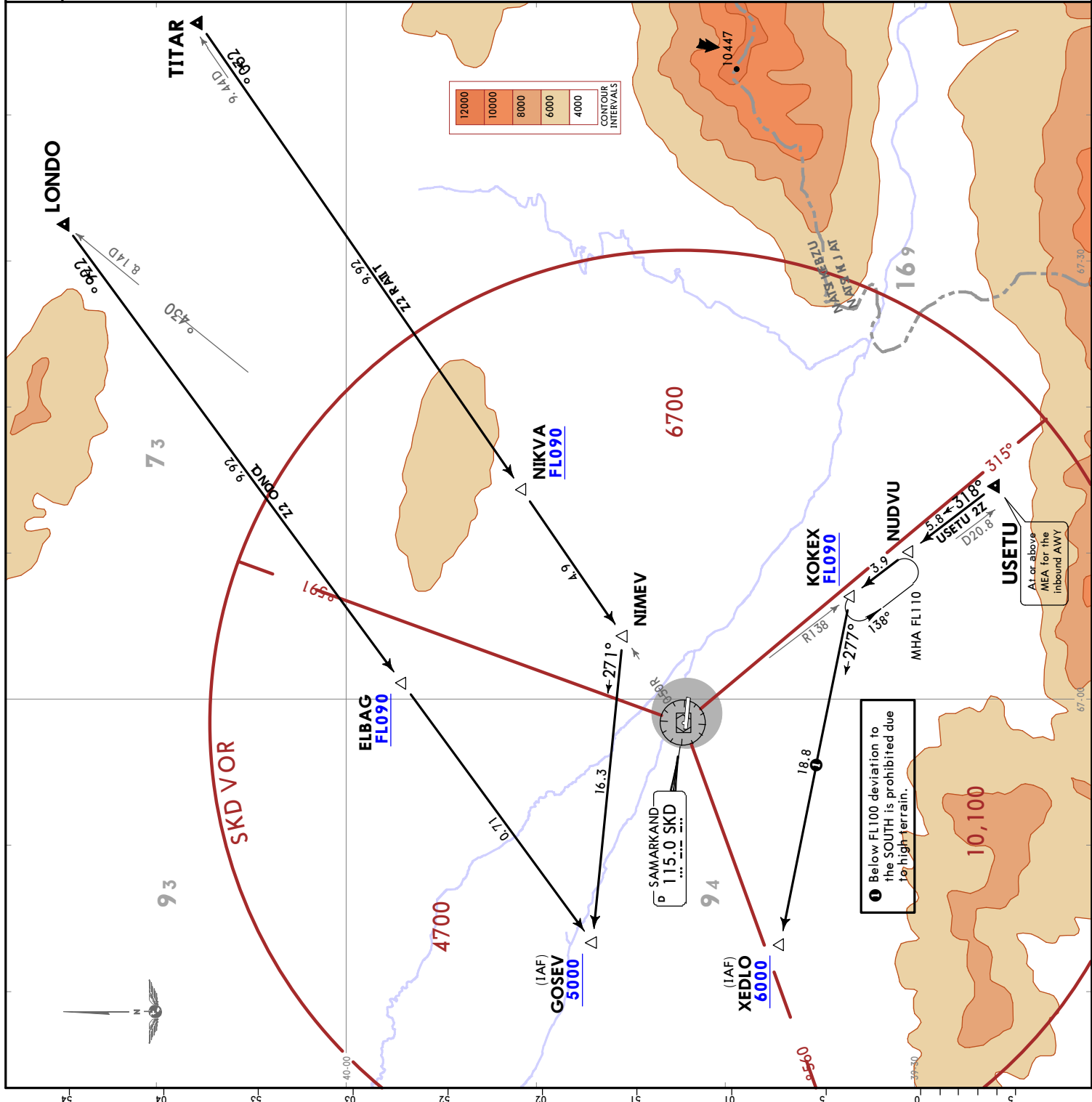
Alt Set: hPa Trans level: FL080  
1. RADAR required.  
2. Mountainous terrain.

LONDO Z [LONDZ]  
USETU Z [USETZ]

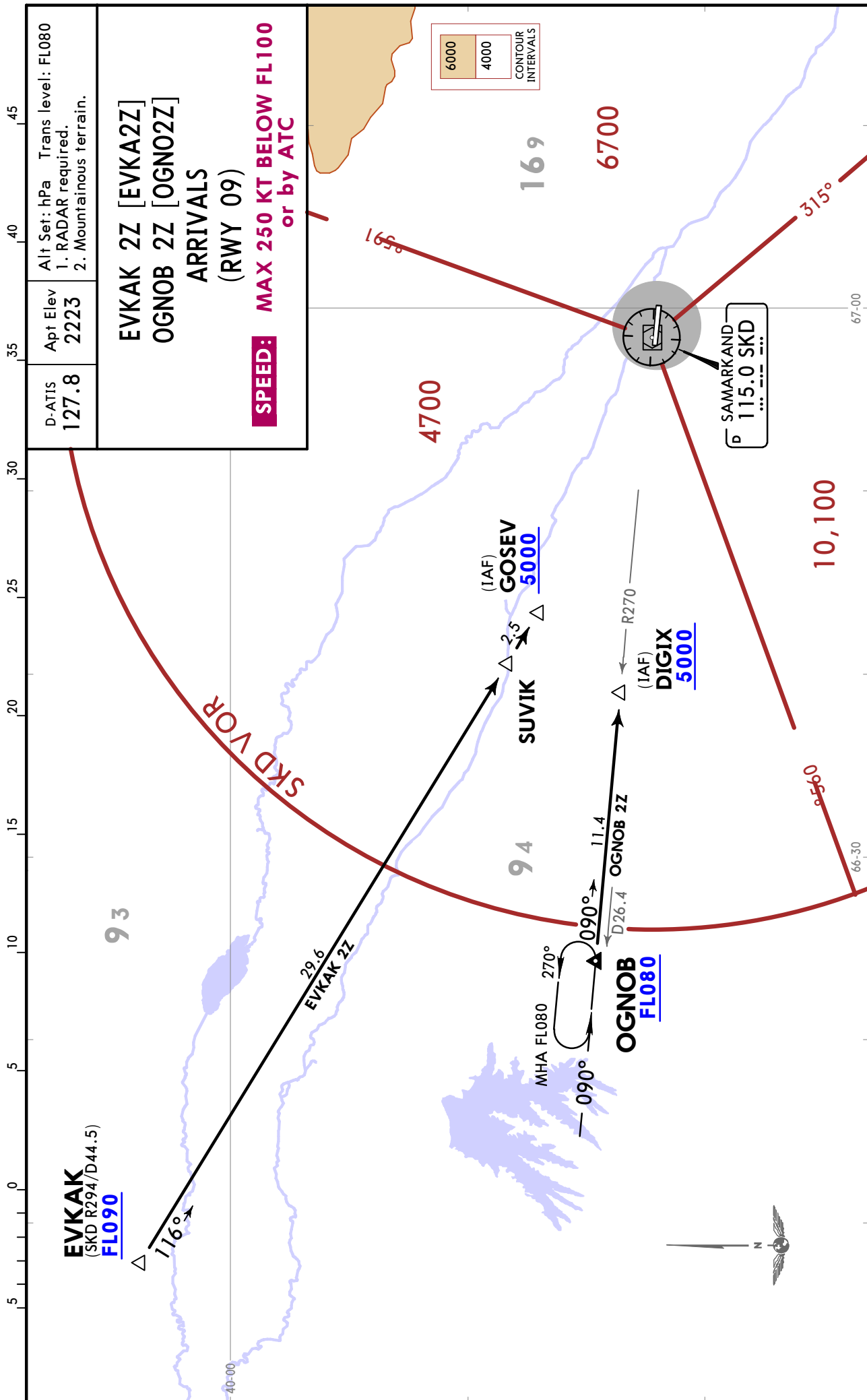
TITAR Z [TITAZ]  
BY ATC

ARRIVALS  
(RWY 09)

**SPEED: MAX 250 KT BELOW FL100  
or by ATC**



# UTSS/SKD SAMARKAND



**SAMARKAND, UZBEKISTAN**

**SID**

Apt Elev  
2223

Trans alt: 6000  
1. RADAR required.  
2. Mountainous terrain.

**TITAR 2A [TITA2A]**  
**USETU 2A [USET2A]**  
**DEPARTURES**  
**(RWY 09)**

**SPEED: MAX 250 KT BELOW FL100**  
**or by ATC**

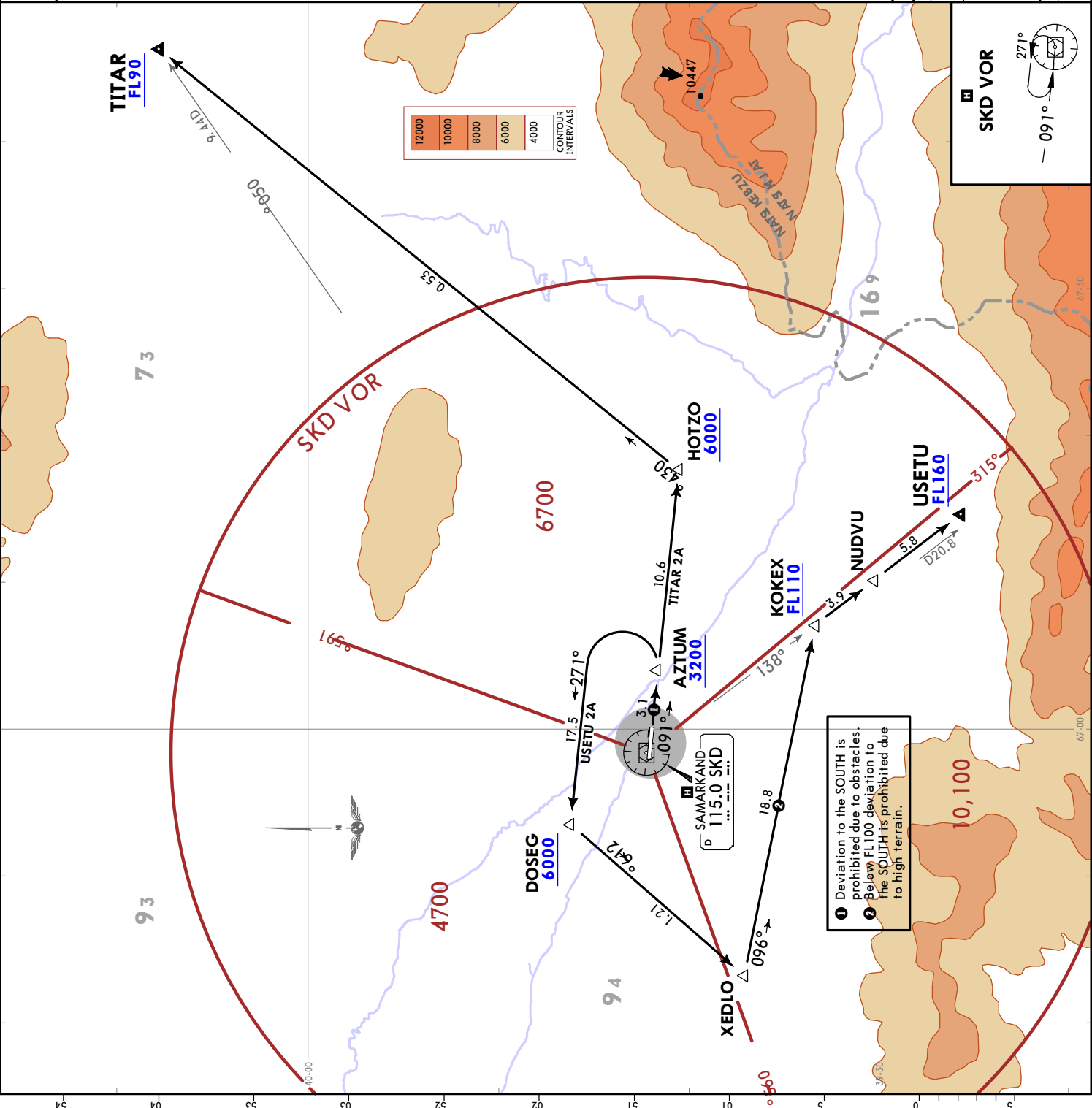
These SIDs require a minimum climb gradient of 5.2% up to 6000.

Gnd speed-KT	75	100	150	200	250	300
5.2% V/V (fpm)	395	527	790	1053	1316	1580

If unable to comply advise ATC.

Initial climb clearance FL80 or by ATC	
SID	ROUTING
TITAR 2A	Climb on 091° track to HOTZO, then 034° track to TITAR.
USETU 2A	Climb on 091° track inbound AZTUM, turn LEFT, intercept 271° track to DOSEG, 216° track to XEDLO, 096° track to KOKEX, 138° track via NUDVU to USETU.

**NON RADAR SID ROUTING**  
Climb on 091° track, when passing 3200 turn LEFT, join holding over SKD VOR. Climb MEA for outbound AWY.

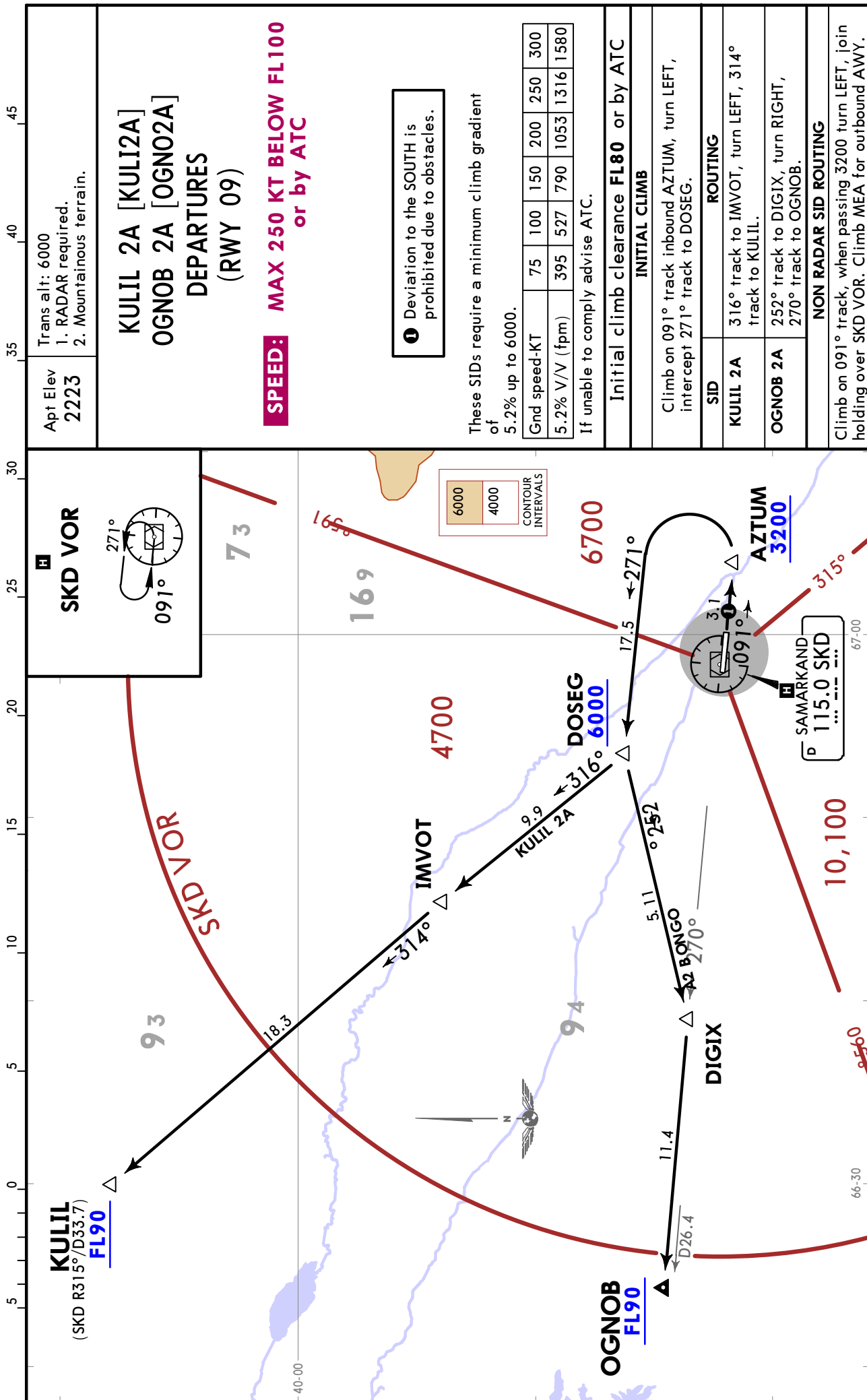


# UTSS/SKD SAMARKAND

21 JAN 22 **10-3A** Eff 27 Jan

# JEPPESSEN SAMARKAND, UZBEKISTAN

**SID**



**SAMARKAND, UZBEKISTAN**

**SID**

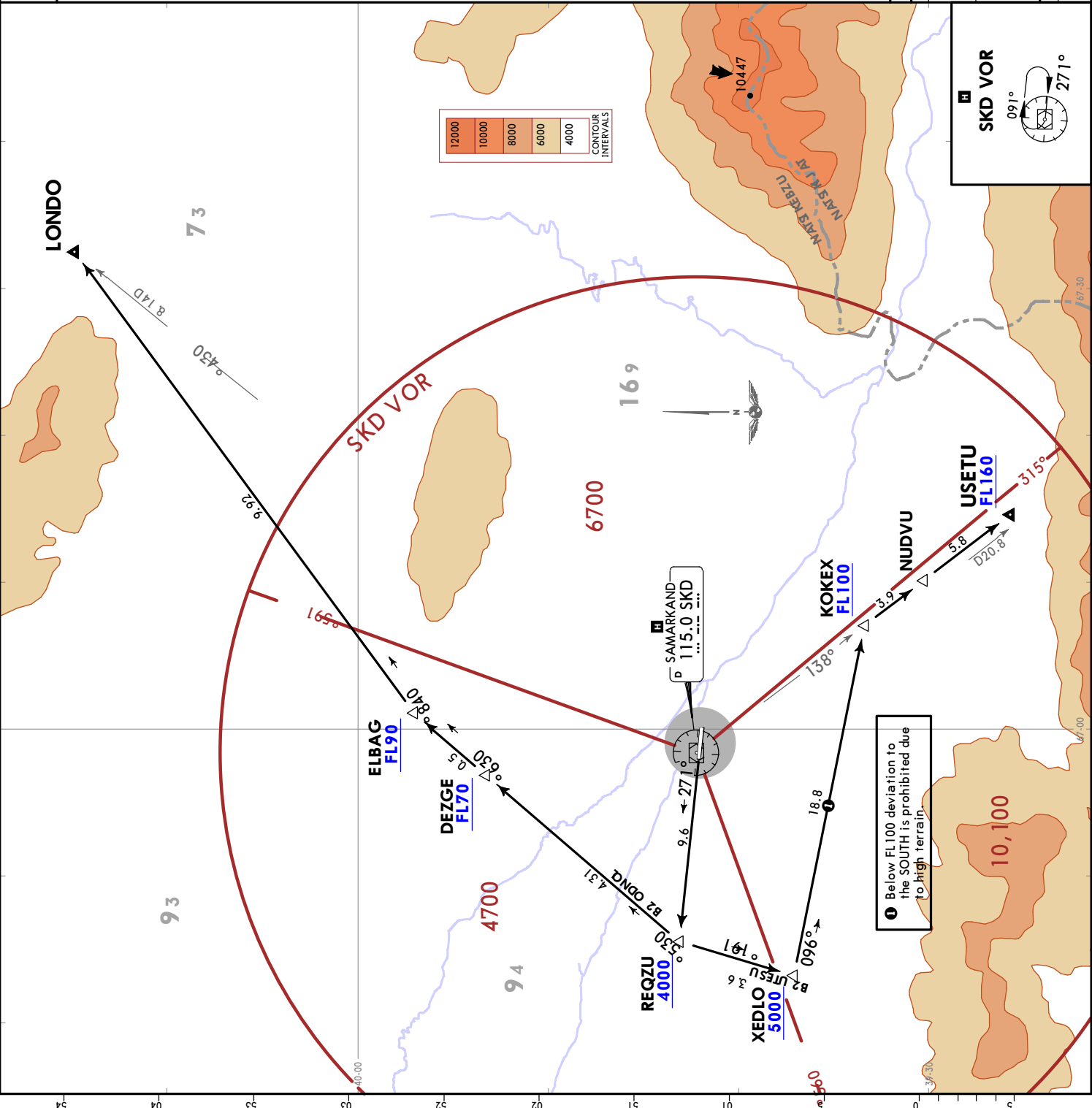
Apt Elev  
2223

Trans alt: 6000  
1. RADAR required.  
2. Mountainous terrain.

**LONDO 2B [LOND2B]**  
**USETU 2B [USET2B]**  
**DEPARTURES**  
**(RWY 27)**

**SPEED: MAX 250 KT BELOW FL100**  
**or by ATC**

Initial climb clearance FL80 or by ATC	SID	INITIAL CLIMB/ROUTING
LONDO 2B		Climb on 271° track to REQZU, 035° track to DEZGE, turn RIGHT, 036° track to ELBAG, turn RIGHT, 048° track to LONDO.
USETU 2B		Climb on 271° track to REQZU, 191° track to XEDLO, turn LEFT, 096° track to KOKEK, turn RIGHT, 138° track via NUDVU to USETU.
<b>NON RADAR SID ROUTING</b>		
Climb on 271° track, when passing 2900 turn RIGHT, join holding over SKD. Climb MEA for outbound AWY.		

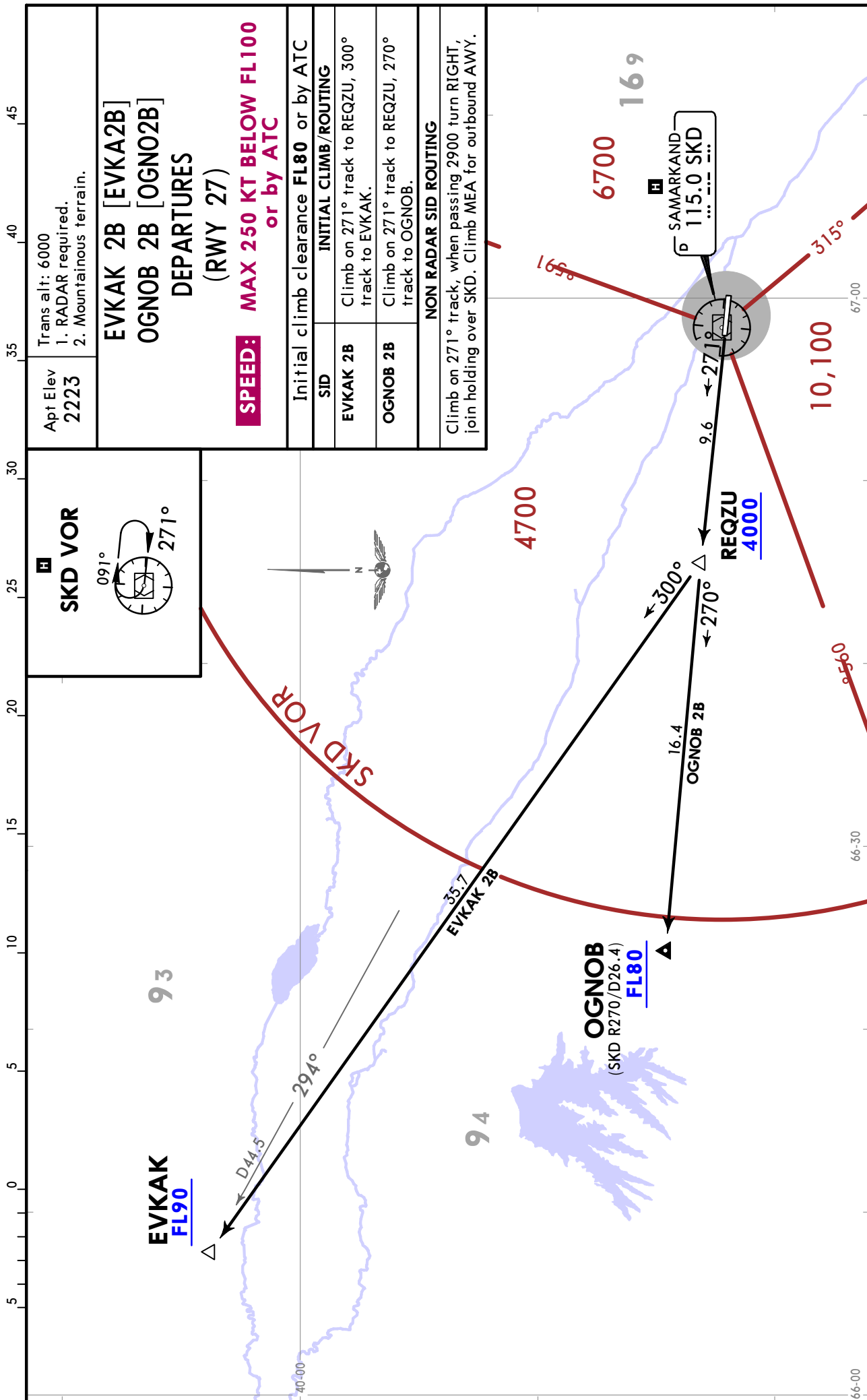


# UTSS/SKD SAMARKAND

21 JAN 22 **10-3C** Eff 27 Jan

# JEPPESEN SAMARKAND, UZBEKISTAN

**SID**

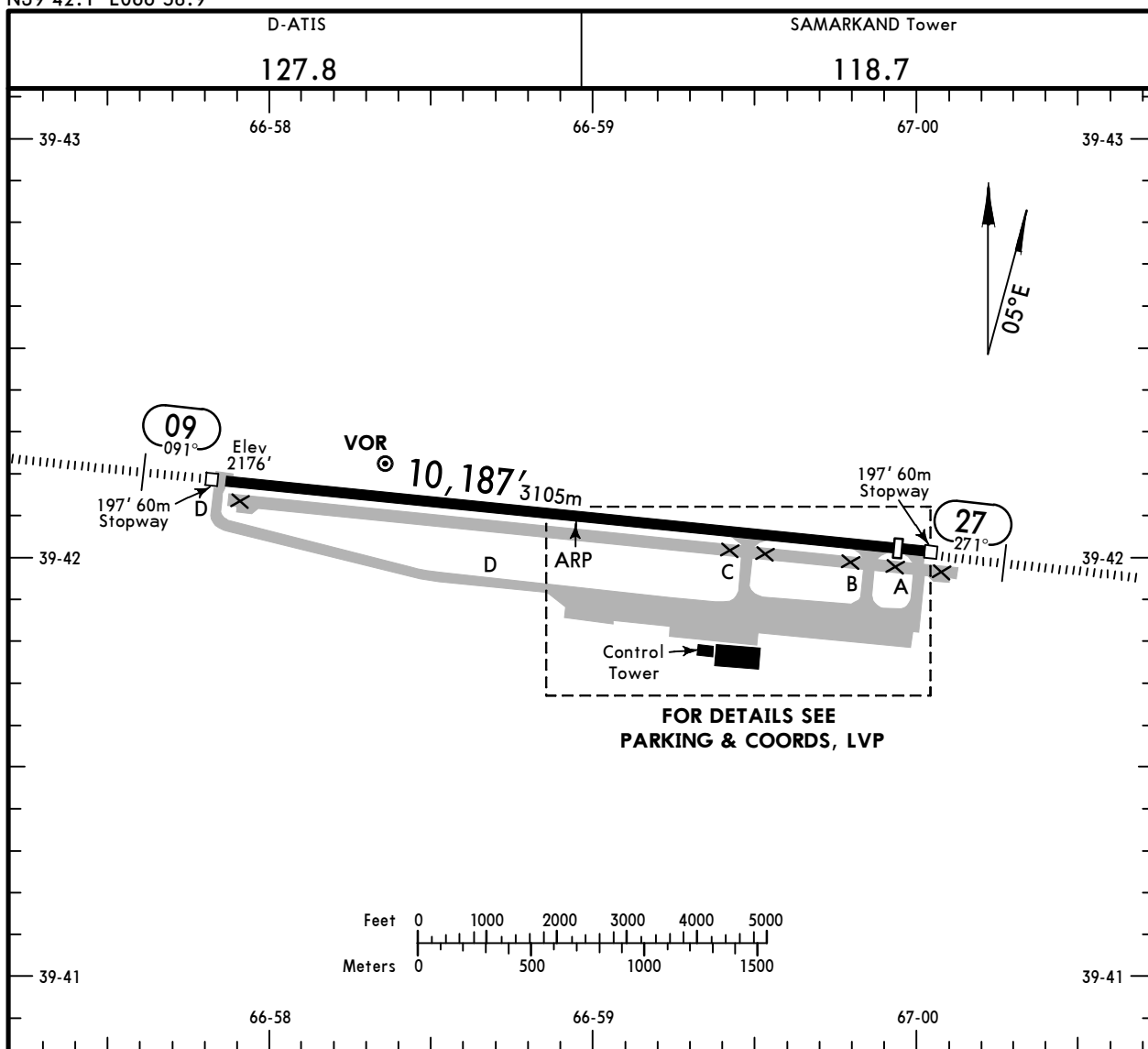


CHANGES: Temporary procedures established as permanent.

© JEPPESEN, 2022. ALL RIGHTS RESERVED.

**UTSS/SKD**  
 Apt Elev **2223'**  
 N39 42.1 E066 58.9

**JEPPESEN SAMARKAND, UZBEKISTAN**  
 21 FEB 25 **(10-9)**  
**SAMARKAND**



**ADDITIONAL RUNWAY INFORMATION**

RWY					USABLE LENGTHS LANDING BEYOND		TAKE-OFF	WIDTH
	HIRL (60m)	CL (15m)	HIALS-II	TDZ	PAPI-L ①	Threshold		
09	HIRL (60m)	CL (15m)	HIALS-II	TDZ	PAPI-L ①		9275' 2827m	148'
27	HIRL (60m)		HIALS		PAPI-L ①	9793' 2985m	8700' 2652m	45m

① (angle 3.0°)

② TAKE-OFF RUN AVAILABLE

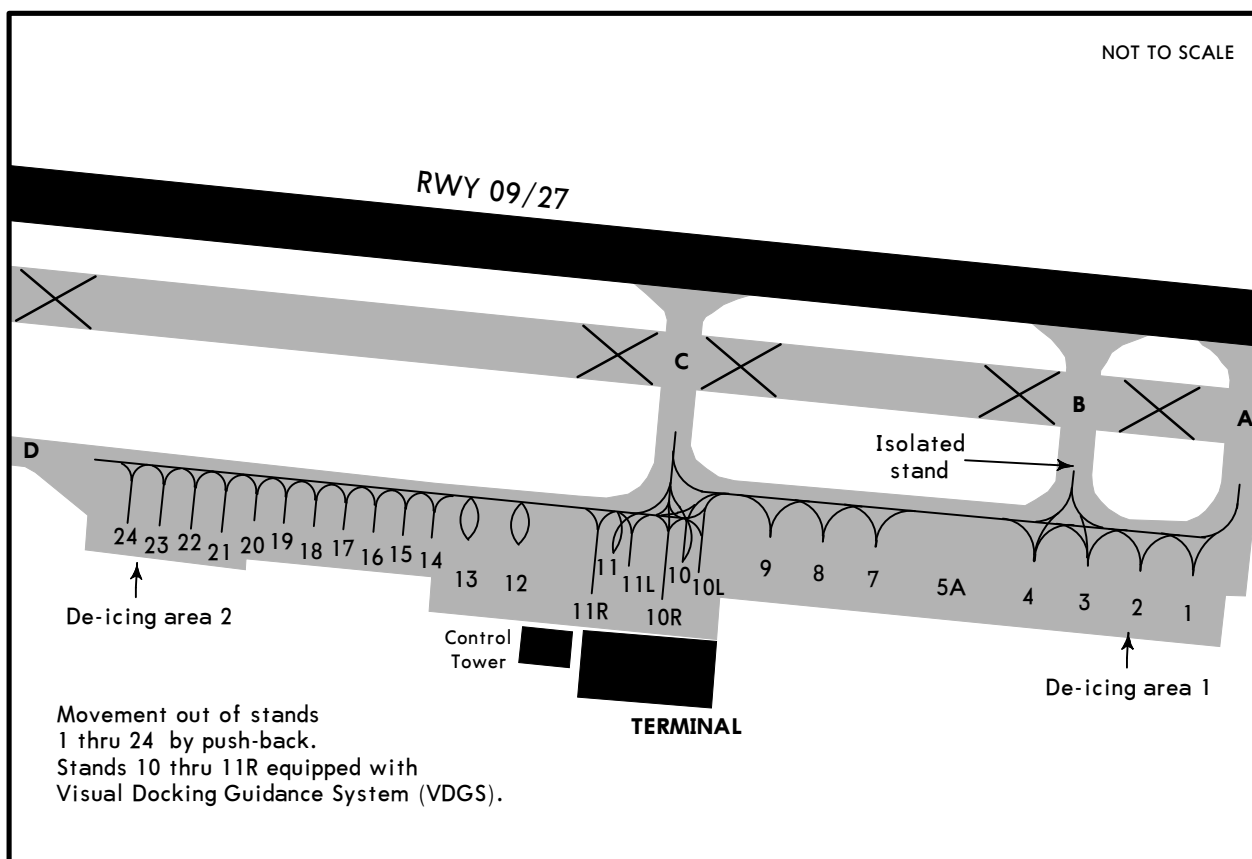
RWY 27:

From rwy head	10,187' (3105m)
twy B int	9432' (2875m)
twy C int	7661' (2335m)

State	TAKE-OFF		
	Rwy 09 ①	Rwy 27	All Rwys
	HIRL & CL (spacing 15m or less) & Runway end lights	HIRL & RCLM	HIRL & RCLM & Runway end lights
			RCLM
			DAY
A	R/V125m	R/V250m	R/V500m
B			
C			
D	R/V150m	R/V300m	R/V300m

① Climb gradient of 5.2% (316'/NM) up to 3200' required.

NOT TO SCALE



**INS COORDINATES**

STAND No.	COORDINATES	STAND No.	COORDINATES
1	N39 41.8 E067 00.0	18 thru 20	N39 41.9 E066 59.1
2, 3	N39 41.8 E066 59.9	21, 22	N39 41.8 E066 59.0
4	N39 41.8 E066 59.8	23, 24	N39 41.9 E066 59.0
5A, 7	N39 41.8 E066 59.7		
8, 9	N39 41.8 E066 59.6		
10 thru 10R	N39 41.8 E066 59.5		
11 thru 11R	N39 41.8 E066 59.4		
12, 13	N39 41.8 E066 59.3		
14	N39 41.8 E066 59.2		
15 thru 17	N39 41.9 E066 59.2		

**LOW VISIBILITY PROCEDURES (LVP)**

LVP are initiated when RVR is less than 550m, but not less than the established state minimum for take-off.

The flight crews are informed about LPV implementation by ATC via ATIS using the phrase:  
"LVP in progress."

UTSS/SKD

16 DEC 22  
**Eff 29 Dec** **JEPPESEN**  
**(10-9S)**

**EASA AIR OPS**  
**SAMARKAND, UZBEKISTAN**  
**SAMARKAND**

STRAIGHT-IN RWY	A	B	C	D
<b>09</b> <b>①</b> CAT II ILS	<b>2276'</b> (100')	<b>2276'</b> (100')	<b>2276'</b> (100')	<b>2288'</b> (112')
	<b>RA 106'</b> 300m	<b>RA 106'</b> 300m	<b>RA 106'</b> 300m	<b>RA 118'</b> 300m
	<b>①</b> ILS	<b>2376'</b> (200')	<b>2376'</b> (200')	<b>2376'</b> (200')
	FULL ALS out	750m 1200m	750m 1200m	750m 1200m
LOC	NOT AUTHORIZED	NOT AUTHORIZED	NOT AUTHORIZED	NOT AUTHORIZED
<b>①②</b> VOR DME	<b>2950'</b> (774') 3900m	<b>2950'</b> (774') 3900m	<b>2950'</b> (774') 4100m	<b>2950'</b> (774') 4100m
<b>27</b> ILS	<b>2501'</b> (280')	<b>2501'</b> (280')	<b>2501'</b> (280')	<b>2501'</b> (280')
	FULL	1200m	1200m	1200m
	ALS out	1500m	1500m	1500m
	LOC	NOT AUTHORIZED	NOT AUTHORIZED	NOT AUTHORIZED
<b>②</b> VOR DME	<b>3140'</b> (919') 4900m	<b>3140'</b> (919') 4900m	<b>3140'</b> (919') 5000m	<b>3140'</b> (919') 5000m

- ① Missed apch climb gradient mim 5.2% up to 3200'.
- ② Continuous Descent Final Approach.

CIRCLE-TO-LAND ③④	100 KT	135 KT	180 KT	205 KT
<b>①⑤</b> to rwy 09	<b>3420'</b> (1244')	<b>3420'</b> (1244')	<b>3520'</b> (1344')	<b>3520'</b> (1344')
<b>⑥</b> to rwy 27	<b>3470'</b> (1249')	<b>3470'</b> (1249')	<b>3570'</b> (1349')	<b>3570'</b> (1349')
	ceil 1350' - V5000m	ceil 1350' - V5000m	ceil 1450' - V5000m	ceil 1450' - V5000m

- ③ VPT.
- ④ DAYTIME only.
- ⑤ Circling height based on rwy 09 threshold elev of 2176'.
- ⑥ Circling height based on rwy 27 threshold elev of 2221'.

**TAKE-OFF**

	Rwy 09 ⑦	Rwy 27	All Rwys	
	HIRL & CL (spacing 15m or less) & Runway end lights	HIRL & RCLM	HIRL & RCLM & Runway end lights	RCLM DAY
A	R/V125m	R/V250m	R/V250m	R/V500m
B				
C	R/V150m	R/V300m	R/V300m	R/V500m
D				

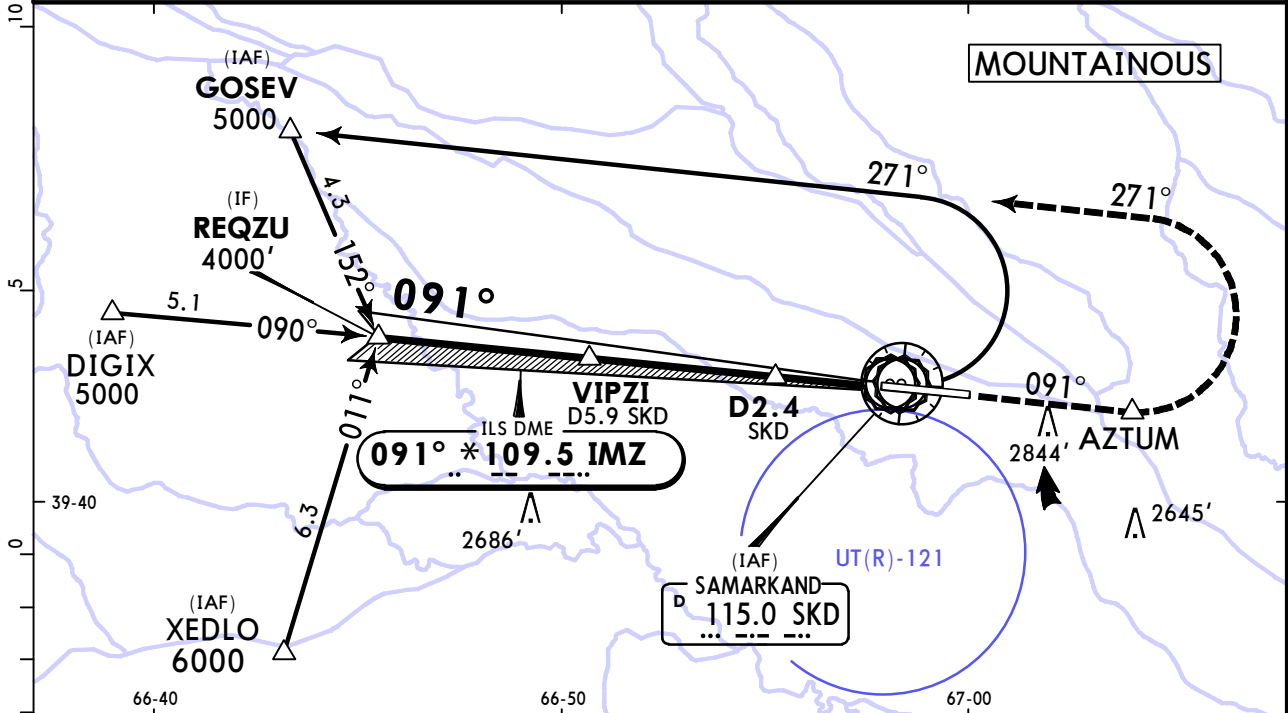
- ⑦ Climb gradient of 5.2% up to 3200' required.

# UTSS/SKD SAMARKAND

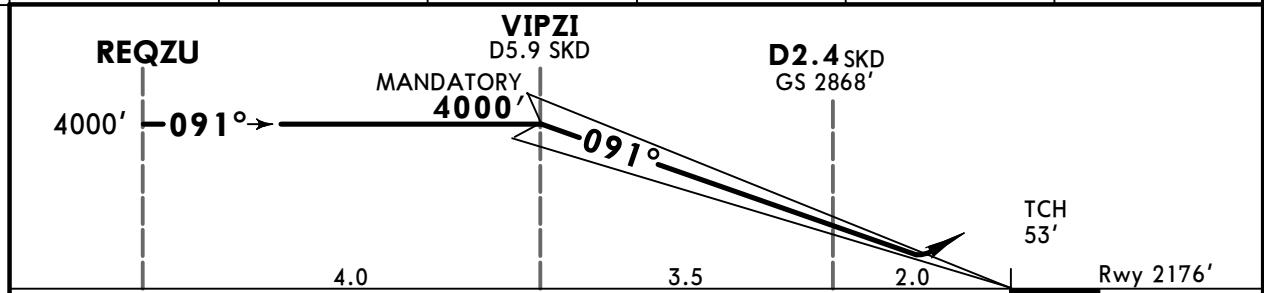
**JEPPESSEN**  
21 FEB 25 **(11-1)**

# SAMARKAND, UZBEKISTAN ILS DME Rwy 09

D-ATIS <b>127.8</b>		SAMARKAND Approach <b>123.7</b>		SAMARKAND Tower <b>118.7</b>	
LOC IMZ <b>*109.5</b>	Final Apch Crs <b>091°</b>	VIPZI MANDATORY <b>4000'</b> (1824')	ILS DA(H) <b>2376'</b> (200')	Apt Elev 2223' Rwy 2176'	
<b>MISSED APCH:</b> Climb on 091° to AZTUM to cross at 3200' or above. Then turn LEFT onto 271° to GOSEV climbing to 4000'. Deviation to the SOUTH is prohibited. Missed apch requires a minimum climb gradient of 5.2%(316'/NM) up to 3200'.					<p>MSA SKD VOR</p>
Alt Set: hPa		Rwy Elev: 77 hPa	Trans level: FL080		Trans alt: 6000'
1. Procedure restricted to MAX 250 KT. 2. ILS DME reads zero at rwy 09 threshold. 3. Do not confuse active RWY 09/27 with closed RWY located South and parallel of RWY 09/27.					



IMZ DME	4.0	3.0	2.0	1.0	0.5
SKD DME	4.4	3.4	2.4	1.4	0.9
ALTITUDE	3507'	3187'	2868'	2548'	2388'



Gnd speed-Kts	70	90	100	120	140	160	HIALS-II PAPI	MIN 3200' on 091°	AZTUM
GS	3.00°	372	478	531	637	743			

**State** STRAIGHT-IN LANDING  
**ILS**  
 DA(H) **2376'** (200')  
 ALS out

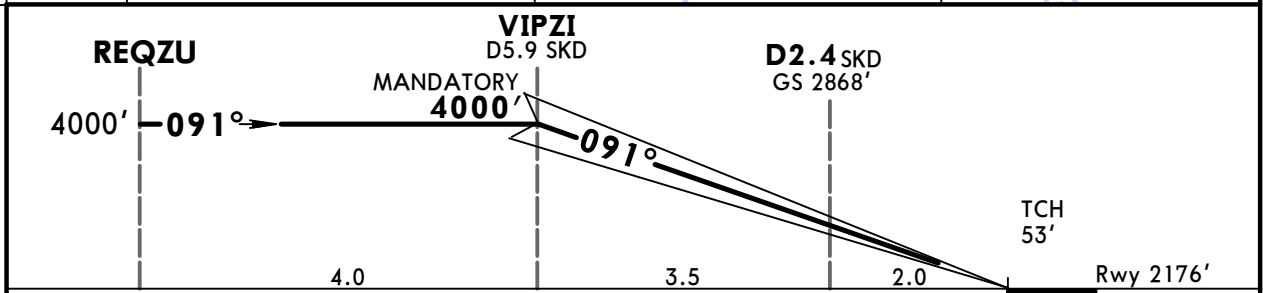
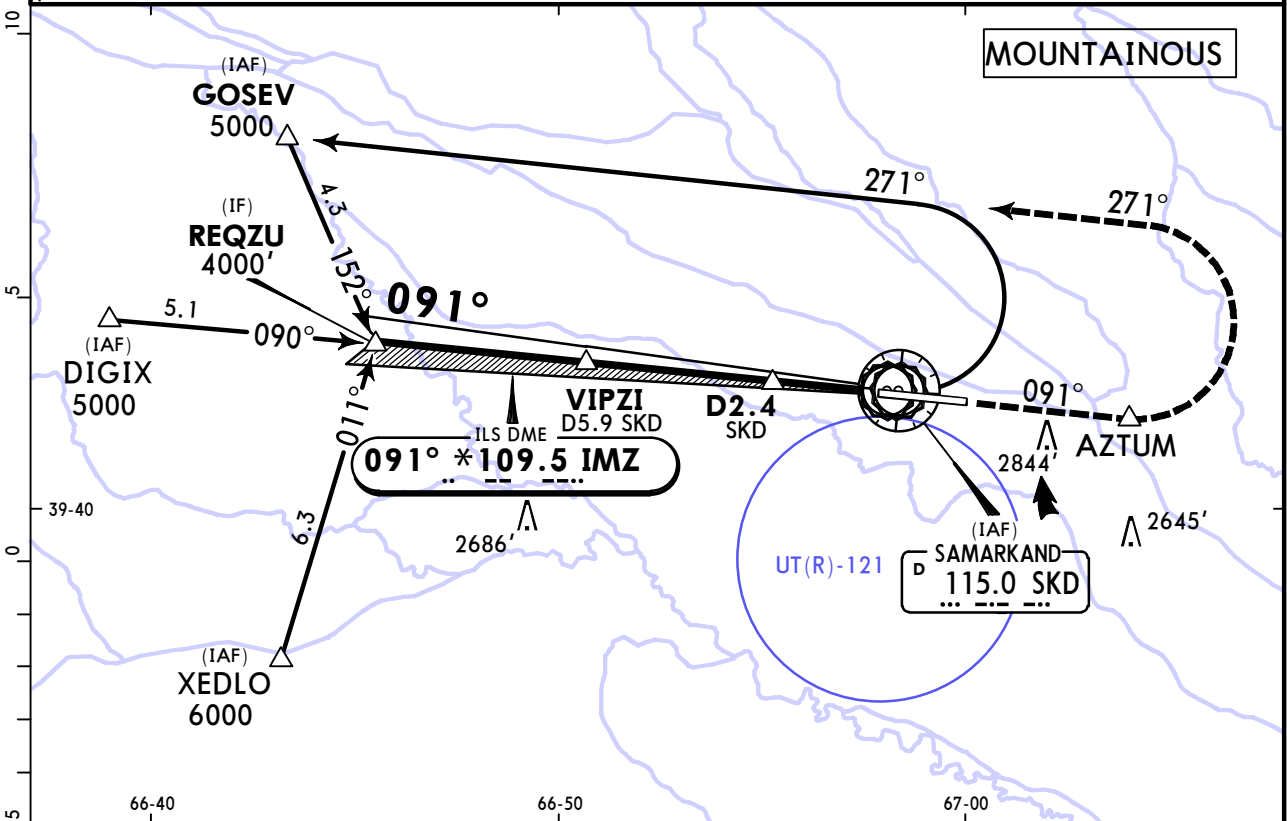
A	R/V750m	R/V1200m
B		
C		
D		

# UTSS/SKD SAMARKAND

21 FEB 25 **11-1A**

# SAMARKAND, UZBEKISTAN CAT II ILS DME Rwy 09

D-ATIS <b>127.8</b>		SAMARKAND Approach <b>123.7</b>		SAMARKAND Tower <b>118.7</b>	
LOC IMZ <b>*109.5</b>	Final Apch Crs <b>091°</b>	VIPZI MANDATORY <b>4000'</b> (1824')	CAT II ILS Refer to Minimums	Apt Elev 2223' Rwy 2176'	<p>MSA SKD VOR</p>
<p><b>MISSED APCH:</b> Climb on 091° to AZTUM to cross at 3200' or above. Then turn LEFT onto 271° to GOSEV climbing to 4000'.</p> <p>Deviation to the SOUTH is prohibited.</p> <p>Missed apch requires a minimum climb gradient of 5.2%(316'/NM) up to 3200'.</p>					
Alt Set: hPa		Rwy Elev: 77 hPa	Trans level: FL080		Trans alt: 6000'
<p>1. Procedure restricted to MAX 250 KT. 2. ILS DME reads zero at rwy 09 threshold. 3. Special Aircrew &amp; Aircraft Certification required. 4. Do not confuse active RWY 09/27 with closed RWY located South and parallel of RWY 09/27.</p>					



Gnd speed-Kts	70	90	100	120	140	160	HIALS-II PAPI	MIN 3200' on 091°	AZTUM
GS	3.00°	372	478	531	637	743			

<b>State</b>	STRAIGHT-IN LANDING	
	CAT II ILS	
ABC	RA 106'	D
DA(H) 2276'(100')		RA 118'
		DA(H) 2288'(112')

R300m

# UTSS/SKD SAMARKAND

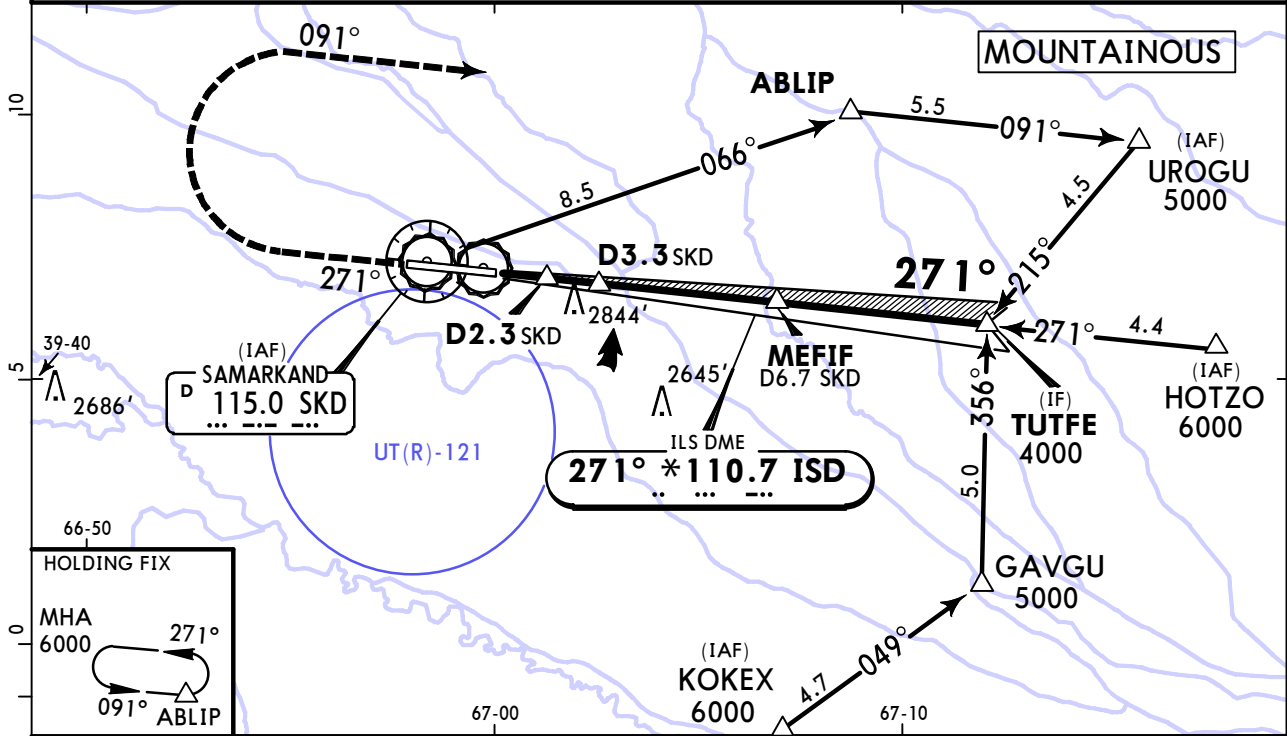
21 FEB 25 **(11-2)**

# SAMARKAND, UZBEKISTAN ILS DME Rwy 27

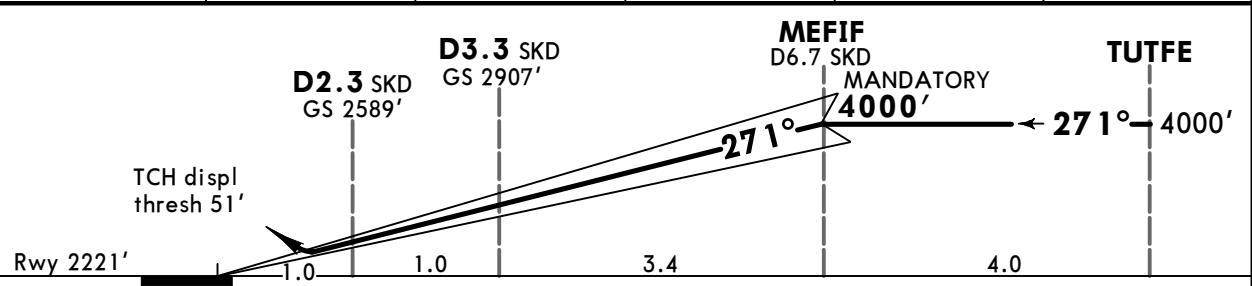
D-ATIS <b>127.8</b>		SAMARKAND Approach <b>123.7</b>		SAMARKAND Tower <b>118.7</b>	
LOC ISD <b>*110.7</b>	Final Apch Crs <b>271°</b>	MEFIF MANDATORY <b>4000'</b> (1779')	ILS DA(H) <b>2501'</b> (280')	Apt Elev 2223' Rwy 2221'	<p>MSA SKD VOR</p>
<b>MISSED APCH: Climb on 271° to 4000', then turn RIGHT onto 091° to ABLIP and contact ATC.</b>					

Alt Set: hPa Rwy Elev: 79 hPa Trans level: FL080 Trans alt: 6000'

1. Procedure restricted to MAX 250 KT. 2. ILS DME reads zero at rwy 27 displaced threshold.  
3. Do not confuse active RWY 09/27 with closed RWY located South and parallel of RWY 09/27.



ISD DME	0.5	1.0	2.0	3.0	4.0
SKD DME	1.8	2.3	3.3	4.3	5.3
ALTITUDE	2431'	2589'	2907'	3224'	3541'



Gnd speed-Kts	70	90	100	120	140	160		<b>4000'</b> ↑ on <b>271°</b> RT <b>ABLIP</b>
GS	3.00°	372	478	531	637	743		

**State** STRAIGHT-IN LANDING

ILS

DA(H) **2501'** (280')

ALS out

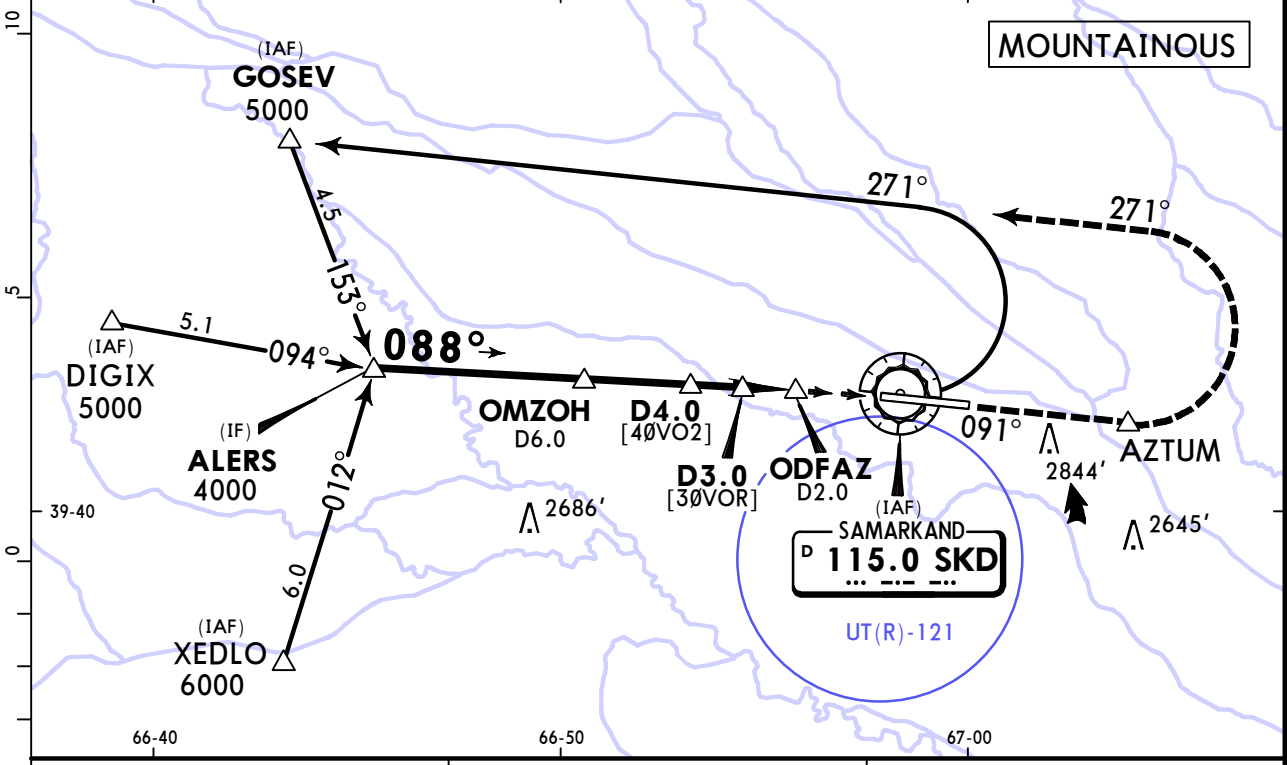
A	R/V1200m	R/V1500m
B		
C		
D		

# UTSS/SKD SAMARKAND

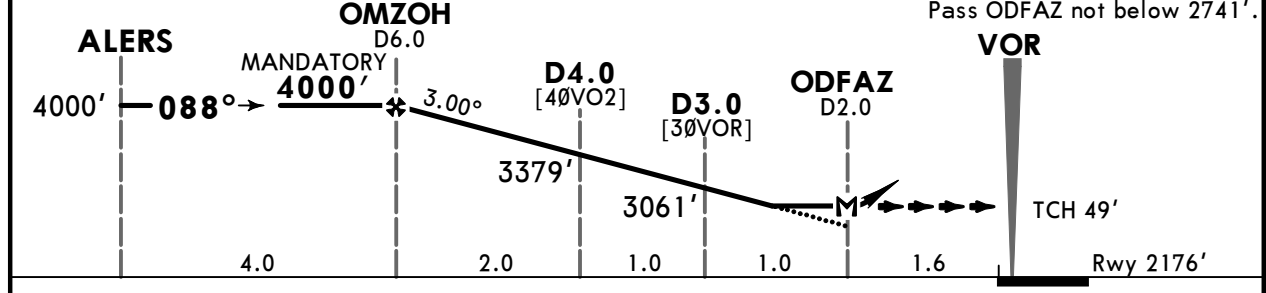
**JEPPESEN**  
21 FEB 25 **(13-1)**

# SAMARKAND, UZBEKISTAN VOR DME Rwy 09

D-ATIS <b>127.8</b>		SAMARKAND Approach <b>123.7</b>			SAMARKAND Tower <b>118.7</b>	
VOR SKD <b>115.0</b>	Final Apch Crs <b>088°</b>	OMZOH MANDATORY <b>4000'</b> (1824')	MDA(H) <b>2950'</b> (774')	Apt Elev 2223' Rwy 2176'		 MSA SKD VOR
<b>MISSED APCH:</b> Climb on 091° to AZTUM to cross at 3200' or above. Then turn LEFT onto 271° to GOSEV climbing to 4000'. Contact ATC. Deviation to the SOUTH is prohibited. Missed apch requires a minimum climb gradient of 5.2%(316'/NM) up to 3200'.						
Alt Set: hPa		Rwy Elev: 77 hPa	Trans level: FL080		Trans alt: 6000'	
1. Procedure restricted to MAX 250 KT. 2. Do not confuse active RWY 09/27 with closed RWY located South and parallel of RWY 09/27.						



SKD DME	4.0	3.0
ALTITUDE	3379'	3061'



Gnd speed-Kts	70	90	100	120	140	160	HIALS-II PAPI	MIN 3200' on 091°	AZTUM
Descent Angle	3.00°	372	478	531	637	743			
MAP at ODFAZ									

**State** STRAIGHT-IN LANDING

MDA(H) **2950'** (774')

ALS out

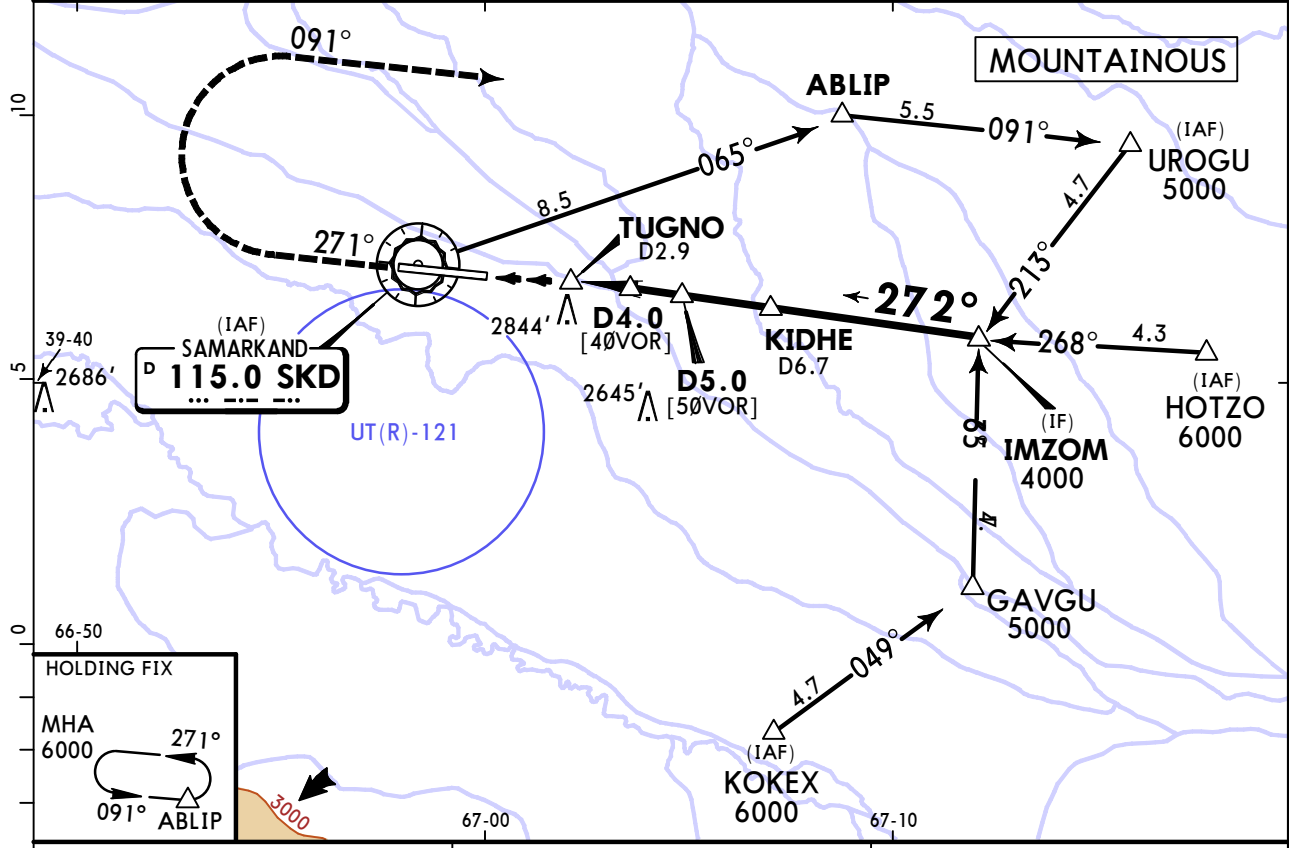
A	C/V3900m
B	
C	C/V4100m
D	

# UTSS/SKD SAMARKAND

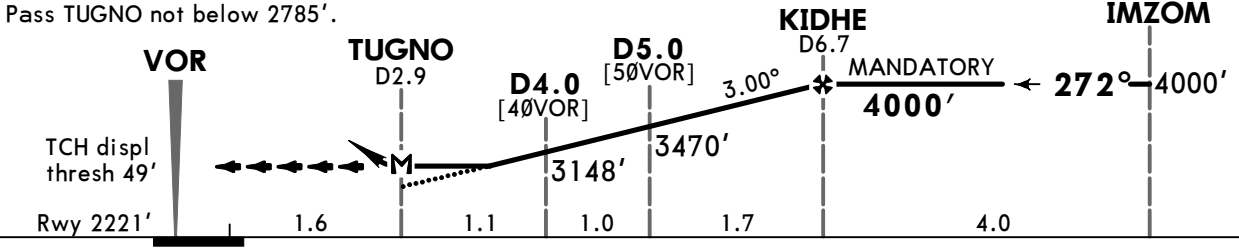
21 FEB 25 **(13-2)**

# SAMARKAND, UZBEKISTAN VOR DME Rwy 27

D-ATIS <b>127.8</b>		SAMARKAND Approach <b>123.7</b>			SAMARKAND Tower <b>118.7</b>	
VOR SKD <b>115.0</b>	Final Apch Crs <b>272°</b>	KIDHE MANDATORY <b>4000'</b> (1779')	MDA(H) <b>3140'</b> (919')	Apt Elev 2223' Rwy 2221'		
<b>MISSED APCH: Climb on 271° to 4000' or above, then turn RIGHT onto 091° to ABLIP and contact ATC.</b>						<p>MSA SKD VOR</p>
Alt Set: hPa		Rwy Elev: 79 hPa	Trans level: FL080	Trans alt: 6000'		
1. Procedure restricted to MAX 250 KT. 2. Do not confuse active RWY 09/27 with closed RWY located South and parallel of RWY 09/27.						



SKD DME	4.0	5.0
ALTITUDE	3148'	3470'



MAP at TUGNO						
<b>State</b>	STRAIGHT-IN LANDING					
	MDA(H) <b>3140'</b> (919')					
	ALS out					

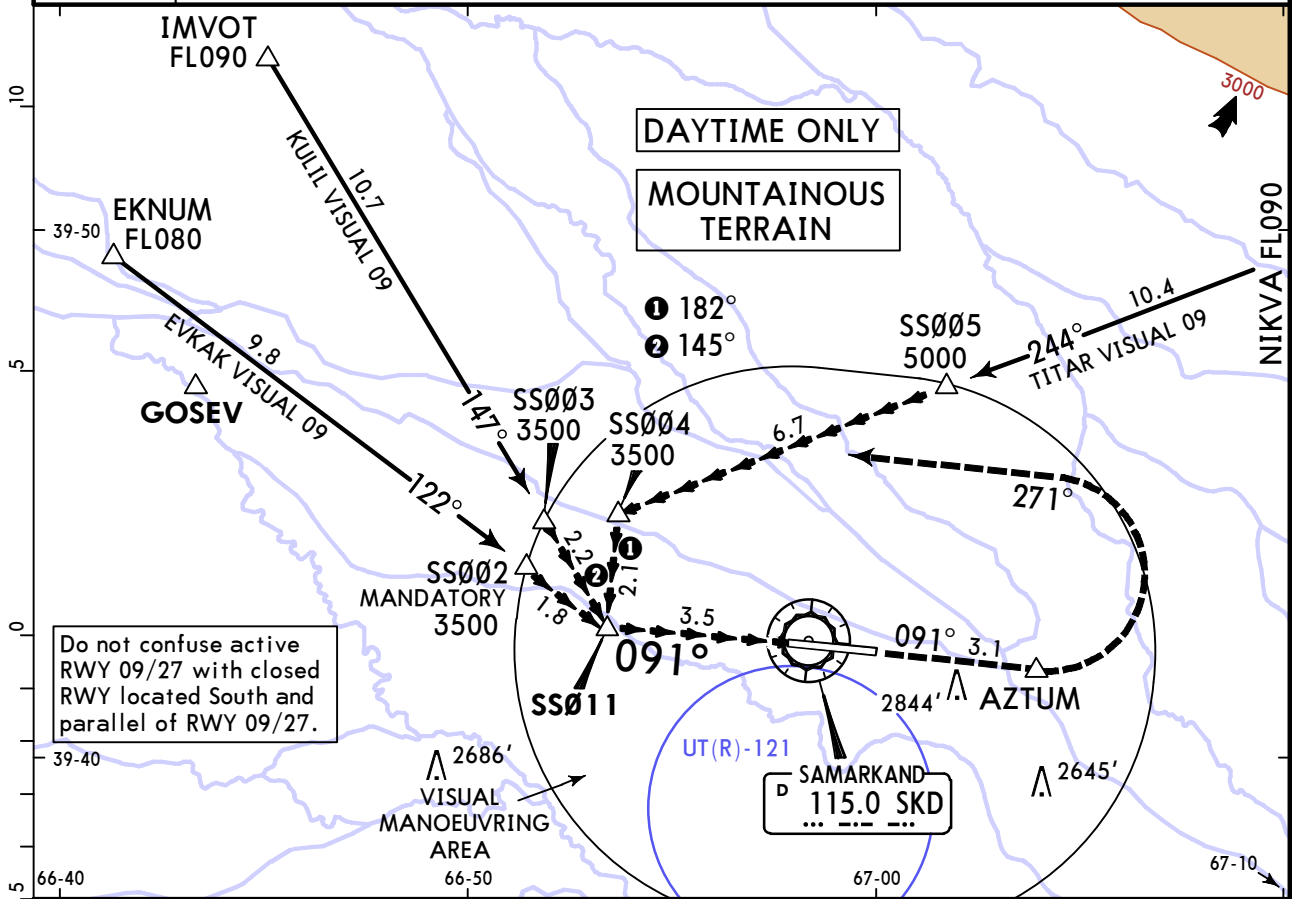
A	C/V4900m
B	
C	C/V5000m
D	

# UTSS/SKD SAMARKAND

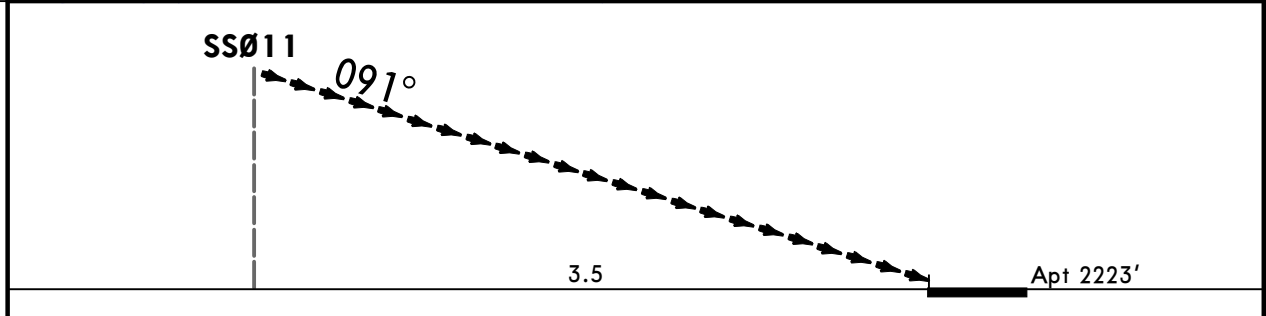
# JEPPESEN SAMARKAND, UZBEKISTAN VPT Rwy 09

21 FEB 25 19-10

D-ATIS <b>127.8</b>		SAMARKAND Approach <b>123.7</b>		SAMARKAND Tower <b>118.7</b>	
VISUAL	Final Apch Crs <b>091°</b>	No FAF	MDA(H) Refer to Minimums	Apt Elev 2223'	
<b>MISSED APCH:</b> Climb on 091° to AZTUM to cross at 3200' or above. Then turn LEFT onto 271° to GOSEV climbing to 4000'. Deviation to the SOUTH is prohibited. Missed apch requires a minimum climb gradient of 5.2%(316'/NM) up to 3200'.					
Alt Set: hPa		Apt Elev: 79 hPa		Trans level: FL080	
				Trans alt: 6000'	
1. RNAV required. 2. Procedure restricted to MAX 250 KT.					



Do not confuse active RWY 09/27 with closed RWY located South and parallel of RWY 09/27.



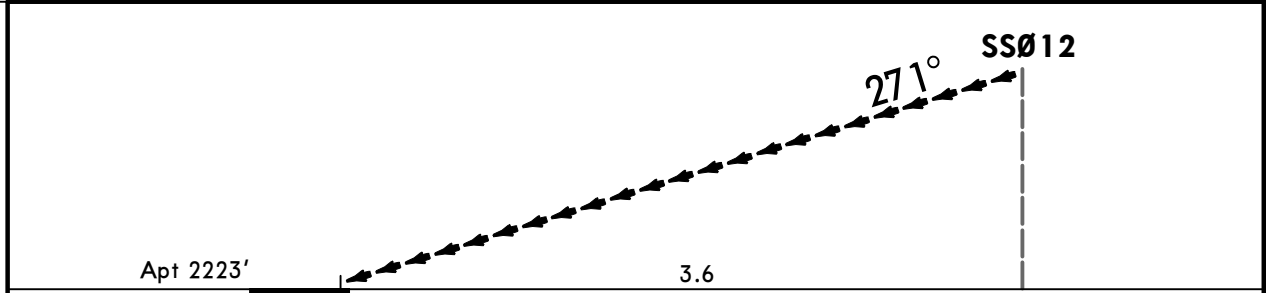
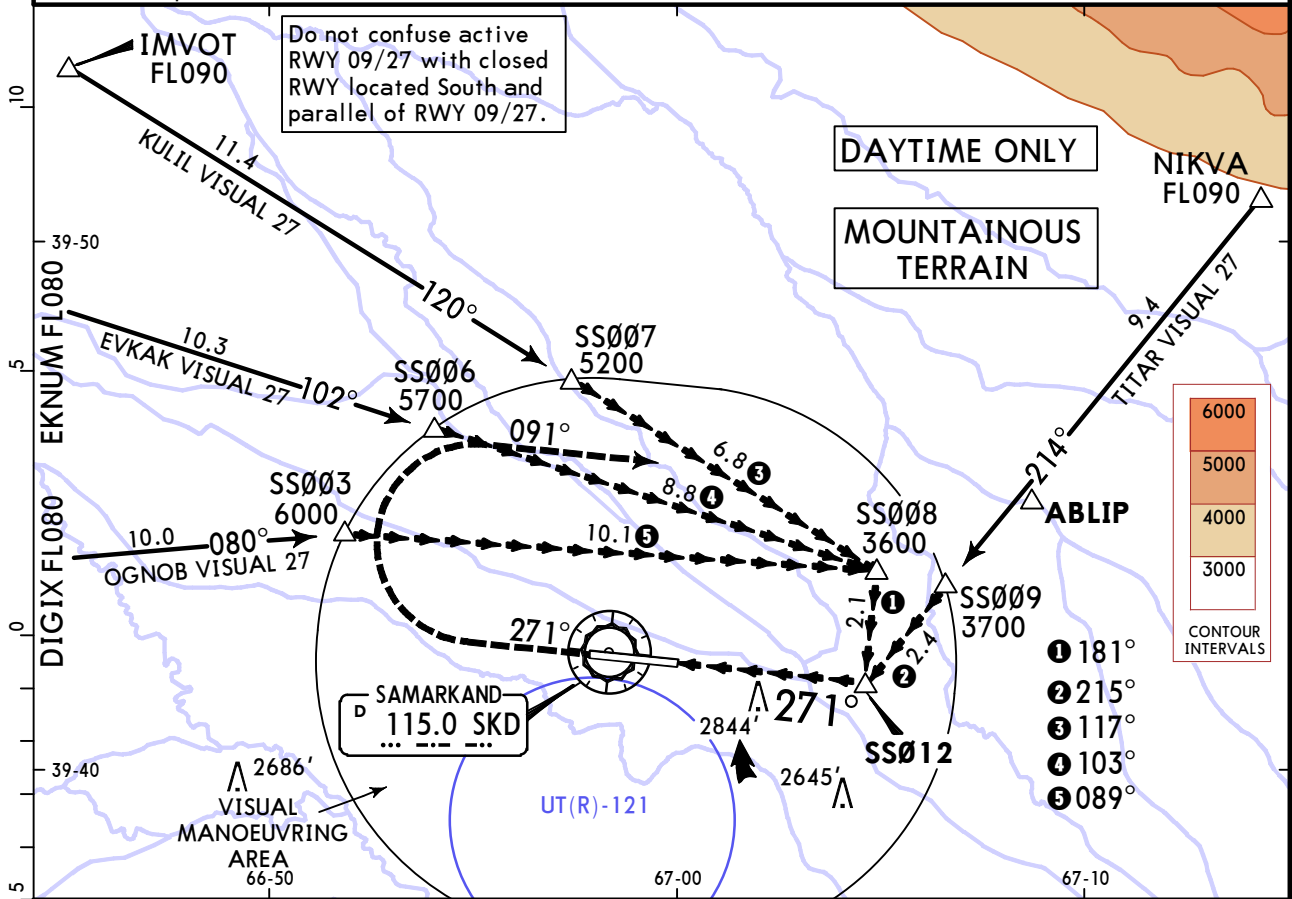
				HIALS-II PAPI	MIN <b>3200'</b> on <b>091°</b>	<b>AZTUM</b>
--	--	--	--	------------------	------------------------------------	--------------

State		LANDING	CEILING REQUIRED
A	Max KT 100	MDA(H) <b>3420'</b> (1244')	1350' - V5000m
B	135		
C	180	<b>3520'</b> (1344')	1450' - V5000m
D	205		

# UTSS/SKD SAMARKAND

# JEPPESEN SAMARKAND, UZBEKISTAN 21 FEB 25 (19-11) VPT Rwy 27

D-ATIS <b>127.8</b>		SAMARKAND Approach <b>123.7</b>		SAMARKAND Tower <b>118.7</b>	
VISUAL	Final Apch Crs <b>271°</b>	No FAF	MDA(H) Refer to Minimums	Apt Elev 2223'	
<b>MISSED APCH: Climb on 271° to 4000' or above, then turn RIGHT onto 091° to ABLIP and contact ATC.</b>					
Alt Set: hPa		Apt Elev: 79 hPa		Trans level: FL080	
				Trans alt: 6000'	
1. RNAV required. 2. Procedure restricted to MAX 250 KT.					



				HIALS PAPI	MIN 4000'	on 271°	091° RT	ABLIP
--	--	--	--	---------------	--------------	------------	------------	-------

State		LANDING		CEILING REQUIRED	
	Max KT	MDA(H)			
A	100	<b>3470'</b> (1249')		1350'	V5000m
B	135				
C	180	<b>3570'</b> (1349')		1450'	V5000m
D	205				

## Chart changes since cycle 04-2025

ADD = added chart, REV = revised chart, DEL = deleted chart.

ACT	PROCEDURE IDENT	INDEX	REV DATE	EFF DATE
<b>SAMARKAND, (SAMARKAND - UTSS)</b>				
REV	AIRPORT, AIRPORT INFO, TA...	10-9	21 Feb 2025	
REV	PARKING & COORDS, LVP	10-9A	21 Feb 2025	
REV	ILS DME RWY 09	11-1	21 Feb 2025	
REV	CAT II ILS DME RWY 09	11-1A	21 Feb 2025	
REV	ILS DME RWY 27	11-2	21 Feb 2025	
REV	VOR DME RWY 09	13-1	21 Feb 2025	
REV	VOR DME RWY 27	13-2	21 Feb 2025	
REV	VPT RWY 09	19-10	21 Feb 2025	
REV	VPT RWY 27	19-11	21 Feb 2025	

## TERMINAL CHART CHANGE NOTICES

No Chart Change Notices for Airport UTSS