

## List of pages in this Trip Kit

Trip Kit Index

Airport Information For UTST

Terminal Charts For UTST

Revision Letter For Cycle 05-2025

Change Notices

Notebook

## General Information

Location: TERMEZ UZB  
ICAO/IATA: UTST / TMJ  
Lat/Long: N37° 17.25', E067° 18.48'  
Elevation: 1028 ft

Airport Use: Public  
Daylight Savings: Not Observed  
UTC Conversion: -5:00 = UTC  
Magnetic Variation: 4.0° E

Fuel Types: Jet A-1  
Repair Types: Minor Airframe, Minor Engine  
Customs: Yes  
Airport Type: IFR  
Landing Fee: Yes  
Control Tower: Yes  
Jet Start Unit: No  
LLWS Alert: No  
Beacon: No

Sunrise: 0028 Z  
Sunset: 1446 Z

## Runway Information

Runway: 07  
Length x Width: 9843 ft x 148 ft  
Surface Type: concrete  
TDZ-Elev: 1014 ft  
Lighting: Edge  
Stopway: 197 ft

Runway: 25  
Length x Width: 9843 ft x 148 ft  
Surface Type: concrete  
TDZ-Elev: 1028 ft  
Lighting: Edge, ALS  
Stopway: 197 ft

## Communication Information

Termez Tower: 118.600 VHF-DF  
Termez Tranzit Operations: 131.225

UTST/TMJ  
TERMEZ

JEPPESEN  
12 MAY 23 10-2 Eff 18 May

TERMEZ, UZBEKISTAN

STAR

Apt Elev  
1028

Alt Set: hPa  
Trans level: FL080

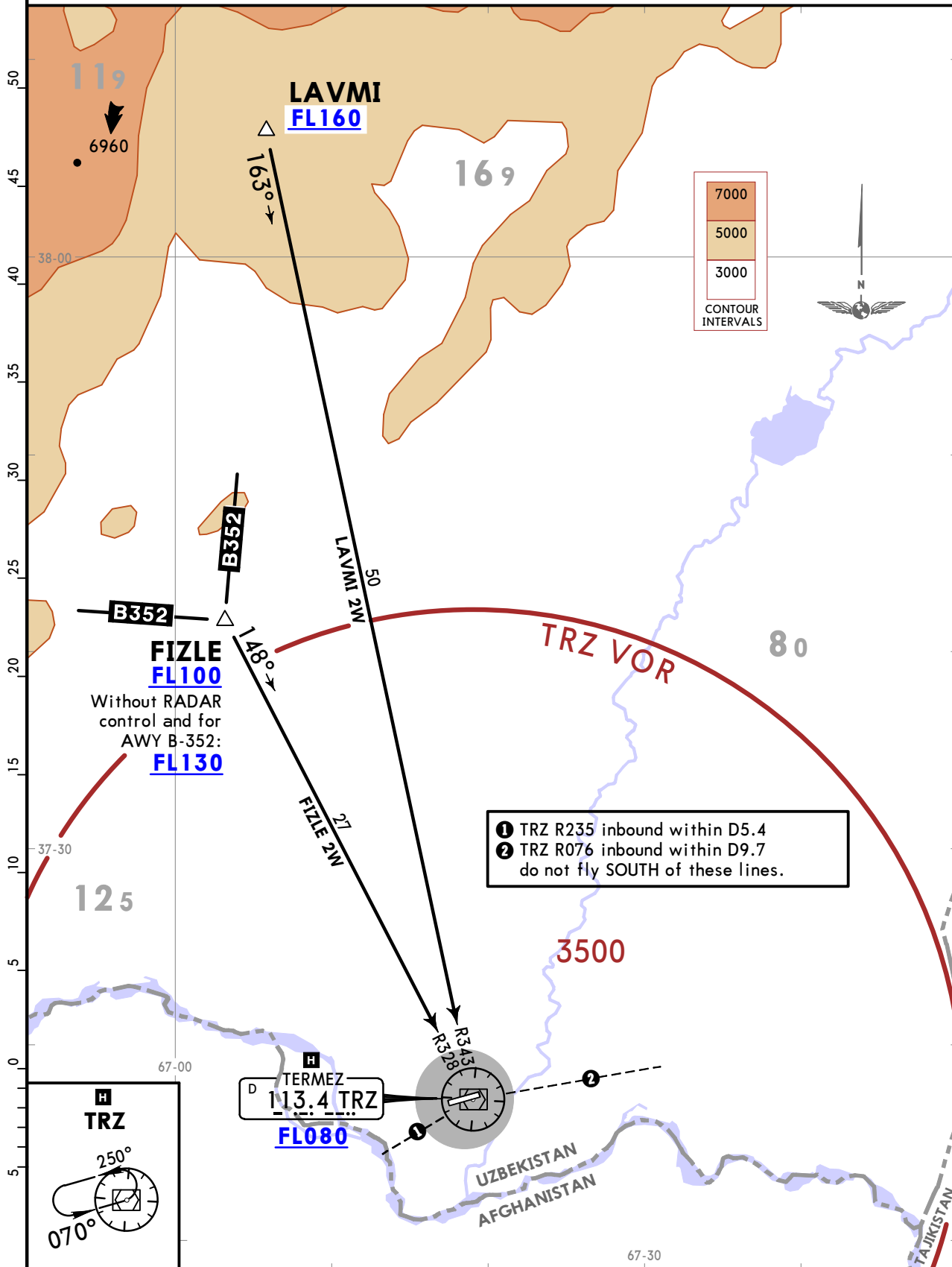
FIZLE 2W [FIZL2W], LAVMI 2W [LAVM2W]

ARRIVALS

(RWY 07)

ATC RADAR CONTROL MANDATORY

**SPEED: MAX 250 KT AT OR BELOW FL100 OR BY ATC**



UTST/TMJ  
TERMEZ

JEPPESEN  
12 MAY 23 (10-2A) Eff 18 May

TERMEZ, UZBEKISTAN

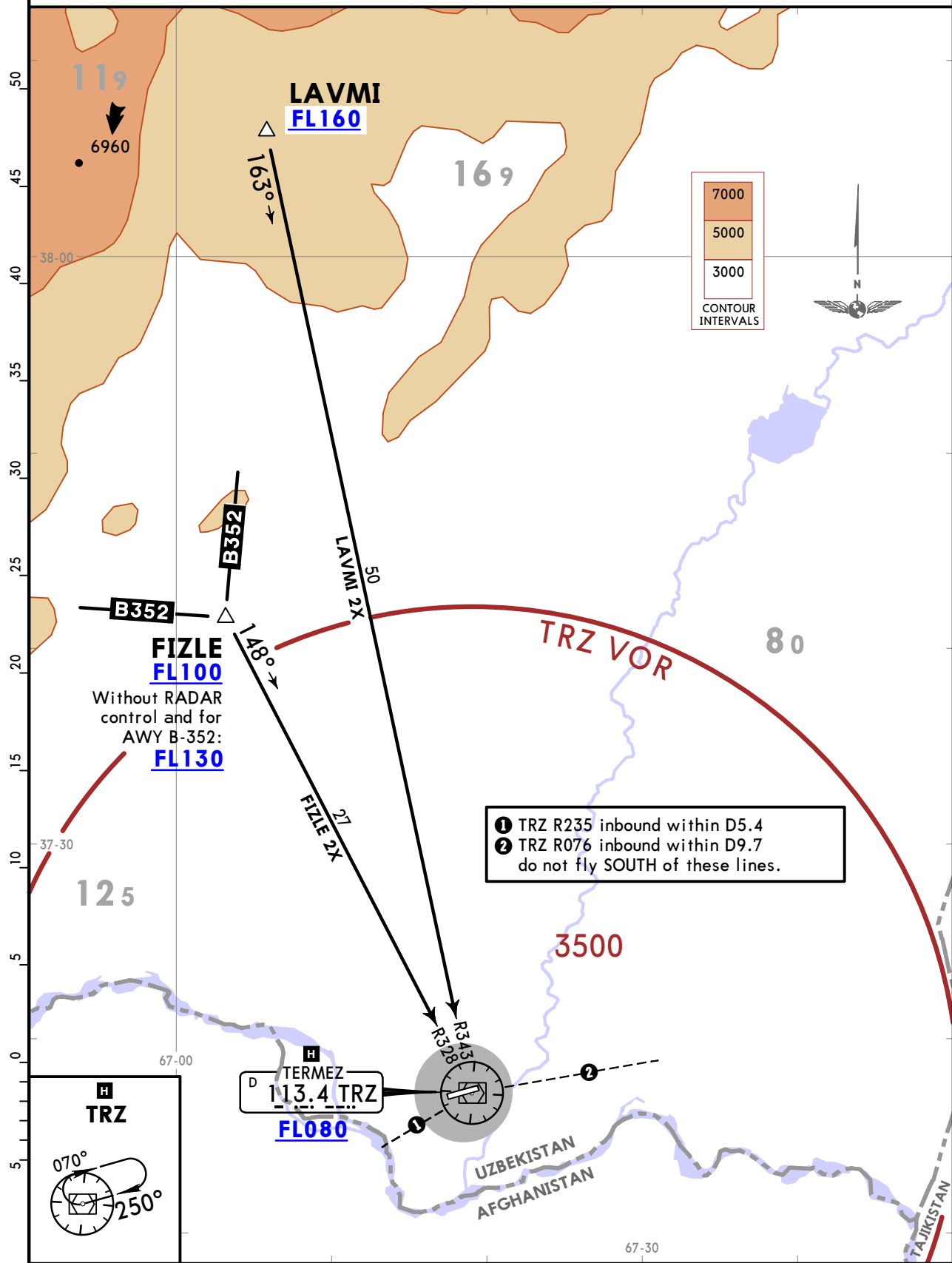
STAR

Apt Elev  
1028

Alt Set: hPa  
Trans level: FL080

FIZLE 2X [FIZL2X]  
LAVMI 2X [LAVM2X]  
ARRIVALS  
(RWY 25)

**SPEED: MAX 250 KT AT OR BELOW FL100 OR BY ATC**



UTST/TMJ  
TERMEZ

JEPPESEN  
12 MAY 23 (10-2B) Eff 18 May

TERMEZ, UZBEKISTAN  
STAR

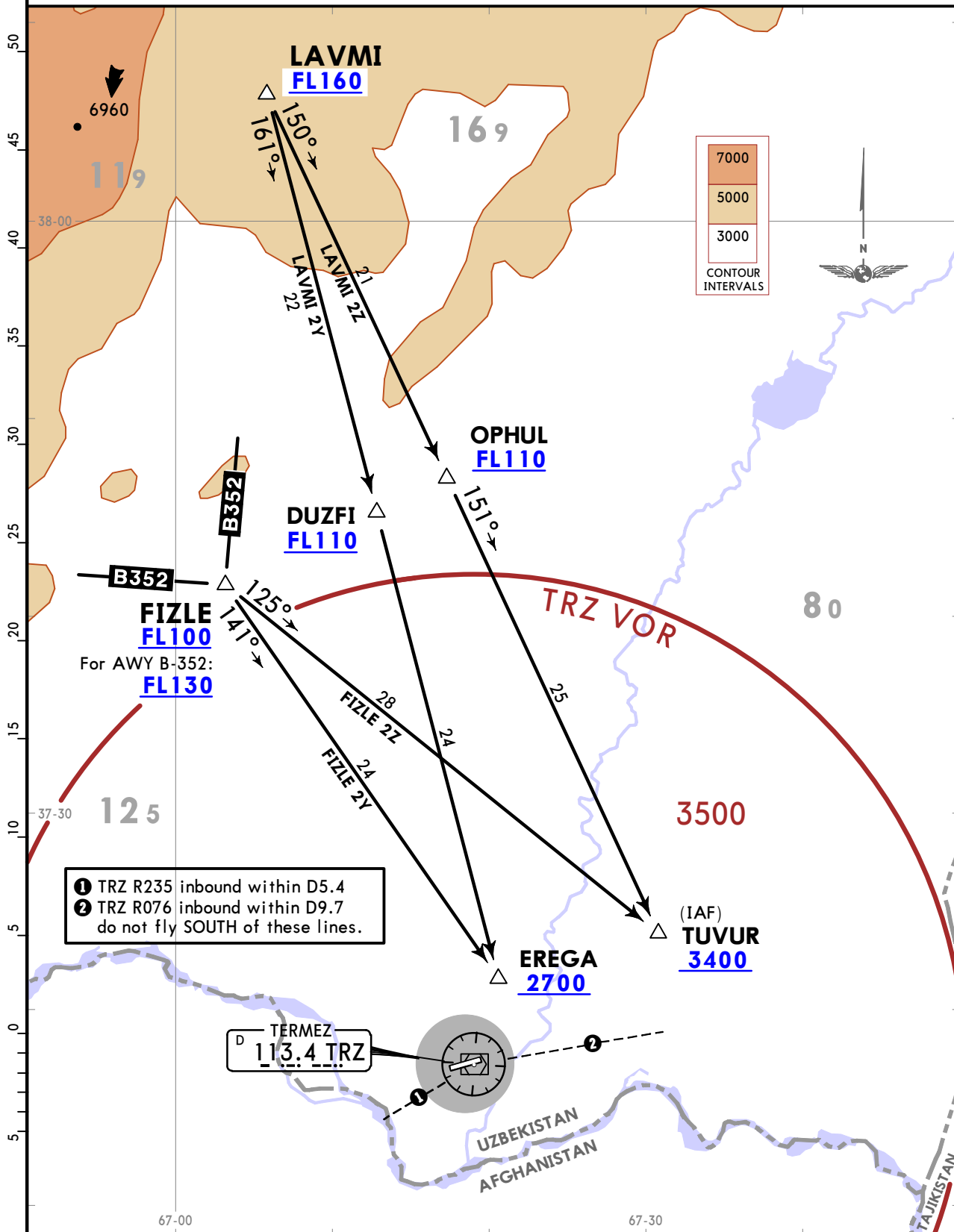
Apt Elev  
1028

Alt Set: hPa  
Trans level: FL080

FIZLE 2Y [FIZL2Y], FIZLE 2Z [FIZL2Z]  
LAVMI 2Y [LAVM2Y], LAVMI 2Z [LAVM2Z]  
ARRIVALS  
(ALL RWYS)

ATC RADAR CONTROL MANDATORY

**SPEED: MAX 250 KT AT OR BELOW FL100 OR BY ATC**



1 TRZ R235 inbound within D5.4  
2 TRZ R076 inbound within D9.7  
do not fly SOUTH of these lines.

TERMEZ  
D 113.4 TRZ

UTST/TMJ  
TERMEZ

JEPPESEN  
12 MAY 23 10-2C Eff 18 May

TERMEZ, UZBEKISTAN  
STAR

Apt Elev  
1028

Alt Set: hPa  
Trans level: FL080

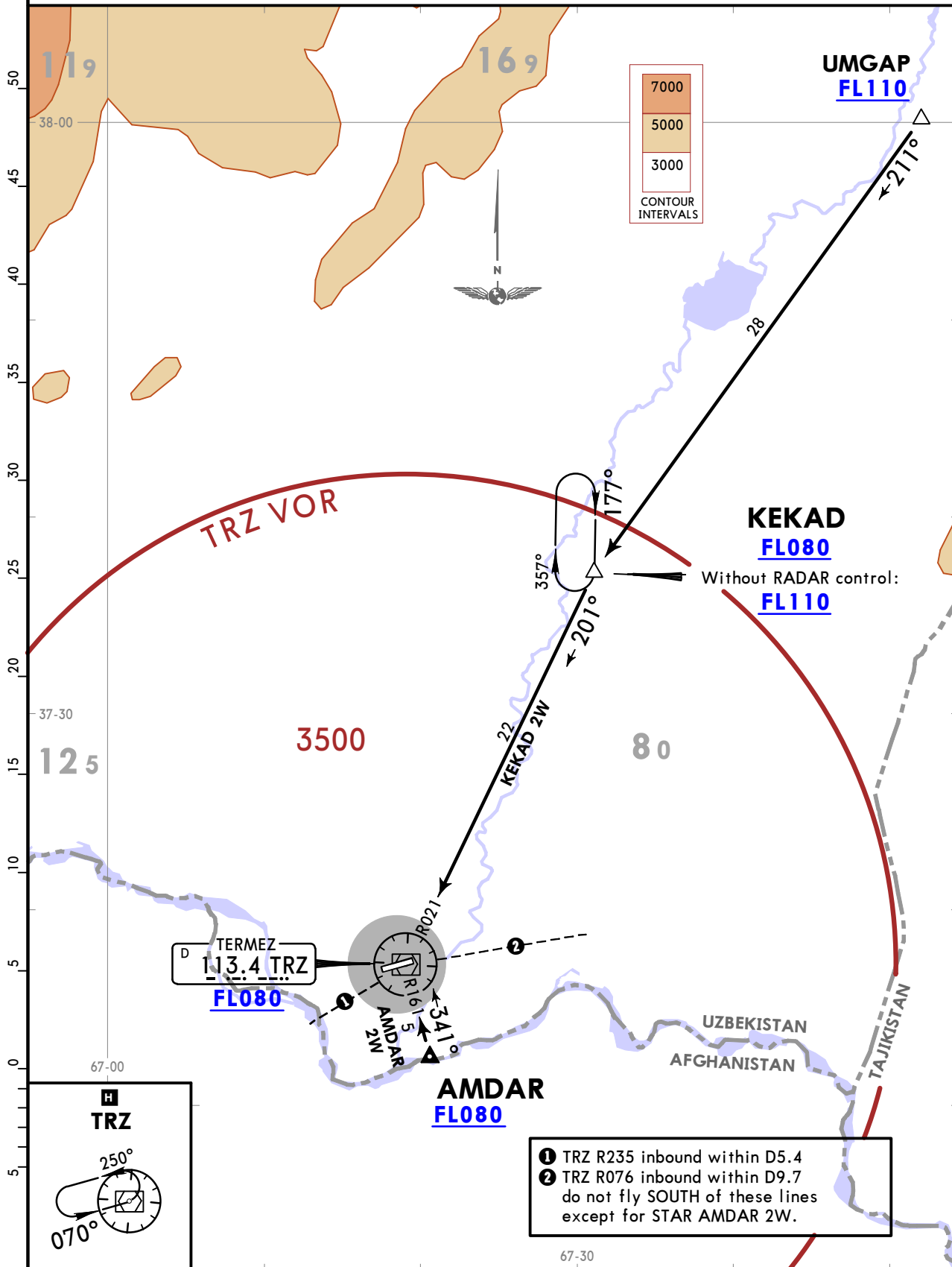
AMDAR 2W [AMDA2W], KEKAD 2W [KEKA2W]

ARRIVALS

(RWY 07)

ATC RADAR CONTROL MANDATORY

**SPEED: MAX 250 KT AT OR BELOW FL100 OR BY ATC**



UTST/TMJ  
TERMEZ

JEPPESEN  
12 MAY 23 (10-2D) Eff 18 May

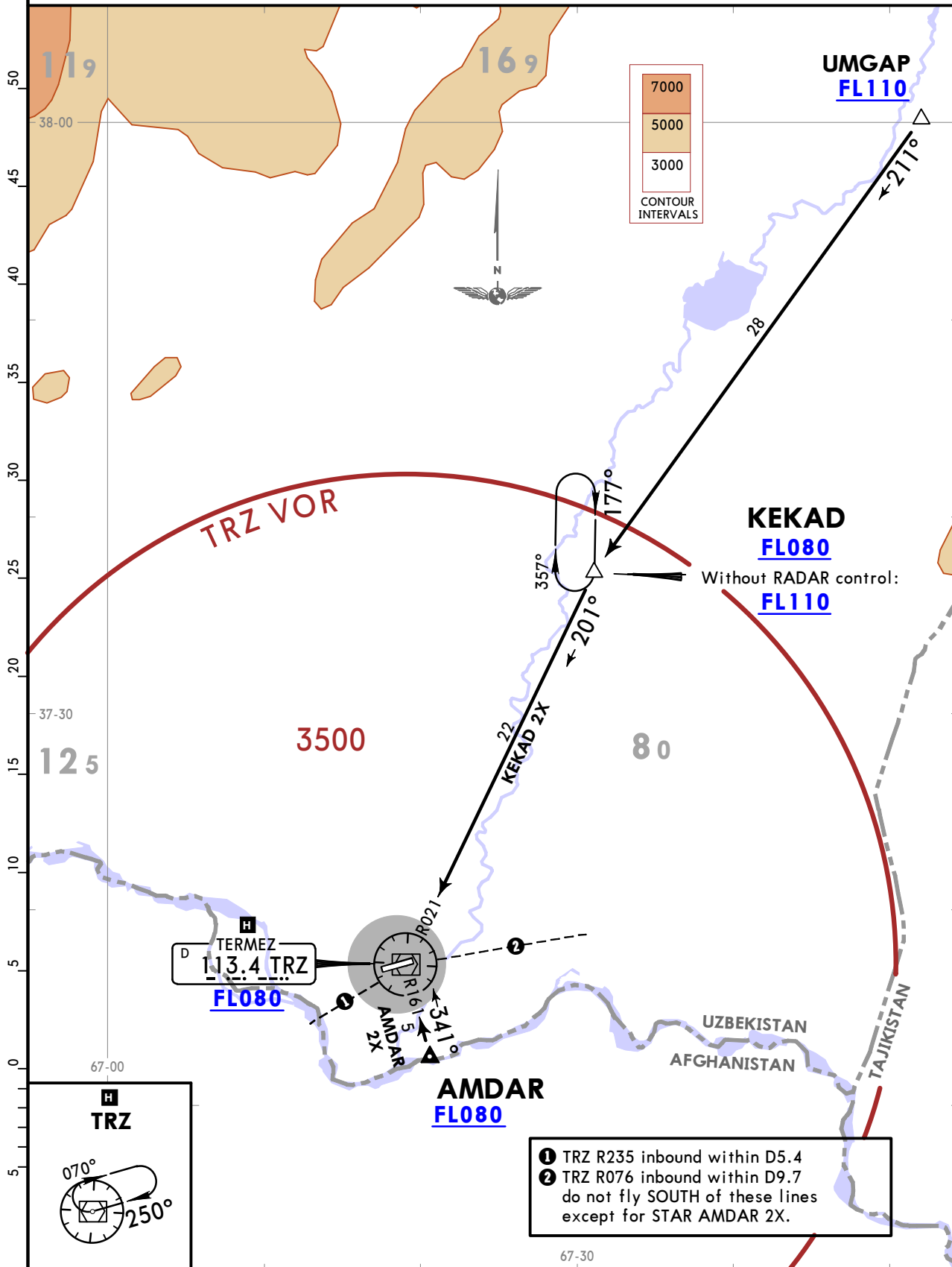
TERMEZ, UZBEKISTAN  
STAR

Apt Elev  
1028

Alt Set: hPa  
Trans level: FL080

AMDAR 2X [AMDA2X]  
KEKAD 2X [KEKA2X]  
ARRIVALS  
(RWY 25)

**SPEED: MAX 250 KT AT OR BELOW FL100 OR BY ATC**



- ① TRZ R235 inbound within D5.4
- ② TRZ R076 inbound within D9.7 do not fly SOUTH of these lines except for STAR AMDAR 2X.

UTST/TMJ  
TERMEZ

JEPPESEN  
12 MAY 23 10-2E Eff 18 May

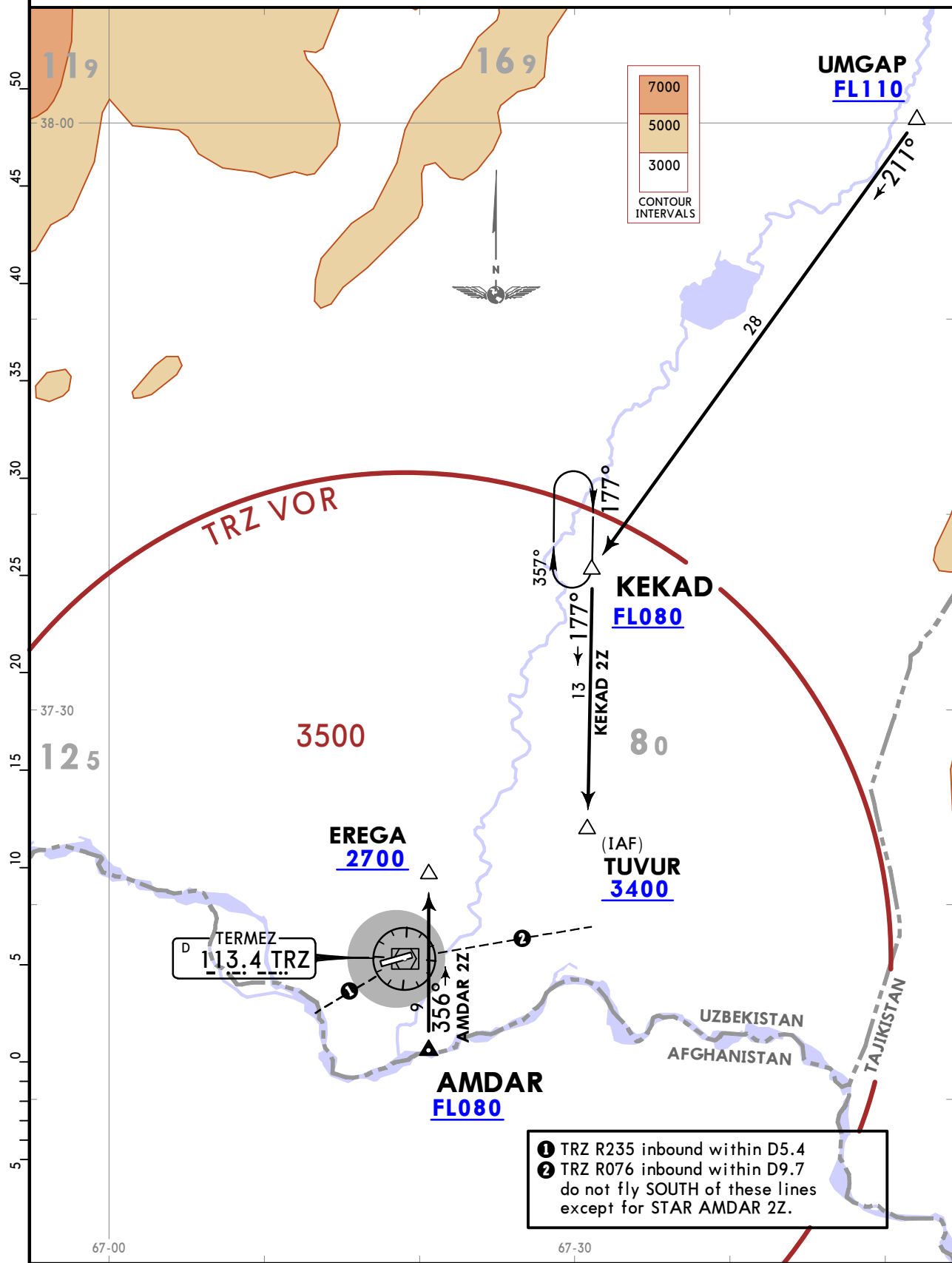
TERMEZ, UZBEKISTAN

STAR

Apt Elev 1028  
Alt Set: hPa  
Trans level: FL080

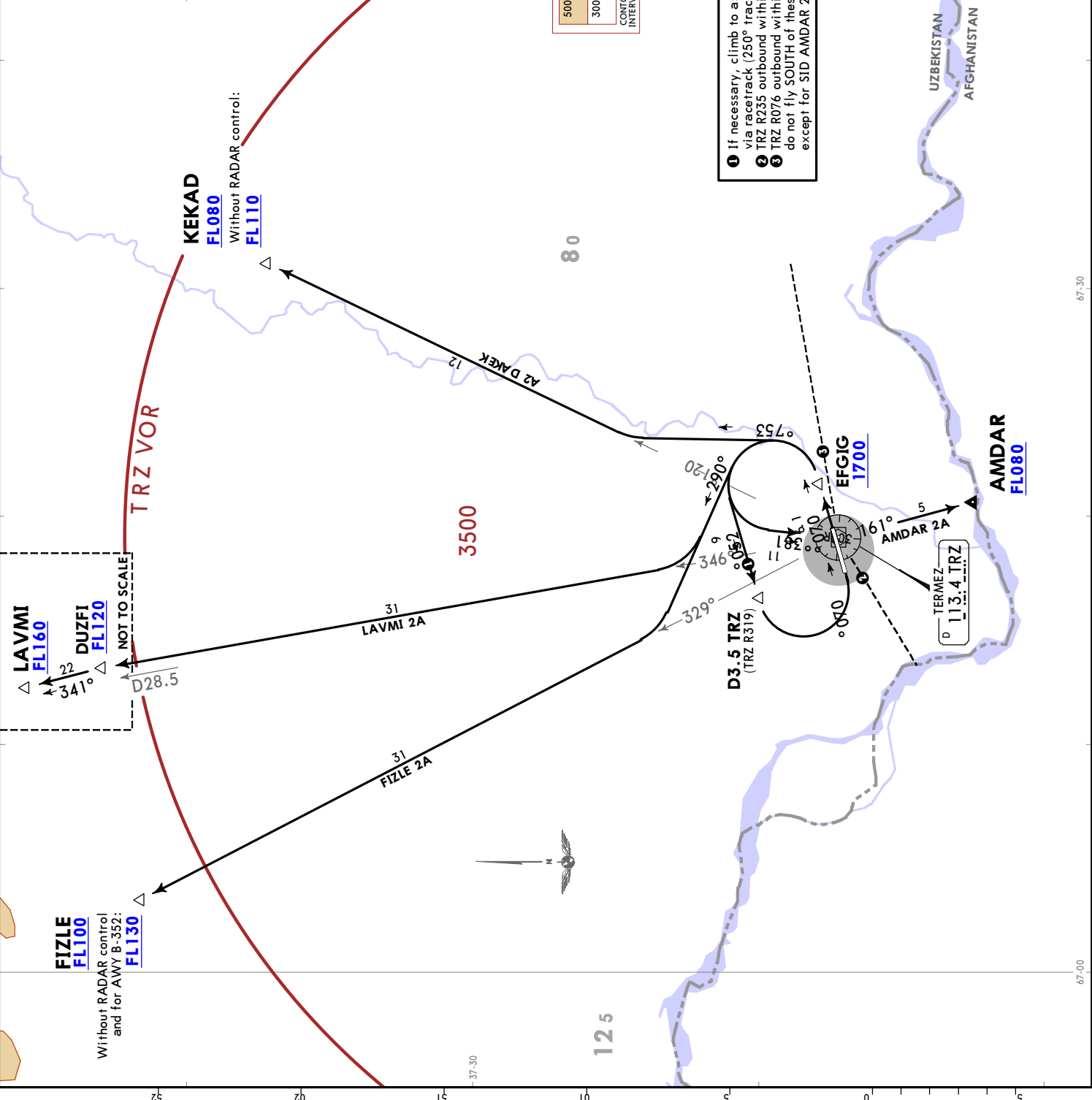
AMDAR 2Z [AMDA2Z], KEKAD 2Z [KEKA2Z]  
ARRIVALS  
(ALL RWYS)  
ATC RADAR CONTROL MANDATORY

**SPEED: MAX 250 KT AT OR BELOW FL100 OR BY ATC**



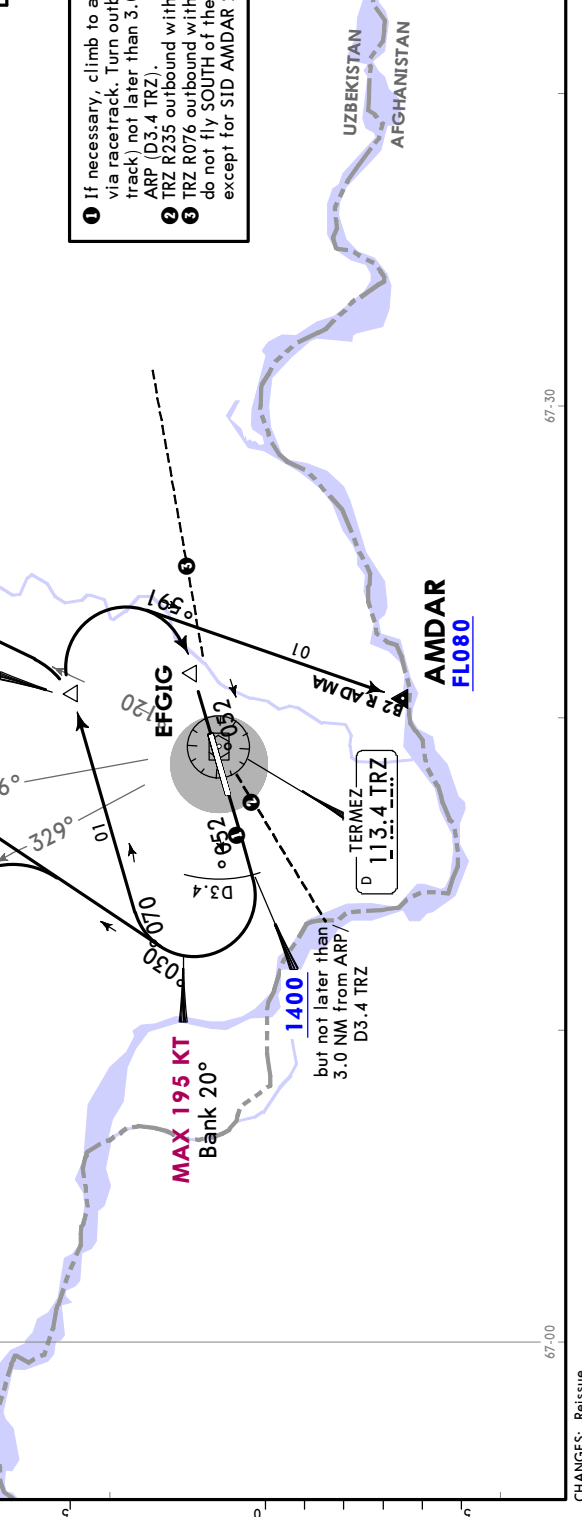
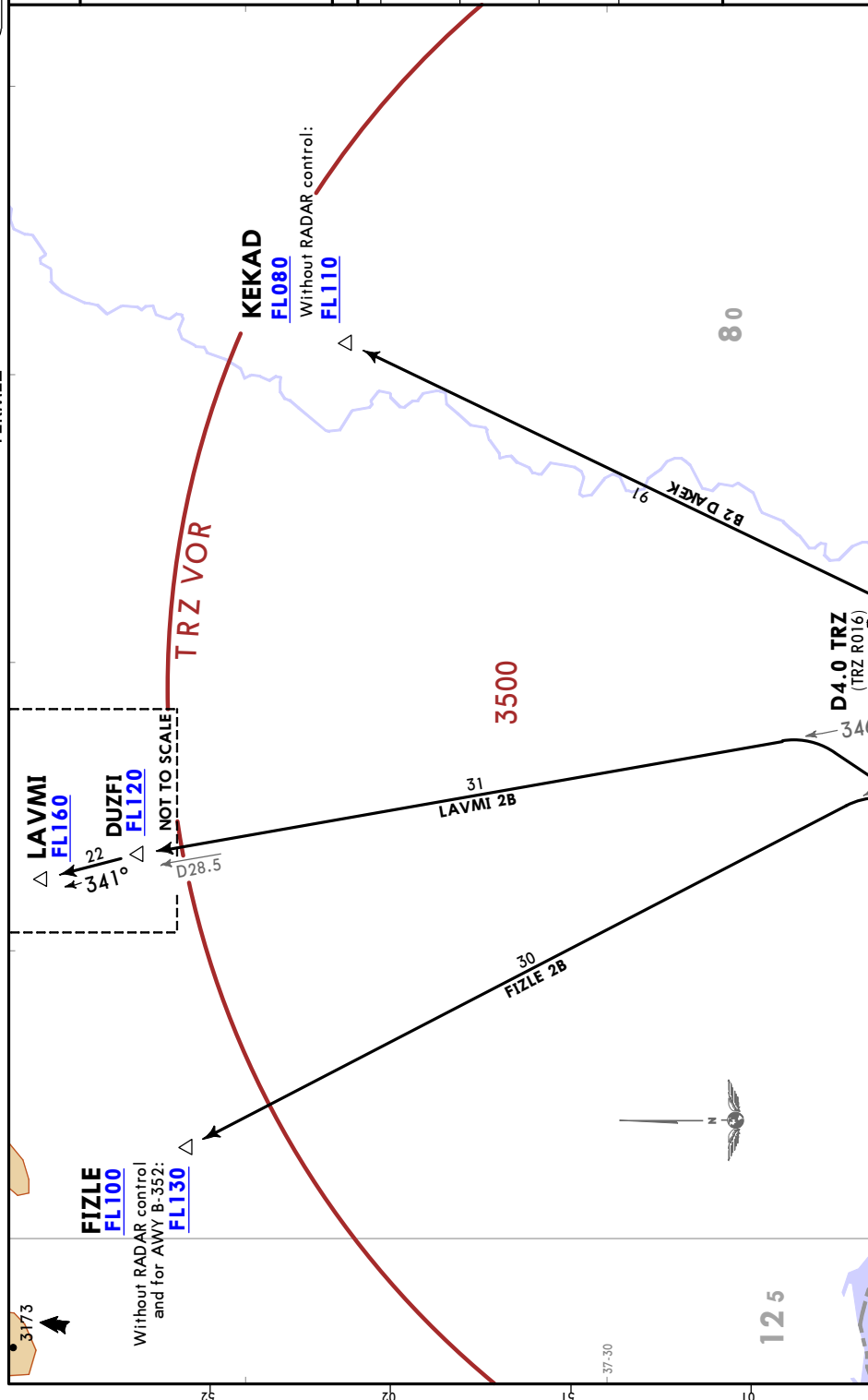
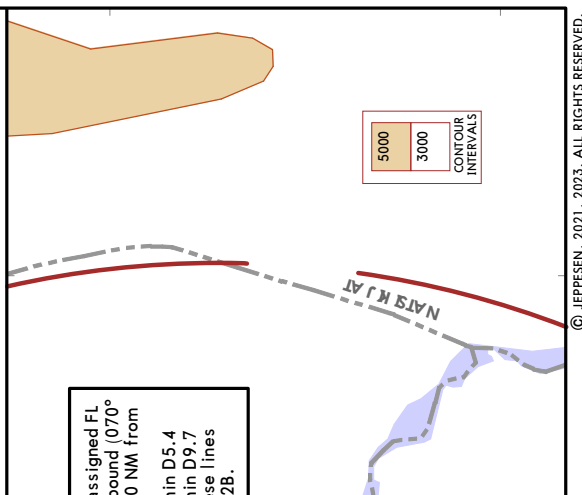
- ① TRZ R235 inbound within D5.4
- ② TRZ R076 inbound within D9.7  
do not fly SOUTH of these lines  
except for STAR AMDAR 2Z.

Apt Elev 1028	Trans alt: 6000
<b>AMNDAR 2A [AMDA2A]</b> <b>FIZLE 2A [FIZL2A]</b> <b>KEKAD 2A [KEKA2A]</b> <b>LAVMI 2A [LAVM2A]</b> <b>DEPARTURES (RWY 07)</b> <b>SPEED: MAX 250 KT BELOW FL100</b>	
Initial climb clearance <b>FL080</b> or by ATC	
ROUTING	
<b>AMNDAR 2A</b>	Climb on 070° track to EFGIG, turn LEFT to TRZ, turn LEFT, 161° track to AMDAR.
<b>FIZLE 2A</b>	Climb on 070° track to EFGIG, turn LEFT, 290° track, turn RIGHT, intercept TRZ R329 to FIZLE.
<b>KEKAD 2A</b>	Climb on 070° track to EFGIG, turn LEFT, 357° track, turn RIGHT, intercept TRZ R021 to KEKAD.
<b>LAVMI 2A</b>	Climb on 070° track to EFGIG, turn LEFT, 290° track, turn RIGHT, intercept TRZ R346 to DUZFI, turn LEFT, 341° track to LAVMI.



1 If necessary, climb to assigned FL via race track (250° track outbound)  
 2 TRZ R335 outbound within D5.4  
 3 TRZ R076 outbound within D9.7 do not fly SOUTH of these lines except for SID AMNDAR 2A.

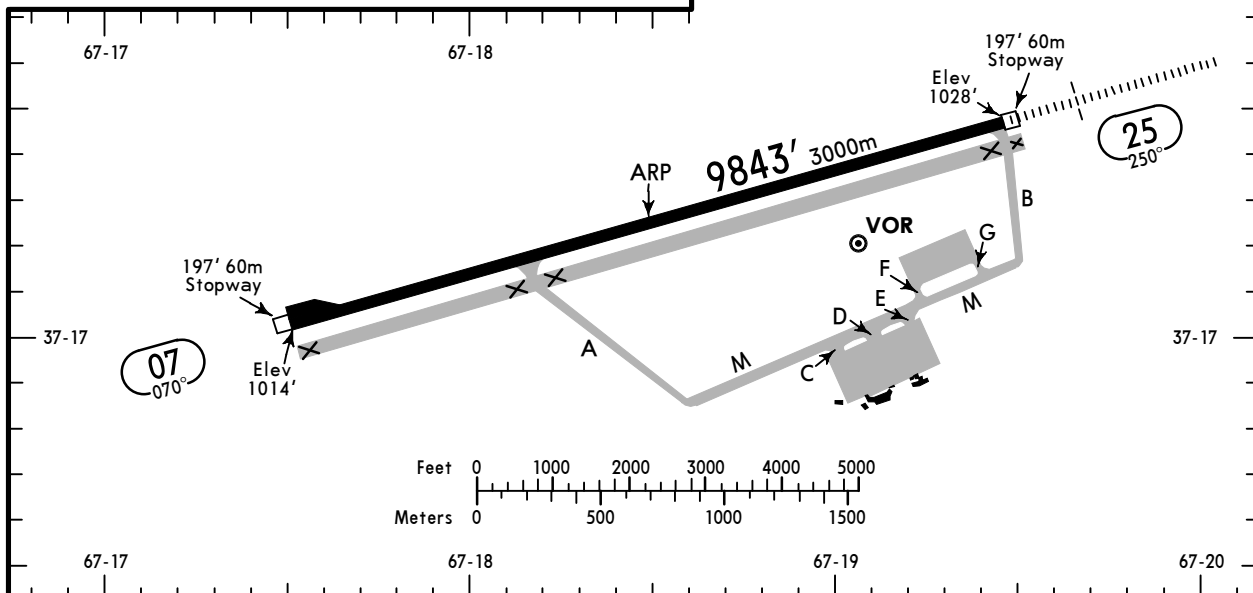
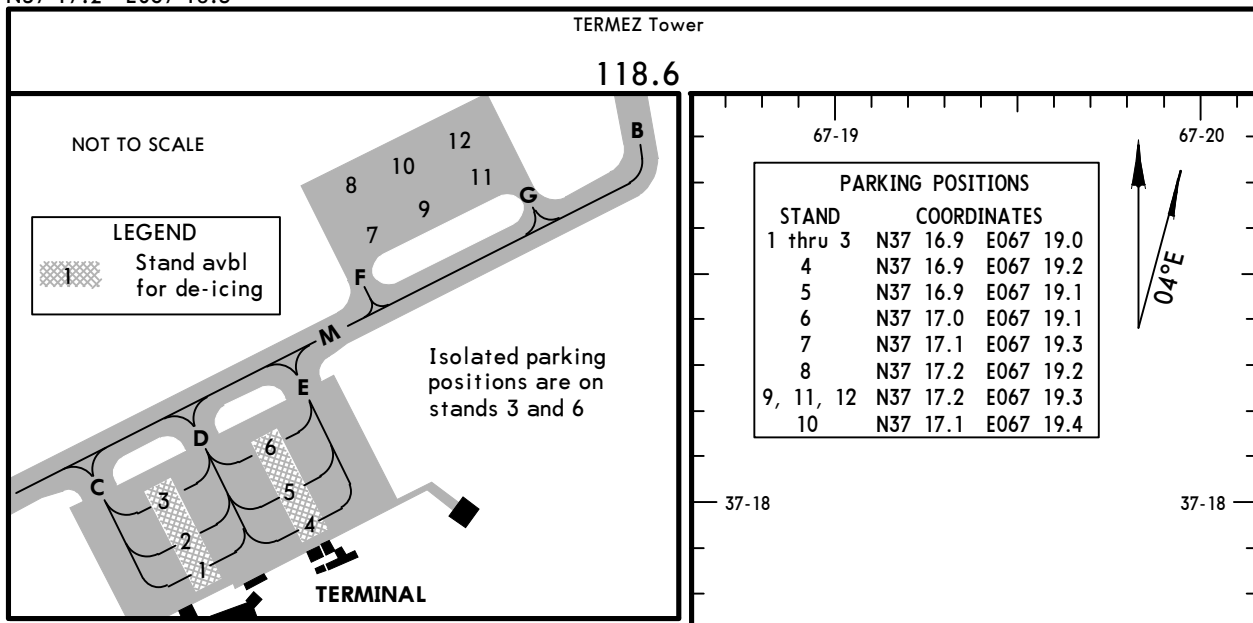
Apt Elev 1028		Trans alt: 6000															
<p><b>AMDA2B [AMDA2B]</b>  <b>FIZL2B [FIZL2B]</b>  <b>KEKA2B [KEKA2B]</b>  <b>LAVM2B [LAVM2B]</b>  <b>DEPARTURES (RWY 25)</b>  <b>SPEED: MAX 250 KT BELOW FL100</b></p>																	
Initial climb clearance <b>FL080 or by ATC</b>																	
<b>ROUTING</b>																	
<b>AMDA2B</b>	Climb on 250° track, at 1400, but not later than 3.0 NM from ARP (D3.4 TRZ) turn RIGHT, 070° track to D4.0 TRZ, turn RIGHT, 195° track to AMDAR.																
<b>FIZL2B</b>	Climb on 250° track, at 1400, but not later than 3.0 NM from ARP (D3.4 TRZ) turn RIGHT, 030° track, turn LEFT, intercept TRZ R329 to FIZL.																
<b>KEKA2B</b>	Climb on 250° track, at 1400, but not later than 3.0 NM from ARP (D3.4 TRZ) turn RIGHT, 070° track, turn LEFT, intercept TRZ R021 to KEKAD.																
<b>LAVM2B</b>	Climb on 250° track, at 1400, but not later than 3.0 NM from ARP (D3.4 TRZ) turn RIGHT, 030° track, intercept TRZ R346 to DUZFI, turn LEFT, 341° track to LAVMI.																
<p>These SIDs require a minimum climb gradient of 3.7% up to 2500.</p> <table border="1"> <tr> <td>Gnd speed-KT</td> <td>75</td> <td>100</td> <td>150</td> <td>200</td> <td>250</td> <td>300</td> </tr> <tr> <td>3.7% V/V (fpm)</td> <td>281</td> <td>375</td> <td>562</td> <td>749</td> <td>937</td> <td>1124</td> </tr> </table>				Gnd speed-KT	75	100	150	200	250	300	3.7% V/V (fpm)	281	375	562	749	937	1124
Gnd speed-KT	75	100	150	200	250	300											
3.7% V/V (fpm)	281	375	562	749	937	1124											



**UTST/TMJ**  
 Apt Elev **1028'**  
 N37 17.2 E067 18.5

**JEPPesen**  
 31 JAN 25 **(10-9)**

**TERMEZ, UZBEKISTAN**  
**TERMEZ**



**ADDITIONAL RUNWAY INFORMATION**

RWY	USABLE LENGTHS				WIDTH
	LANDING BEYOND		TAKE-OFF		
	Threshold	Glide Slope			
07	HIRL (60m)	RVR		①	148'
25	HIRL (60m) HIALS PAPI-L (angle 3.0°)	RVR	8871' 2704m	②	45m

**① TAKE-OFF RUN AVAILABLE**

**RWY 07:**

From rwy head 9843' (3000m)  
 twy A int 6365' (1940m)

**②** In the cases of icing of an ACFT, or slush, snow and ice on the RWY, retracting of landing gear and flaps after take-off to be performed not earlier than 1.6 NM from ARP, if it is not in contradiction to the AFM and if it is no threat for flight safety.

State	TAKE-OFF ①		
	RL & RCLM		RCLM (DAY only)
	DAY	NIGHT	
A	R/V250m		R/V500m
B	R/V250m		
C	R/V300m		
D	R/V300m		

① Rwy 25 min climb gradient 3.7% until 2500', otherwise: ceil 2340', VIS 3000m.

UTST/TMJ



**EASA AIR OPS**  
**TERMEZ, UZBEKISTAN**  
 TERMEZ

STRAIGHT-IN RWY		A	B	C	D
<b>07</b>	① VOR DME	<b>1440'</b> (426') C/V2700m	<b>1440'</b> (426') C/V2700m	<b>1440'</b> (426') C/V2900m	<b>1440'</b> (426') C/V2900m
<b>25</b>	① ILS	<b>1228'</b> (200')	<b>1228'</b> (200')	<b>1228'</b> (200')	<b>1228'</b> (200')
	FULL	R/V750m	R/V750m	R/V750m	R/V750m
	ALS out	R/V1200m	R/V1200m	R/V1200m	R/V1200m
	LOC	NOT AUTH	NOT AUTH	NOT AUTH	NOT AUTH
	① ② VOR DME	<b>1460'</b> (432') C/V1800m	<b>1460'</b> (432') C/V1800m	<b>1460'</b> (432') C/V2200m	<b>1460'</b> (432') C/V2200m

① Continuous Descent Final Approach.

② Missed apch climb gradient mim 3.7% up to 2500'.

CIRCLE-TO-LAND ③ ④	100 KT	135 KT	180 KT	205 KT
⑤ to rwy 07 to rwy 25	<b>1520'</b> (506')	<b>1520'</b> (506')	<b>1720'</b> (706')	<b>1720'</b> (706')
	<b>1530'</b> (502') ceil 2300' - V5000m	<b>1530'</b> (502') ceil 2300' - V5000m	<b>1730'</b> (702') ceil 2300' - V5000m	<b>1730'</b> (702') ceil 2300' - V5000m

③ VPT.

④ DAY only.

⑤ Circling height based on rwy 07 threshold elev of 1014'.

TAKE-OFF ⑥			
	RL & RCLM		RCLM (DAY only)
	DAY	NIGHT	
A	R/V250m		R/V500m
B			
C			
D	R/V300m		

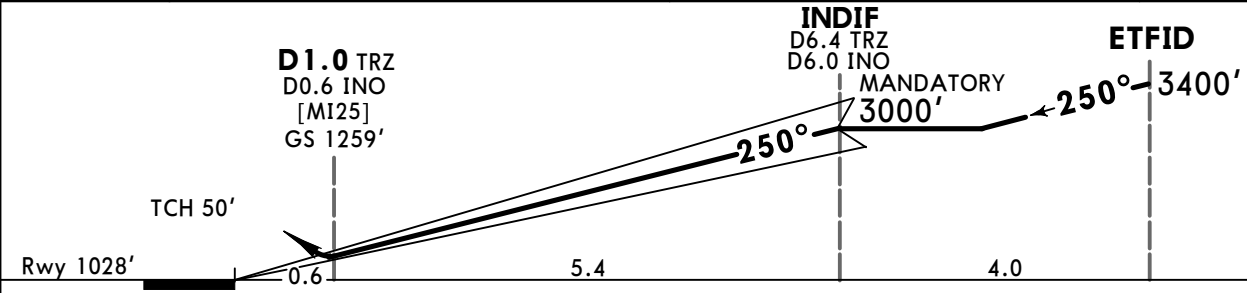
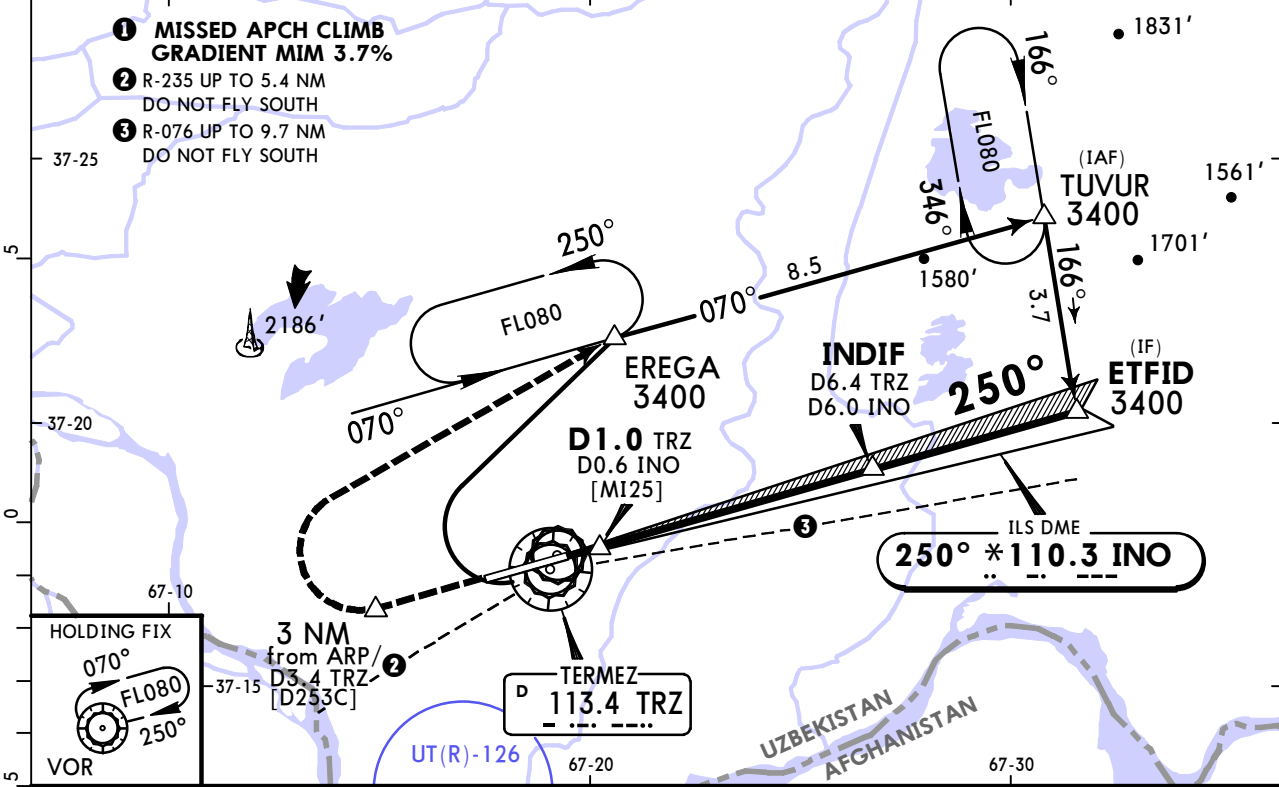
⑥ Rwy 25 mim climb gradient 3.7% until 2500', otherwise: ceil 2340', VIS 3000m.

# UTST/TMJ TERMEZ

**JEPPESEN**  
5 MAY 23 **11-1** Eff 18 May

# TERMEZ, UZBEKISTAN ILS DME Rwy 25

TERMEZ Tower					
118.6					
LOC INO <b>*110.3</b>	Final Apch Crs <b>250°</b>	INDIF MANDATORY <b>3000'</b> (1972')	ILS DA(H) <b>1228'</b> (200')	Apt Elev 1028' Rwy 1028'	<div style="border: 1px solid black; border-radius: 50%; width: 100px; height: 100px; margin: 0 auto;"></div> <p>3500</p> <p>MSA TRZ VOR</p>
<p><b>MISSED APCH:</b> Climb to 1400', but not later than 3.0 NM from ARP (D3.4 TRZ), then turn RIGHT (MIM BANK 20°, MAX 195 KT) to EREGA climbing to 3400' or above, then according to chart, or as directed.</p>					
Alt Set: hPa		Rwy Elev: 37 hPa		Trans level: FL080	
				Trans alt: 6000'	
<p>1. ILS DME reads zero at rwy 25 threshold. 2. Do not confuse active RWY 07/25 with closed RWY south of and parallel with RWY 07/25.</p>					



Gnd speed-Kts	70	90	100	120	140	160	HIALS PAPI	Refer to Missed Apch above
GS	3.00°	372	478	531	637	849		

**State** STRAIGHT-IN LANDING ILS  
 Missed apch climb gradient mim 3.7% up to 2500'  
 DA(H) **1228'**(200')

	FULL	ALS out
A		
B		
C	R/V750m	R/V1200m
D		

PANS OPS

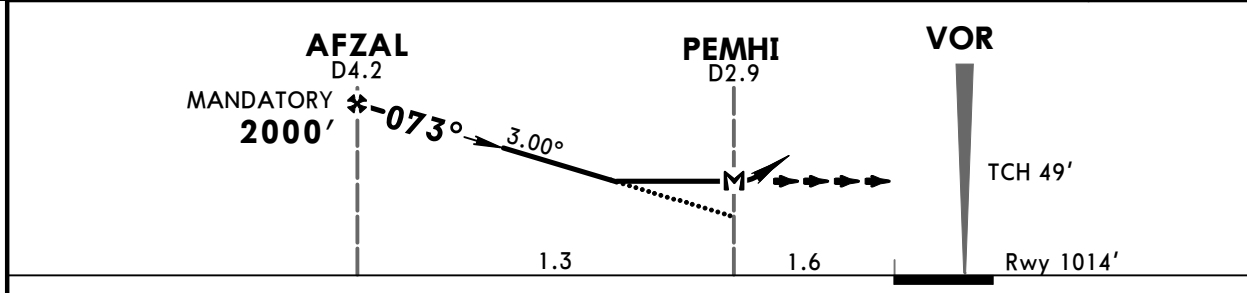
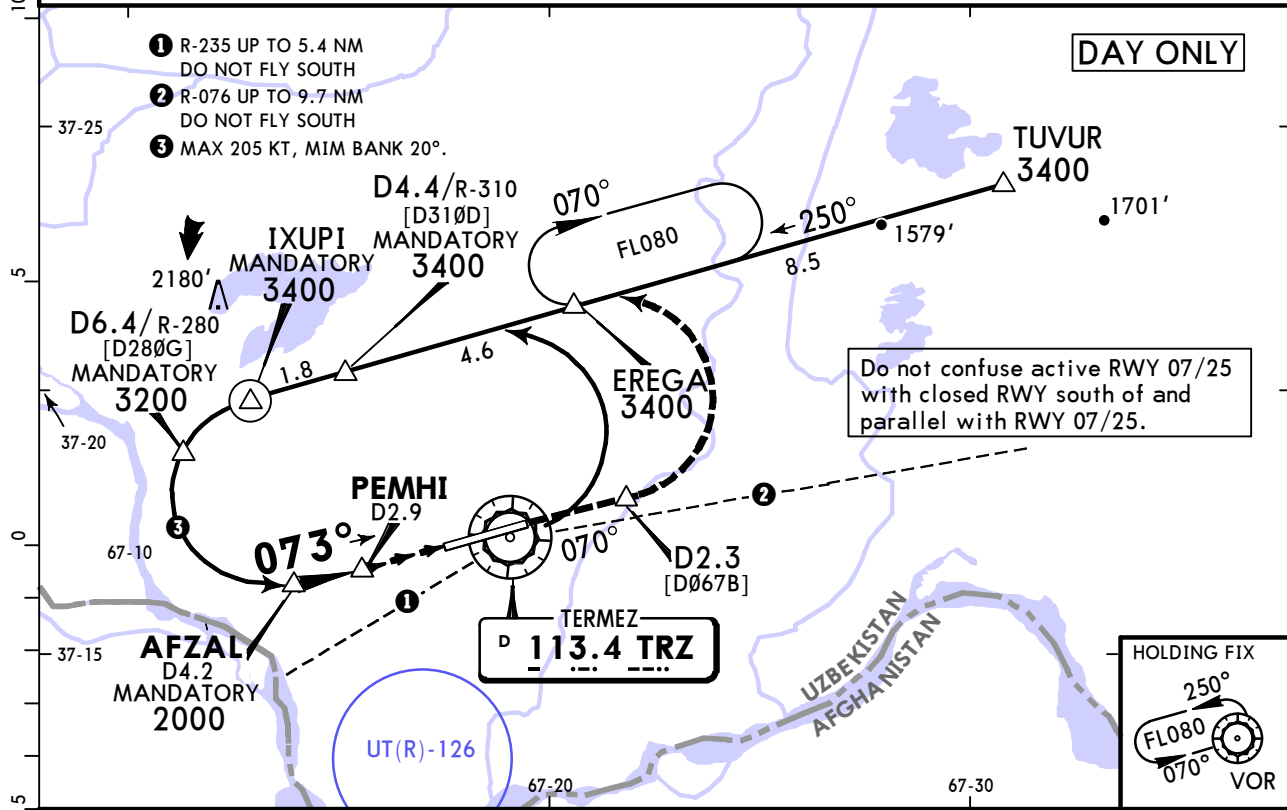
UTST/TMJ  
TERMEZ

JEPPESEN  
6 JAN 23 (13-1)

TERMEZ, UZBEKISTAN  
VOR DME Rwy 07

TERMEZ Tower					3500
118.6					
VOR TRZ <b>113.4</b>	Final Apch Crs <b>073°</b>	AFZAL MANDATORY <b>2000'</b> (986')	MDA(H) <b>1440'</b> (426')	Apt Elev 1028' Rwy 1014'	MSA TRZ VOR
<b>MISSED APCH:</b> Climb on 070° to 1700' or D2.3 (whichever is later), then turn LEFT to EREGA climbing to 3400', then according to chart, or as directed.					

Alt Set: hPa Rwy Elev: 37 hPa Trans level: FL080 Trans alt: 6000'  
 1. RADAR required. 2. During approach to RWY 07, at a dist of 1.6 NM from ARP or less, deviation to the North from RWY course is PROHIBITED.



Gnd speed-Kts	70	90	100	120	140	160	Refer to Missed Apch above
Descent Angle	3.00°	372	478	531	637	849	
MAP at PEMHI/D2.9							

**State** STRAIGHT-IN LANDING  
 MDA(H) **1440'** (426')

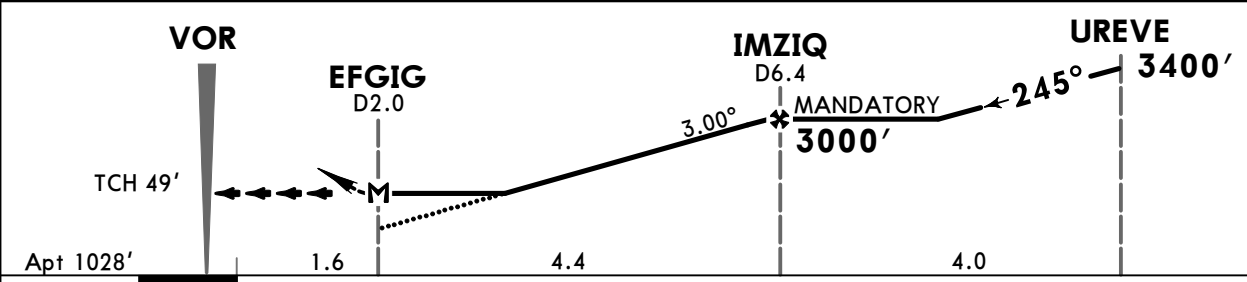
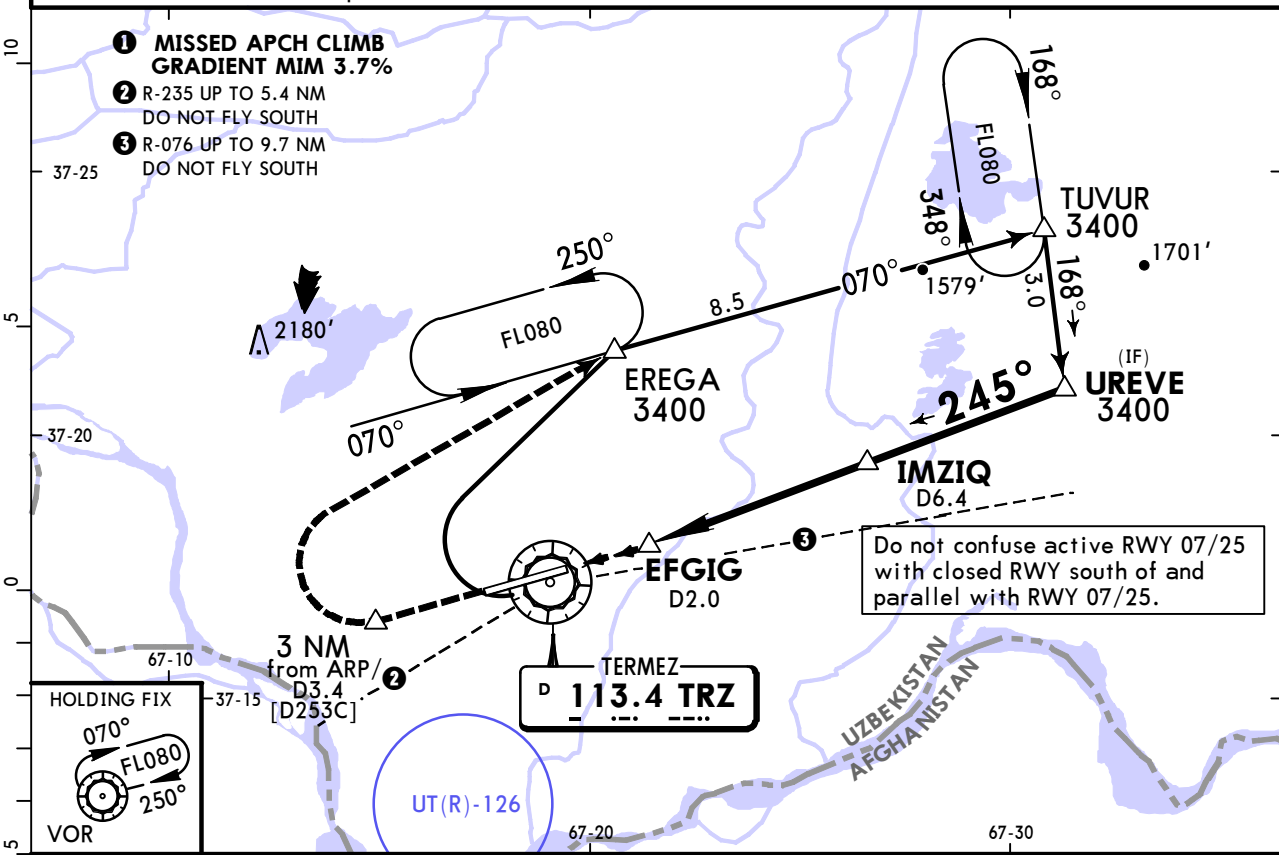
A	C/V2700m
B	
C	C/V2900m
D	

UTST/TMJ  
TERMEZ

JEPPESEN  
6 JAN 23 (13-2)

TERMEZ, UZBEKISTAN  
VOR DME Rwy 25

TERMEZ Tower					
118.6					
VOR TRZ <b>113.4</b>	Final Apch Crs <b>245°</b>	<b>IMZIQ</b> MANDATORY <b>3000'</b> (1972')	MDA(H) <b>1460'</b> (432')	Apt Elev 1028'	3500  MSA TRZ VOR
<b>MISSED APCH:</b> Climb to 1400', but not later than 3.0 NM from ARP (D3.4), then turn RIGHT (MIM BANK 20°, MAX 195 KT) to EREGA climbing to 3400', then according to chart, or as directed.					
Alt Set: hPa		Apt Elev: 37 hPa		Trans level: FL080	
				Trans alt: 6000'	



Gnd speed-Kts	70	90	100	120	140	160	HIALS PAPI	Refer to Missed Apch above
Descent Angle	3.00°	372	478	531	637	743		
MAP at EFGIG/D2.0								

**State** STRAIGHT-IN LANDING **I**  
 Missed apch climb gradient mim 3.7% up to 2500'  
 MDA(H) **1460'** (432')

ALS out	
A	C/V1800m
B	V2000m
C	C/V2200m
D	C/V2200m

**I** PAPI must be operative.





## Chart changes since cycle 04-2025

ADD = added chart, REV = revised chart, DEL = deleted chart.

ACT	PROCEDURE IDENT	INDEX	REV DATE	EFF DATE
	TERMEZ, (TERMEZ INTL - UTST)			

## TERMINAL CHART CHANGE NOTICES

No Chart Change Notices for Airport UTST