

List of pages in this Trip Kit

Trip Kit Index

Airport Information For SVBC

Terminal Charts For SVBC

Revision Letter For Cycle 22-2020

Change Notices

Notebook

General Information

Location: BARCELONA VEN
ICAO/IATA: SVBC / BLA
Lat/Long: N10° 06.7', W064° 41.5'
Elevation: 30 ft

Airport Use: Public
Daylight Savings: Not Observed
UTC Conversion: +4:00 = UTC
Magnetic Variation: 13.0° W

Fuel Types: 100-130 Octane, Jet A-1
Customs: Yes
Airport Type: IFR
Landing Fee: No
Control Tower: Yes
Jet Start Unit: No
LLWS Alert: No
Beacon: Yes

Sunrise: 1012 Z
Sunset: 2154 Z

Runway Information

Runway: 02
Length x Width: 9186 ft x 131 ft
Surface Type: asphalt
TDZ-Elev: 39 ft
Lighting: Edge
Stopway: 984 ft

Runway: 15
Length x Width: 9843 ft x 131 ft
Surface Type: asphalt
TDZ-Elev: 16 ft
Lighting: Edge, ALS

Runway: 20
Length x Width: 9186 ft x 131 ft
Surface Type: asphalt
TDZ-Elev: 18 ft
Lighting: Edge

Runway: 33
Length x Width: 9843 ft x 131 ft
Surface Type: asphalt
TDZ-Elev: 28 ft
Lighting: Edge

Communication Information

ATIS: 132.300

Barcelona Tower: 120.900

Barcelona Tower: 118.700

Barcelona Ground: 121.900

Barcelona Approach: 119.100

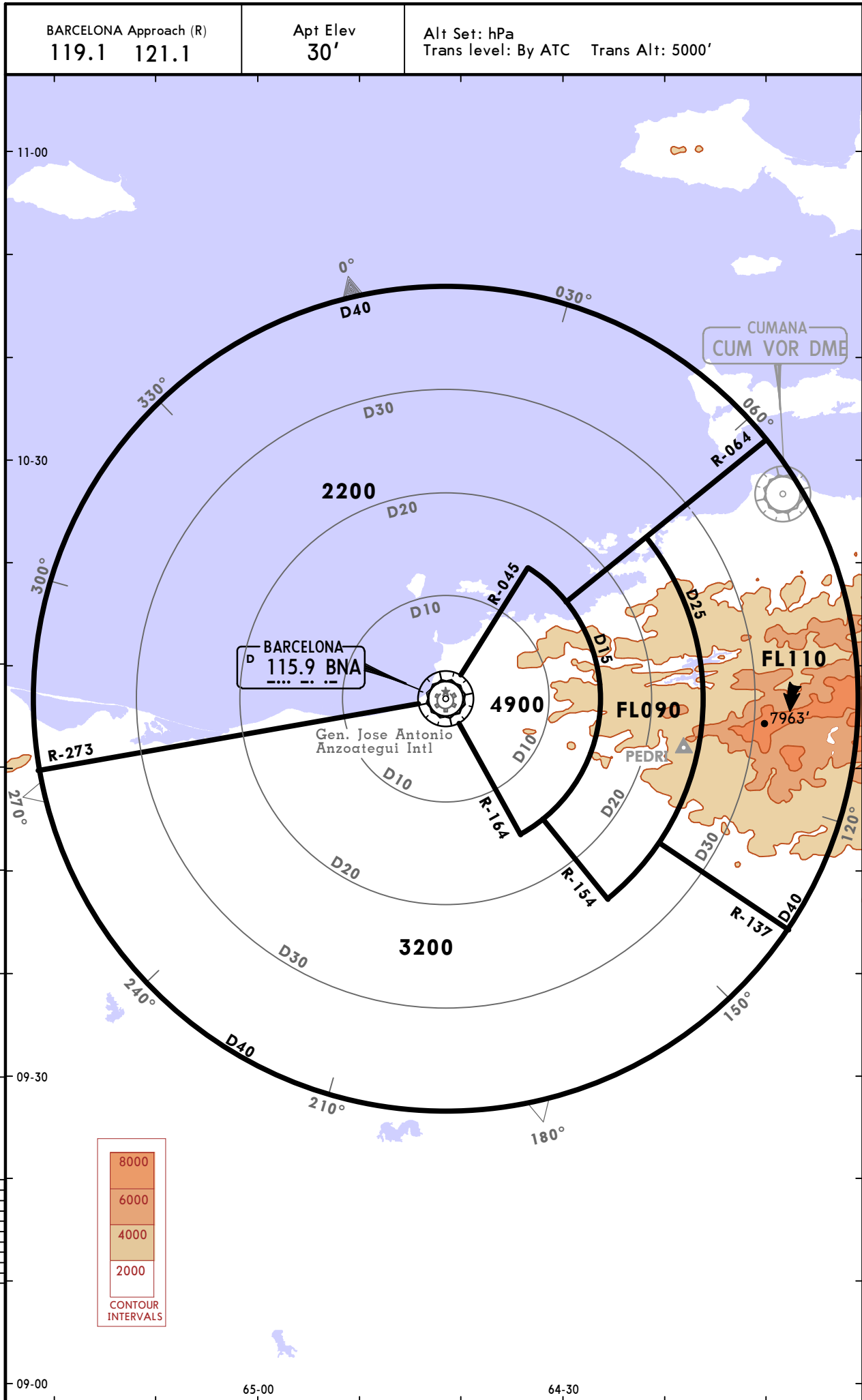
Barcelona Approach: 121.100

Barcelona Radio: 130.600 Air-Ground

SVBC/BLA
GEN JOSE ANTONIO
ANZOATEGUI INTL

JEPPESSEN
25 AUG 17 10-1R

BARCELONA, VENEZUELA
RADAR MINIMUM ALTITUDES



CHANGES: BNA VOR relocated, sectors revised.

© JEPPESEN, 2013, 2017. ALL RIGHTS RESERVED.

SVBC/BLA
GEN JOSE ANTONIO
ANZOATEGUI INTL

JEPPESEN BARCELONA, VENEZUELA

29 NOV 19

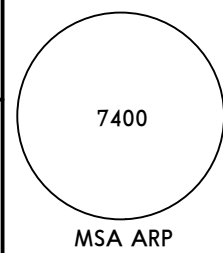
10-3

Eff 5 Dec

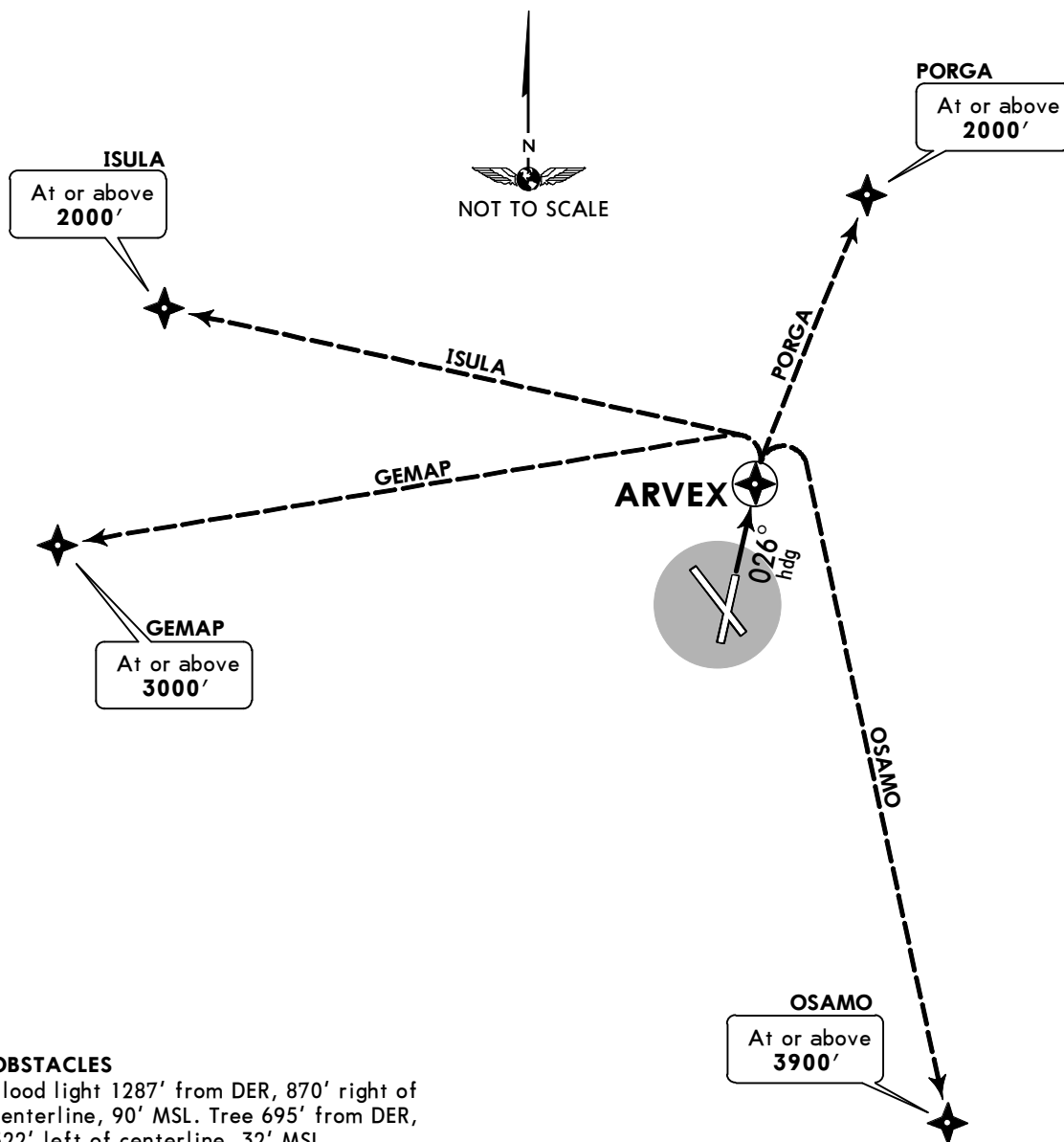
RNAV SID

Apt Elev
28'

Trans level: By ATC Trans alt: 5000'
 GPS required.



ARVEX 1 RNAV DEPARTURE
[ARVEX1]
(RWY 02)



OBSTACLES

Flood light 1287' from DER, 870' right of centerline, 90' MSL. Tree 695' from DER, 522' left of centerline, 32' MSL.

This SID requires the following minimum climb gradient:

OSAMO transition: Climb at 400' per NM to ARVEX.

Gnd speed-KT	75	100	150	200	250	300
400' per NM	500	667	1000	1333	1667	2000

INITIAL CLIMB

Climb via heading 026° to ARVEX, then via transition.

TRANSITIONS

GEMAP	From over ARVEX turn LEFT direct to cross GEMAP at or above 3000'.
ISULA	From over ARVEX turn LEFT direct to cross ISULA at or above 2000'.
OSAMO	From over ARVEX turn RIGHT direct to cross OSAMO at or above 3900'.
PORGA	From over ARVEX turn RIGHT direct to cross PORGA at or above 2000'.

SVBC/BLA
GEN JOSE ANTONIO
ANZOATEGUI INTL

JEPPESEN
 29 NOV 19

BARCELONA, VENEZUELA

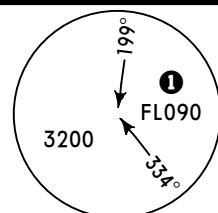
10-3A

Eff 5 Dec

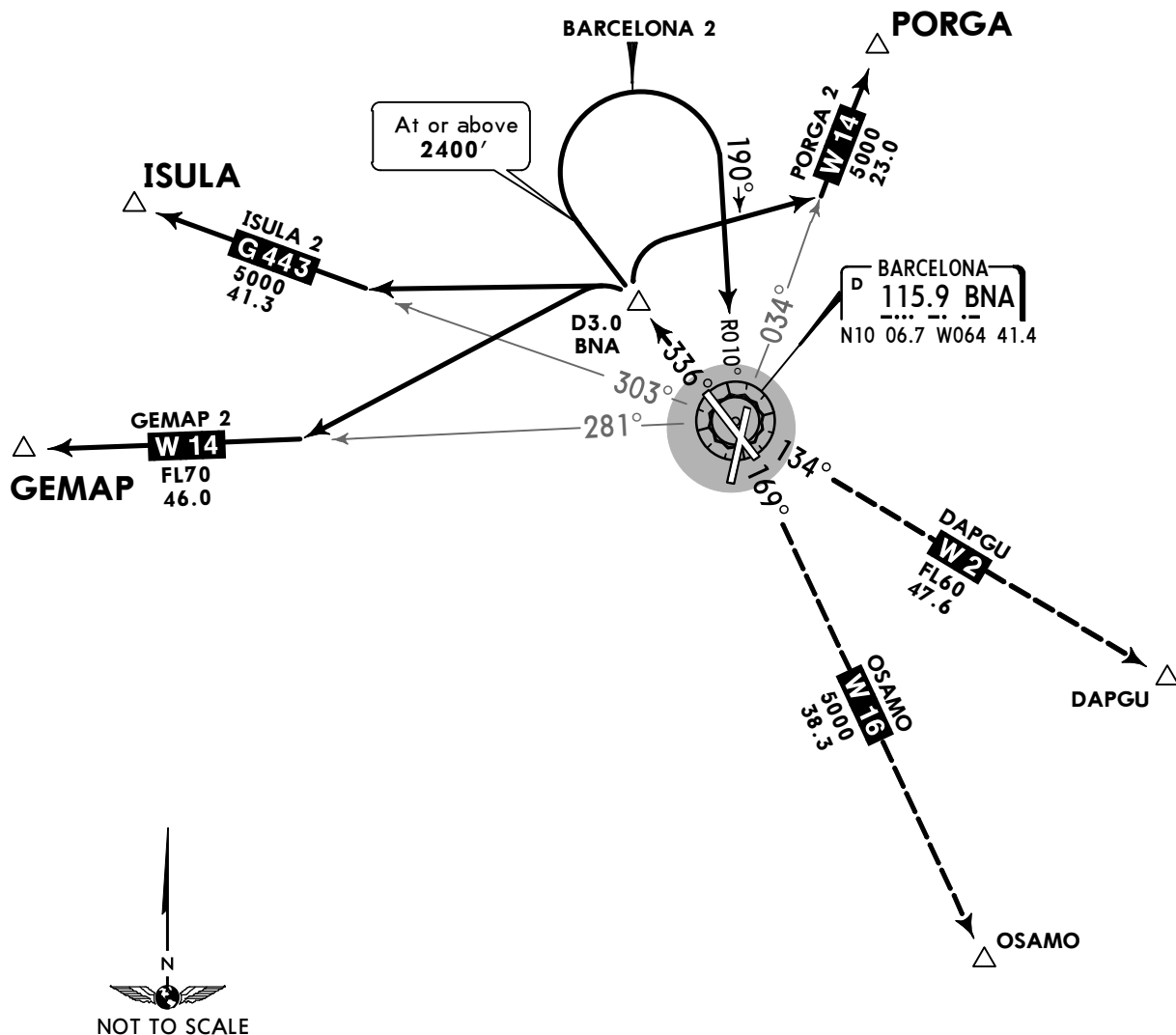
SID

Apt Elev
30'

Trans level: By ATC Trans alt: 5000'



**BARCELONA 2 [BNA2], GEMAP 2 [GEMAP2]
 ISULA 2 [ISULA2], PORGA 2 [PORGA2]
 DEPARTURES
 (RWY 33)**



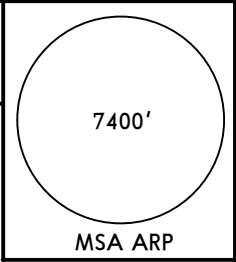
SID	INITIAL CLIMB
BARCELONA 2	MAINTAIN BNA R-336 to 2400', turn RIGHT to intercept and follow BNA R-010 to BNA VOR and continue climbing to authorized level.
TRANSITIONS	
DAPGU	At BNA VOR intercept and follow BNA R-134 and follow ATC instructions.
OSAMO	At BNA VOR intercept and follow BNA R-169 and follow ATC instructions.
SID	INITIAL CLIMB
GEMAP 2	MAINTAIN BNA R-336 to authorized level, at D3.0 BNA turn LEFT to intercept BNA R-281 and follow ATC instructions.
ISULA 2	MAINTAIN BNA R-336 to authorized level, at D3.0 BNA turn LEFT to intercept BNA R-303 and follow ATC instructions.
PORGA 2	MAINTAIN BNA R-336 to authorized level, at D3.0 BNA turn RIGHT to intercept BNA R-034 and follow ATC instructions.

SVBC/BLA
GEN JOSE ANTONIO
ANZOATEGUI INTL

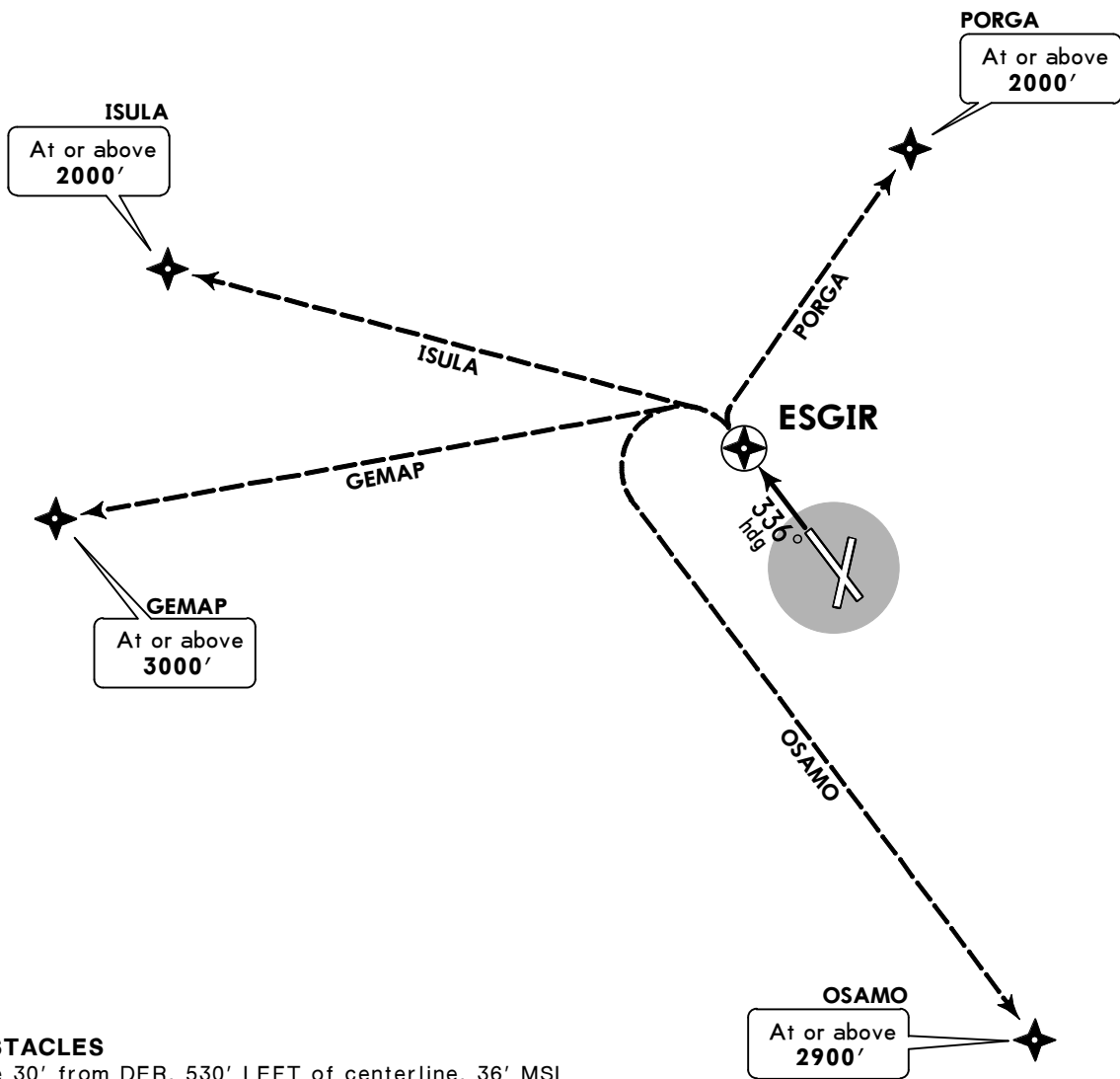
JEPPESEN
 21 APR 17 **(10-3B)**

BARCELONA, VENEZUELA
RNAV SID

Apt Elev **28'** Trans level: By ATC Trans alt: 5000'
GPS required.



ESGIR 1 DEPARTURE (RNAV)
[ESGIR1]
(RWY 33)



OBSTACLES
 Tree 30' from DER, 530' LEFT of centerline, 36' MSL.

OSAMO Transition requires a minimum climb gradient of 210' per NM to ESGIR.

Gnd speed-KT	75	100	150	200	250	300
210' per NM	263	350	525	700	875	1050



INITIAL CLIMB

Climb via heading 336° to ESGIR, then via transition.

TRANSITIONS

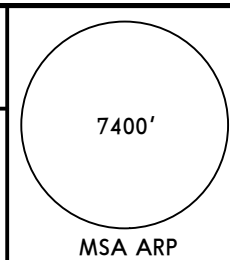
GEMAP	From over ESGIR turn LEFT direct to cross GEMAP at or above 3000'.
ISULA	From over ESGIR turn LEFT direct to cross ISULA at or above 2000'.
OSAMO	From over ESGIR turn LEFT direct to cross OSAMO at or above 2900'.
PORGA	From over ESGIR turn RIGHT direct to cross PORGA at or above 2000'.

SVBC/BLA
GEN JOSE ANTONIO
ANZOATEGUI INTL

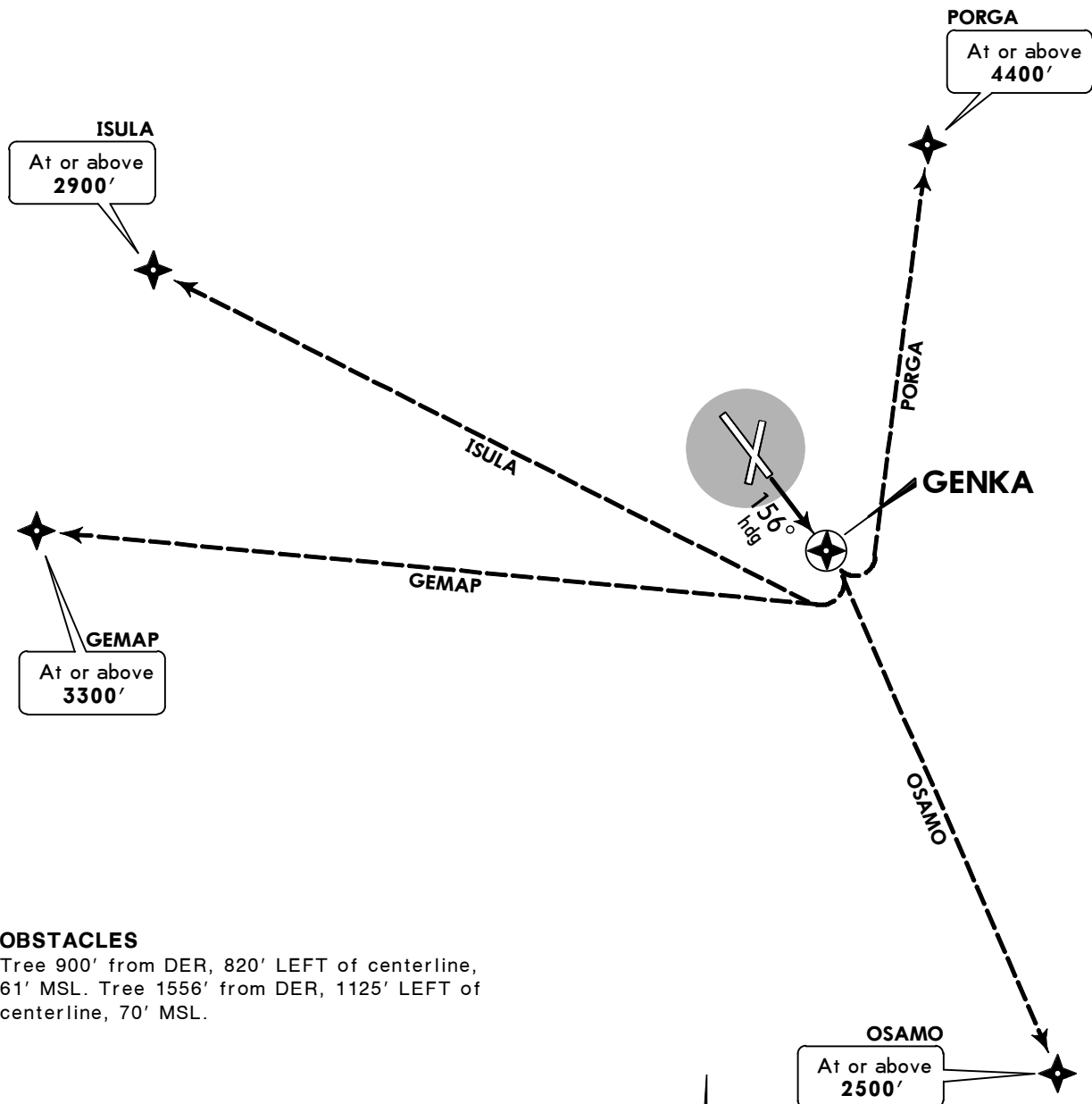
JEPPESEN **BARCELONA, VENEZUELA**
 21 APR 17 **(10-3C)** **Eff 27 Apr**

RNAV SID

Apt Elev 28'	Trans level: By ATC GPS required.	Trans alt: 5000'
------------------------	---	------------------



GENKA 1 DEPARTURE (RNAV)
[GENKA1]
(RWY 15)



OBSTACLES

Tree 900' from DER, 820' LEFT of centerline, 61' MSL. Tree 1556' from DER, 1125' LEFT of centerline, 70' MSL.

This SID requires a minimum climb gradient of 360' per NM to GENKA, then:
 OSAMO Transition: 260' per NM.
 GEMAP, ISULA, PORGA Transitions: 360' per NM.

Gnd speed-KT	75	100	150	200	250	300
260' per NM	325	433	650	867	1083	1300
360' per NM	450	600	900	1200	1500	1800



INITIAL CLIMB

Climb via heading 156° to GENKA, then via transition.

TRANSITIONS

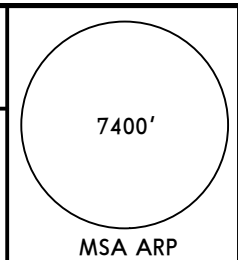
GEMAP	From over GENKA turn RIGHT direct to cross GEMAP at or above 3300'.
ISULA	From over GENKA turn RIGHT direct to cross ISULA at or above 2900'.
OSAMO	From over GENKA turn RIGHT direct to cross OSAMO at or above 2500'.
PORGA	From over GENKA turn LEFT direct to cross PORGA at or above 4400'.

SVBC/BLA
GEN JOSE ANTONIO
ANZOATEGUI INTL

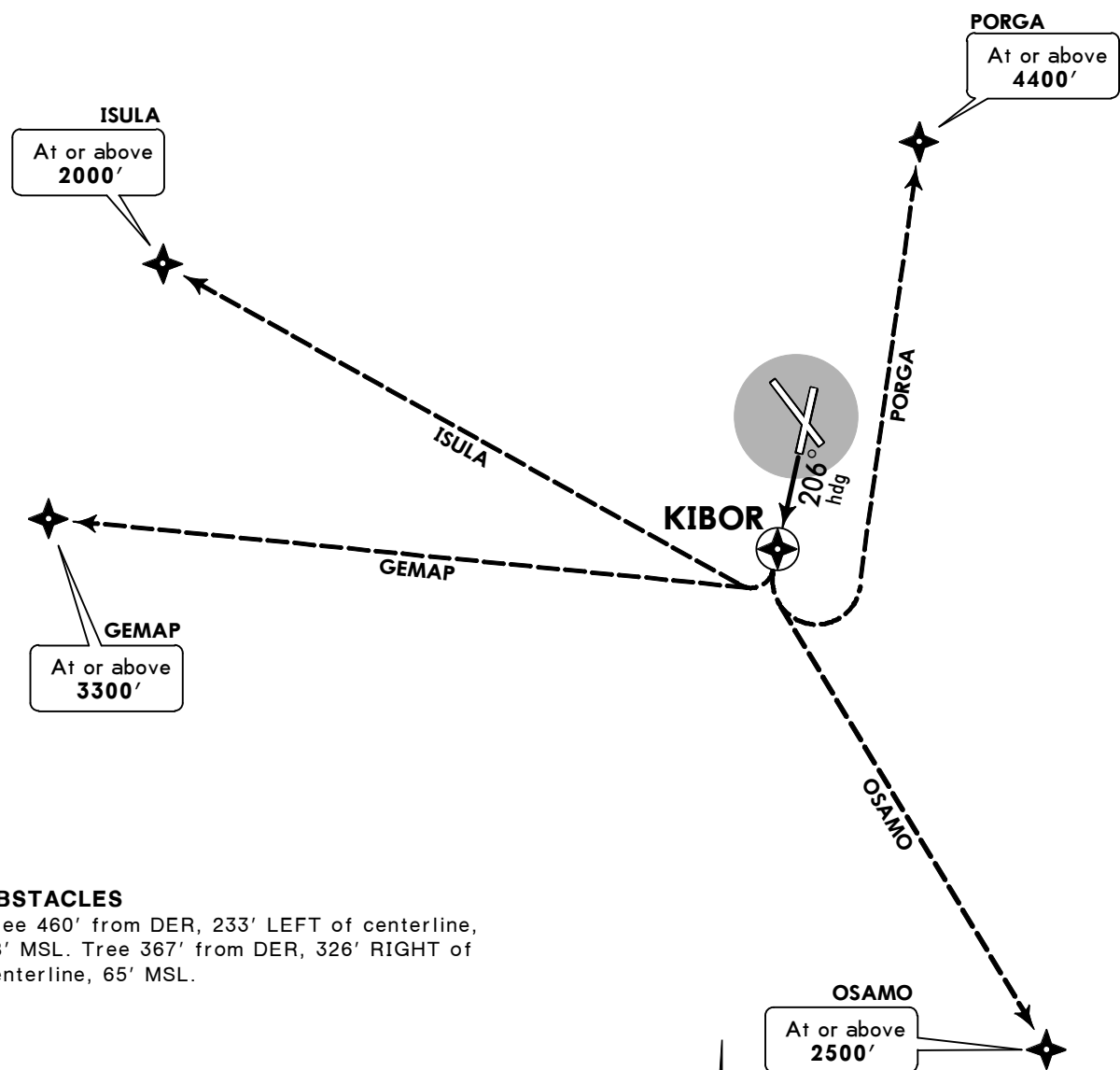
JEPPESEN **BARCELONA, VENEZUELA**
 21 APR 17 **(10-3D)** **Eff 27 Apr**

RNAV SID

Apt Elev **28'** Trans level: By ATC Trans alt: 5000'
GPS required.



KIBOR 1 DEPARTURE (RNAV)
[KIBOR1]
(RWY 20)

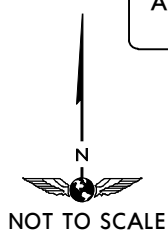


OBSTACLES

Tree 460' from DER, 233' LEFT of centerline, 68' MSL. Tree 367' from DER, 326' RIGHT of centerline, 65' MSL.

This SID requires a minimum climb gradient of 430' per NM to at or above 1780', then:
 PORGA Transition: 300' per NM.

Gnd speed-KT	75	100	150	200	250	300
300' per NM	375	500	750	1000	1250	1500
430' per NM	538	717	1075	1433	1792	2150



INITIAL CLIMB

Climb via heading 206° to KIBOR, then via transition.

TRANSITIONS

GEMAP	From over KIBOR turn RIGHT direct to cross GEMAP at or above 3300'.
ISULA	From over KIBOR turn RIGHT direct to cross ISULA at or above 2000'.
OSAMO	From over KIBOR turn LEFT direct to cross OSAMO at or above 2500'.
PORGA	From over KIBOR turn LEFT direct to cross PORGA at or above 4400'.

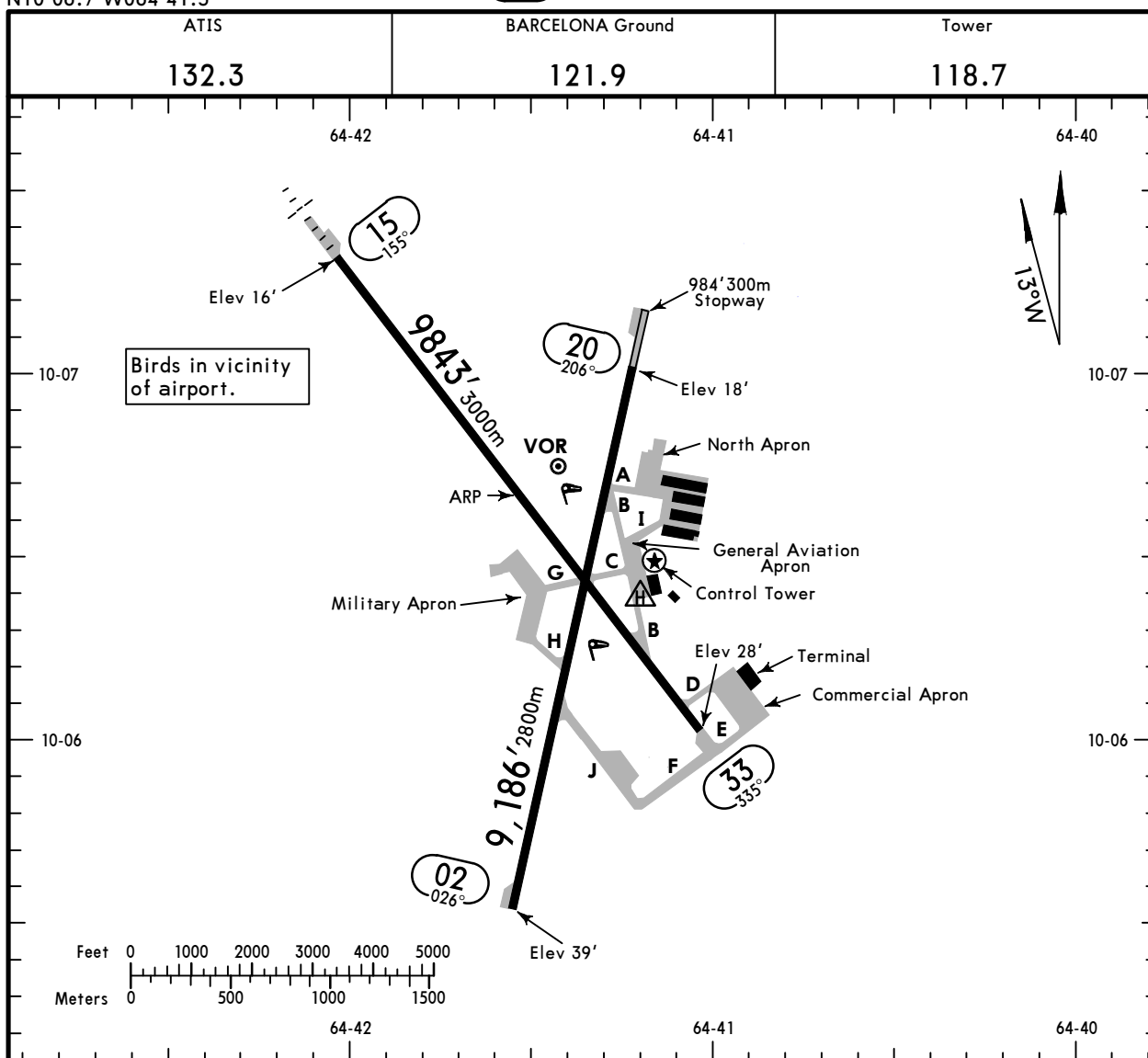
SVBC/BLA

Apt Elev **30'**
N10 06.7 W064 41.5



BARCELONA, VENEZUELA

9 FEB 18 **(10-9)** GEN JOSE ANTONIO ANZOATEGUI INTL



ADDITIONAL RUNWAY INFORMATION

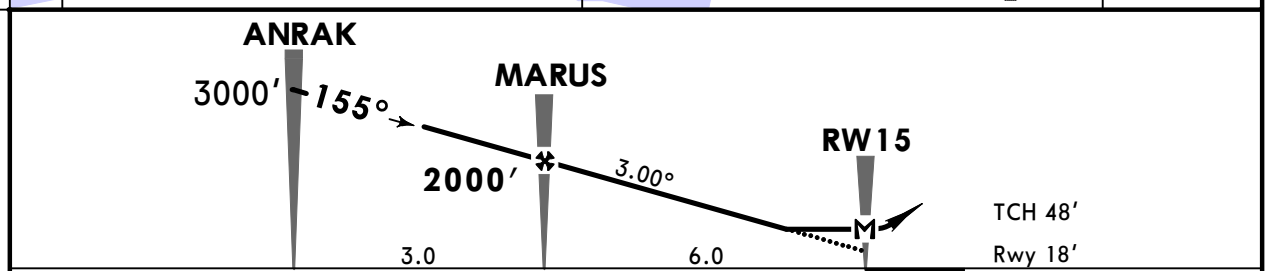
RWY		USABLE LENGTHS			WIDTH
		LANDING BEYOND Threshold	Glide Slope	TAKE-OFF	
02 ① 20	RL PAPI-L				131' 40m
	RL PAPI-L				
15 ② 33	RL ALS PAPI-L		8854' 2699m		131' 40m
	RL PAPI-L				

- ① Rwy 02/20 hours of operation are sunrise to sunset.
- ② Rwy 33 maximum take-off weight 485,017 lbs (220,000 kg), and maximum landing weight 418,878 lbs (190,000 kg). Rwy 33 VFR operations only.

	TAKE-OFF		FOR FILING AS ALTERNATE	
	All Rwys		ILS DME Rwy 15	VOR Rwy 15
	DAY	NIGHT		
1 Eng	700' -1.6 km	700' -3.2 km	A	1000' - 4.8 km
2 & 3 Eng			B	
4 Eng			C	
			D	

SVBC/BLA 29 NOV 19 **JEPPESSEN** **BARCELONA, VENEZUELA**
GEN JOSE ANTONIO ANZOATEGUI INTL (12-1) **RNP Y Rwy 15**

ATIS 132.3	BARCELONA Approach 119.1 121.1	BARCELONA Tower 118.7	Ground 121.9
RNAV	Final Apch Crs 155°	MARUS 2000' (1982')	LNAV MDA(H) 350' (332')
MISSED APCH: Climb at 415'/NM to 4000' direct EKEGO, then climbing RIGHT turn direct DIDES and hold.			7400
Alt Set: hPa Rwy Elev: 1 hPa Trans level: By ATC Trans alt: 5000'			MSA APT
1. GPS required. 2. DME/DME not authorized. 3. Procedure not authorized when using remote altimeter setting. 4. Configure for final descent prior to intermediate fix.			



Gnd speed-Kts	70	90	100	120	140	160	ALS PAPI	4000'	EKEGO
Descent Angle	3.00°	372	478	531	637	743		849	
MAP at RW15									

STRAIGHT-IN LANDING RWY 15
LNAV
 MDA(H) **350'** (332')

A		ALS out
B		
C	1.0 km	1.6 km
D		

SVBC/BLA

29 NOV 19

Eff 5 Dec

JEPPESEN

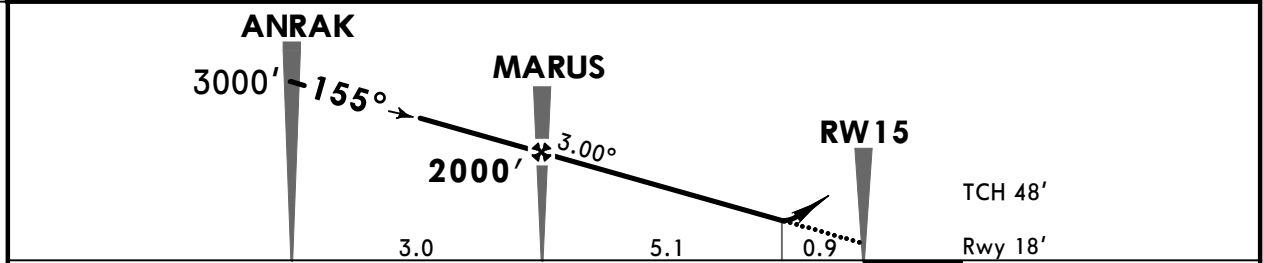
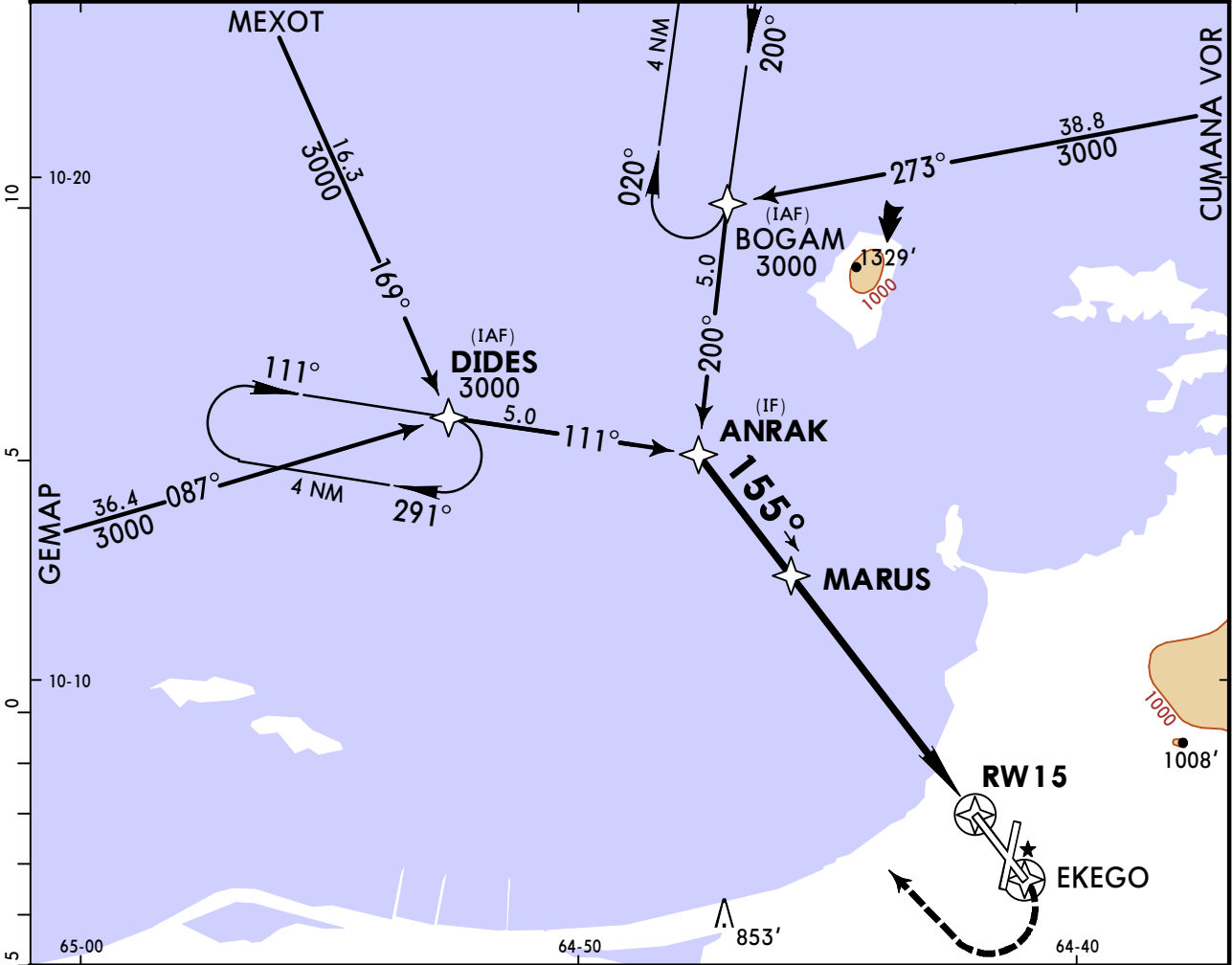
BARCELONA, VENEZUELA

GEN JOSE ANTONIO ANZOATEGUI INTL

(12-2)

RNP Z Rwy 15 (LNAV/VNAV)

ATIS 132.3		BARCELONA Approach 119.1 121.1		BARCELONA Tower 118.7	Ground 121.9
RNAV	Final Apch Crs 155°	MARUS 2000' (1982')	LNAV/VNAV DA(H) 342' (324')	Apt Elev 28' Rwy 18'	7400 MSA APT
MISSED APCH: Climb at 415'/NM to 4000' direct EKEGO, then climbing right turn direct DIDES and hold.					
Alt Set: hPa Rwy Elev: 1 hPa Trans level: By ATC Trans alt: 5000' 1. GPS required. 2. DME/DME not authorized. 3. Procedure not authorized when using remote altimeter setting. 4. Configure for final descent prior to intermediate fix.					



Gnd speed-Kts	70	90	100	120	140	160	ALS PAPI 4000' EKEGO
Descent Angle 3.00°	372	478	531	637	743	849	
MAP at DA							

STRAIGHT-IN LANDING RWY 15
LNAV/VNAV
DA(H) 342' (324')

PANS OPS	A	1.0 km	1.6 km
	B		
	C		
	D		

SVBC/BLA

29 NOV 19
Eff 5 Dec

JEPPESEN

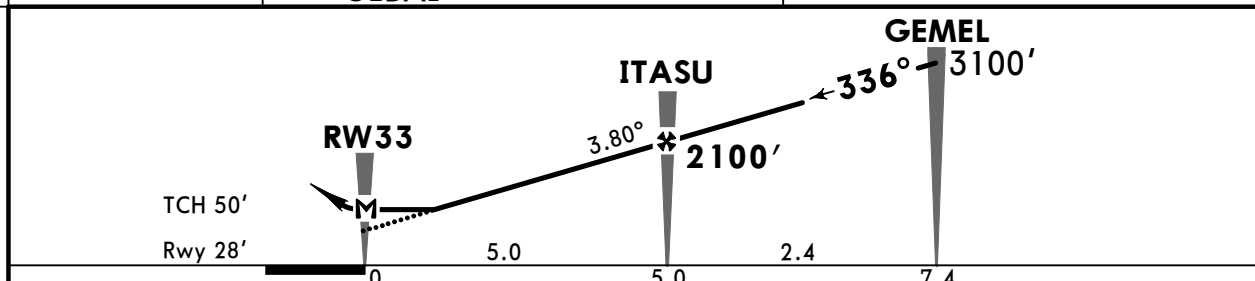
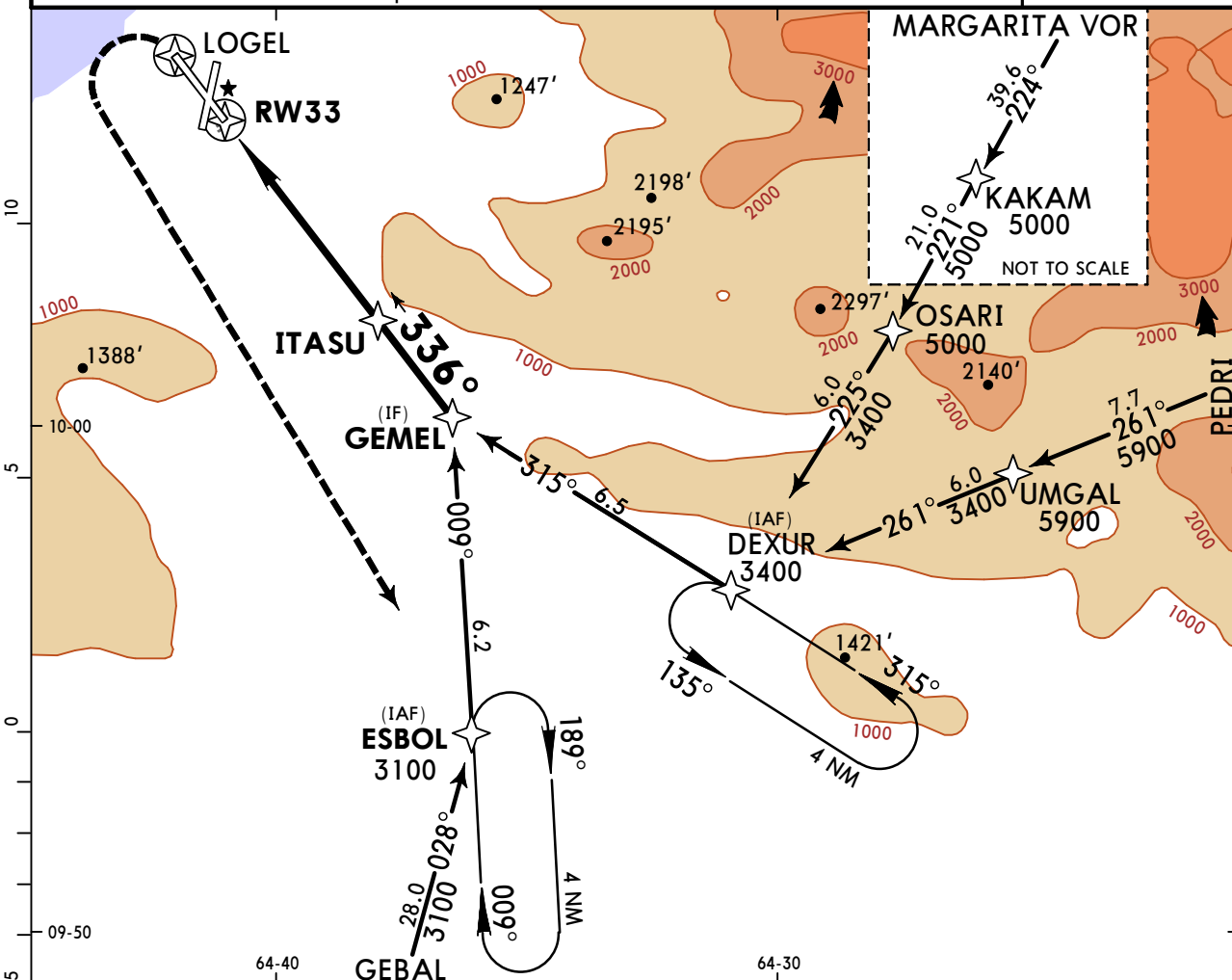
BARCELONA, VENEZUELA

GEN JOSE ANTONIO ANZOATEGUI INTL

12-3

RNP Y Rwy 33

ATIS 132.3		BARCELONA Approach 119.1 121.1		BARCELONA Tower 118.7	Ground 121.9
RNAV	Final Apch Crs 336°	ITASU 2100' (2072')	LNAV MDA(H) 380' (352')	Apt Elev 28' Rwy 28'	7400 MSA APT
MISSED APCH: Climb at 270'/NM to 4100' direct LOGEL, then climbing LEFT turn direct ESBOL and hold.					
Alt Set: hPa Rwy Elev: 1 hPa Trans level: By ATC Trans alt: 5000' 1. GPS required. 2. CAUTION: VPA 3.8 degrees. 3. DME/DME not authorized. 4. Procedure not authorized when using remote altimeter setting. 5. Configure and decelerate for final descent prior to GEMEL.					



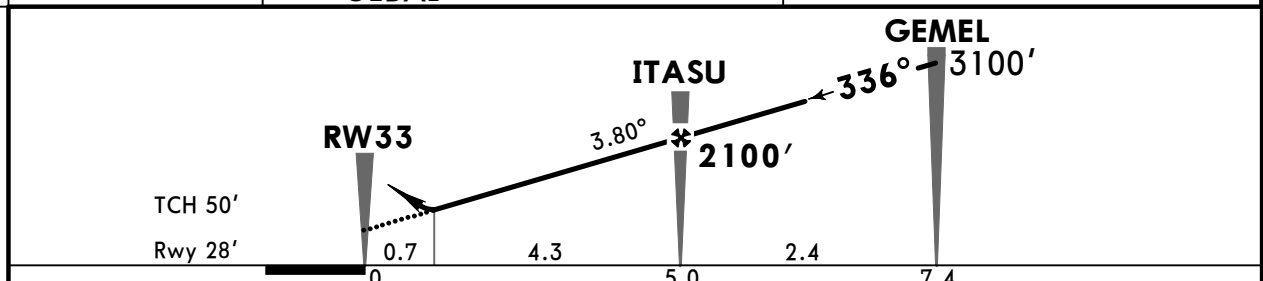
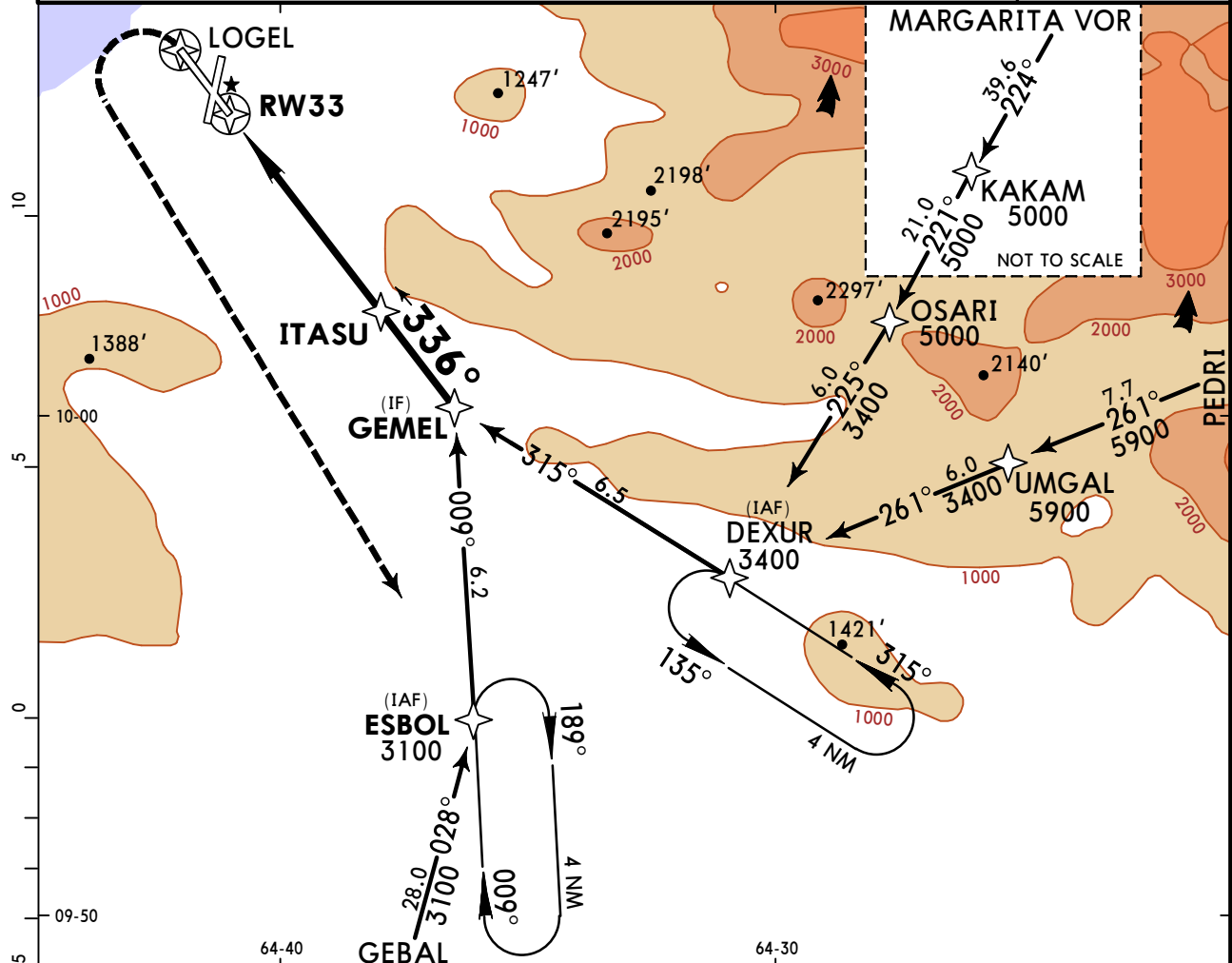
Gnd speed-Kts	70	90	100	120	140	160	4100'	D → LOGEL
Descent Angle 3.80°	471	605	673	807	942	1076		
MAP at RW33								

STRAIGHT-IN LANDING RWY 33
LNAV
MDA(H) **380'** (352')

A	1.6 km
B	
C	
D	

SVBC/BLA 29 NOV 19 **JEPPESEN** **BARCELONA, VENEZUELA**
GEN JOSE ANTONIO ANZOATEGUI INTL (12-4) **RNP Z Rwy 33 (LNAV/VNAV)**

ATIS 132.3	BARCELONA Approach 119.1 121.1		BARCELONA Tower 118.7	Ground 121.9
RNAV	Final Apch Crs 336°	ITASU 2100' (2072')	LNAV/VNAV DA(H) 372' (344')	Apt Elev 28' Rwy 28'
MISSED APCH: Climb at 270'/NM to 4100' direct LOGEL, then climbing LEFT turn direct ESBOL and hold.				<div style="border: 1px solid black; border-radius: 50%; width: 100px; height: 100px; margin: 0 auto;"></div> <p>7400</p> <p>MSA APT</p>
Alt Set: hPa Rwy Elev: 1 hPa Trans level: By ATC Trans alt: 5000' 1. GPS required. 2. CAUTION: VPA 3.8 degrees. 3. DME/DME not authorized. 4. Procedure not authorized when using remote altimeter setting. 5. Configure and decelerate for final descent prior to GEMEL.				
MISSED APCH: Climb at 270'/NM to 4100' direct LOGEL, then climbing LEFT turn direct ESBOL and hold.				



Gnd speed-Kts	70	90	100	120	140	160	4100' ↑	→ LOGEL
Descent Angle 3.80°	471	605	673	807	942	1076		
MAP at DA								

STRAIGHT-IN LANDING RWY 33
LNAV/VNAV
 DA(H) **372'** (344')

PANS OPS

A	1.6 km
B	
C	
D	

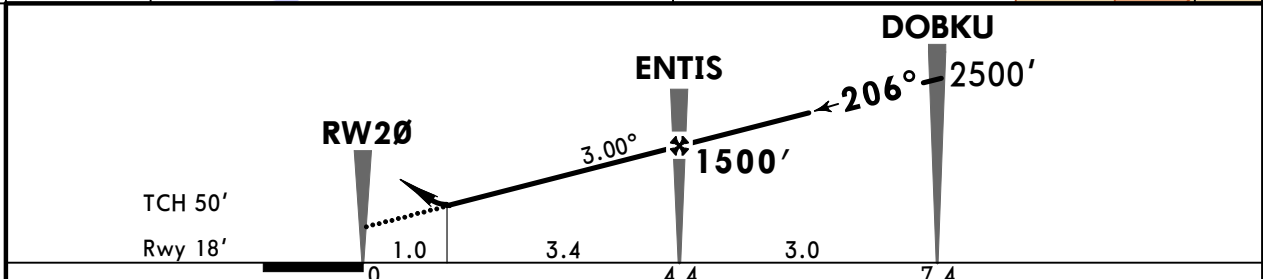
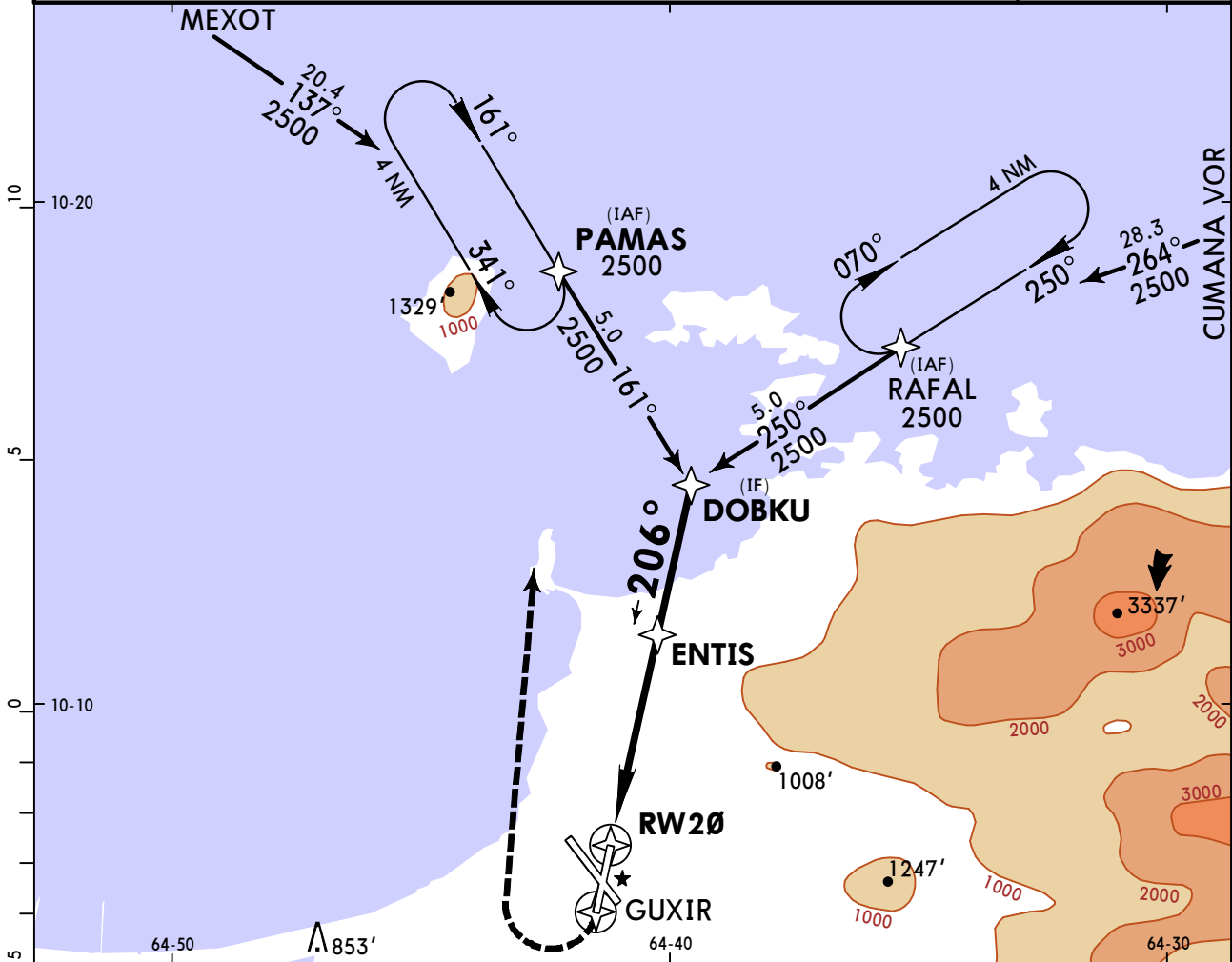
SVBC/BLA
GEN JOSE ANTONIO
ANZOATEGUI INTL

JEPPESSEN
 29 NOV 19
Eff 5 Dec (12-5)

BARCELONA, VENEZUELA
RNP Rwy 20 (LNAV/VNAV)

CAT A & B

ATIS 132.3		BARCELONA Approach 119.1 121.1		BARCELONA Tower 118.7	Ground 121.9
RNAV	Final Apch Crs 206°	ENTIS 1500' (1482')	LNAV/VNAV DA(H) 398' (380')	Apt Elev 28' Rwy 18'	7400 MSA APT
MISSED APCH: Climb at 290'/NM to 3500' direct GUXIR, then climbing RIGHT turn direct PAMAS and hold.					
Alt Set: hPa Rwy Elev: 1 hPa Trans level: By ATC Trans alt: 5000' 1. GPS required. 2. DME/DME not authorized. 3. Procedure not authorized when using remote altimeter setting. 4. Configure for final descent prior to intermediate fix.					



Gnd speed-Kts	70	90	100	120	140	160	3500'	D → GUXIR
Descent angle 3.00°	372	478	531	637	743	849		
MAP at DA							↑	

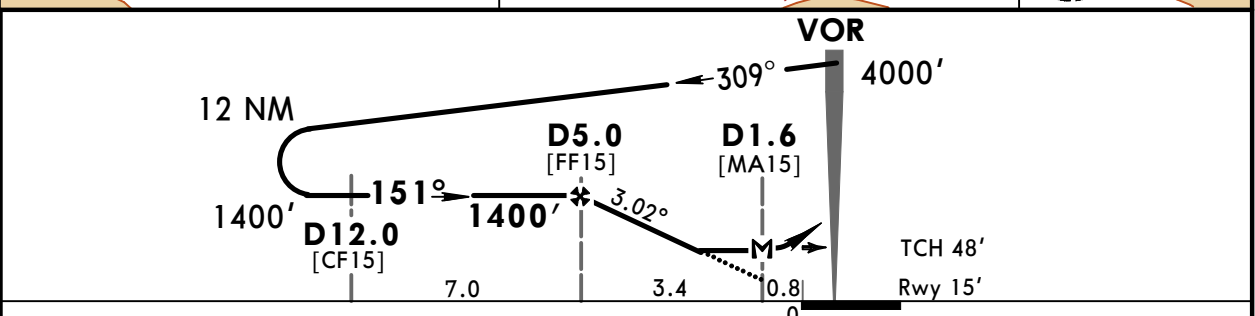
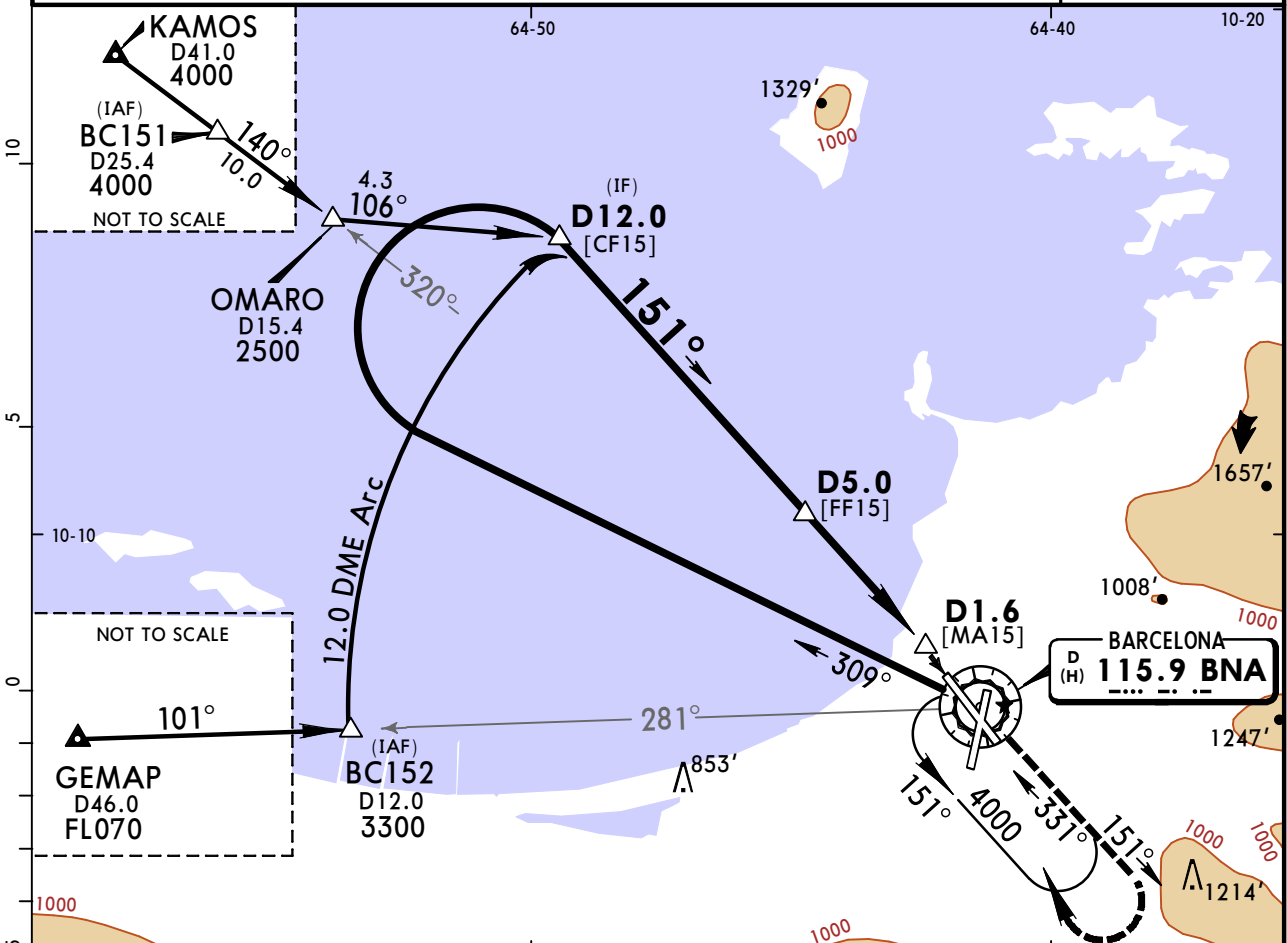
STRAIGHT-IN LANDING RWY 20
LNAV/VNAV
 DA(H) **398'** (380')

A	1.6 km
B	
C	
D	

CHANGES: Procedure title, flyover wpt deleted.

SVBC/BLA 25 AUG 17 **JEPPESEN** **BARCELONA, VENEZUELA**
GEN JOSE ANTONIO ANZOATEGUI INTL (13-1) **VOR DME Rwy 15**

ATIS 132.3		BARCELONA Approach 119.1 121.1		BARCELONA Tower 118.7	Ground 121.9
VOR BNA 115.9	Final Apch Crs 151°	Minimum Alt D5.0 1400' (1385')	MDA(H) 460' (445')	Apt Elev 30' Rwy 15'	<p>MSA BNA VOR ① 4900 within 15 NM</p>
MISSED APCH: Climb to 4000', maintain course 151°, at 1500' turn RIGHT direct to BNA VOR for hold or as cleared.					
Alt Set: hPa		Rwy Elev: 1 hPa		Trans level: By ATC	
				Trans alt: 5000'	



Gnd speed-Kts	70	90	100	120	140	160
Descent Angle 3.02°	374	481	534	641	748	855
MAP at D1.6 or D5.0 to MAP	3.4	2:55	2:16	2:02	1:42	1:27
		1:16				

ALS PAPI **4000'** on **151°**

STRAIGHT-IN LANDING RWY 15			CIRCLE-TO-LAND		
MDA(H) 460' (445')			Max Kts		
ALS out			MDA(H)		
A	1.6 km		100	540' (510') - 1.9 km	
B	2.0 km		135	970' (940') - 2.8 km	
C	2.4 km		C	NA	
D			D		

Chart changes since cycle 21-2020

ADD = added chart, REV = revised chart, DEL = deleted chart.

ACT	PROCEDURE IDENT	INDEX	REV DATE	EFF DATE
-----	-----------------	-------	----------	----------

BARCELONA, (GEN. JOSE ANTONIO ANZOATEGUI I - SVBC)

TERMINAL CHART CHANGE NOTICES

No Chart Change Notices for Airport SVBC