

List of pages in this Trip Kit

Trip Kit Index

Airport Information For SVBI

Terminal Charts For SVBI

Revision Letter For Cycle 22-2020

Change Notices

Notebook

General Information

Location: BARINAS VEN
ICAO/IATA: SVBI / BNS
Lat/Long: N08° 36.9', W070° 12.8'
Elevation: 615 ft

Airport Use: Public
Daylight Savings: Not Observed
UTC Conversion: +4:00 = UTC
Magnetic Variation: 10.0° W

Fuel Types: 100-130 Octane, Jet A-1
Customs: No
Airport Type: IFR
Landing Fee: No
Control Tower: Yes
Jet Start Unit: No
LLWS Alert: No
Beacon: Yes

Sunrise: 1033 Z
Sunset: 2218 Z

Runway Information

Runway: 04
Length x Width: 3937 ft x 131 ft
Surface Type: asphalt
TDZ-Elev: 610 ft

Runway: 13
Length x Width: 6562 ft x 131 ft
Surface Type: asphalt
TDZ-Elev: 615 ft
Lighting: Edge
Displaced Threshold: 984 ft

Runway: 22
Length x Width: 3937 ft x 131 ft
Surface Type: asphalt
TDZ-Elev: 617 ft

Runway: 31
Length x Width: 6562 ft x 131 ft
Surface Type: asphalt
TDZ-Elev: 594 ft
Lighting: Edge, ALS

Communication Information

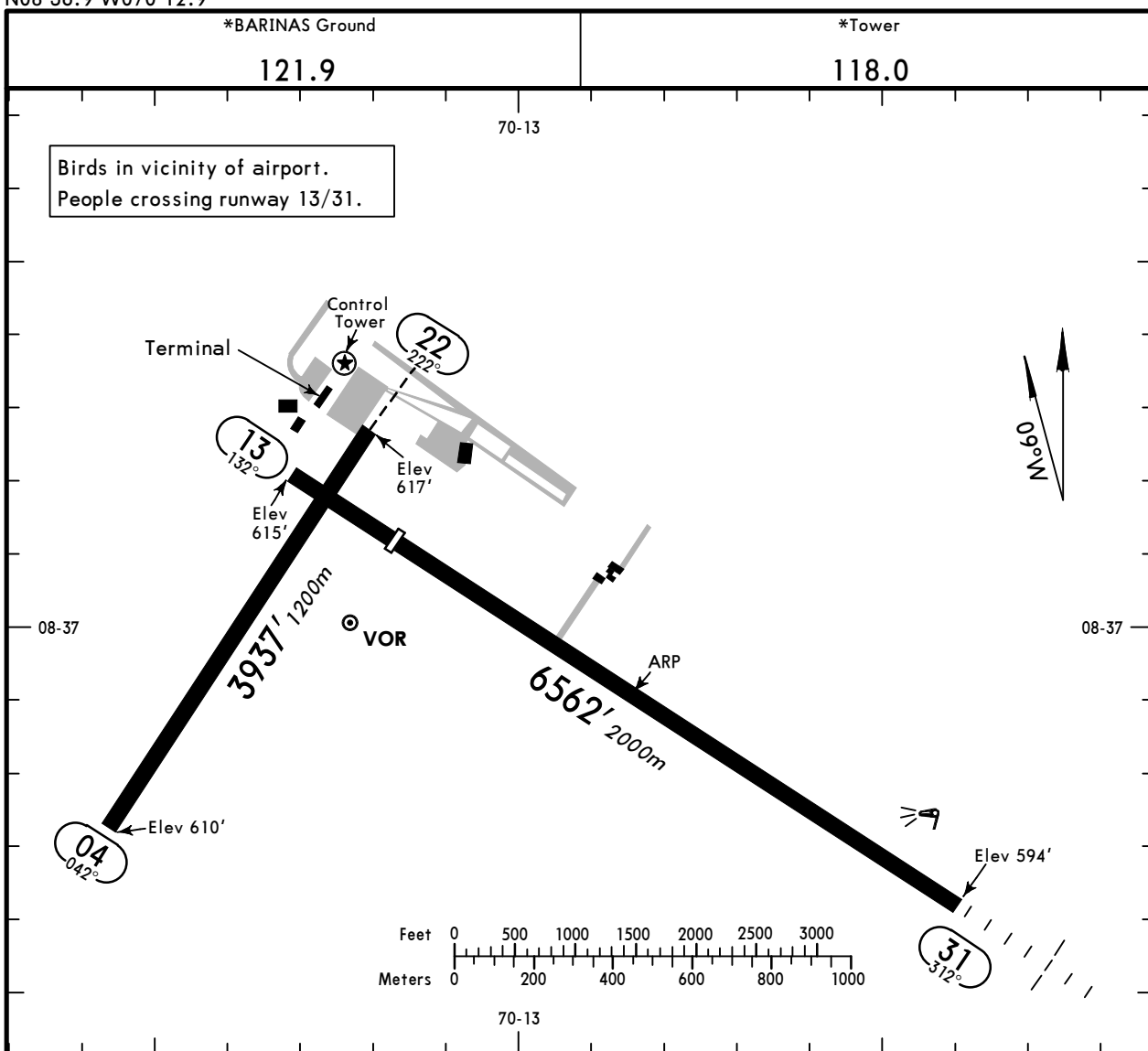
Barinas Tower: 118.000 Air-Ground

Barinas Ground: 121.900

SVBI/BNS
 Apt Elev **615'**
 N08 36.9 W070 12.9

JEPPESSEN
 13 MAR 15 **(10-9)**

BARINAS, VENEZUELA
BARINAS



ADDITIONAL RUNWAY INFORMATION

RWY		USABLE LENGTHS			WIDTH
		Threshold	Glide Slope	TAKE-OFF	
04	22				131' 40m
13	31	5577' 1700m			131' 40m

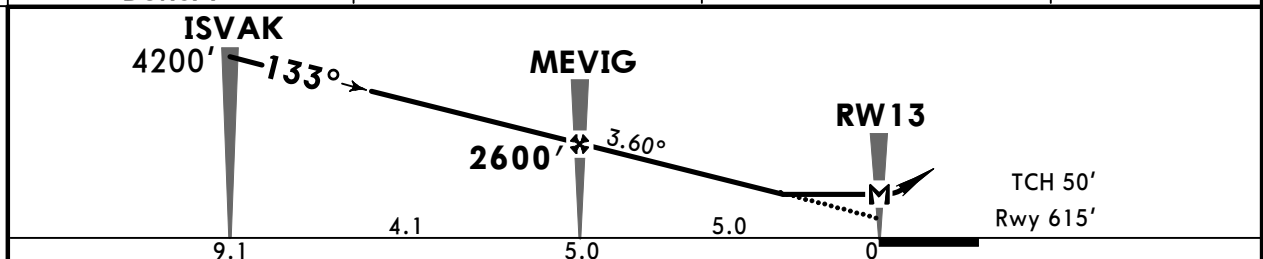
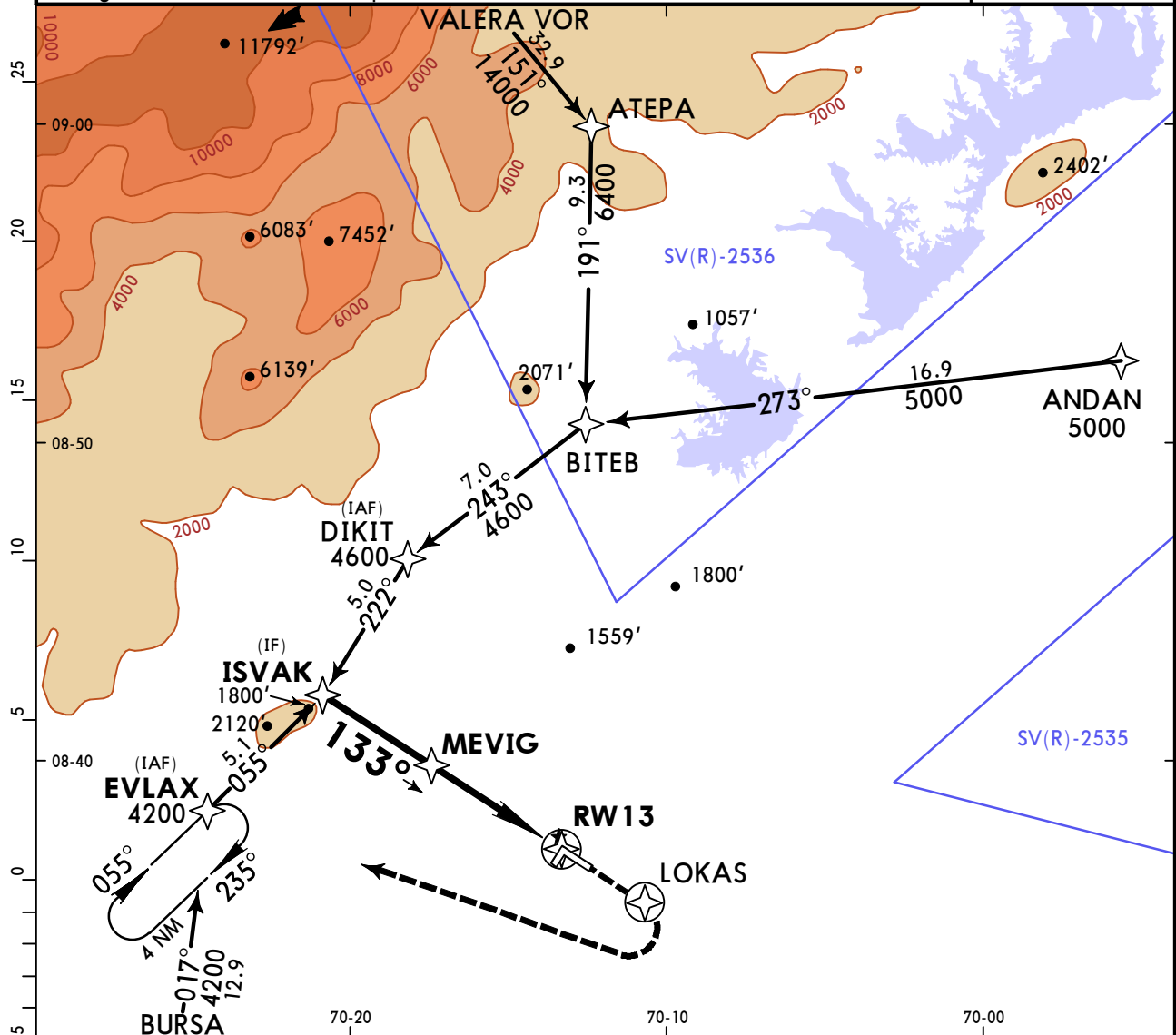
	TAKE-OFF
	All Rwys
1 & 2 Eng	1.6 km
3 & 4 Eng	1.2 km

SVBI/BNS BARINAS

JEPPESSEN
29 NOV 19 **12-1** Eff 5 Dec

BARINAS, VENEZUELA RNP Rwy 13

*BARINAS Tower 118.0				*Ground 121.9	
RNAV	Final Apch Crs 133°	MEVIG 2600' (1985')	LNAV MDA(H) 1030' (415')	Apt Elev 615'	13,800
Rwy 615'					
MISSED APCH: Climb direct LOKAS, then climbing RIGHT turn direct EVLAX at 5200' and hold.					
Alt Set: hPa		Rwy Elev: 22 hPa	Trans level: By ATC		Trans alt: 4000'
1. GPS required. 2. DME/DME not authorized. 3. Procedure not authorized when using remote altimeter setting. 4. Configure for final descent prior to intermediate fix. 5. High terrain northwest of airport.					
					MSA SVBI



Gnd speed-Kts	70	90	100	120	140	160	5200'	D →	LOKAS
Descent Angle	3.60°	446	573	637	765	892			
MAP at RW13									

STRAIGHT-IN LANDING RWY 13				CIRCLE-TO-LAND			
LNAV							
MDA(H) 1030' (415')							

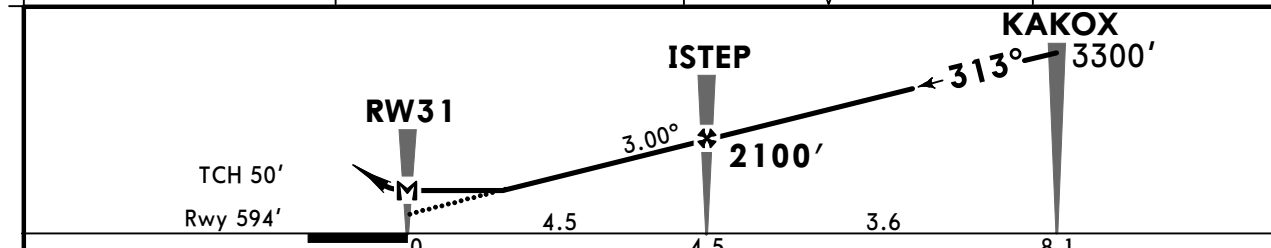
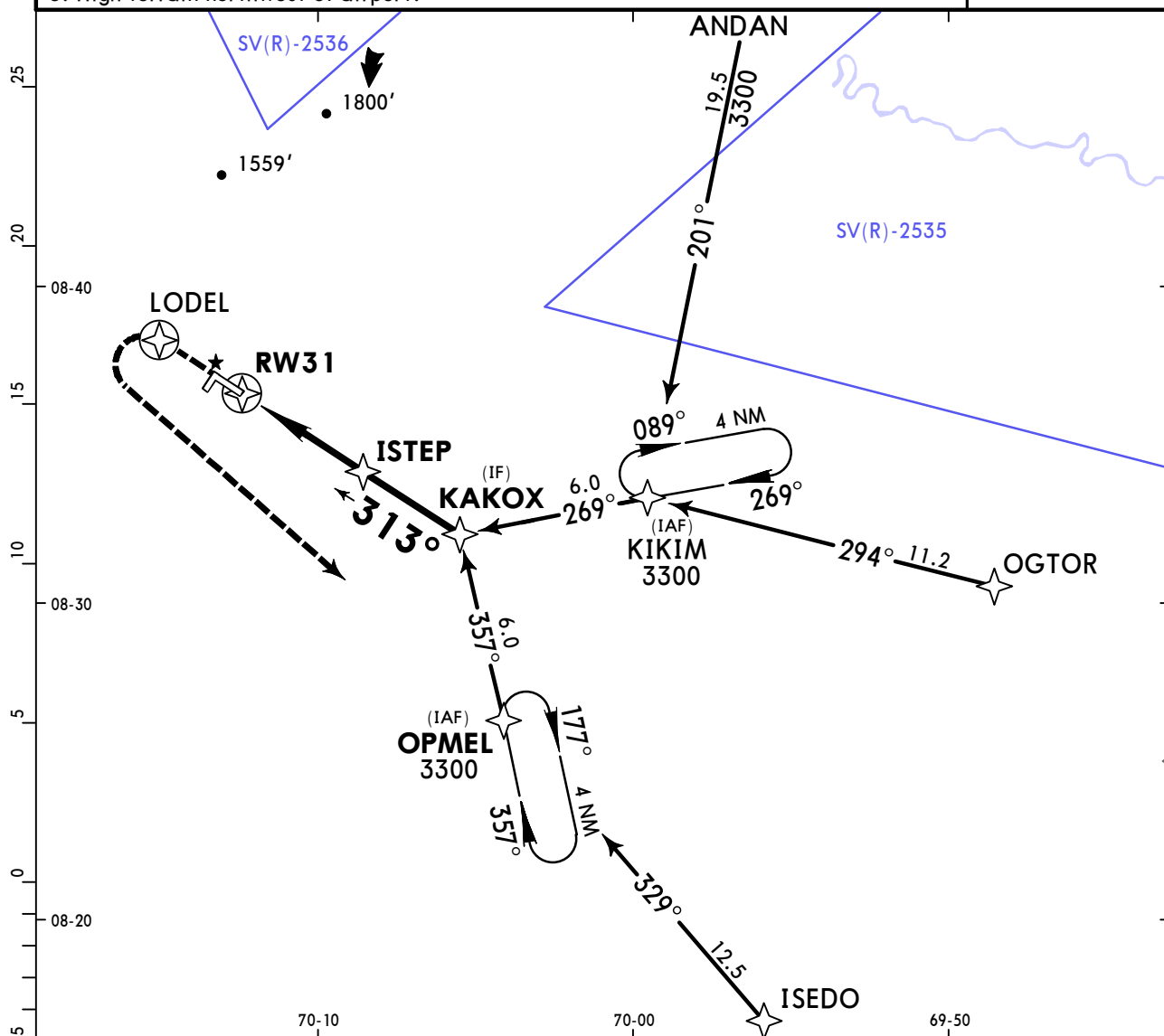
PANS OPS	A	1.8 km	A	NA
	B		B	
	C		C	
	D		D	

SVBI/BNS BARINAS

JEPPESSEN
29 NOV 19 **(12-2)** Eff 5 Dec

BARINAS, VENEZUELA RNP Rwy 31

*BARINAS Tower 118.0				*Ground 121.9	
RNAV	Final Apch Crs 313°	ISTEP 2100' (1506')	LNAV MDA(H) 940' (346')	Apt Elev 615' Rwy 594'	<div style="border: 1px solid black; border-radius: 50%; width: 100px; height: 100px; margin: 0 auto;"></div> <p>13,800</p> <p>MSA SVBI</p>
MISSED APCH: Climb at 210'/NM direct LODEL, then climbing LEFT turn direct OPMEL at 4300' and hold.					
Alt Set: hPa Rwy Elev: 22 hPa Trans level: By ATC Trans alt: 4000'					
1. GPS required. 2. DME/DME not authorized. 3. Procedure not authorized when using remote altimeter setting. 4. Configure for final descent prior to intermediate fix. 5. High terrain northwest of airport.					



Gnd speed-Kts	70	90	100	120	140	160	ALS PAPI	4300'	D →	LODEL
Descent Angle	3.00°	372	478	531	637	743				
MAP at RW31										
STRAIGHT-IN LANDING RWY 31						CIRCLE-TO-LAND				
LNAV MDA(H) 940' (346')						ALS out				

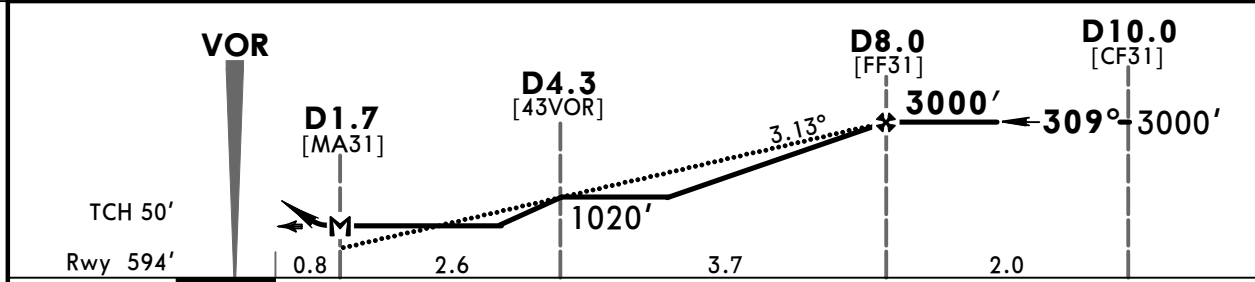
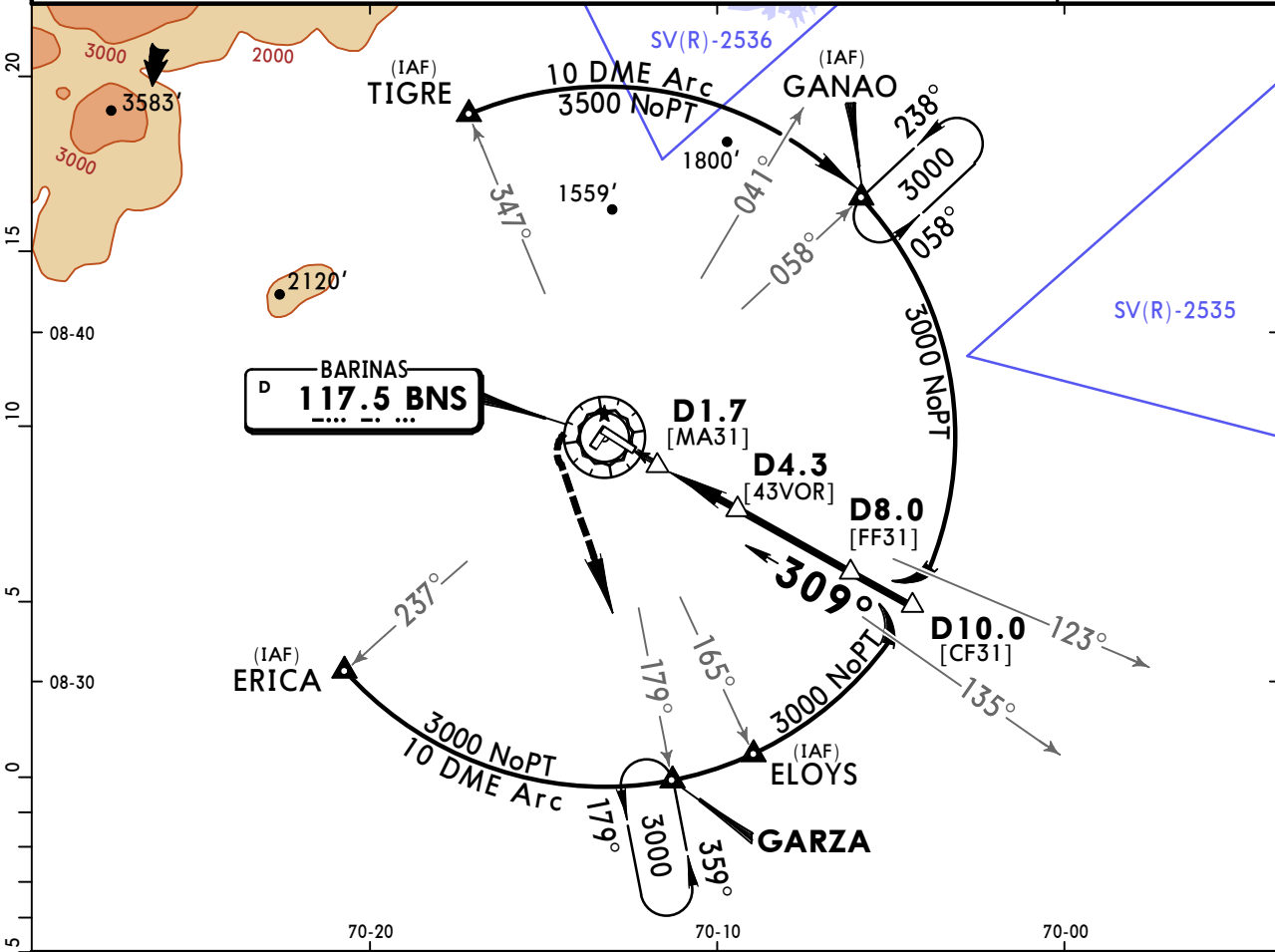
PANS OPS	A	1.6 km	A	NA
	B		B	
	C		C	
	D		D	

SVBI/BNS BARINAS

JEPPESEN
21 APR 17 **(13-1)** **Eff 27 Apr**

BARINAS, VENEZUELA VOR DME Rwy 31

*BARINAS Tower				*Ground	
118.0				121.9	
VOR BNS 117.5	Final Apch Crs 309°	Minimum Alt D8.0 3000'(2406')	MDA(H) 970' (376')	Apt Elev 615'	Rwy 594'
MISSED APCH: Maintain inbound BNS VOR R-129 climbing to 3000' cross BNS VOR LEFT turn direct to GARZA for holding or as directed by ATC.					
Alt Set: hPa Rwy Elev: 22 hPa Trans level: By ATC Trans alt: 4000' 1. City overflight not authorized.					



Gnd speed-Kts	70	90	100	120	140	160	ALS PAPI BNS 117.5 R-129 3000' BNS 117.5
Descent Angle	3.13°	388	498	554	665	886	
MAP at D1.7 or D8.0 to MAP	6.3	5:24	4:12	3:47	3:09	2:42	

STRAIGHT-IN LANDING RWY 31			CIRCLE-TO-LAND		
MDA(H) 970' (376')			Not Authorized to Rwy 22		
ALS out			Max Kts		
A	1.6 km		100	1100'(485') - 1.6 km	
B	2.0 km		135	1610'(995') - 2.4 km	
C			180	1610'(995') - 3.6 km	
D			205		

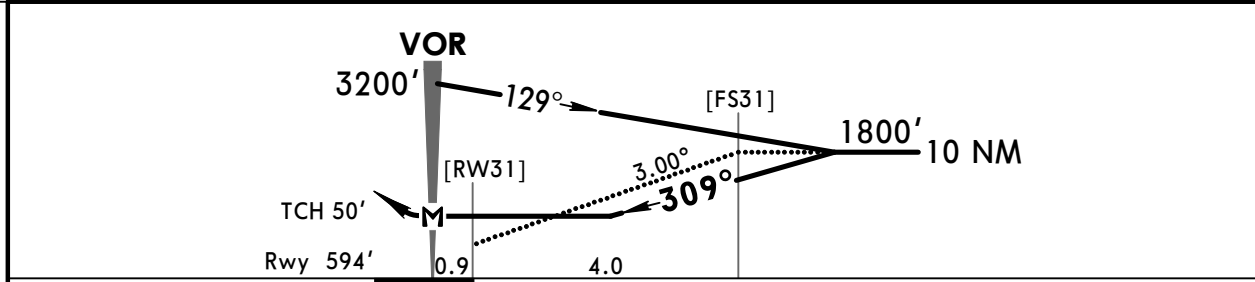
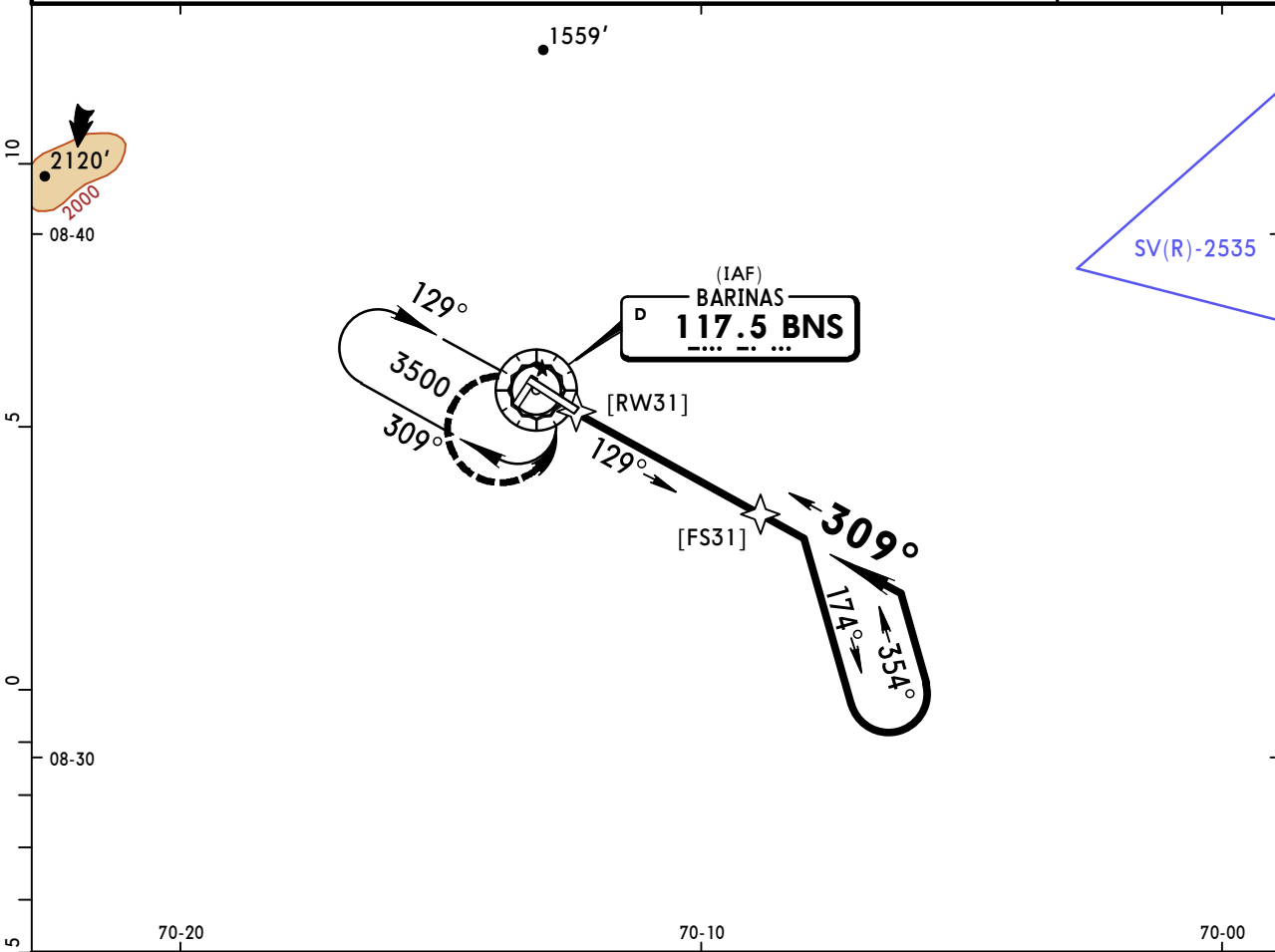
PANS OPS

**SVBI/BNS
BARINAS**

JEPPESEN
21 APR 17 **13-2** **Eff 27 Apr**

**BARINAS, VENEZUELA
VOR Rwy 31**

*BARINAS Tower				*Ground		
118.0				121.9		
VOR BNS 117.5	Final Apch Crs 309°	No FAF	MDA(H) 1020' (426')	Apt Elev 615'	Rwy 594'	
MISSED APCH: Turn LEFT climbing to 3500' to BNS VOR and hold.						
Alt Set: hPa	Rwy Elev: 22 hPa	Trans level: By ATC	Trans alt: 4000'		MSA BNS VOR	



Gnd speed-Kts	70	90	100	120	140	160	ALS PAPI LT	3500' BNS 117.5
Descent Angle 3.00°	372	478	531	637	743	849		
MAP at VOR								

STRAIGHT-IN LANDING RWY 31		CIRCLE-TO-LAND	
MDA(H) 1020' (426')		MDA(H)	
ALS out		Max Kts	
A	1.6 km	100	1100' (485') - 1.6 km
B		135	1140' (525') - 1.6 km
C	2.0 km	180	1210' (595') - 2.4 km
D		205	1310' (695') - 3.6 km

PANS OPS

Chart changes since cycle 21-2020

ADD = added chart, REV = revised chart, DEL = deleted chart.

ACT	PROCEDURE IDENT	INDEX	REV DATE	EFF DATE
-----	-----------------	-------	----------	----------

BARINAS, (BARINAS LUISA CACERES DE ARISM - SVBI)

TERMINAL CHART CHANGE NOTICES

No Chart Change Notices for Airport SVBI