

List of pages in this Trip Kit

Trip Kit Index

Airport Information For SVVA

Terminal Charts For SVVA

Revision Letter For Cycle 22-2020

Change Notices

Notebook

General Information

Location: VALENCIA VEN
ICAO/IATA: SVVA / VLN
Lat/Long: N10° 09.0', W067° 55.4'
Elevation: 1417 ft

Airport Use: Public
Daylight Savings: Not Observed
UTC Conversion: +4:00 = UTC
Magnetic Variation: 12.0° W

Fuel Types: 100-130 Octane, Jet A-1
Customs: Yes
Airport Type: IFR
Landing Fee: No
Control Tower: Yes
Jet Start Unit: No
LLWS Alert: No
Beacon: Yes

Sunrise: 1025 Z
Sunset: 2206 Z

Runway Information

Runway: 10
Length x Width: 9843 ft x 164 ft
Surface Type: asphalt
TDZ-Elev: 1417 ft
Lighting: Edge, ALS

Runway: 28
Length x Width: 9843 ft x 164 ft
Surface Type: asphalt
TDZ-Elev: 1398 ft
Lighting: Edge

Communication Information

Valencia Tower: 118.900
Valencia Ground: 121.900
Libertador Approach: 120.800
Maiquetia Radio: 132.000 Air-Ground

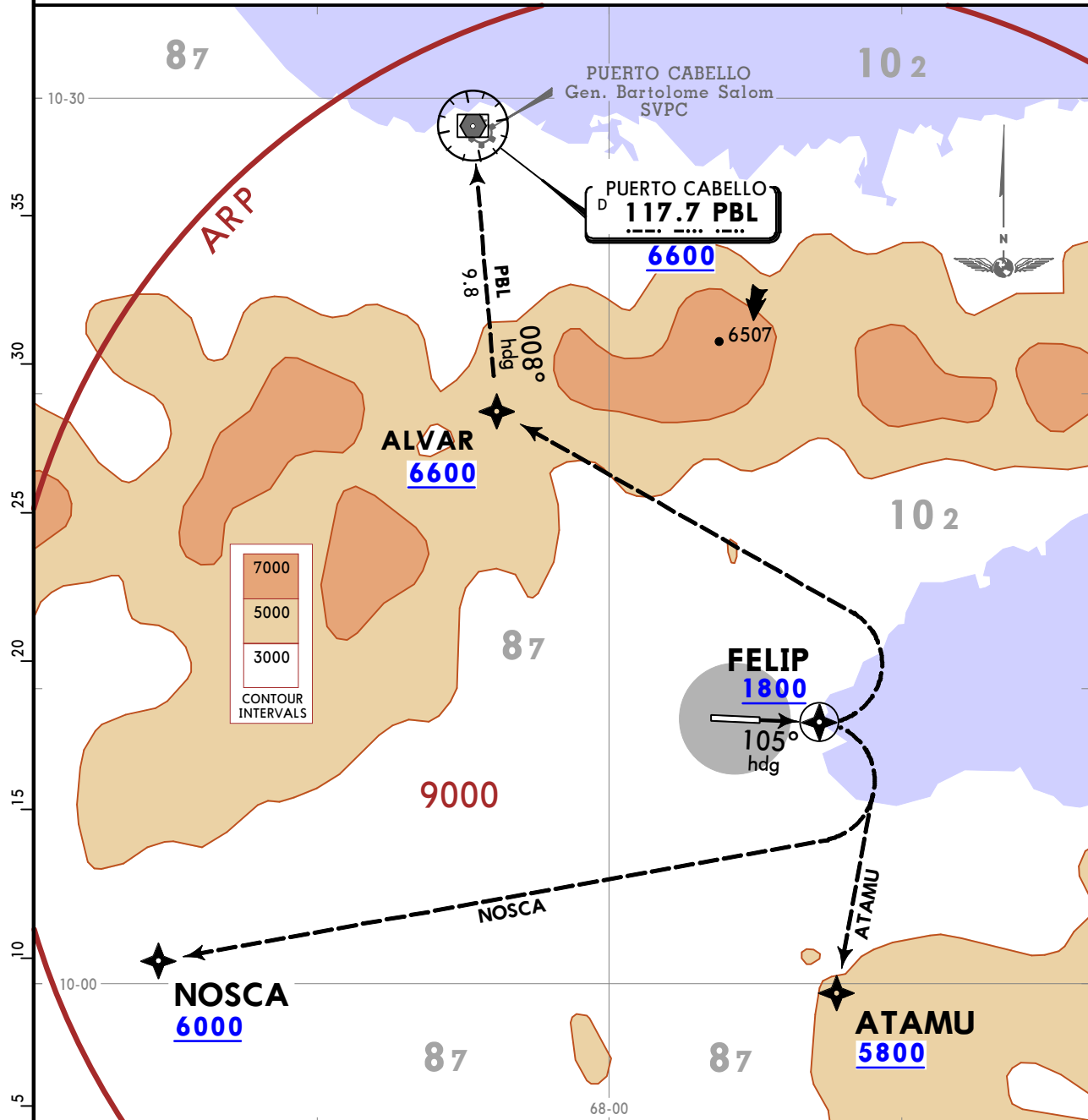
SVVA/VLN
ARTURO MICHELENA INTL

JEPPESEN
1 JUN 18 (10-3)

VALENCIA, VENEZUELA
RNAV SID

Apt Elev 1417
Trans alt: 10000
1. GPS required.
2. DME-DME not authorized

FELIP 1 DEPARTURE (RNAV)
[FELIP1]
(RWY 10)



This SID requires the following minimum climb gradients:
ATAMU transition: 285 per NM.
PBL transition: 320 per NM.

Gnd speed-KT	75	100	150	200	250	300
285 per NM	356	475	713	950	1188	1425
320 per NM	400	533	800	1067	1333	1600

INITIAL CLIMB

Climb on heading 105° to FELIP.

TRANSITIONS

ATAMU	At FELIP climbing RIGHT turn direct ATAMU at or above 5800.
NOSCA	At FELIP climbing RIGHT turn direct NOSCA at or above 6000.
PBL	At FELIP climbing LEFT turn direct ALVAR at or above 6600, then heading 008° to PBL VOR at or above 6600.

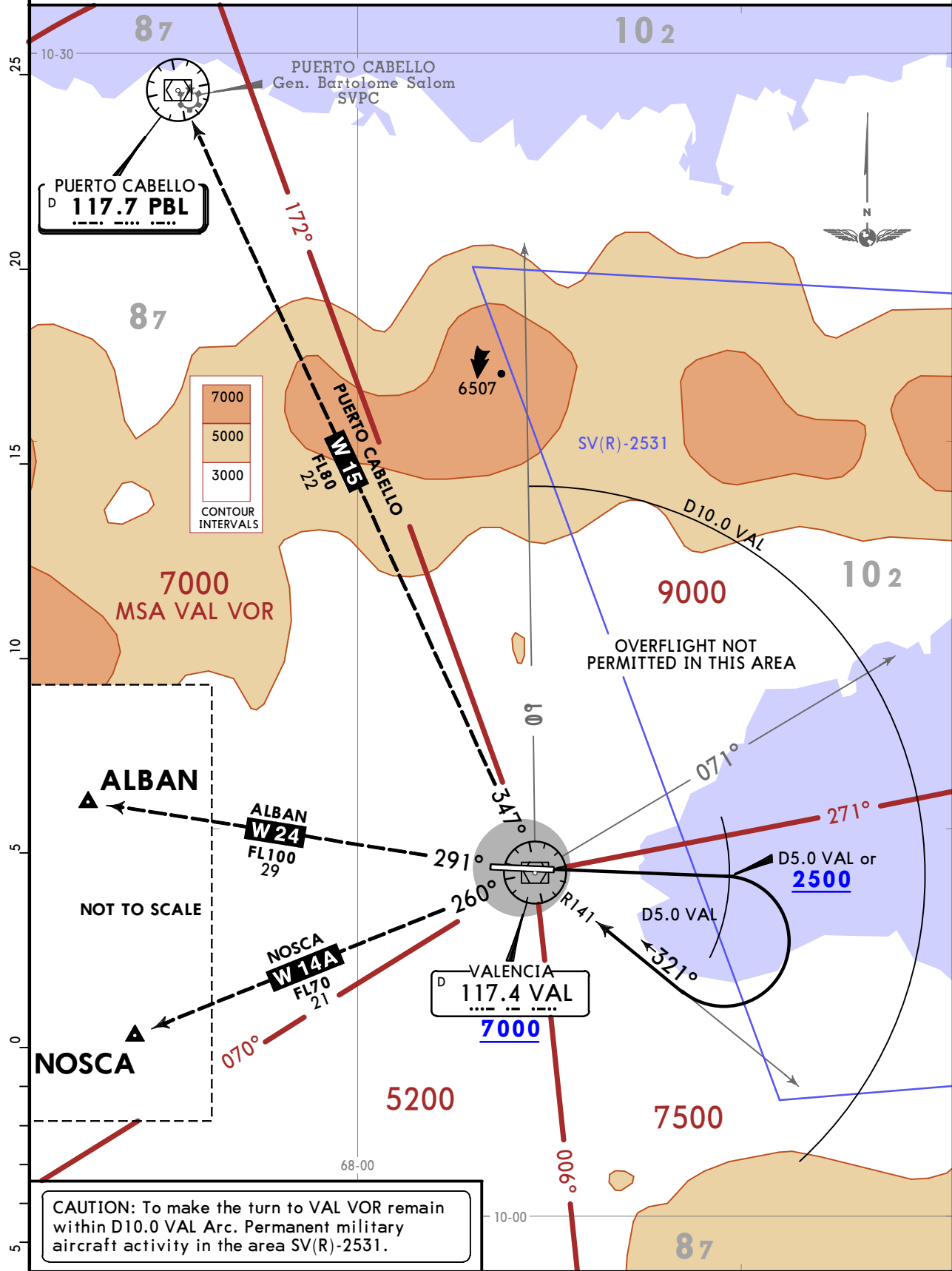
SVVA/VLN
ARTURO MICHELENA INTL

JEPPESEN
1 JUN 18 (10-3A)

VALENCIA, VENEZUELA
SID

Apt Elev 1417	Trans alt: 10000
------------------	------------------

LAGO 1 DEPARTURE [LAGO1] (RWY 10)



CAUTION: To make the turn to VAL VOR remain within D10.0 VAL Arc. Permanent military aircraft activity in the area SV(R)-2531.

INITIAL CLIMB
 MAINTAIN runway heading until D5.0 VAL or 2500, turn RIGHT to intercept VAL R141, Report overhead VAL VOR at 7000 or above. Then ALBAN, NOSCA or PUERTO CABELLO transition.

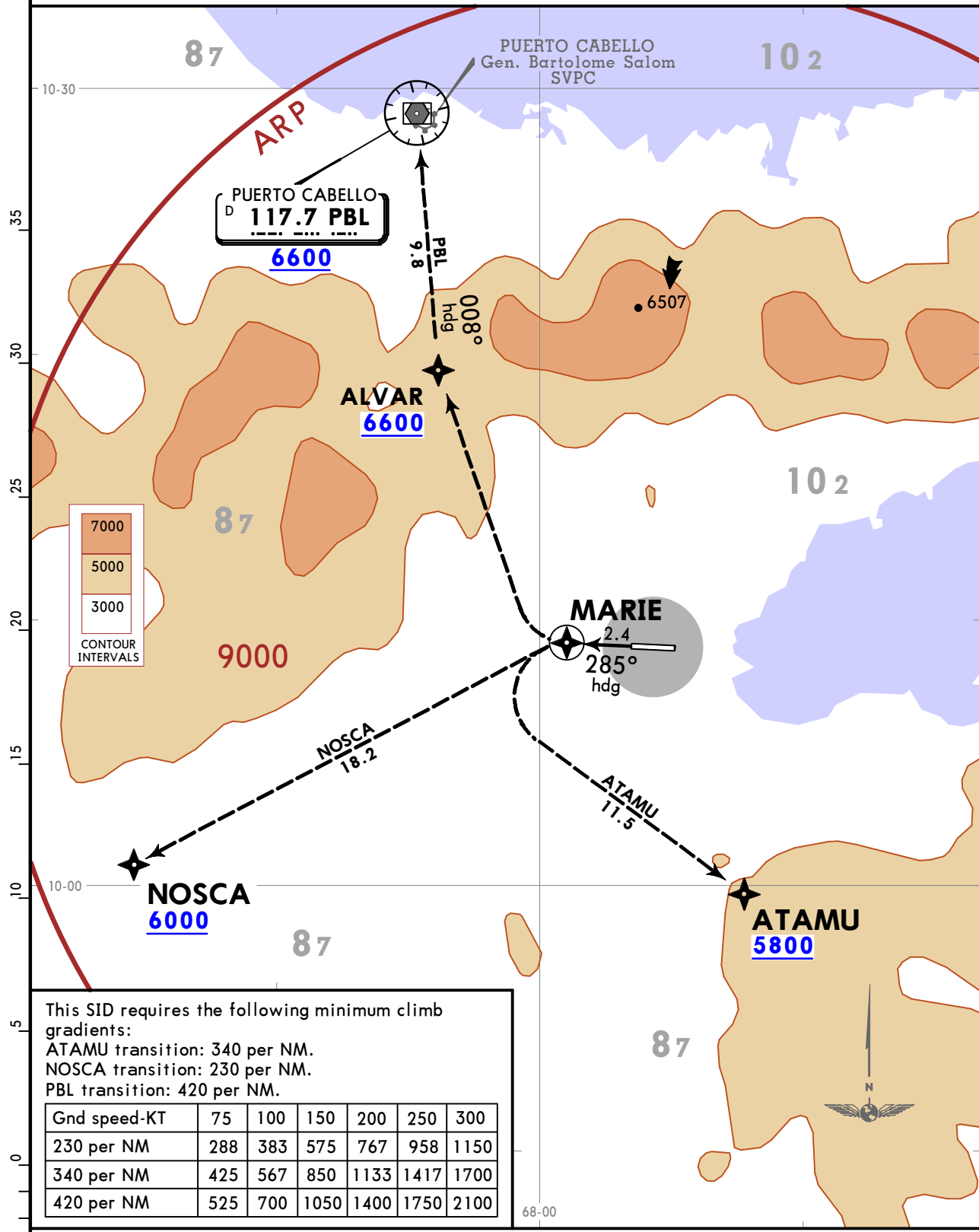
SVVA/VLN
ARTURO MICHELENA INTL

JEPPESSEN
1 JUN 18 (10-3B)

VALENCIA, VENEZUELA
RNAV SID

Apt Elev 1417
Trans alt: 7000
1. GPS required.
2. DME-DME not authorized.

MARIE 1 DEPARTURE (RNAV) [MARIE1]
(RWY 28)



This SID requires the following minimum climb gradients:

ATAMU transition: 340 per NM.
NOSCA transition: 230 per NM.
PBL transition: 420 per NM.

Gnd speed-KT	75	100	150	200	250	300
230 per NM	288	383	575	767	958	1150
340 per NM	425	567	850	1133	1417	1700
420 per NM	525	700	1050	1400	1750	2100

INITIAL CLIMB

Climb on heading 285° to MARIE.

TRANSITIONS

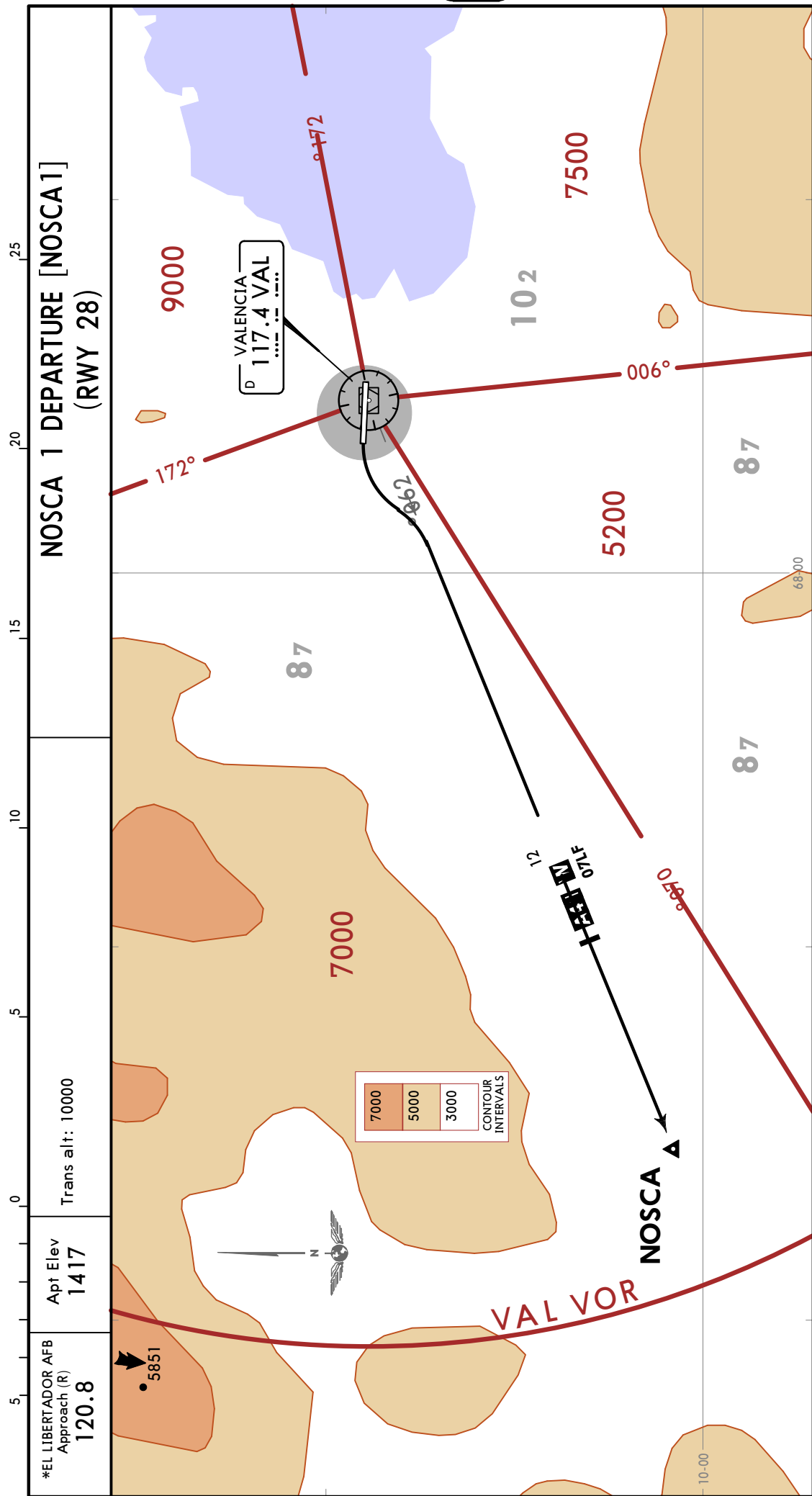
ATAMU	At MARIE climbing LEFT turn direct ATAMU at or above 5800.
NOSCA	At MARIE climbing LEFT turn direct NOSCA at or above 6000.
PBL	At MARIE climbing RIGHT turn direct ALVAR, cross at or above 6600 then heading 008° to PBL VOR at or above 6600.

SVVA/VLN
ARTURO MICHELENA INTL

JEPPESSEN
1 JUN 18 (10-3C)

VALENCIA, VENEZUELA

SID



This SID requires the following minimum climb gradient:

Gnd speed-KT	75	100	150	200	250	300
V/V(fpm)	313	417	625	833	1042	1250

INITIAL CLIMB

After take-off turn LEFT to intercept and follow VAL R260 climbing to 7000. Contact El Libertador Approach for instructions.

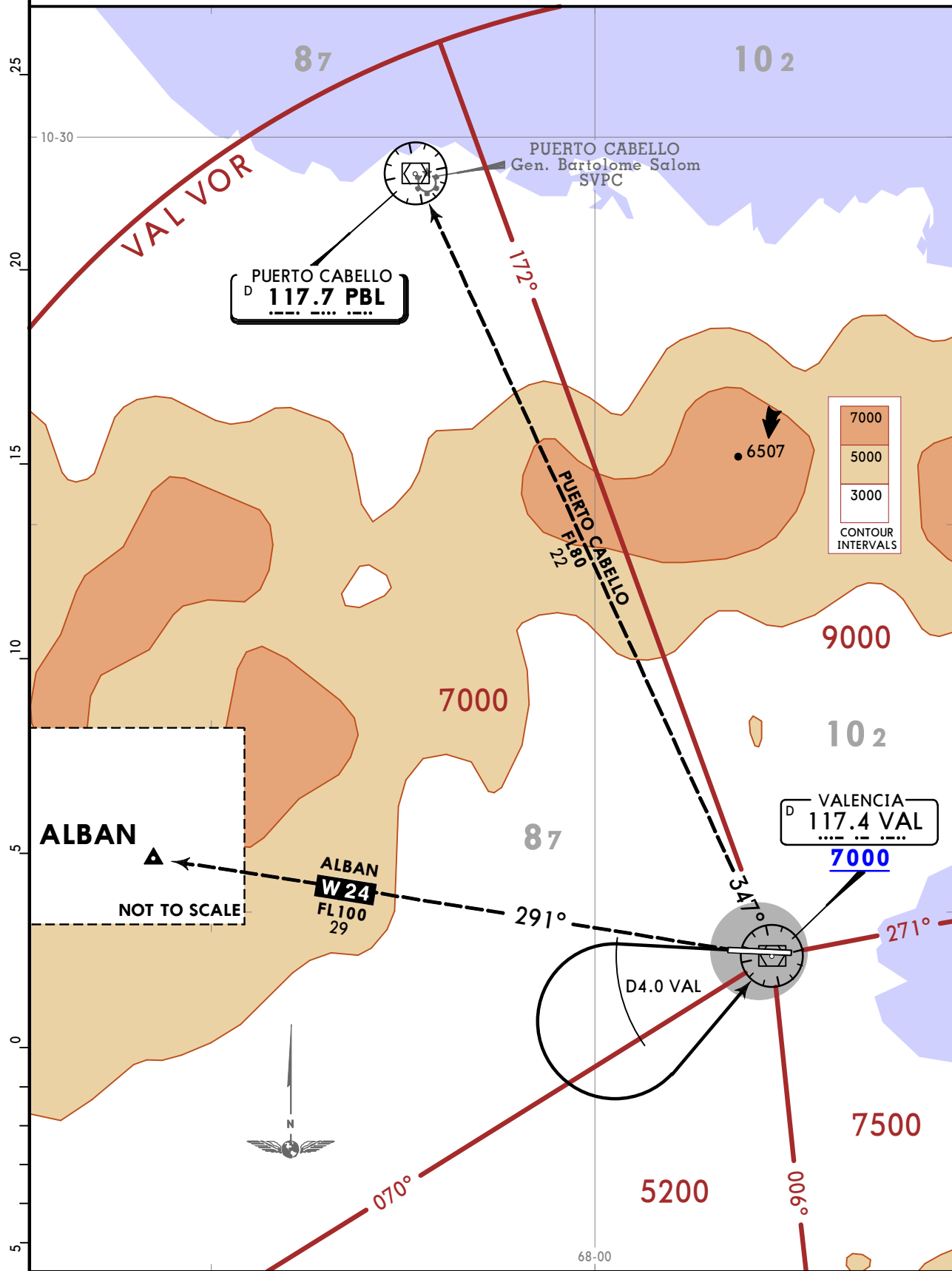
SVVA/VLN
ARTURO MICHELENA INTL

JEPPESEN
1 JUN 18 (10-3D)

VALENCIA, VENEZUELA
SID

*EL LIBERTADOR AFB Approach (R) 120.8	Apt Elev 1417	Trans alt: 10000
---	------------------	------------------

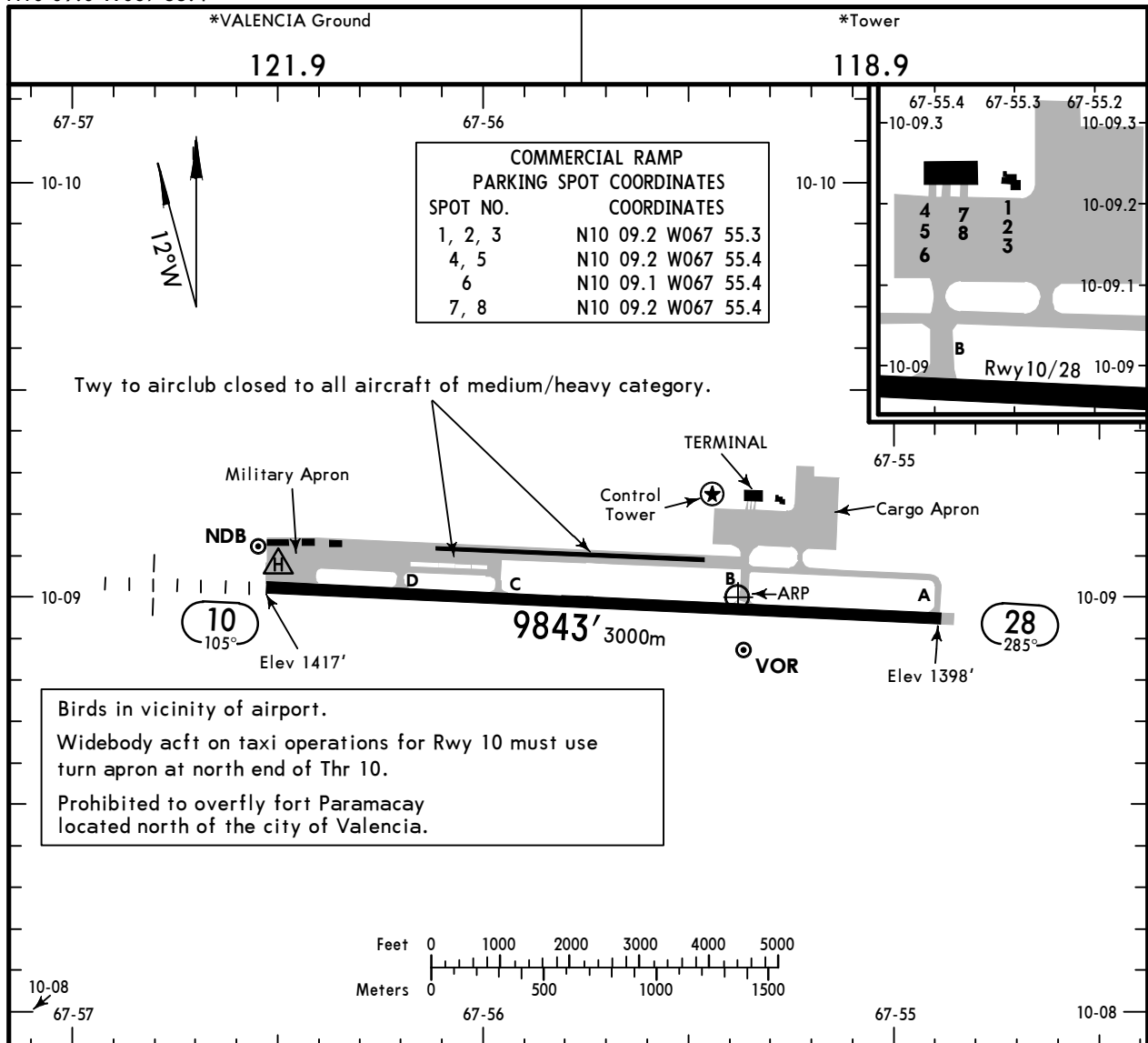
PBL 1 DEPARTURE
[PBL1]
(RWY 28)



INITIAL CLIMB
MAINTAIN runway heading until D4.0 VAL climbing to 7000, turn LEFT direct to VAL VOR and report at 7000 or above, Contact El Libertador Approach for instructions.

SVVA/VLN
 Apt Elev **1417'**
 N10 09.0 W067 55.4

JEPPesen VALENCIA, VENEZUELA
 21 APR 17 **(10-9)** Eff 27 Apr **ARTURO MICHELENA INTL**



ADDITIONAL RUNWAY INFORMATION

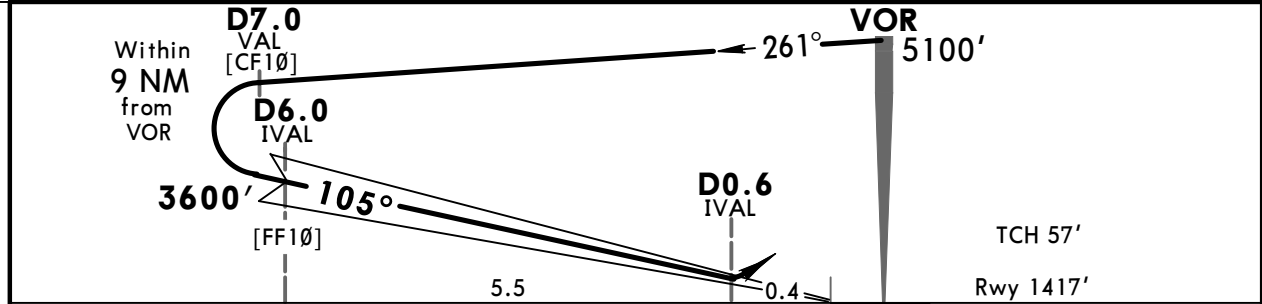
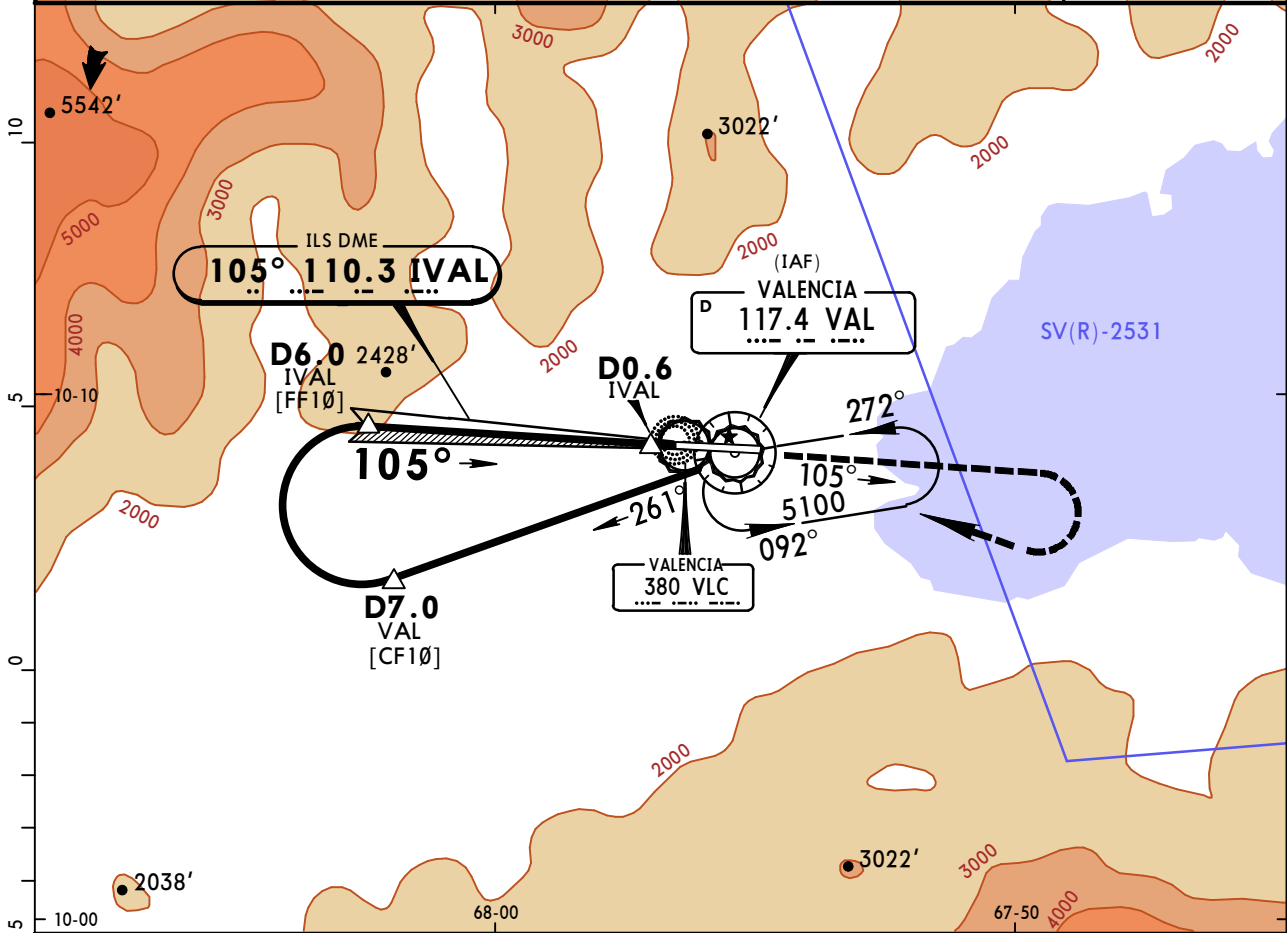
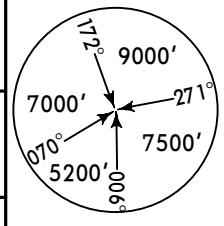
RWY		USABLE LENGTHS		TAKE-OFF	WIDTH
		Threshold	Glide Slope		
10	RL (60m) HIALS PAPI-L (angle 3.4°)				164'
28	RL (60m) PAPI-L (angle 3.4°)				50m

TAKE-OFF

AIR CARRIER (JAA)	
LVP must be in Force All Rwys RCLM (Day only) or RL	All Rwys RCLM (Day only) or RL
A	
B	250m
C	
D	300m

SVVA/VLN **JEPPESEN** **VALENCIA, VENEZUELA**
ARTURO MICHELENA INTL **21 APR 17** **Eff 27 Apr** **(11-1)** **MISSED APCH CLIMB** **GRADIENT MIM 3%** **ILS DME Rwy 10**

*EL LIBERTADOR AFB App. (R) 120.8		*VALENCIA Tower 118.9		*Ground 121.9	
LOC IVAL 110.3	Final Apch Crs 105°	Minimum Alt D6.0 IVAL 3600' (2183')	ILS DA(H) 1617' (200')	Apt Elev 1417' Rwy 1417'	
MISSED APCH: Maintain course of 105° and climb to 2700'. Climbing RIGHT turn to 5100' direct VAL VOR (Max IAS 230 KT) and follow instructions of ATC.					
Alt Set: hPa		Rwy Elev: 51 hPa		Trans level: By ATC	
1. Dual VOR DME required.		Trans alt: 10000'			



Gnd speed-Kts	70	90	100	120	140	160	HIALS PAPI 105° 2700' ↑	
GS	3.40°	426	548	609	731	853		974
Circling: MAP at D0.6 IVAL or D6.0 IVAL to MAP	5.5	4:43	3:40	3:18	2:45	2:21		2:04

STRAIGHT-IN LANDING RWY 10 MISSED APCH CLIMB GRADIENT MIM 3% ILS DA(H) 1617' (200') ALS out			CIRCLE-TO-LAND MISSED APCH CLIMB GRADIENT MIM 3% GS Required		
LOC (GS out)			Max Kts		
A	0.8 km	1.2 km	NOT AUTHORIZED	MDA(H)	
B				100	1930' (513') -1.9 km
C				135	1930' (513') -2.8 km
D				180	2100' (683') -3.7 km
				205	2760' (1343') -4.6 km

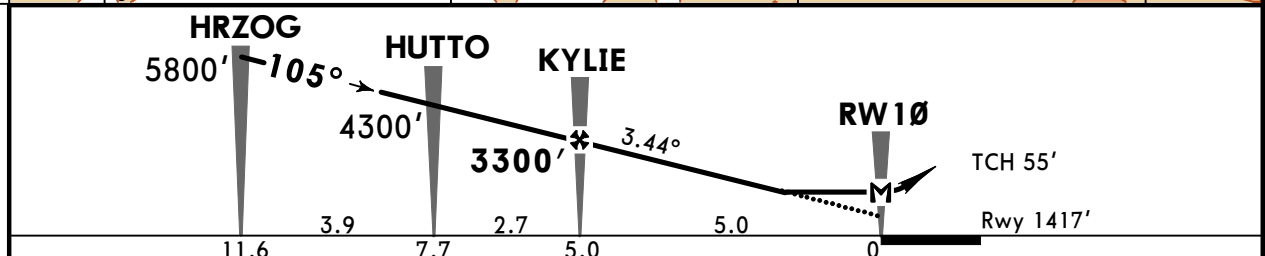
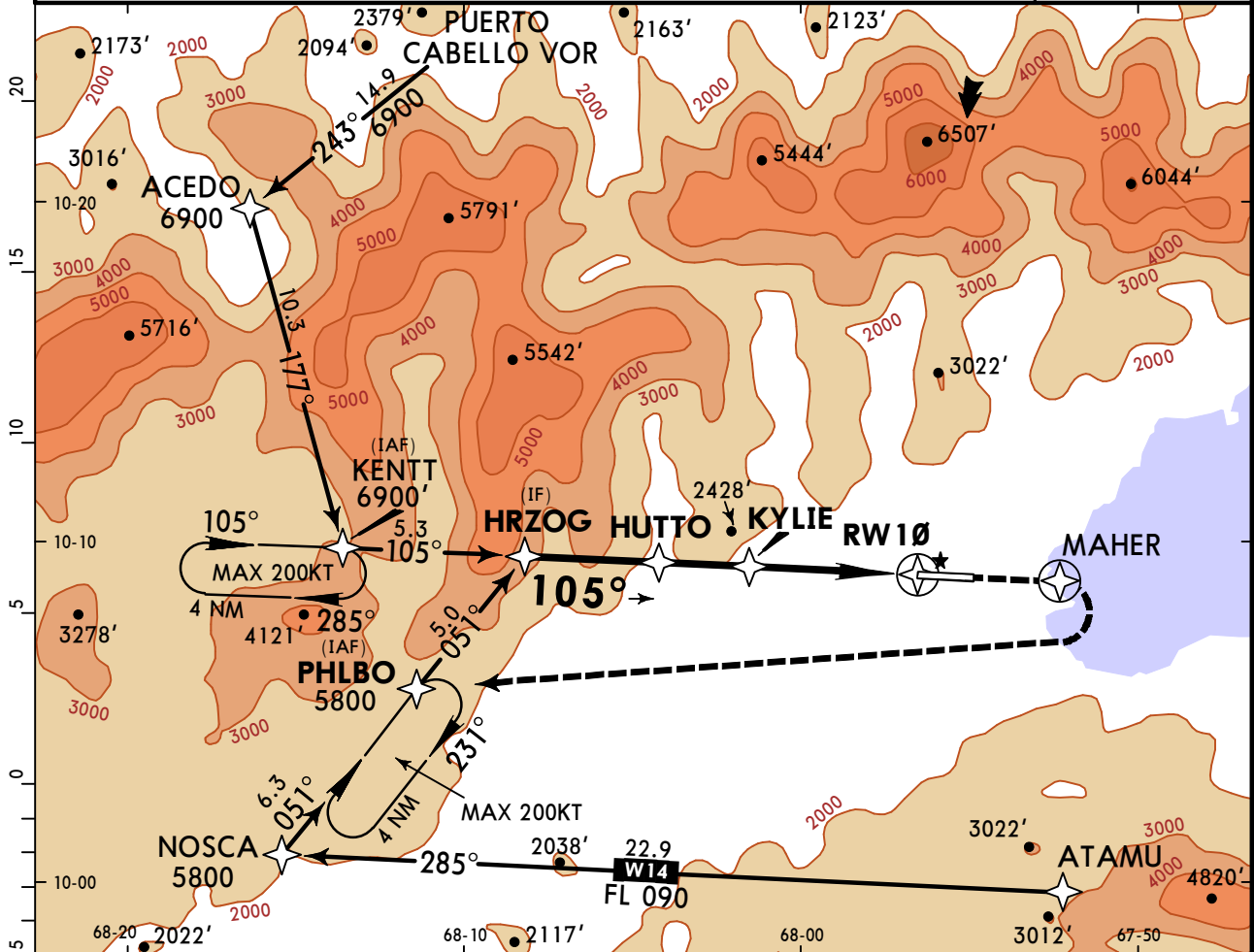
Not authorized North of Rwy 10-28.

SVVA/VLN
ARTURO MICHELENA INTL

JEPPESSEN
 29 NOV 19
Eff 5 Dec (12-1)

VALENCIA, VENEZUELA
RNP Y Rwy 10

*EL LIBERTADOR AFB App. (R) 120.8		*VALENCIA Tower 118.9		*Ground 121.9	
RNAV	Final Apch Crs 105°	KYLIE 3300' (1883')	LNAV MDA(H) 1940' (523')	Apt Elev 1417' Rwy 1417'	
MISSED APCH: Climb to 6800' direct MAHER, then RIGHT turn direct PHLBO and hold.					
Alt Set: hPa Rwy Elev: 51 hPa Trans level: By ATC Trans alt: 10000' 1. GPS required. 2. High terrain north of approach course, remain at or above the depicted VPA during the approach. 3. DME/DME not authorized. 4. When local altimeter setting not received, procedure not authorized.					
BRIEFING STRIP™					



Gnd speed-Kts	70	90	100	120	140	160	HIALS PAPI 	6800' 	MAHER
Descent Angle 3.44°	426	548	609	730	852	974			
MAP at RW10									

STRAIGHT-IN LANDING RWY10
 LNAV
 MDA(H) **1940'**(523')

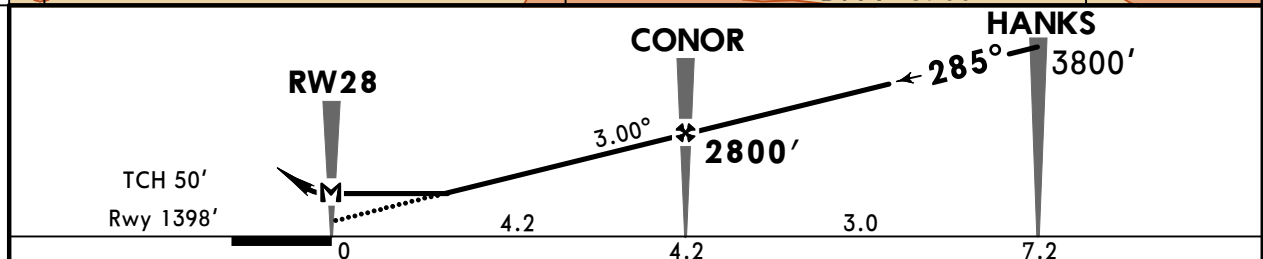
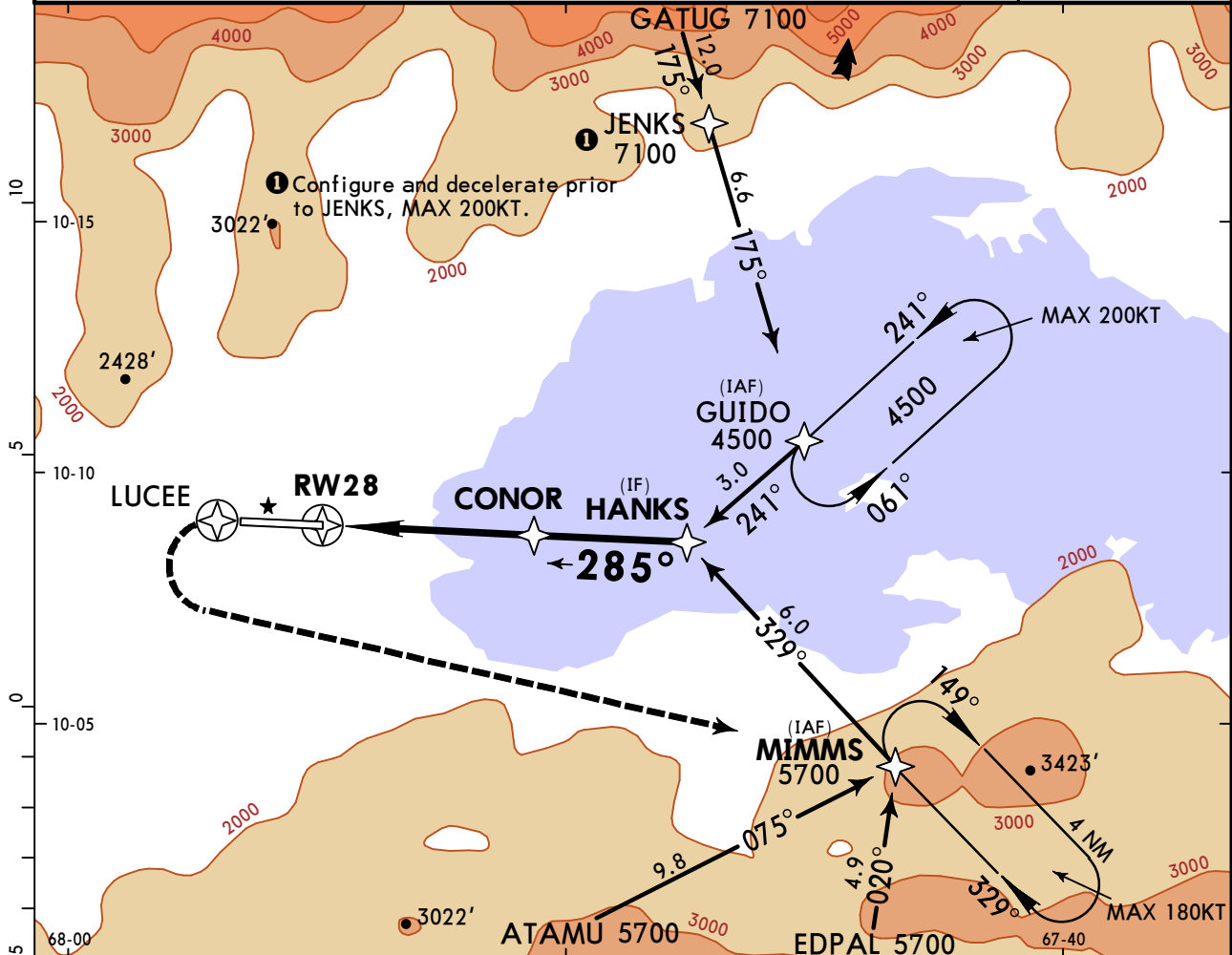
PANS OPS	ALS out	
		2.4 km
	2.0 km	
		2.8 km

SVVA/VLN
ARTURO MICHELENA INTL

JEPPESEN
 29 NOV 19
Eff 5 Dec (12-3)

VALENCIA, VENEZUELA
RNP Y Rwy 28

*EL LIBERTADOR AFB App. (R) 120.8		*VALENCIA Tower 118.9		*Ground 121.9	
RNAV	Final Apch Crs 285°	CONOR 2800' (1402')	LNAV MDA(H) 1740' (342')	Apt Elev 1417' Rwy 1398'	9000 MSA ARP
MISSED APCH: Climb to 6700' direct LUCEE, then LEFT turn direct MIMMS and hold.					
Alt Set: hPa Rwy Elev: 50 hPa Trans level: By ATC Trans alt: 10000' 1. GPS required. 2. High terrain north of approach course, remain at or above the depicted VPA during the approach. 3. DME/DME not authorized. 4. Procedure not authorized when using remote altimeter setting.					



Gnd speed-Kts	70	90	100	120	140	160	PAPI-L	6700'	D →	LUCEE
Descent Angle 3.00°	372	478	531	637	743	849				
MAP at RW28										

STRAIGHT-IN LANDING RWY28
LNAV
 MDA(H) **1740'** (342')

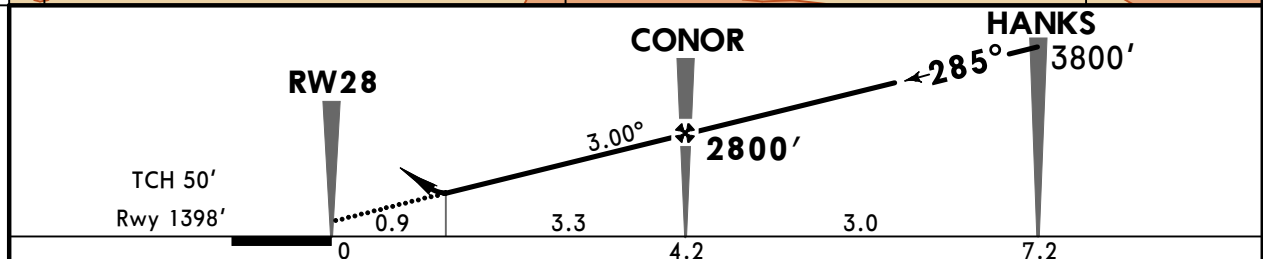
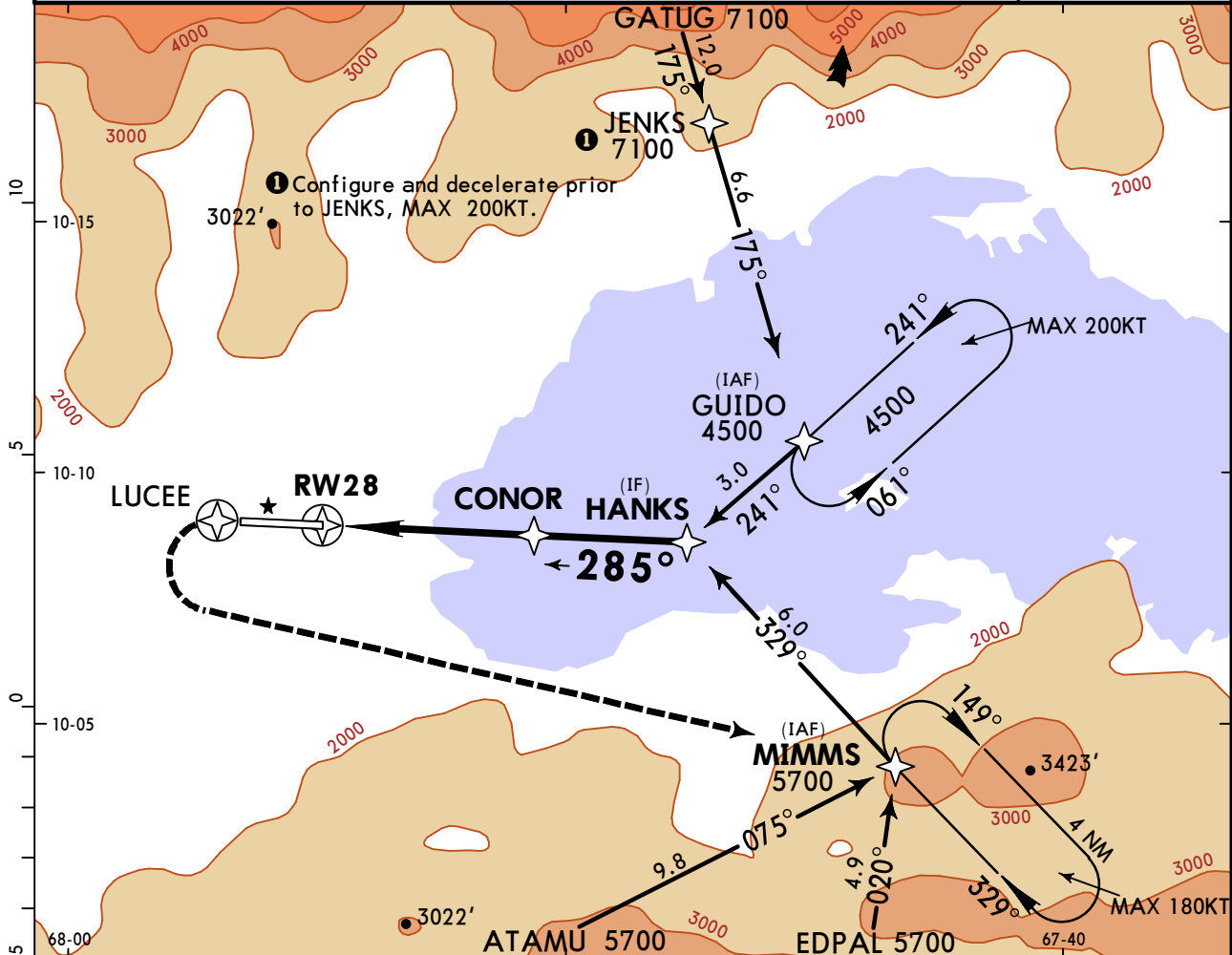
PANS OPS	A	2.4 km
	B	
	C	
	D	

SVVA/VLN
ARTURO MICHELENA INTL

JEPPESEN
 29 NOV 19
Eff 5 Dec (12-4)

VALENCIA, VENEZUELA
RNP Z Rwy 28 (LNAV/VNAV)

*EL LIBERTADOR AFB App. (R) 120.8		*VALENCIA Tower 118.9		*Ground 121.9	
RNAV	Final Apch Crs 285°	CONOR 2800' (1402')	LNAV/VNAV DA(H) 1740' (342')	Apt Elev 1417' Rwy 1398'	9000 MSA ARP
MISSED APCH: Climb to 6700' direct LUCEE, then LEFT turn direct MIMMS and hold.					
Alt Set: hPa Rwy Elev: 50 hPa Trans level: By ATC Trans alt: 10000' 1. GPS required. 2. High terrain north of approach course, remain at or above the depicted VPA during the approach. 3. DME/DME not authorized. 4. Procedure not authorized when using remote altimeter setting.					



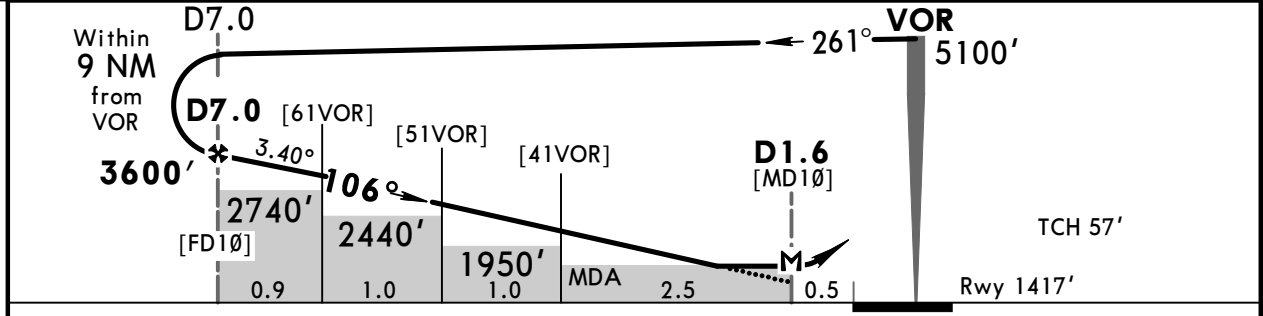
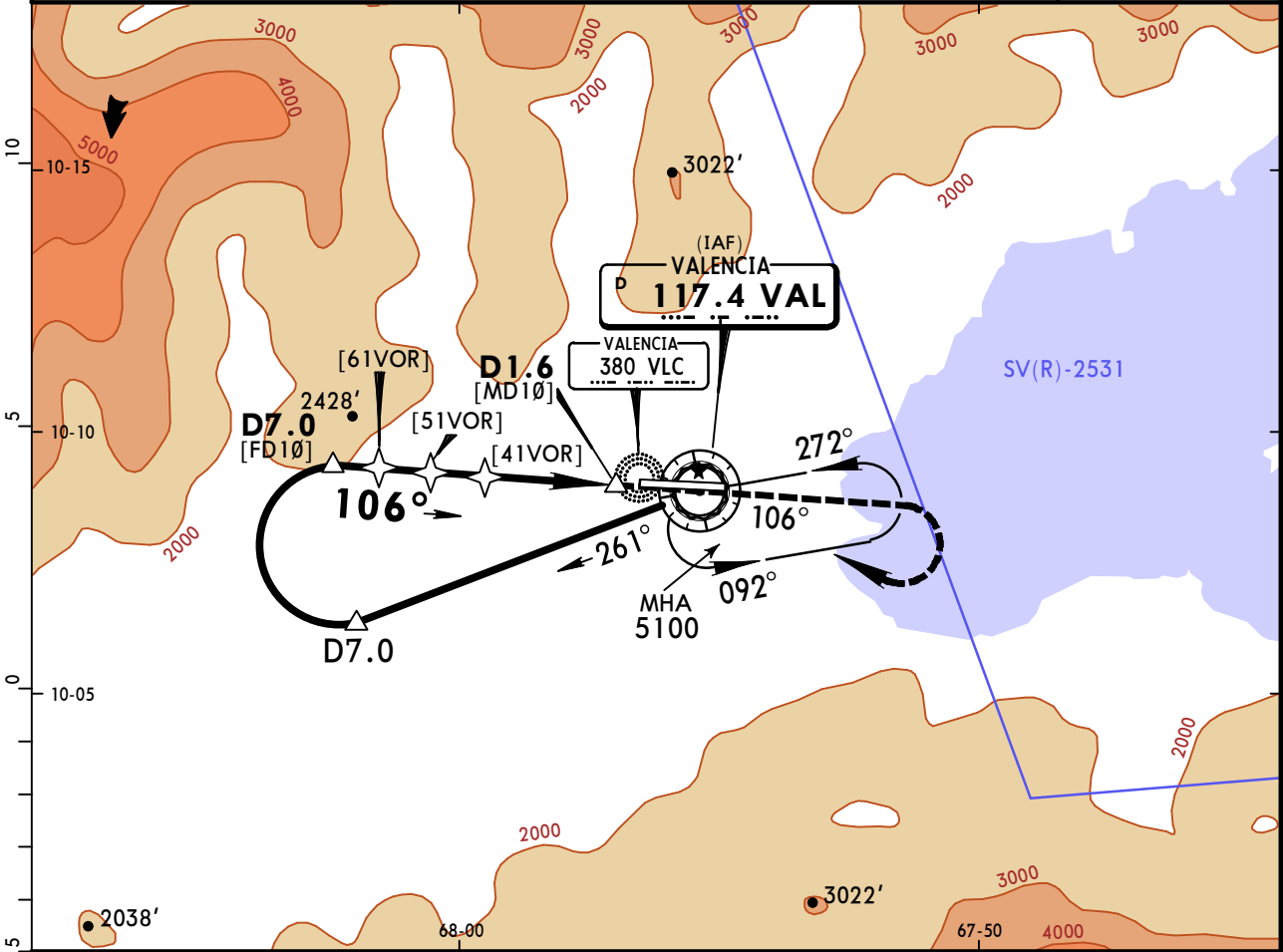
Gnd speed-Kts	70	90	100	120	140	160	PAPI-L	6700'	D →	LUCEE
Descent Angle 3.00°	372	478	531	637	743	849				
MAP at DA										

STRAIGHT-IN LANDING RWY28
LNAV/VNAV
 DA(H) **1740'** (342')

PANS OPS	A	2.4 km
	B	
	C	
	D	

SVVA/VLN **JEPPESEN** **VALENCIA, VENEZUELA**
ARTURO MICHELENA INTL **13 JUL 18** **(13-1)** **MISSED APCH CLIMB** **VOR DME Rwy 10**
Eff 19 Jul **GRADIENT MIM 3%**

*EL LIBERTADOR AFB App. (R) 120.8		*VALENCIA Tower 118.9		*Ground 121.9	
VOR VAL 117.4	Final Apch Crs 106°	Minimum Alt D7.0 3600' (2183')	MDA(H) 1890' (473')	Apt Elev 1417' Rwy 1417'	
MISSED APCH: Maintain course of 106° and climb to 2700'. Climbing RIGHT turn to 5100' direct to VAL VOR (Max IAS 230 KT) and follow instruction of ATC. Missed approach climb gradient 3%.					
Alt Set: hPa 1. Max IAS 190 KT outbound.		Rwy Elev: 51 hPa		Trans level: By ATC Trans alt: 10000'	



Gnd speed-Kts	70	90	100	120	140	160	HIALS PAPI 106°	2700' ↑
Descent Angle	3.40°	421	541	602	722	842		
MAP at D1.6 or D7.0 to MAP	5.4	4:38	3:36	3:14	2:42	2:19	2:02	

STRAIGHT-IN LANDING RWY 10 MISSED APCH CLIMB GRADIENT MIM 3% MDA(H) 1890' (473')		CIRCLE-TO-LAND MISSED APCH CLIMB GRADIENT MIM 3%	
ALS out		Max Kts	MDA(H)
A	1.6 km	100	1930' (513') - 1.9 km
B	2.0 km	135	1930' (513') - 2.8 km
C	2.8 km	180	2100' (683') - 3.7 km
D	2.8 km	205	2760' (1343') - 4.6 km

PANS OPS

1 Not authorized North of Rwy 10-28.

Chart changes since cycle 21-2020

ADD = added chart, REV = revised chart, DEL = deleted chart.

ACT	PROCEDURE IDENT	INDEX	REV DATE	EFF DATE
-----	-----------------	-------	----------	----------

VALENCIA, (ARTURO MICHELENA INTL - SVVA)

TERMINAL CHART CHANGE NOTICES

No Chart Change Notices for Airport SVVA